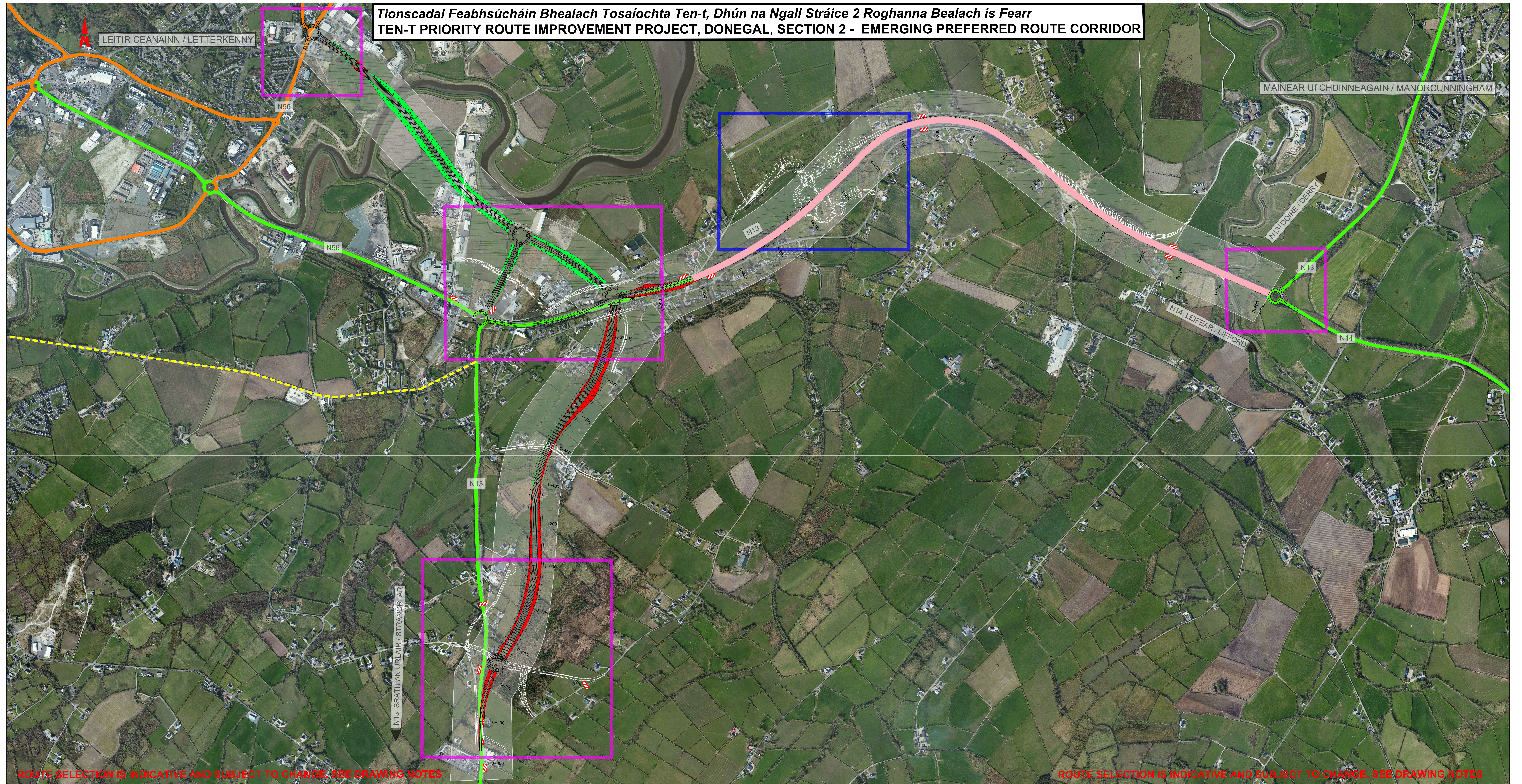




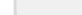

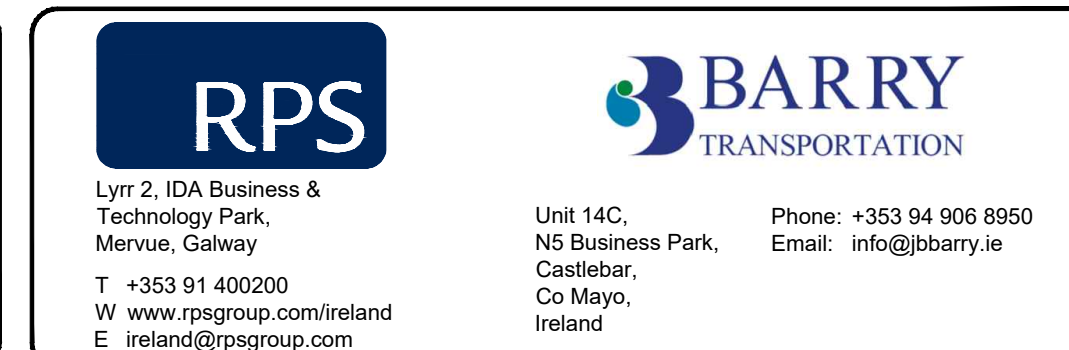


Tionscadal Feabhsúcháin Bhealach Tosaíochta Ten-t, Dhún na Ngall Stráice 2 Roghanna Bealach is Fearr
TEN-T PRIORITY ROUTE IMPROVEMENT PROJECT, DONEGAL, SECTION 2 - EMERGING PREFERRED ROUTE CORRIDOR



LEGEND:			
	EMERGING PREFERRED ROUTE CORRIDOR		LOCATION OF SOUTHERN RELIEF ROAD - SHOWN NOTIONALLY (DESIGNED BY OTHERS)
	ANTICIPATED ROUTE TIE-IN LOCATION		ONLINE IMPROVEMENTS TO FORM PART OF MAINLINE
	ANTICIPATED JUNCTION LOCATION		ANTICIPATED ROAD CLOSURE

NOTES:	
1. THE CORRIDOR SHOWN ON THE EMERGING PROPOSED LOCAL CORRIDOR ONLY IS SUBJECT TO CHANGE. MORE DETAILED ASSUMPTIONS, ONGOING STUDIES AND THE INFORMATION RECEIVED FROM THE PUBLIC MAY RESULT IN CHANGES TO PATHS, OR ALL OF THE EMERGING PROPOSED LOCAL CORRIDOR APPLICANTS TO THE LOCAL CORRIDOR STUDY WILL BE REQUIRED TO PROVIDE THE OTHER INFORMATION.	4. THE CURRENT DESIGN WILL BE MODIFIED AND UPDATED AS A RESULT OF CONSULTATIONS, FEEDBACK, DETAIL INVESTIGATIONS, TECHNICAL SURVEYS AND DESIGN DEVELOPMENT.
2. THE EMERGING PROPOSED LOCAL CORRIDOR SHOWN IS 300M WIDE AND IS SUBJECT TO CHANGE. THIS CORRIDOR ALLOWS FOR DESIGN REFINEMENT.	5. THE DESIGN OF OTHER ENGINEERING FEATURES, SUCH AS DRAINAGE AND STRUCTURES, WILL BE CONDUCTED DURING THE PRELIMINARY DESIGN.
3. ALIGNMENTS OF MAINLINE, JUNCTIONS AND SIDE ROADS INDICATED ON THIS DRAWING ARE NOT FINALISED AND SUBJECT TO FURTHER MODIFICATION. ROAD ALIGNMENT OF NEW EXISTING ROADS, JUNCTIONS AND SIDE ROADS MAY BE VARY. SELECTED ACCESS ROADS ARE SUBJECT TO CHANGE.	6. THE DESIGN AND LOCATION OF JUNCTIONS AND SIDE ROADS ARE SUBJECT TO CHANGE AS THE DESIGN DEVELOPMENT, WITH FURTHER ALIGNMENT AND MODIFICATION DURING THE PRELIMINARY DESIGN.
	7. DETAILS PRESENTED ON THIS DRAWING DO NOT REPRESENT THE FINAL CORRIDOR OR FINAL SCHEME DESIGN.



NOTES

DO NOT SCALE, use figured dimensions only.

All levels are referred to Ordnance Survey Datum, Mean Sea.

This drawing is the property of The Transport Infrastructure Ireland, Parkgate Business Centre, Parkgate Street, Dublin 1. It is a confidential document and must not be copied, used, or its contents divulged without prior written consent. This document should not be relied on or used in circumstances other than those for which it was originally prepared. RPS (Barry Transportation accepts no responsibility for this document to any other party other than the party by whom it was commissioned.

Information including topographical survey, geotechnical investigation and utility detail used in the design have been provided by others.

Rev.	Date	Drawn	Description	Chkd	Appd	Project Title: TEN-T Priority Route Improvement Project, Donegal	
P07	14.02.19	DC	FOR COMMENTS & REVIEW	TP	EC	Drawing Title: EMERGING PREFERRED ROUTE SECTION 2	Status: S3
P07	12.02.19	DC	FOR COMMENTS & REVIEW	TP	EC		
S05	08.02.19	DC	FOR COMMENTS & REVIEW	TP	EC		
P04	07.02.19	DC	FOR COMMENTS & REVIEW	TP	EC		
S03	28.11.18	DC	FOR COMMENTS & REVIEW	TP	EC		
P02	16.09.18	DC	FOR COMMENTS & REVIEW	EC	EC	Designed: DC Date: Nov 18 Model File Identifier: Scale @ A1: AS SHOWN Approved: EC Drawn: EC Checked: EC Sheet: 01 of 01 IT_MG0337-RPS-00-77-DR-D-GF0010	Rev: P07
P02	16.09.18	DC	FOR COMMENTS & REVIEW	EC	EC		
P02	16.09.18	DC	FOR COMMENTS & REVIEW	EC	EC		