

# *TIONSCADAL FEABHSÚCHÁIN BHEALACH TOSAÍOCHTA TEN-T, DHÚN NA NGALL* **TEN-T PRIORITY ROUTE IMPROVEMENT PROJECT, DONEGAL**

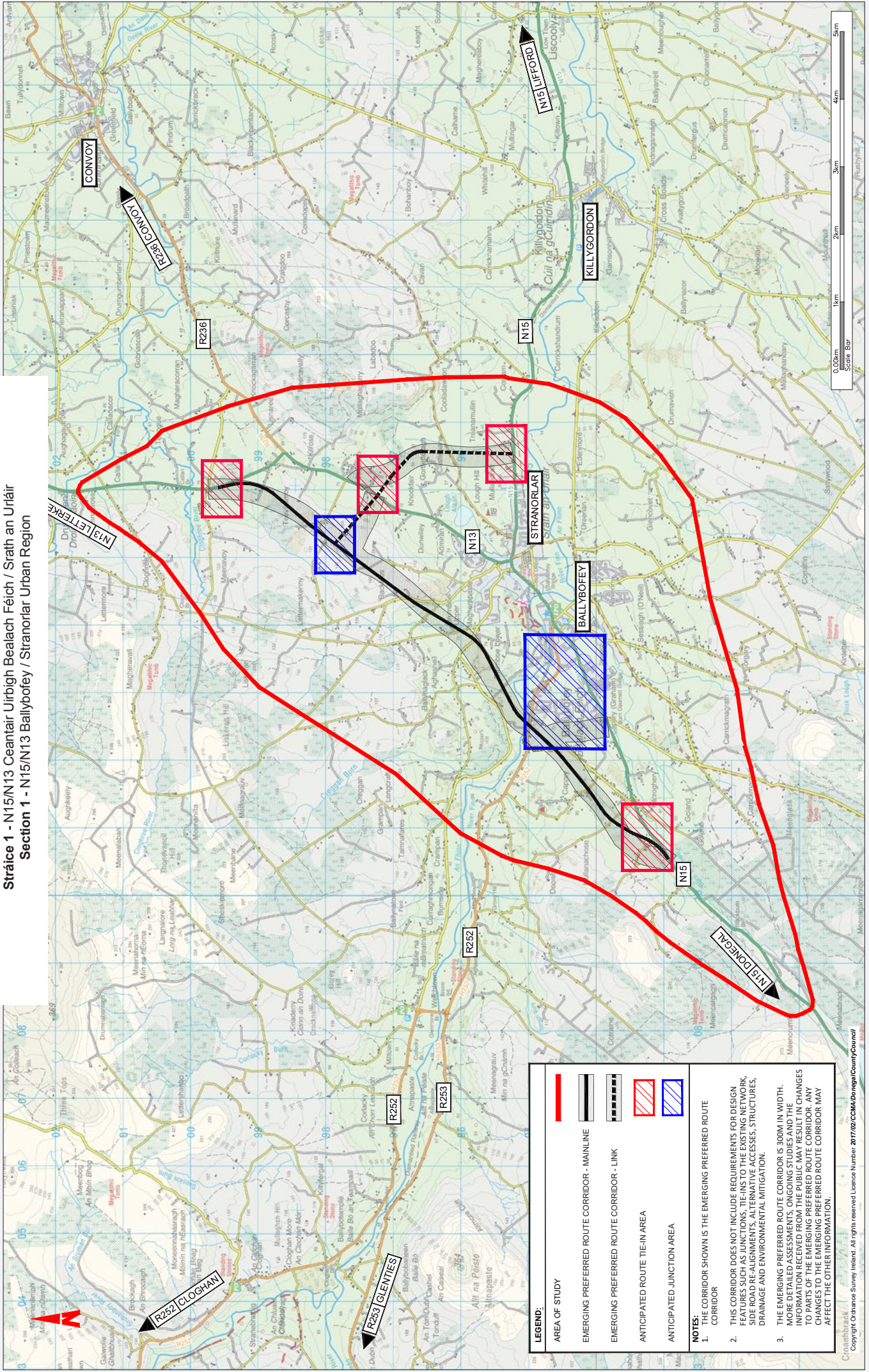
*Comhairliúchán Poiblí - Roghanna Bealach is Fearr*  
**Public Consultation – Emerging Preferred Route**

Feabhra 2019 / February 2019





**Stráice 1 - N15/N13 Ceantair Uirbhigh Bealach Féich / Srath an Uiláir  
Section 1 - N15/N13 Ballybofey / Stranorlar Urban Region**



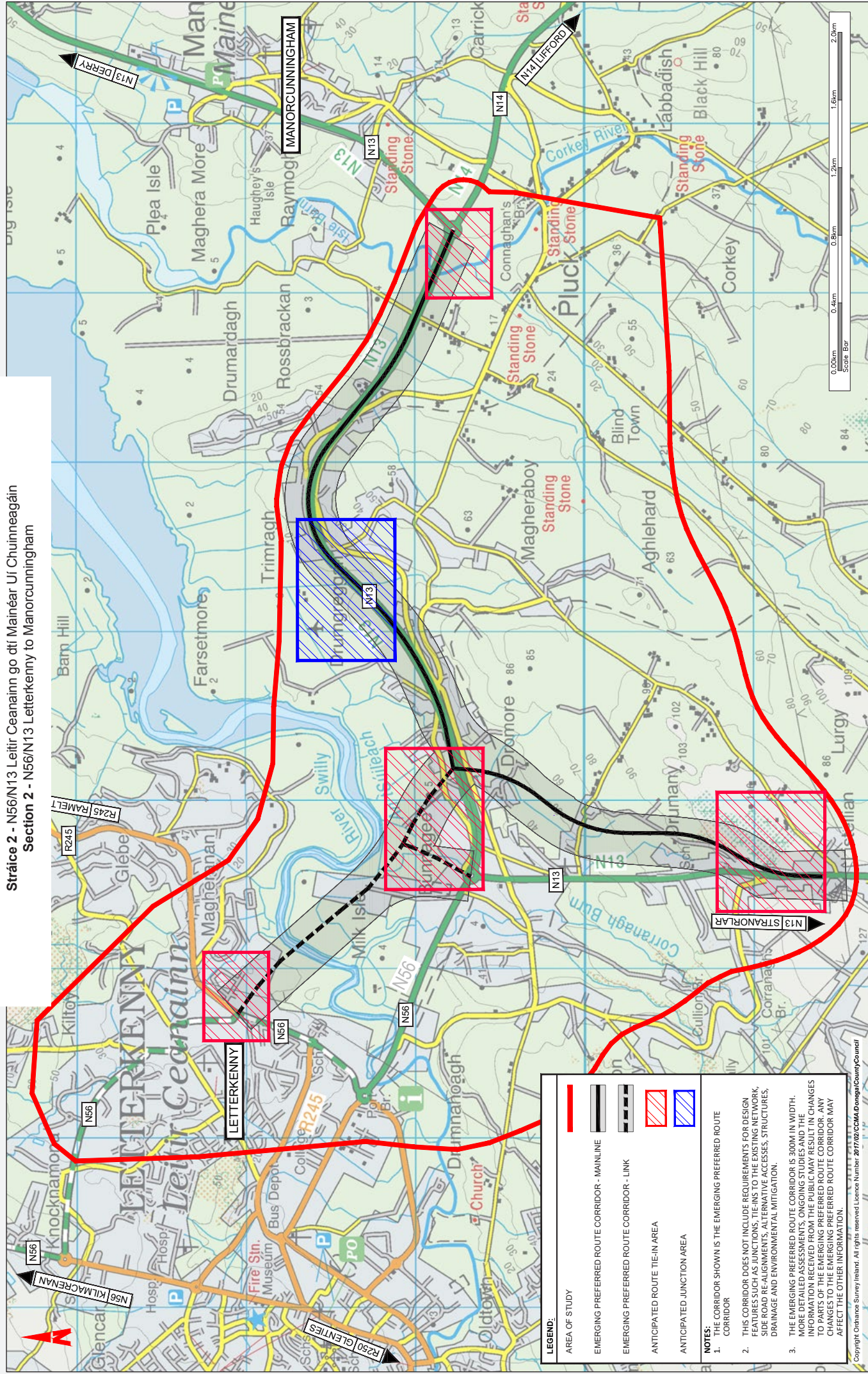
**LEGEND:**

	AREA OF STUDY
	EMERGING PREFERRED ROUTE CORRIDOR - MAINLINE
	EMERGING PREFERRED ROUTE CORRIDOR - LINK
	ANTICIPATED ROUTE TIE-IN AREA
	ANTICIPATED JUNCTION AREA

- NOTES:**
1. THE CORRIDOR SHOWN IS THE EMERGING PREFERRED ROUTE CORRIDOR
  2. THIS CORRIDOR DOES NOT INCLUDE REQUIREMENTS FOR DESIGN FEATURES SUCH AS JUNCTIONS, TIE-INS TO THE EXISTING NETWORK, SIDE ROAD RE-ALIGNMENTS, ALTERNATIVE ACCESSES, STRUCTURES, DRAINAGE AND ENVIRONMENTAL MITIGATION.
  3. THE EMERGING PREFERRED ROUTE CORRIDOR IS 300M IN WIDTH. MORE DETAILED ASSESSMENTS, ONGOING STUDIES AND THE INFORMATION RECEIVED FROM THE PUBLIC MAY RESULT IN CHANGES TO PARTS OF THE EMERGING PREFERRED ROUTE CORRIDOR. ANY CHANGES TO THE EMERGING PREFERRED ROUTE CORRIDOR MAY AFFECT THE OTHER INFORMATION.



**Stráice 2 - N56/N13 Leitir Ceanainn go dtí Mainéar Uí Chuinneagáin  
Section 2 - N56/N13 Letterkenny to Manorunningham**



**LEGEND:**

- AREA OF STUDY
- EMERGING PREFERRED ROUTE CORRIDOR - MAINLINE
- EMERGING PREFERRED ROUTE CORRIDOR - LINK
- ANTICIPATED ROUTE TIE-IN AREA
- ANTICIPATED JUNCTION AREA

**NOTES:**

1. THE CORRIDOR SHOWN IS THE EMERGING PREFERRED ROUTE CORRIDOR.
2. THIS CORRIDOR DOES NOT INCLUDE REQUIREMENTS FOR DESIGN FEATURES SUCH AS JUNCTIONS, TIE-INS TO THE EXISTING NETWORK, SIDE ROAD RE-ALIGNMENTS, ALTERNATIVE ACCESSES, STRUCTURES, DRAINAGE AND ENVIRONMENTAL MITIGATION.
3. THE EMERGING PREFERRED ROUTE CORRIDOR IS 300M IN WIDTH. MORE DETAILED ASSESSMENTS, INCLUDING STUDIES AND THE INFORMATION RECEIVED FROM THE PUBLIC MAY RESULT IN CHANGES TO PARTS OF THE EMERGING PREFERRED ROUTE CORRIDOR. ANY CHANGES TO THE EMERGING PREFERRED ROUTE CORRIDOR MAY AFFECT THE OTHER INFORMATION.



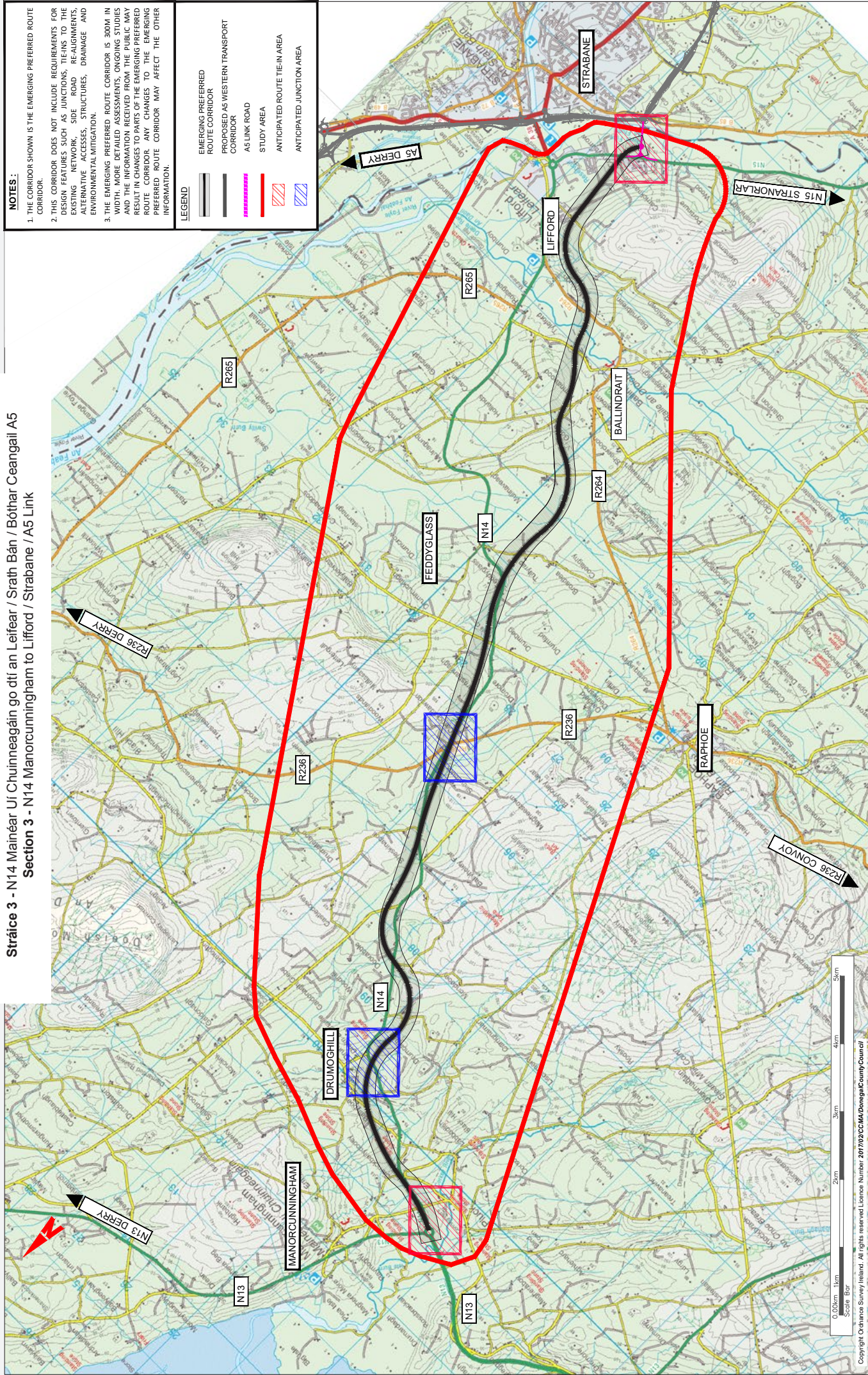
**Stráice 3 - N14 Mainéar Uí Chuinneagáin go dtí an Leifear / Strath Bán / Bóthar Ceangail A5  
Section 3 - N14 Manorcunningham to Lifford / Strabane / A5 Link**

**NOTES:**

1. THE CORRIDOR SHOWN IS THE EMERGING PREFERRED ROUTE CORRIDOR.
2. THIS CORRIDOR DOES NOT INCLUDE REQUIREMENTS FOR DESIGN FEATURES SUCH AS JUNCTIONS, TIE-INS TO THE EXISTING NETWORK, SIDE ROAD RE-ALIGNMENTS, ALTERNATIVE ACCESS, STRUCTURES, DRAINAGE AND ENVIRONMENTAL MITIGATION.
3. THE EMERGING PREFERRED ROUTE CORRIDOR IS 300M IN WIDTH. MORE DETAILED ASSESSMENTS, ONGOING STUDIES AND THE INFORMATION RECEIVED FROM THE PUBLIC MAY RESULT IN CHANGES TO PARTS OF THE EMERGING PREFERRED ROUTE CORRIDOR. ANY CHANGES TO THE EMERGING PREFERRED ROUTE CORRIDOR MAY AFFECT THE OTHER INFORMATION.

**LEGEND**

- EMERGING PREFERRED ROUTE CORRIDOR
- PROPOSED AS WESTERN TRANSPORT CORRIDOR
- A5 LINK ROAD
- STUDY AREA
- ANTICIPATED ROUTE TIE-IN AREA
- ANTICIPATED JUNCTION AREA





# TEN-T PRIORITY ROUTE IMPROVEMENT PROJECT, DONEGAL

## Céard é an Tionscadal Feabhsúcháin Bhealach Tosaíochta TEN-T?

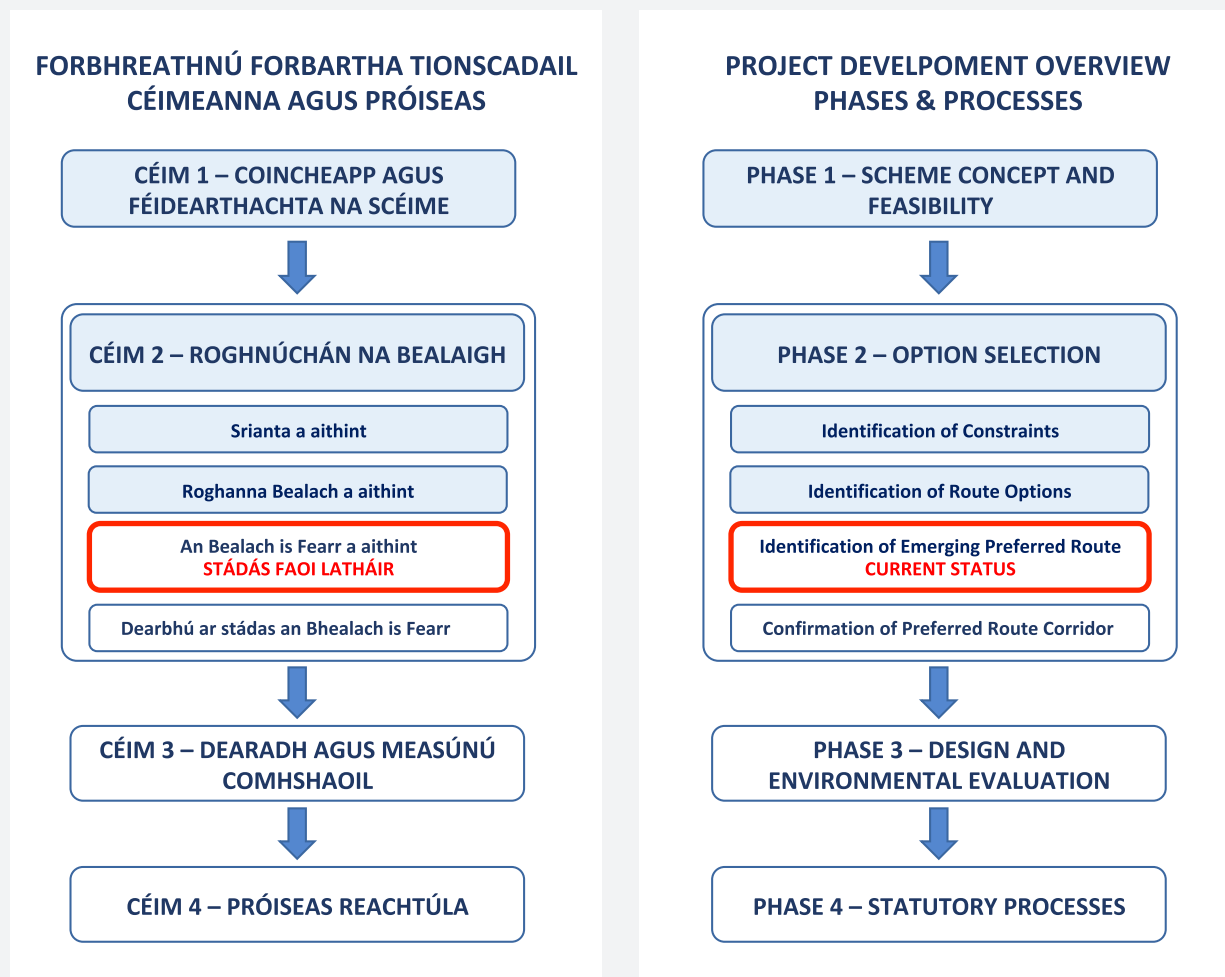
Tá tosaíocht tugtha do thrí stráice TEN-T i nDún na nGall le haghaidh obair fheabhsúcháin (Léaráid 1), le dul i ngleic leis na fadhbanna sábháilteachta agus oibríochtúla atá ar na bóithre seo faoi láthair. Tá an obair ar an trí stráice seo i nDún na nGall mar chuid de Thionscadal Feabhsúcháin Bhealach Tosaíochta TEN-T, Dún na nGall. Is iad na trí stráicí ná:

- Stráice 1 - N15/N13 Ceantair Uirbigh Bealach Féich / Srath an Urláir
- Stráice 2 – N56/N13 Leitir Ceanainn go dtí Mainéar Uí Chuinneagáin
- Stráice 3 – N14 Mainéar Uí Chuinneagáin go dtí an Leifear / Srath Bán / Bóthar Ceangail A5.

## What is the TEN-T Priority Route Improvement Project?

Three sections of the Trans-European Transport Network (TEN-T) have been prioritised for improvement to address existing safety and operational issues. Together, these three sections form the TEN-T Priority Route Improvement Project, Donegal. These three sections are:

- Section 1 – N15/N13 Ballybofey / Stranorlar Urban Region
- Section 2 – N56/N13 Letterkenny to Manorcunningham
- Section 3 – N14 Manorcunningham to Lifford / Strabane / A5 Link.



Dul chun cinn agus Stádas faoi latháir / Project Progress and Current Status

# TEN-T PRIORITY ROUTE IMPROVEMENT PROJECT, DONEGAL

## Dul Chun Cinn

*Tar éis na roghanna bealaigh ghearrliosta a aithint in Aibreán agus Bealtaine 2018, rinne RPS Barry Transportation suirbhéanna agus measúnuithe chun na roghanna bealaigh ghearrliosta a mheas. Mar thoradh air sin, roghnaíodh an Bealach is Fearr do gach Rannóg. Cuirfear an comhairliúchán poiblí seo ar fáil chun an Bealach is Fearr do gach Straice den Tionscadal a chur i láthair don phobal.*

## Aiseolas

*Tá tú in ann aiseolas a thabhairt don foireann mar seo a leanas:*

- *Labhairt le Ionadaí Foireann an Tionscadail ag an cruinniú comhairliúchán poiblí agus foirm aiseolas a líonadh*
- *Foirm aiseolas a thabhairt leat agus é a sheoladh ar ais ag úsáid an clúdach litreach saorpost roimh an Aoine, 29 Márta 2019*
- *Ag úsáid an foirm aiseolais ar líne ar suíomh idirlín an Tionscadail ag [www.donegal-ten-t.ie/](http://www.donegal-ten-t.ie/)*
- *Seol ríomhphost chuig*

*[donegalten-t@rpsgroup.com](mailto:donegalten-t@rpsgroup.com)*

*Tá sé i gceist an Bealach is Fearr a chur i láthair go luath i Ráithe 2 2019. Chun a chinntiú go bhfuil dóthain ama le breithniú, iarrtar aiseolas a thabhairt roimh 15 Márta 2019.*

## Breathnú chun cinn:

Tar éis na gcomhairliúcháin seo, déanfar tuilleadh deimhniú agus mionbheartú chun an Bealach is Fearr a aimsiú do gach Straice den tionscadal. Cuirfear an Bealach is Fearr roghnaithe, do gach Straice den Tionscadail, i láthair don phobal ag Comhairliúchán Poiblí go luath i Ráithe 2 de 2019.

Tar éis an Bealach is Fearr roghnú, leanfaidh an tionscadal ar aghaidh go dtí an Chéim Dhearaidh ina ndéanfar suirbhéanna mionsonraithe agus imscrúduithe breise.

## Progress:

Following the identification of the shortlisted route options in April and May 2018, RPS Barry Transportation have conducted surveys and assessments to evaluate the shortlisted route options. This has resulted in the identification of an Emerging Preferred Route Corridor for each Section. The purpose of this public consultation is to present these Emerging Preferred Route Corridors to the public.

## Feedback

You are invited to provide comment/feedback by:

- Speaking to a Project Team Representative at the consultation event and filling in a feedback form.
- Completing a feedback form and returning it to the Project Team using the freepost envelope by 15th March 2019.
- Using the feedback section on our Project Website at [www.donegal-ten-t.ie/](http://www.donegal-ten-t.ie/)
- Emailing us at [donegalten-t@rpsgroup.com](mailto:donegalten-t@rpsgroup.com)

It is intended to present the Preferred Route Corridor in early Q2 2019. To ensure sufficient time for consideration, feedback is requested by 15th March 2019.

## Look Ahead

Following these consultations, further confirmation and route refinement will then establish the Preferred Route Corridor for each section of the project. The Preferred Route Corridor for each section will then be presented to the public at a public consultation in early Q2 of 2019.

Following confirmation of the Preferred Route Corridor, the project will progress to the Design Phase where further detailed surveys and investigations will be undertaken.