

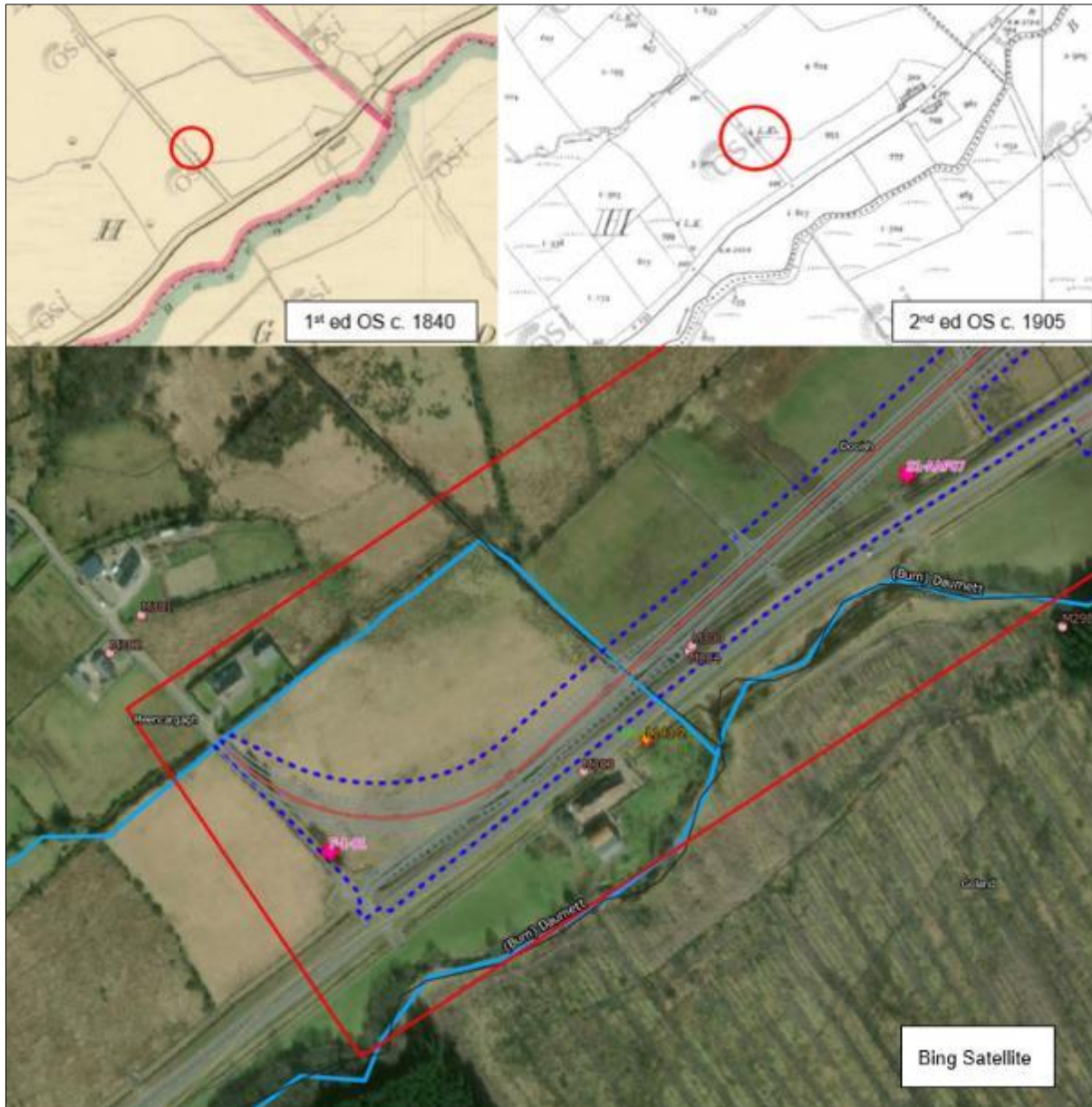
Appendix C17.09

Section 1 Detailed Walkover Survey and Photographic Record

Field Walkover Survey (SW-NE): 8th, 9th & 11th June 2020, 21 Jan 2022

Meencargagh/Dooish N15 Link Rd and N15 Tie-in southern terminus

Moving north-eastward from the L6564 at Meencargagh (Link Rd area) the proposed alignment passes close to a lime kiln (Ref. F-1-01) depicted on the 2nd edition OS map (1905-06) (ITM 610111, 892699). The 1st edition OS mapping (c. 1840) also indicates a small well further northwest at ITM 609994, 892844. The kiln structure is partially extant within a dense hedge, with another structure (possibly another kiln; representing a double-kiln) located directly beside it (see **Plate S1-01**).



Location of lime kilns at Meencargagh townland ITM 610111, 892699



Plate S1-01: View of lime kiln ruins F-1-01 at Meencargagh (Ch. 00 Southern terminus), facing southwest

The proposed link alignment crosses a deep drainage ditch which forms the townland boundary with Meencargagh and Dooish. The landscape between along the link alignment at the townlands of Meencargagh and Dooish is generally low-lying unimproved grazing land with evidence for peat deposits and preserved bog wood (see **Plates S1-02 and S1-03**). The field boundaries traversed by the proposed alignment are generally comprised of drainage ditches, often lined by post-and-wire fences. The boundaries divide the field into broadly uniform square and rectangular shapes, most of which date to the late nineteenth century. This marshy area is **considered to be of moderate archaeological potential**, particularly for site types such as *fulachta fiadh* and burnt spreads and forms part of area of archaeological potential S1-AAP01 and S1-AAP07 beyond.



Plate S1-02: View across the townlands of Meencargagh and Dooish, facing northeast



Plate S1-03: View of peat and bogwood, Dooish townland

From the northerly portions of the link alignment and Ch. 00 – Ch. 500 mainline alignment, the land consists mostly of unimproved pasture with abundant large boulders protruding from the surface of some fields with evidence of clearance in other areas with boulders piled as field boundaries (see **Plates S1-04 and S1-05**). The field boundaries follow a general northwest – southeast trend (including the townland boundary

between Dooish and Cappry), forming long rectangular (often sub-divided) fields. These are the remnants of fields enclosed in the early nineteenth century or earlier.



Plate S1-04: View of boulders at Ch. 0+350 mainline (Cappry), facing southwest



Plate S1-05: View of clearance boulders forming field boundary at Ch. 0 +350 mainline (Cappry), facing northeast

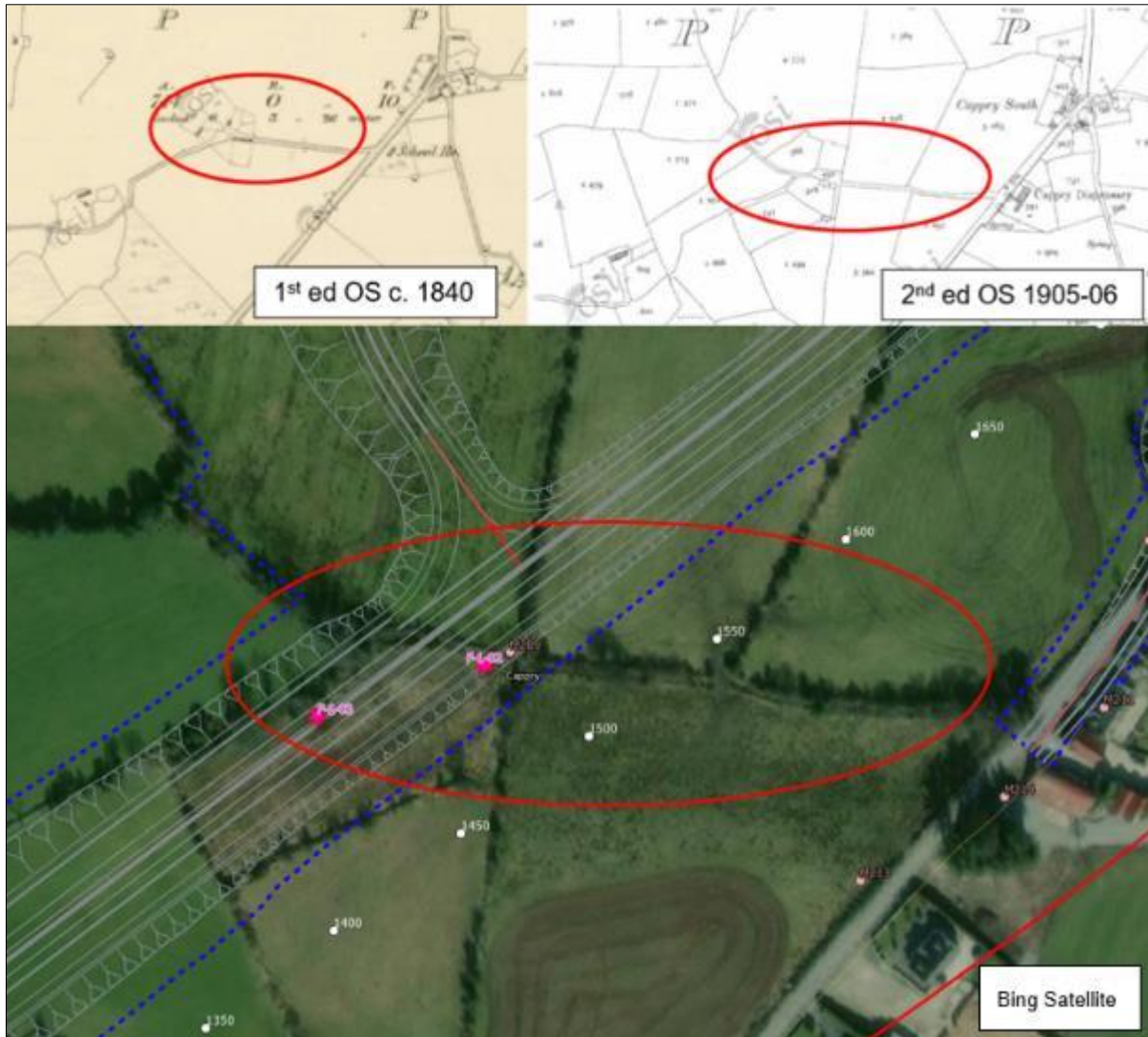
Ch. 500 – Ch. 2+400 (mainline) and Ballybofey Link Road (Ch. 00 – 2056)

The quality of the land generally improves moving north-eastward through the townland of Cappry towards the River Finn (see **Plate S1-06**). The field boundaries are made up of stone walls, hedges and hedge banks and post-and-wire fence and often a composite of two or more of these elements. Most of the field boundaries now present were depicted on the 2nd edition OS map (1905-06), suggesting that they were set out in the late nineteenth century.



Plate S1-06: View of landscape around Ch. 1 +300 (Cappry), facing northeast

An overgrown *botharín* (Ref. F-1-02 and F-1-03) lined by denuded coaxial stone walls depicted on the 1st edition OS (c. 1840) and 2nd edition OS (1905-06) maps as accessing a vernacular farmstead (no above ground trace) was noted near Ch. 1+500 mainline (see **Plate S1-07**) ITM 611870, 894356. Outbuilding (NIAH 40907720) at Cappry is visible from the proposed alignment at fields immediately east and west of the L2794 Road (around Ch. 1 +800) (see **Plate S1-08**), whilst another *botharín* (Ref F-1-04) at ch. 350 (Ballybofey Link Road) (ITM 611905, 894734) is noted linking the NIAH outbuilding 40907720 farmstead to another farmstead further west as indicated on the 1st ed OS (c. 1840) and 2nd edition OS (1905-06) maps (see **Plate S1-09**).



Botharín F-1-02 and vernacular farmstead location at Cappry (ITM 611870, 894356)



Plate S1-07: View of botharin near Ch. 1 +500 (Cappry), facing northeast

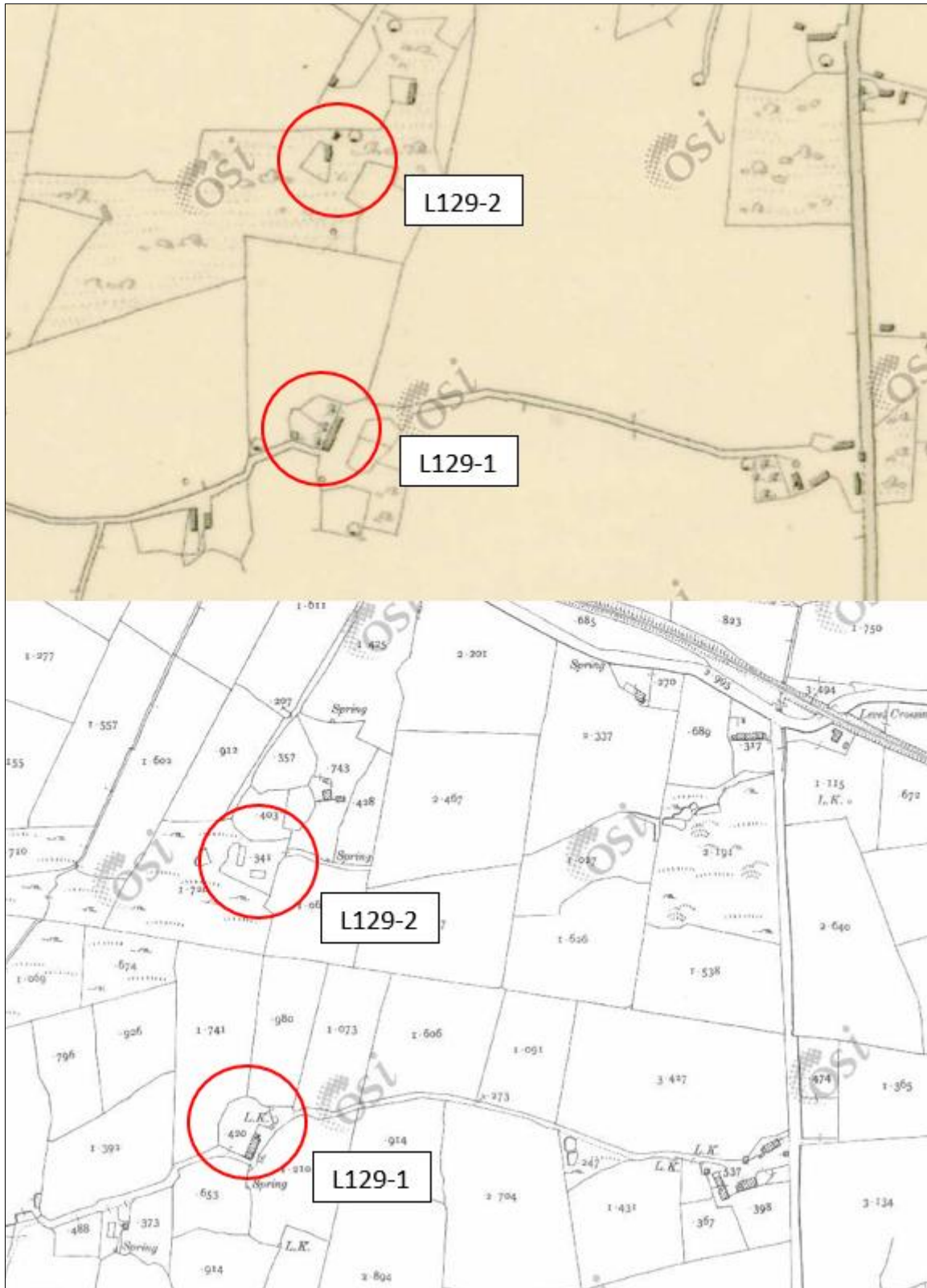


Plate S1-08: View towards outbuilding NIAH 40907720 from near Ch. 1+800, facing northwest

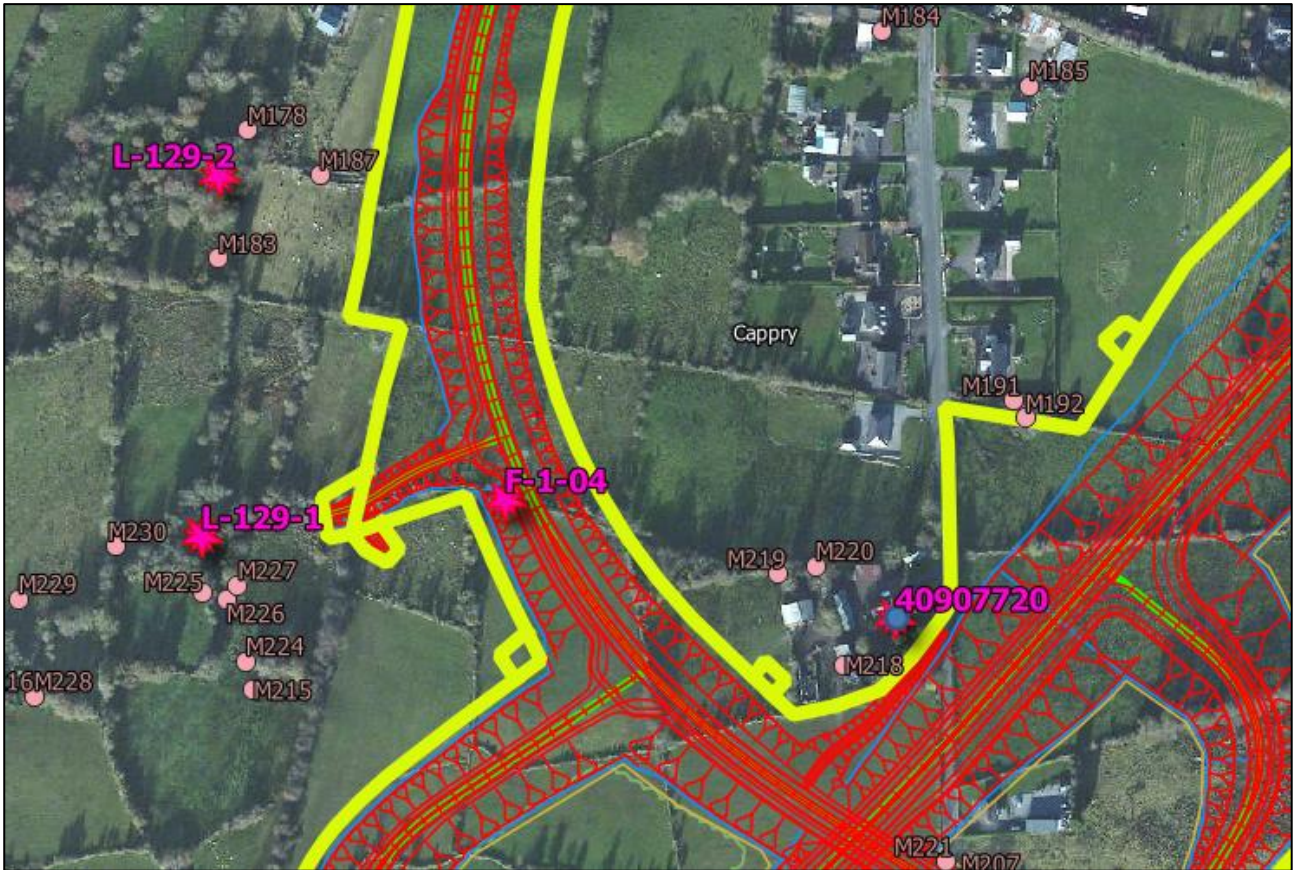


Plate S1-09: Botharin F-1-04 near ch. 350 Ballybofey Link Rd facing east towards outbuilding and farmstead at Capry NIAH 40907720

There are two LiDAR anomalies within Capry townland, Refs. L-129-1 (possible enclosure) and L-129-2 (buildings). The possible enclosure site L-129-1 is located west of Ch. 350 (left) junction link with the Ballybofey Link Rd (ITM 611749, 894715) and is indicated as a northerly curving boundary enclosing a farmstead (1st and 2nd ed OS maps) with a lime kiln indicated on the 2nd ed OS map (c. 1905). The buildings L-129-2 are noted on the 1st ed OS along with a lime kiln whilst the buildings are also indicated on the 2nd ed OS map.



1st ed OS Map (c. 1840) (top) and 2nd ed OS map (c. 1905) (bottom) showing buildings and lime kilns at LiDAR L129-1 and L-129-2 locations



Location of LiDAR anomalies L129-1 and L-129-2 in Cappry townland, west junction with Ballybofey Link Road area, Ch. 350 and Ch. 200

The lands associated with proposed Ballybofey Link Road alignment, moving south-eastward from Cappry to the linkage with the N15 at Ballybofey, are generally bounded by hedges and field banks lined with post-and-wire fences. Crossing into the townland of Ballybofey the land dis-improves, with hedges lined with drainages ditches, patches of hazel and whin (gorse) and generally unimproved grazing with abundant boulders apparent (see **Plate S1-10**). The remains of a possible lime kiln (Ref. F-1-05) (as shown on the 1st ed OS map c. 1830) was encountered near Ch. 1+600, ITM 612940, 894368 (see **Plate S1-11**).

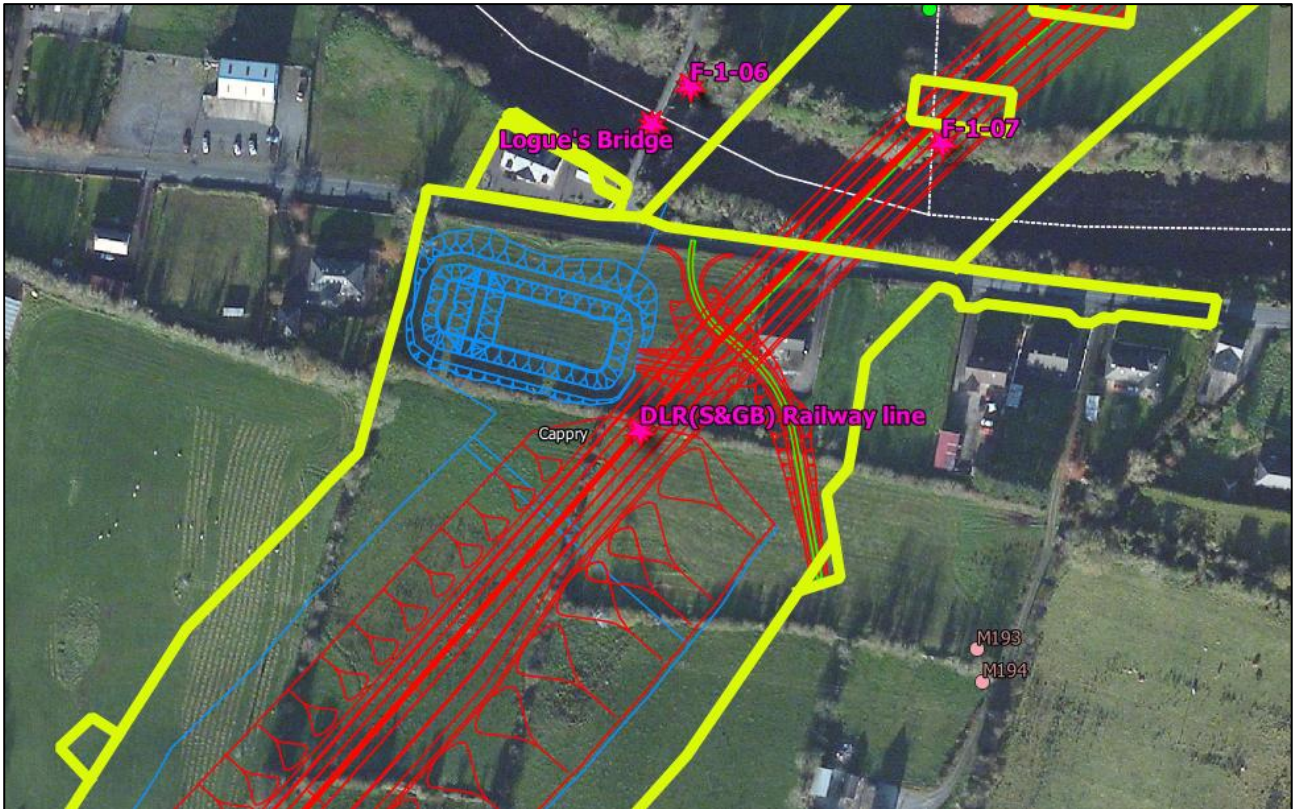


Plate S1-10: View from Ch. 1900 (Ballybofey Link Rd), Ballybofey, facing northwest



Plate S1-11: View of possible lime kiln F-1-05 near Ch. 1500 (Ballybofey Link Rd), facing west

There is little evidence of the railway embankment associated with the former narrow-gauge line of the Donegal Light Railway (Stranorlar & Glenties Branch) (1895-1947) at Ch. 2+300 (just south of the R252 Road) save for the extant field boundary that preserves the northern portion of the alignment (ITM 612409, 894923).



Remains of former Donegal Light Railway line at Cappry (ITM 612409, 894923)

Ch. 2+400 – Ch. 3+900 mainline

The proposed alignment crosses the River Finn, east of the existing single-carriage bridge known locally as Barney Logue's Bridge (Barney owned a shop beside the bridge) at Ch. 2+400 (ITM 612413, 895026). An inscription on the concrete parapet of the bridge states 'J. McKelvey 1911', which appears to date the construction of the bridge (see **Plate S1-12**), although a bridge is depicted on the 2nd edition OS map (surveyed 1904), suggesting an either an earlier structure, or the construction date of the bridge is earlier than the inscription. Inspection of the undercarriage of the bridge from the riverside shows that the bridge is of composite construction, with a concrete carriageway and parapet atop cut stone piers with V-shaped cutwaters to both elevations (see **Plate S1-13**). The stone piers are similar in form to railway bridges in the locality. The *Stranorlar and Glenties Branch* line was built between 1890 and 1895 and is located a short distance to the south; the bridge may also (in-part) date to this period.



Plate S1-12: View of date inscription on Barney Logue's bridge, near Ch. 2+400



Plate S1-13: View of bridge from riparian area, facing south-southwest

A denuded retaining wall was noted within the riparian area on the north side of the river at Ch. 2+400. There are also the remains of a stoned path, lined on both sides by a very denuded stone wall, sloping down to the river edge (see **Plate S1-14**). This feature (Ref. F-1-06) appears to have been an access to the river, either for building the bridge or to remove stones and gravel from the river (ITM 612426, 895039). A short distance

east, at Ch. 2+450 there is a deep ditch running southward from the former mill (NIAH 40907708, ITM 612476, 895211) to the river. This is the remains of the tail race (Ref. F-1-07) of the mill at Ironworks (depicted on all OS map editions) at ITM 612511, 895020 (see **Plate S1-15**). The land between the River Finn and Drumboe Avenue roadway is open and undulating, forming part of area of previously identified area of archaeological potential S1-AAP02.



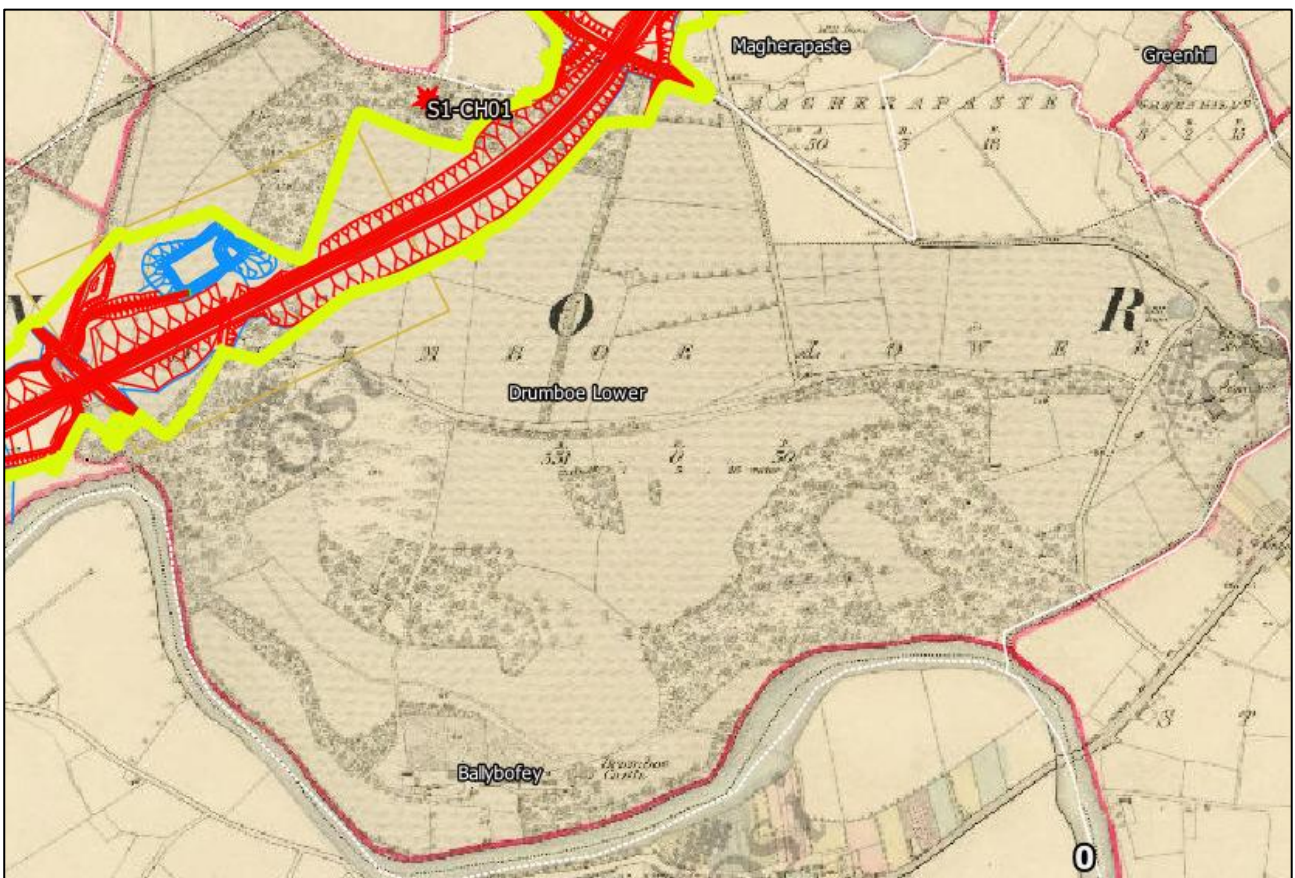
Plate S1-14: View of possible river access path in riparian area (F-1-06) of River Finn, ch. 2+430 facing south



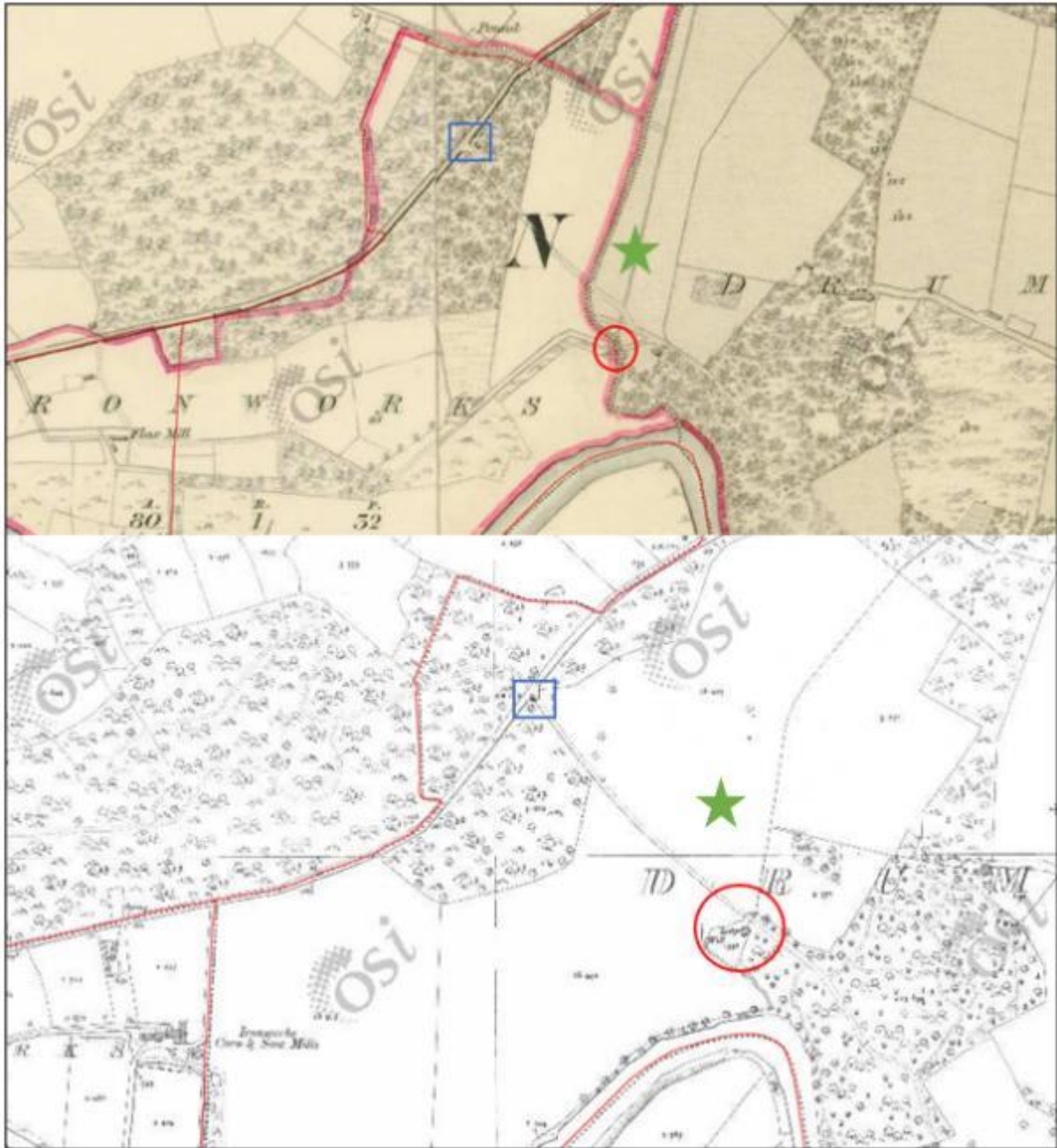
Plate S1-15: View of tail race (F-1-07) from mill at Ironworks, Ch. 2+450, facing north

Drumboe Castle Demesne

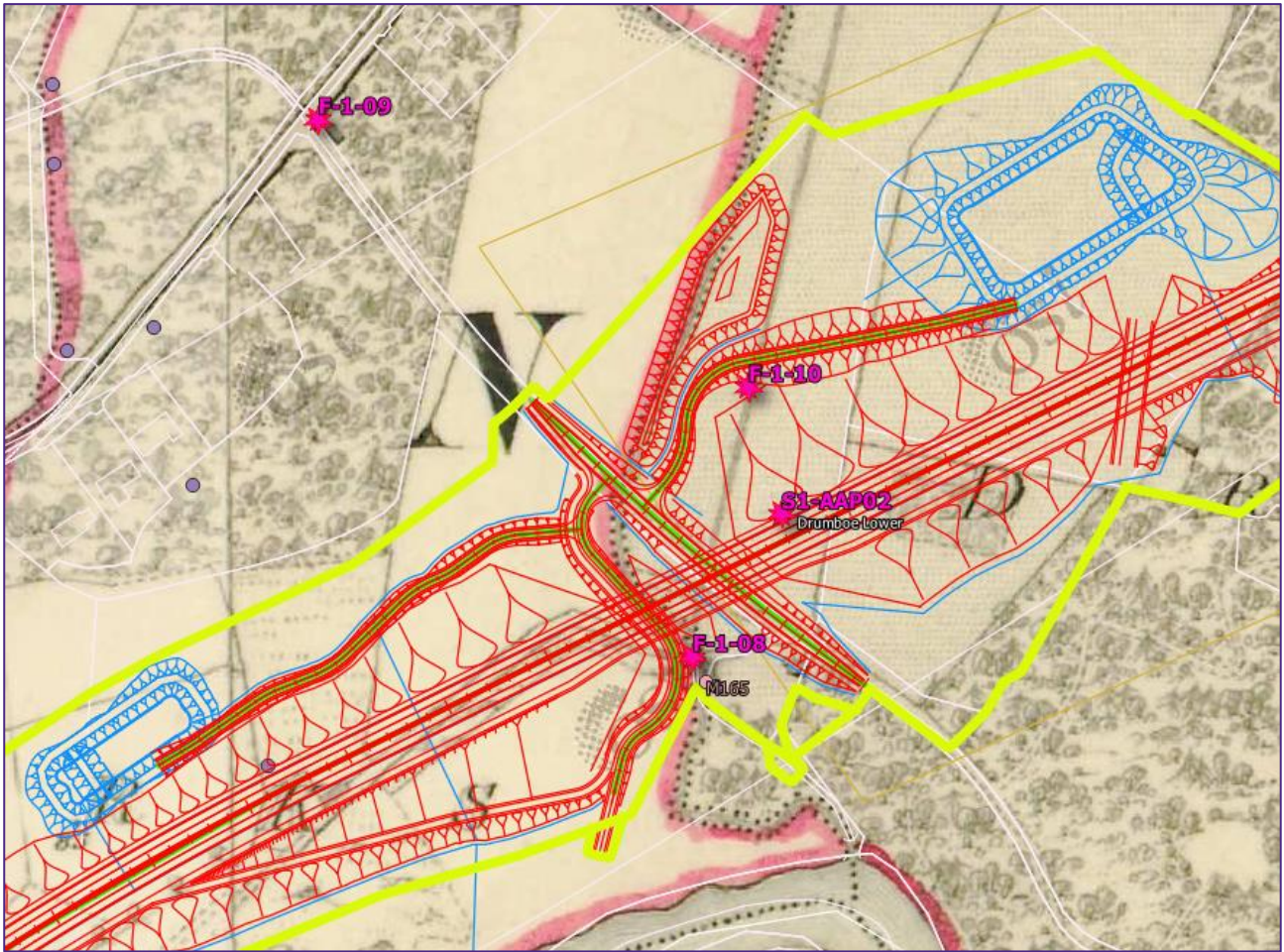
The land to the north of the River Finn is greatly improved, forming part of the demesne of the former Drumboe Castle (see **Plate S1-16**). There are several undulations throughout although overgrown with high grasses during survey. A former bridge (Ref. F-1-08) was noted at the eastern corner of a field at Ch. 3+025, (ITM 613025, 895320) just south of the existing road that leads through Drumboe Demesne to the 'west gates' (Ref. F-1-09) ITM 612857, 895561 (see **Plate S1-17**). This bridge corresponds with a road leading to the mill, depicted on the 1st ed OS map, but not on subsequent OS editions. The also bridge crosses a stream that defines the townland boundary between Ironworks and Drumboe per the 1st ed OS map (c. 1840) but interestingly, the boundary is re-defined, and the stream infilled by the publication of the 2nd ed OS (1905). Local information refers to an underground stream with flagstones over (Ref. F-1-10) in the field immediately east of the marked townland boundary on the 1st ed OS (possibly along the field boundary ITM 613050, 895441 NW of Ch. 3+100). A lodge and well is indicated at this bridge area on the 2nd ed OS map (ITM 613071, 895317), associated with the demesne, but no surface traces exist today.



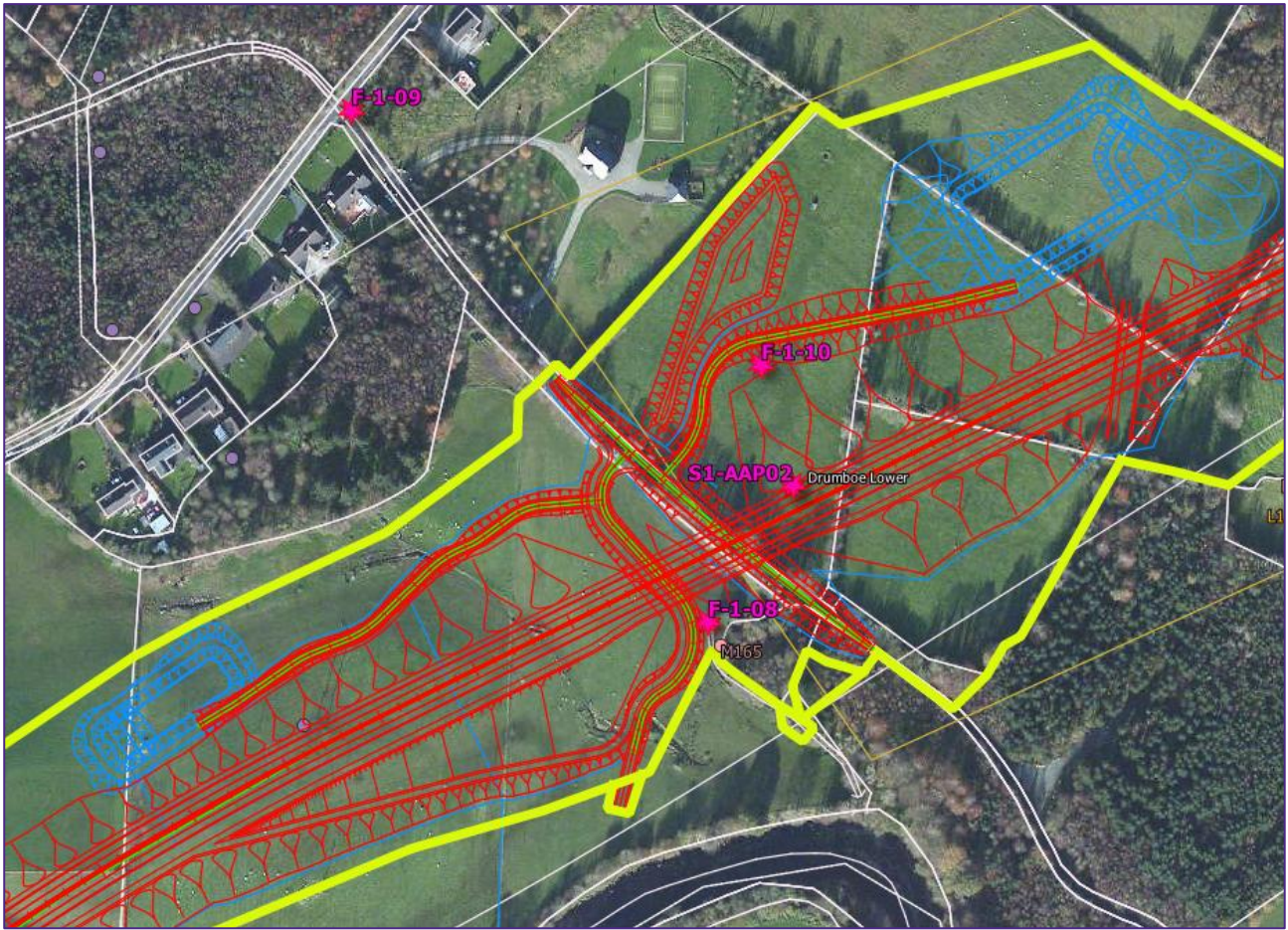
Drumboe Castle demesne layout with alignment overlay per 1st ed OS mapping (1830s)



1st edition OS (top) c. 1830 and 2nd ed OS (bottom) 1905, showing 'west gates' (blue square) and bridge/lodge/well arrangement (red circle) and flagged underground stream in field (green star) at Drumboe demesne



1st ed OS with proposed mainline alignment (Ch. 3+000) overlay showing location of 'west gates' (F-1-09) and bridge/lodge/well arrangement (F-1-08) at Drumboe demesne



1st ed OS (top) and proposed mainline alignment (Ch. 3+000) showing location of 'west gates' (F-1-09) and bridge/lodge/well arrangement (F-1-08) at Drumboe demesne



Plate S1-16: View across fields from Ch. 2+500 to Ch. 3+000, with former mill NIAH 40907708 to background (right)



Plate S1-17: View of infilled bridge feature F-1-08 near Ch. 3+025, Drumboe demesne, facing north

At Drumboe Lower and within the demesne area, the proposed alignment traverses up hill in a north-easterly direction, crossing a mortared stone wall (Ref. F-1-11) at Ch. 3+150 (ITM 613137, 895414) (see **Plate S1-18**).



Plate S1-18: View of mortared wall F-1-11 at Ch. 3 +150, facing north

The land rises in altitude (40m OD to a 75m OD drumlin summit) between Ch. 3+000 and Ch. 3 +800 (see **Plate S1-19**). The route skirts to the immediate northwest of a recorded 'site of' a church (RMP DG078-005-- -) located in what is known locally as the 'Abbey field' at Ch. 3+400 (ITM 613388, 895442). A raised sub-rectangular area is discreetly visible on-site and on digital mapping (Griffith's Valuation, and both Hi-Res LiDAR DTM and Geophysical Survey prepared for the proposed development) near the southeast corner of the 'Abbey field', potentially the location of the church and per the recorded RMP location records (see **Plate S1-20**). Extensive vistas are experienced from this general location, particularly to the west towards the Bluestack Mountains and southwest over Ballybofey to Barnesmore Gap (see **Plate S1-21**).



Plate S1-19: View northeast from Ch. 3 +280 showing commencement of rise in topography at Drumboe Lower

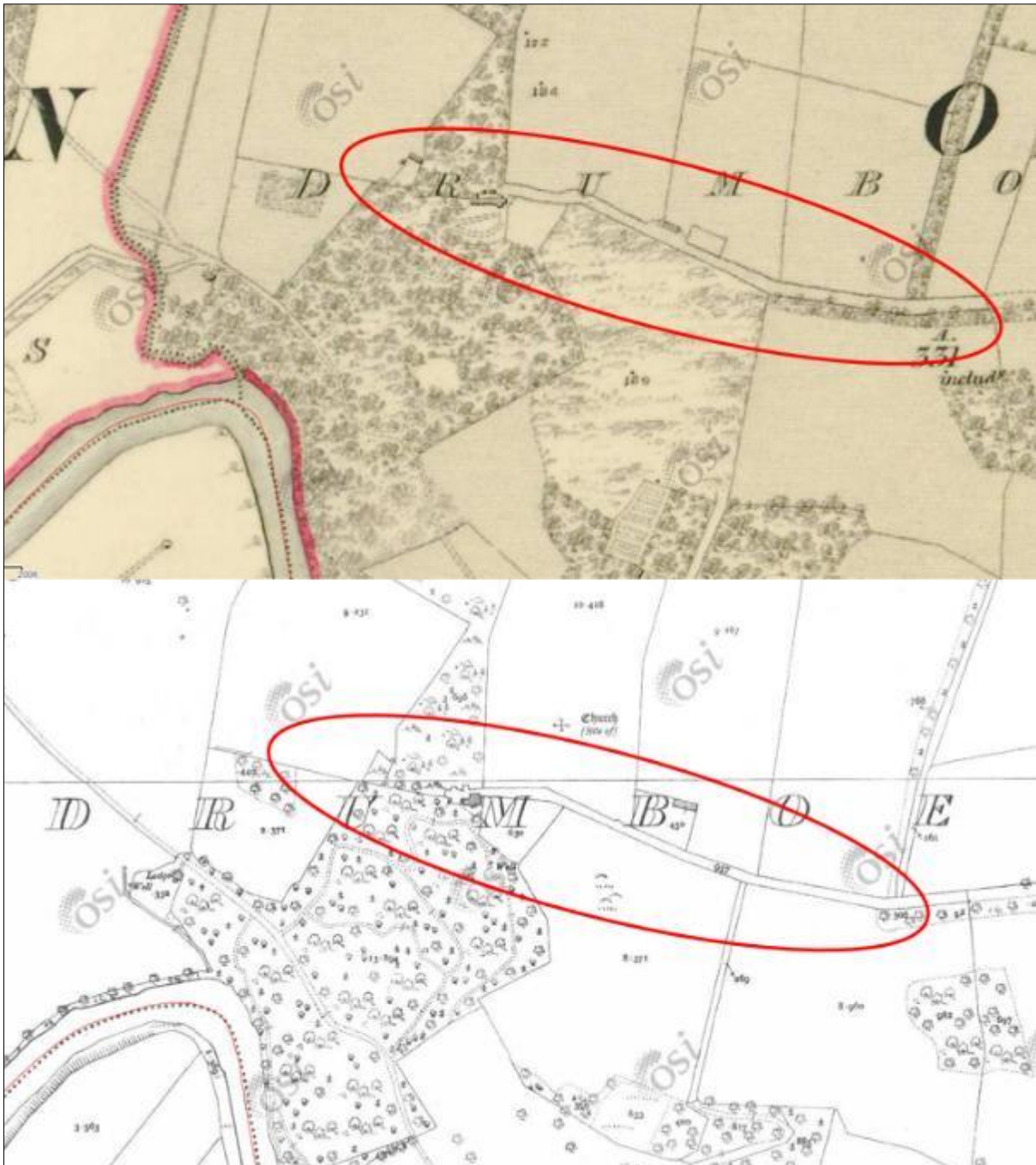


Plate S1-20: View of level raised area of sub-rectangular anomaly in the 'Abbey field', facing southwest

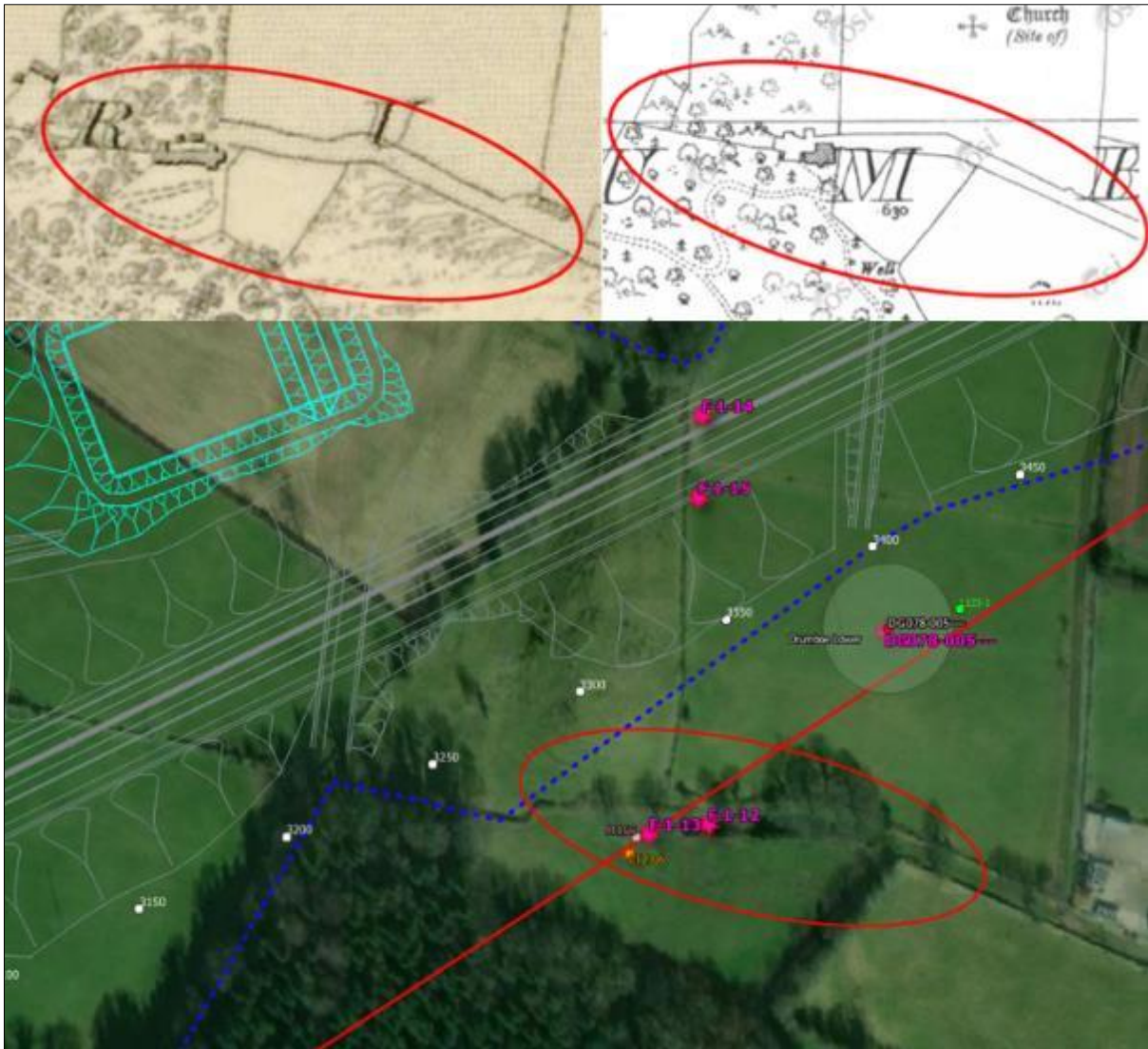


Plate S1-21: View southwest from the 'Abbey field', showing Barnesmore Gap in background (note walled avenue F-1-12 located to south of field boundary)

A walled avenue/laneway (Ref. F-1-12), approximately 5m in width and extending east-west, bounds the southern side of the 'Abbey field' (ITM 613334, 895383) (see **Plate S1-22**). This avenue, terminating at a complex of buildings with associated woodland and pleasure walkways, per the 1st and 2nd ed OS maps, including that with a 'cruciform' type gable end (Ref. F-1-13), incorporates the elevations (in part) on the northern side of the noted structures (ITM 613316, 895380).



1st edition OS (top) c. 1830 and 2nd ed OS (bottom) 1905, showing walled avenue terminating at building complex and associated woodland and pleasure walkways, within Drumboe demesne



1st edition OS (top left) c. 1830 and 2nd ed OS (top right) 1905, with Bing Satellite imagery (bottom) showing walled avenue F-1-12 and fossilised elevation to building complex F-1-13 at northern portion of walling, located south of 'abbey' site RMP DG078-005--- within Drumboe demesne



Plate S1-22: View of wall-lined avenue F-1-12 to the south of the 'Abbey field', facing west

The eastern portion of the northern wall is a mostly rebuilt low drystone wall that retains the 'Abbey field', while the southern parallel wall is a 2m high mortared stone wall with evidence of possible putlog holes and openings (see **Plate S1-23**). A ground-fast cast iron gate post was noted where the avenue transitions to a single wall (see **Plate S1-24**).



Plate S1-23: View of a putlog hole to northern wall of avenue, F-1-13, Drumboe Lower, Ch. 3+300



Plate S1-24: View of cast iron gatepost, facing east, along avenue at Drumboe Lower Ch. 3+300

At Ch. 3+300 and Ch. 3+500 the proposed alignment traverses substantial drystone walls (Ref. F-1-14 and Ref. F-1-16) that form both the western and eastern boundaries of the 'Abbey field' (see **Plate S1-25** and **Plate S1-26**). The substantial nature of these wall and those of the avenue to the south are striking and may be suggestive of an available source of stone (the ruined abbey) at this location. In addition, a pillar stone (Ref. F-1-15) with recent cross-inscription is inserted along the western boundary of the 'abbey field' (ITM 613331, 895483) (see **Plate S1-27**).



Plate S1-25: View of western stone wall field boundary of the 'Abbey field', F-1-14, towards south (Ch. 3+350)



Plate S1-26: View of eastern stone wall field boundary (F-1-16) of the 'abbey field', facing northeast



Plate S1-27: View of cross-inscribed pillar-stone (F-1-15) inserted along western stone wall field boundary to the 'abbey field'

An anomaly noted in the LiDAR assessment Ref. L123-4, located to the northwest of Ch. 3+600 within woodland, was inspected and appears to be a natural rise in topography with rock outcropping, although sited within dense woodland it was difficult to define (see **Plate S1-28**). A holy well (SMR DG078-005001-) (known locally as the 'Abbey well') is recorded on ASI records as unlocated. It was found to be located to the north of the 'Abbey field' at Ch. 3 +400 (ITM 613340, 895557). This well forms part of a natural stream is located close to the eastern end of a wooded area, adjacent a field boundary, and is venerated (see **Plate S1-29**).



Plate S1-28: View of anomaly L123-4, within woodland northwest ch. 3+600, facing west



Plate S1-29: View of the 'Abbey Well' S1-CH01, facing northeast, Ch. 3+400

An anomaly noted on aerial imagery (S1-AP01) northwest of Ch. 00 Side Rd at ITM 613615, 895915, as a possible enclosure site has been subject to LiDAR review (Ref. L123-2) (AMS Ltd. 2020) and geophysical survey (Earthsound Geophysics 2020). The latter identified a possible enclosing ditch feature (Earthsound Geophysics, 2020) (see **Plate S1-30**).



Plate S1-30: View of AP site S1-AP01, facing northeast, Ch. 00 Side Rd

Ch 4+000 – Ch. 5+700 Mainline

The townlands of Magherapaste and Drumboe Upper (Ch. 4+000 – Ch. 5+000) comprise lands of improved pasture bounded by hedges, stone walls, drainage ditches and associated field banks often lined by post-and-wire fences. The land generally rises to the northeast along the proposed alignment. This topographical trend continues into the townland of Backlees where the proposed alignment passes to the northwest of Dunwiley fort (RMP DG078-003---) (ITM 614615, 896773).

At Ch. 4+400 there is a vernacular long-house (RPS/NIAH 40907834) within a farm complex at Drumboe Upper (ITM 613857, 896232), whilst in the neighbouring farm (also possible 18th century origins) to the immediate east, there is a robust stone outbuilding (S1-BH02) with a wall-mounted date plaque of '1904' (ITM 613969, 896215) (see **Plate S1-31**).



Plate S1-31: View of front elevation to outbuilding S1-BH02, Ch. 4+400, Drumboe Upper

The outer embankment of Dunwiley Fort (RMP DG078-003---) southeast of Ch. 5+200 forms the townland boundary between Backlees and Dunwiley (**Plates S1-32 – S1-34**). Part of the outer embankment has been modified in the form of a drystone retaining wall built in a herring bone fashion. This unusual herring bone pattern is likely related to Victorian beautification of the fort (see **Plate S1-35**). The elevated position of the site provides vistas in all directions (albeit glimpse views due to heavy mature tree-growth at the interior area of the fort) including the rising drumlin ridge to the north (**Plates S1-36 and S1-37**) and extensive wider views to the southeast, south and southwest towards the riverine lowlands of the River Finn beyond (see **Plate S1-38**).



Plate S1-32: View from south-east towards Dunwiley Fort



Plate S1-33: View from west towards Dunwiley Fort



Plate S1-34: View of Dunwiley fort from chainage 5 +200, facing southeast



Plate S1-35: View of herring bone retaining wall at Dunwiley fort, facing northeast



Plate S1-36: View towards north/northwest and area of proposed main alignment from base (outside) of Dunwiley Fort (north-western side)



Plate S1-37: View to north and proposed development from interior of north-western quadrant of Dunwiley Fort



Plate S1-38: View towards east from interior area of Dunwiley Fort

A possible archaeological anomaly consisting of a raised sub-circular area was noted (Ref. F-1-17) to the north of Dunwiley fort at ITM 614570, 897121, to the northwest of the proposed alignment at Ch. 5+400 (see **Plate S1-39**). A trigonometry point (marked on early Ordnance Survey maps) and known locally as the 'Shepherd's Seat' (Ref. F-1-18) at ITM 614624,897404, located northwest of the proposed alignment (Ch. 5+800) was inspected. This site provides panoramic views of the local and wider landscape (see **Plate S1-40**).



Plate S1-39: View of sub-circular anomaly, F-1-17, northwest of Ch. 5+400, facing north



Plate S1-40: View southwest from trigonometry point ('Shepherd's Seat') F-1-18 northeast of Ch. 5+800, with Dunwiley fort visible at centre distance

Ch. 5+700 – Ch. 8+600 (end) Mainline

The proposed alignment traverses north-eastward into the townland of Teevickmoy, where overall field size generally decreases, along with the land quality. The fields are bounded by a combination of post-and-wire fences, drainage ditches and some stone walls and hedges. The site of possible LiDAR anomaly L109-1 was inspected at ITM 614875, 897727, northwest of Ch. 6+200. This site is noted as a possible barrow¹ and appears to occupy a natural rise in topography and commands panoramic views (see **Plates S1-41 & S1-42**). A denuded stone wall (Ref. F-1-19) was also noted at the bottom of the slope to the southwest (ITM 614858, 897683) (**Plate S1-43**).

¹ This site was subsequently deemed by AMS Ltd (2020b) as non-archaeological and likely to represent rough ground and rock outcropping along a ridge



Plate S1-41: View of anomaly L109-1, northwest of Ch. 6+200, facing east



Plate S1-42: View of anomaly L109-1, facing southwest, northwest of Ch. 6+200, showing rock outcrop



Plate S1-43: View of stone wall F-1-19 to southwest of anomaly L109-1, Ch. 6+200, facing northeast

A sub-circular anomaly (Ref. F-1-20) measuring approximately 5m in diameter was noted at ITM 614946, 897781 (just west of Ch. 200 – (west) junction to Mullandrait Link Road) (see **Plate S1-44**). LiDAR anomaly L110-1 located east of Ch. 150 (east) junction to Mullandrait Link Road, was inspected (ITM 615382, 897813) and appears to be farmyard clearance. Although it is more-or-less U-shaped in plan, it does not appear to be archaeological (see **Plate S1-45**). LiDAR anomaly L106-2 located at Ch. 6+700 (ITM 615349, 898077) was inspected and represent may be the remains of a disturbed and overgrown lime kiln indicated on the 1st ed OS (c. 1840) at the fork in the roadway (see **Plate S1-46**).



Plate S1-44: View of anomaly F-1-20 Ch. 200, (Mullandrait Link Rd) with anomaly L109-1 in background, facing southwest



Plate S1-45: View of anomaly L110-1, Ch. 150 (Mullandrait Link Rd) facing northeast



Plate S1-46: View of anomaly L106-2, at Ch. 6+700, possible lime kiln, facing northwest

The proposed alignment traverses through a hardwood plantation near Ch. 7 +000 and improved pasture between Ch. 7 +000 – Ch. 7 +800. The fields are bounded by thick hedges with field banks and drains, many also lined by post-and-wire fences (see **Plate S1-47**). There are no above ground remains of recorded ringfort RMP DG069-028--- located southeast of Ch. 7+200 (ITM 615811, 898332) (see **Plate S1-48**).



Plate S1-47: View across landscape at Ch. 7+500, facing northeast



Plate S1-48: View of location of DG069-028---, Ch. 7+200, facing east

The lands to the north of Ch. 8+000 (northern portion of Teevickmoy and townlands of Meenavoy and Magheracorrán) is generally of unimproved pastureland, with abundant drainage ditches, areas of marshy ground and hazel scrub. There was no obvious trace of bullaun stone (RMP DG069-023---) recorded as located to the west of the proposed alignment at Ch. 100 (northern terminus junction). This marshy area is considered to be of moderate archaeological potential, particularly for site types such as *fulachta fiadh* and burnt spreads and forms part of area of archaeological potential S1-AAP06.

Mullandrait Link Road Ch. 00 – Ch. 3+750

The proposed Mullandrait Link Road alignment connecting the N15 at the south and the N13 and proposed mainline alignment to the north/northwest, traverses a landscape of varying quality of pastureland. Traversing northwards from the N15 at Mullandrait (Ch. 3+750 to Ch. 3+200) the fields consist of good quality pasture, bounded by hedges lined with post-and-wire fences, with some drainage ditches and banks also present.

The former Workhouse/Famine graveyard (RPS/NIAH 40907836) located to the rear of St Joseph's Community Hospital (ITM 616012, 895514) is located 312m west of Ch. 3+450 and the edge of the proposed Link Rd alignment (see **Plate S1-49**).



Plate S1-49: View of workhouse/famine graveyard (RPS/NIAH 40907836) to rear of St. Joseph's Hospital, facing north

There are some elevated areas that provide level platforms and are located immediately west of a stream forming the townland boundary of Treanamullin and Castlebane, that would have been conducive to past occupation throughout (Ch. 3+200 – Ch. 3+350 and Ch. 2+950 – Ch. 3+150) form part of S1-AAP05 (see **Plates S1-50** and **S1-51**). It is noted that the placename reference for Castlebane refers to 'white cashel' for which there is no recorded evidence to date. Ruins of a lime kiln (Ref. F-1-21) were noted outside the assessment Study Area at ITM 616154, 895993, west of Ch. 00 Side Rd (see **Plate S1-52**).



Plate S1-50: View from Ch. 3+200 towards Ch. 3+350, Mullandrait Link Rd, facing south



Plate S1-51: View from Ch. 2+950 towards Ch. 3+100, Mullandrait Link Rd., facing south



Plate S1-52: View of ruined lime kiln F-1-21 at Castlebane, west of Ch. 00 Side Rd (Mullandrait Link Rd)

Traversing northwards and crossing the stream at Ch. 2+900, the fields turn to unimproved pasture with hedge-lined ditches and whin (scrub). This trend continues to the north of Cooladawson Road, where the unimproved, low-lying nature of some of the fields (between Ch. 2+750 to Ch. 2+400) may suggest that the area forms part of a possibly re-directed stream and its catchment area (see **Plate S1-53**). Land drainage improvements are evident on both the 1st (c. 1840) and 2nd ed OS (c. 1905) mapping, with deep drainage ditches common along with some high field banks and areas of hazel scrub, including a high and wide bank (**Ref. F-1-22**) running east to west with a ditch either side noted at Ch. 2+425 (ITM 616517, 896477). These banks are used as a trackway into this wet area (see **Plate S1-54**).



Plate S1-53: View towards north, from chainage 1200 Mullandrait Link Road



Plate S1-54: View of trackway F-1-22 at chainage 2+425, Mullandrait Link Rd., facing north

The proposed Link Rd alignment traverses northwards and crosses the hedge-lined ditch and bank which forms the townland boundary of Knockfair/Castlebane at Ch. 2+200. At this location, the landscape changes significantly in overall quality and is accompanied with a slight change in altitude (80m OD). The field centred on Ch. 2+100 (ITM 616438, 896752) slopes to the south and has good views towards the south and southeast (see **Plate S1-55**). At Ch. 1+950 (ITM 616330, 896853) the proposed link road crosses a well-

defined trackway that forms the southern boundary of a forested area and the townland boundary of Knockfair/Mullaghagarry (see **Plate S1-56**). The land dis-improves (heavy scrub) upon crossing the townland boundary (stream) from Knockfair into Tircallan at Ch. 1+750. The land is similarly marginally improved on approach to the N13 (Ch. 1+600 – Ch. 1+400).



Plate S1-55: View northwest from Ch. 2+150 to Ch. 2+050 Mullandrait Link Rd



Plate S1-56: View of trackway and Knockfair/Mullaghagarry townland boundary at Ch. 1+950, facing west-northwest

The Mulagarry 'Steeple' Tower (RPS 40906908) is a folly built within the former Tircallen demesne and located 1.5km northeast of the proposed development at the area of the Mullandrait Link Road. It is sited on an elevated position within commercial forestry (**Plate S1-57**). There are no views afforded to the south due to dense woodland (despite elevated position and no tree foliage at time of survey). Views are afforded to the west (recently felled forestry), with glimpse views of the N13 to the northwest (largely hidden behind forestry and within low-lying topography) (**Plate S1-58**). The distant topography in this westerly direction rises to southeast facing slopes and the general area of the proposed main alignment at Dunwiley/Teevickmoy (**Plate S1-59**).



Plate S1-57: View of Mulagarry 'Steeple Tower' from north



Plate S1-58: View to west across felled forestry and distant horizons beyond



Plate S1-59: View to southwest and rising southeast facing slopes from Mulagarry Steeple Tower

To the north of the N13, the topography rises slightly and is accompanied by an improvement in the quality of the land. The improved pasture bounded by post-and-wire lined hedges continues north-westwards towards the townland of Dunwiley from chainage Ch. 1+400 to Ch. 850. The land has views to the south and southeast and a general southeast facing aspect (see **Plate S1-60**). From chainage Ch. 800 to Ch. 650

(junction link with proposed mainline) the land is less improved and is bounded by hedges lined by drainage ditches and post-and-wire fences.



Plate S1-60: View from Ch. 1+050, Link Rd northwest of N13, facing southeast