

Appendix C17.13

Section 3 Detailed Walkover Survey and Photographic Record

Walkover Survey –

Ten-T Section 3, Manorcunningham to Lifford, Co. Donegal

(8th – 10th, 16th, 20th & 21st July 2020, 21 Jan 2022, 21 Sep 2022)

Ch. 00 – Ch. 2+000

Ch. 0+000 to 0+300 comprises an area of well-drained and managed pasture with a gradual southeast slope, bounded by a mature tree-line to the existing N14 road carriageway to the south (**Plate S3-01**). Located to the north of Ch. 0+350 (ITM 623693, 910767) is 'Gort Presbyterian Manse' (NIAH 40827011) (**Plate S3-02**) and its attendant grounds which is approached from a gated entrance and tree-lined laneway to the east (**Plate S3-03**). Located within Raymoghly townland, it is noted that a recorded early medieval ecclesiastical church site (DG054-032001-) is sited c. 600m to the northeast of the edge of the proposed alignment (ITM 624167, 911050) (outside the assessment area). In addition, Pluck standing stone (DG054-038--- National Monument Ref. 453) sited on the southern banks of the Corkey River, is located c. 430m southwest of Ch. 0+200, (ITM 623311, 910275) outside the Study Area (**Plate S3-04**). Vernacular outbuildings 'Black Bush' (M501) are located at the link road area in Raymoghly, south of the main alignment and are directly impacted (**Plate S3-05**), whilst Connaghan's Bridge (NIAH 40905456) is located further to the south (**Plate S3-06**).



Plate S3-01: View to west/northwest at Glebe/Raymoghly Ch 0+250 – Ch. 0+300



Plate S3-02: Front (east) elevation of Gort Presbyterian Manse (NIAH 40827011)



Plate S3-03: Entrance gates to Gort Presbyterian Manse (NIAH 40827011)



Plate S3-04: Pluck Standing Stone DG054-038---/National Monument Ref. 453, facing north



Plate S3-05 Vernacular stone outbuildings at 'Black Bush' Ref. M501



Plate S3-06 Connaghan's Bridge NIAH 40905456 (overgrown) facing southwest

Ch. 0+400 to Ch. 0+800 comprises an area of well-drained but rough pasture with a gradual southeast slope leading down to wet marshy land bounded by a river, which forms the townland boundary of Raymoghly/Labbadish (ITM 624092, 910537) (**Plate S3-07**) to the southeast, and by a mature tree-line to the existing N14 road carriageway to the south. The wet marshy land between Ch. 0+600 to Ch. 0+800 (ITM 623979, 910458) has the potential to reveal site types such as *fulachta fiadh* and burnt spreads due to ground conditions and proximity to the existing river (**Plate S3-08**) (and forms part of S3-AAP01).



Plate S3-07: View to northeast of river and Raymoghly/Labbadish townland boundary, Ch. 0+750 – Ch. 0+800



Plate S3-08: View to northwest of proposed alignment at Ch. 0+750 – Ch. 0+800

Ch. 0+800 to 1+900 comprises of a mixture of well-drained, undulating and managed pasture and tillage, along with patches of wet marshy land near river and streams. Located north of Ch. 1+000 is the location of an excavated cist (DG054-039----) (ITM 624343, 910582). To the north of Ch. 1+000, LiDAR anomaly L306-1, a possible mill race (ITM 624390, 910745) (also marked as a weir on 1st ed OS map (c. 1840) was identified, and upon inspection the field in question was heavily disturbed, however a possible location for a portion of the (infilled) mill race was identified by a raised area of land close to the river (**Plate S3-09**). This feature is located outside the Study Area. A patch of low-lying wetland was identified south of Ch. 1+100 close to a stream and may retain archaeological potential.



Plate S3-09: View to southwest of mill race location (L306-1), north of Ch. 1+000

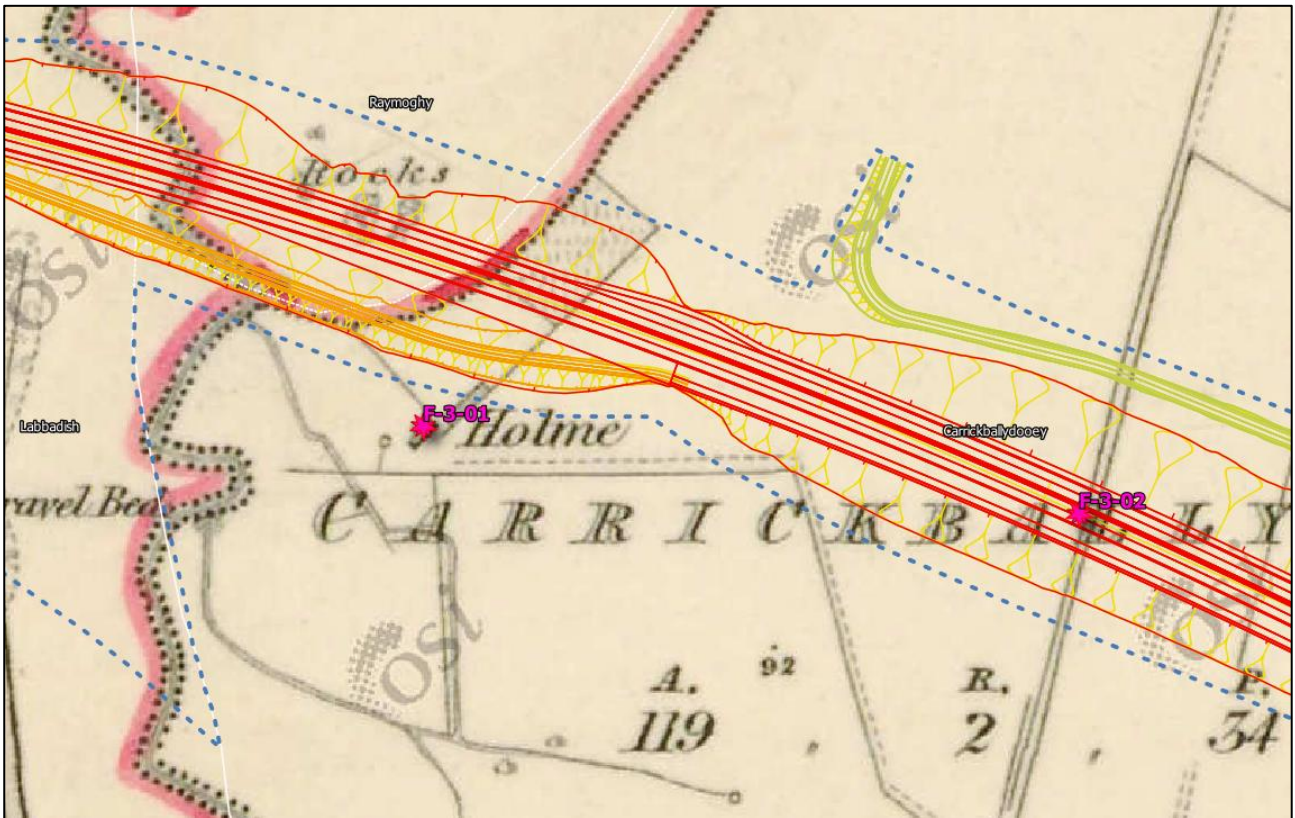
South of Ch. 1+400 just outside the Study Area are the locations of a standing stone (DG054-040----) (**Plate S3:10**) and a cist (DG054-041----) (excavated - no visible trace) (ITM 624719, 910164). At Ch. 1+300 – Ch. 1+400 a large pasture field is bounded to the south and northeast by a mature treeline and large bank and ditch (**Plate S3:11**) and (**Plate S3-12**) which previously formed a laneway (Ch. 1+450) accessing a now removed farmstead (with a well) to the west at Ch. 1+300 (ITM 624585, 910362) named 'Holme' (Ref. F-3-01) and 'Carrickballydooley' (Ref. F-3-02) farmstead to the south at Ch. 1+580 per the 1st ed OS map (c. 1840) (ITM 624856, 910326) (see **Plate S3-12**). There is rock outcropping noted to the north of the 'Holme' farmstead location at Ch. 1+250.



Plate S3-10: View to northwest of standing stone (DG054-040----), south of Ch. 1+400



Plate S3-11: View to north of field boundary/laneway area at Ch. 1+400



1st ed OS map (c. 1840) showing laneways and 'Holme' farmstead at Ch. 1+300



Plate S3:12: View to west of Ch. 1+300 – 1+400 and former 'Holme' farmstead location

Between Ch. 1+800 – Ch. 1+850 there is a former path lined with mature trees was identified (**Plate S3-13**) which forms the townland boundary of Carrickballydooley and Ballyboe. At Ch. 1+900 within the townland of Ballyboe the location of a possible 'fairy tree' (landowner pers. comm.) (Ref. F-3-03) (ITM 625134, 910177) (**Plate S3-14**) was inspected at the foot of a steep sloped hill near the local road. No votive offerings were observed at the time of visit and the tree is a mature sycamore (typically native hawthorn is the preferred species). The elevated ground to the rear of the tree was assessed but nothing of archaeological potential was observed on ground surface levels.



Plate S3-13: View to north of laneway with mature trees that forms townland boundary of Carrickballydooley/Ballyboe between Ch. 1+800 – 1+850

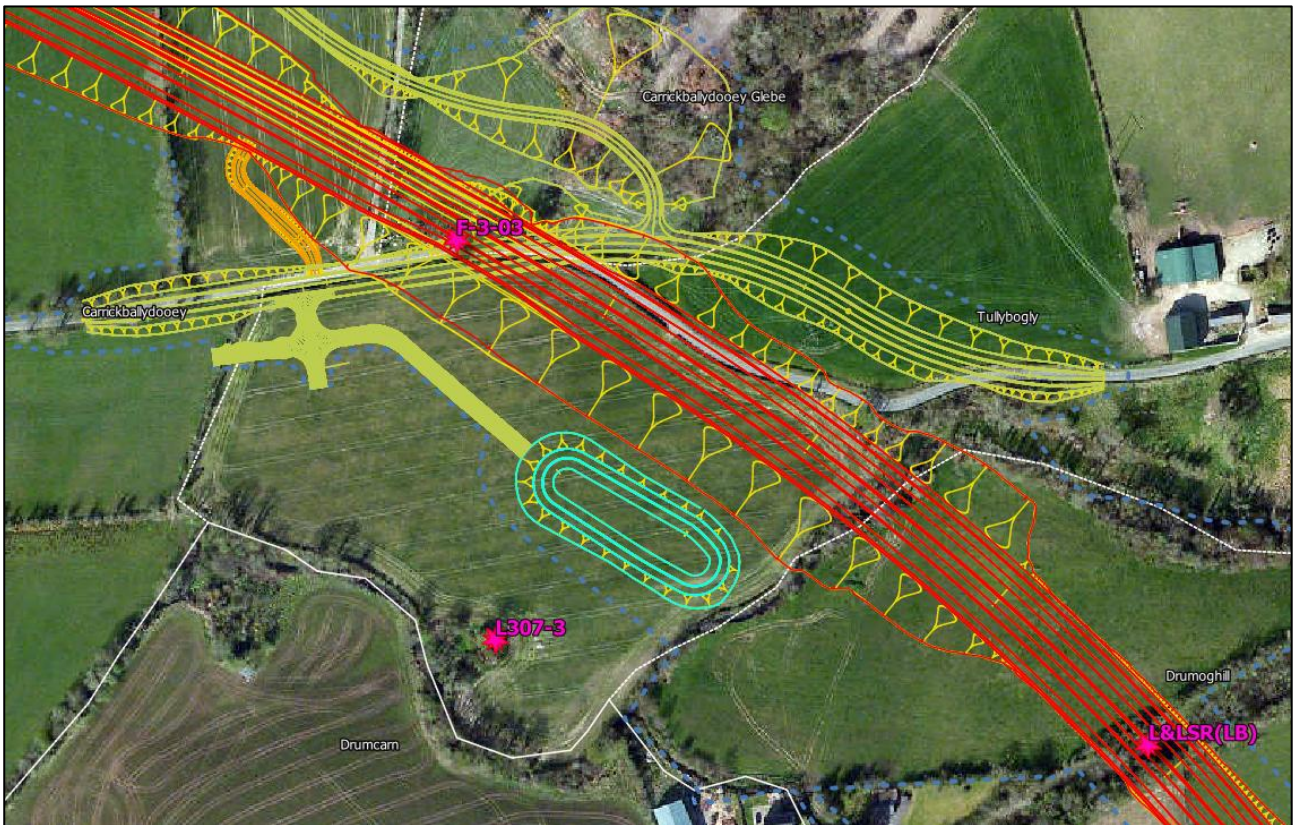
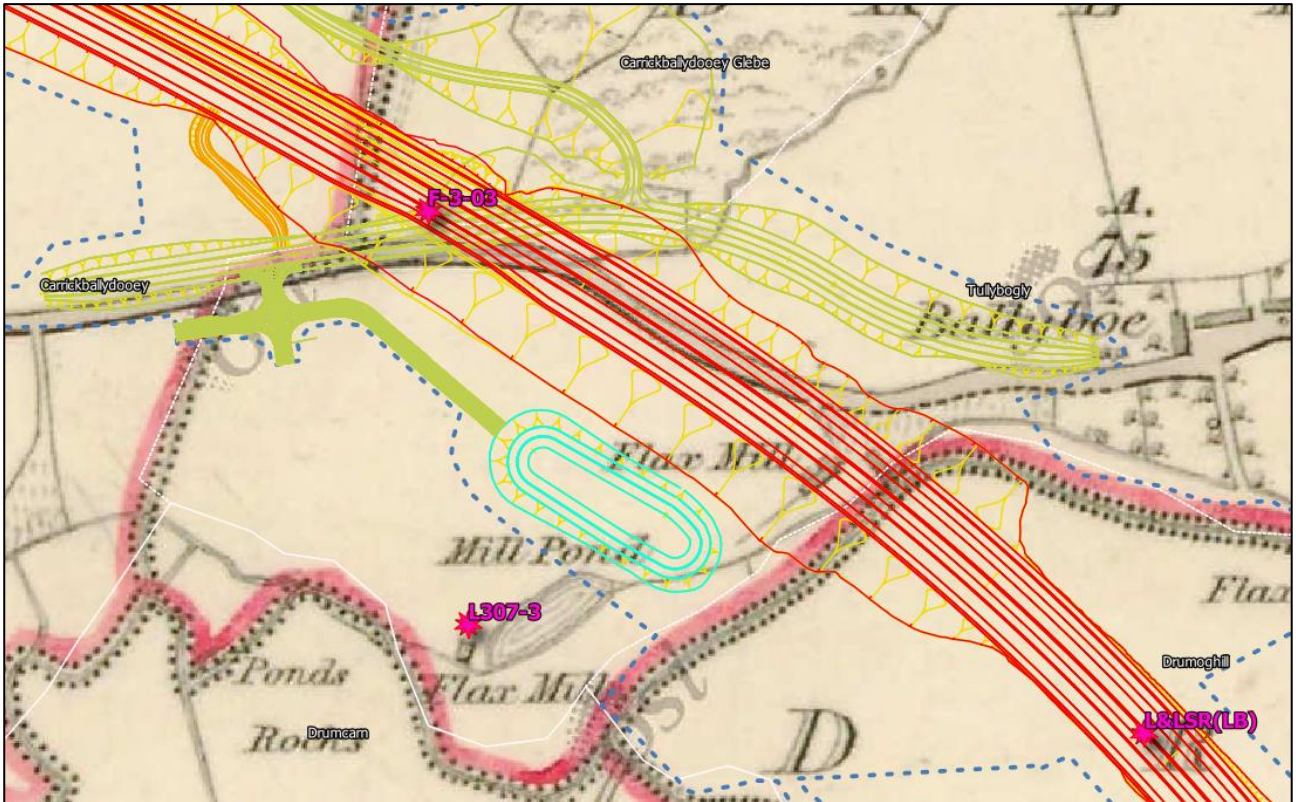


Plate S3-14: View to northwest of possible fairy tree (per landowner) Ch. 1+900

Ch. 2+000 – Ch. 3+600

Flax mill (M532) identified south of Ch. 2+000 – Ch. 2+100 (ITM 625150, 910013) could not be accessed due to during survey due to the presence of crops and non-landowner permission within this field. However satellite (Bing) imagery appears to indicate extant partial ruins of the flax mill at this location.





1st ed OS (c. 1840) (top) and satellite imagery (bottom) of flax mill M532

The area of Ch. 2+200 – Ch. 2+600 comprises of a mixture of well-drained undulating and managed pasture/tillage. Just beyond the 300m design corridor, northeast of Ch. 2+300, LiDAR anomaly (L307-4), a possible mill race, was inspected during field survey at ITM 625618, 910062. Noted on the south bank of a stream/river that forms the townland boundary of Ballyboe/Drumoghill, it is also close to a disused railway bridge (NIAH 40905447) (**Plate S3-15**). The site is not easily identifiable due to vegetation overgrowth, but a portion appears to be that of a stone lined mill race, horseshoe in shape and running from a southeast to northwest direction for approximately 2 meters (**Plate S3-16**). These features are located outside the Study Area, although remains of the former Londonderry & Lough Swilly Railway (Letterkenny Branch) railway line embankment traverses the alignment at Ch. 2+250 at Drumoghill (ITM 625418, 909970).



Plate S3-15: View to northwest of disused railway bridge (NIAH 40905447) northeast of possible mill race (L307-4), Ch. 2+300



Plate S3-16: View towards southeast of possible stone-lined mill race (L307-4), northeast of Ch. 2+300

The area between Ch. 2+300 – Ch. 2+500 is considered to have a high level of archaeological potential due to the undulating and well-drained pastureland and southerly aspect of same (**Plate S3-17**) (forms part of S3AAP01, central ITM 625492, 909853). In the northeast corner at Ch. 2+400 are the possible remains of a lime kiln (F-3-04) (per 1st ed OS map) (ITM 625516, 909875) (**Plate S3-18**), stone wall (**Plate S3-19**) and a disused laneway, lined with mature trees on both sides (**Plate S3-20**) blocked up by large boulders, all of which were heavily overgrown with vegetation during field survey.



Plate S3-17: View to north of undulating pasture at Ch. 2+400



Plate S3-18: View to southeast of possible lime kiln at Ch. 2+400

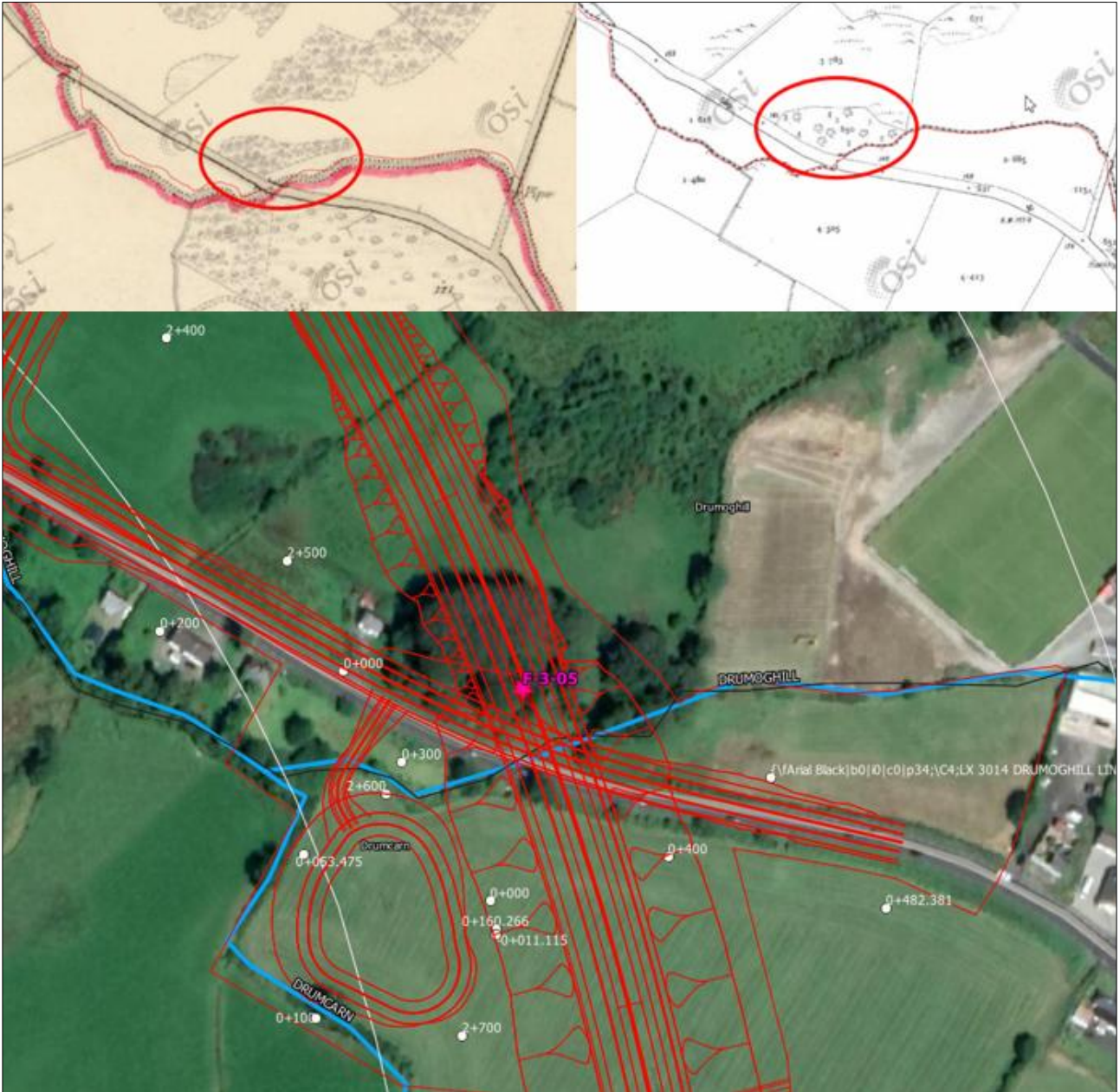


Plate S3-19: View to southeast of stone wall at Ch. 2+400



Plate S3-20: View to northeast of disused laneway blocked by large boulders Ch. 2+400

At Ch. 2+650 there is a tree stand (Ref. F-3-05) along the proposed alignment (ITM 625624, 909642) (**Plate S3-21**) which is sited on an elevated platform and bounded by the existing N14 to the south/southwest, and a stream to the south/southeast which also forms the townland boundary of Drumoghill/Drumcarn. Upon inspection the mature trees form a plantation not representative of a defined tree-ring *per se*. The curving line to the southeast respects the stream orientation at that point. The site occupies a discreet but prominent elevated platform and does afford good views of the surrounding rolling countryside.



1st ed OS (c. 1840) (top left), 2nd ed OS (c. 1905) (top right) and Bing satellite image (bottom) of tree plantation stand at Ch. 2+650



Plate S3-21: View to northwest of tree stand at Ch. 2+650, from N14

Located northeast of Ch. 2+600, outside the Study Area is a local venerated (unrecorded) Mass Rock (Ref. F-3-06) (**Plate S3-22**) (ITM 625827, 909803) within the townland of Drumoghill, Access is by way of the “The Moss” football pitch for Drumoghill FC and along a tarmacadamed pathway.



Plate S3-22: View towards northeast of mass rock, Drumoghill, northeast of Ch. 2+600

Ch. 2+700 – 3+600 comprises of a mixture of well-drained undulating and managed pasture/tillage (**Plate S3-23**). Located west of Ch. 3+100 are 2 no. identified LiDAR anomalies (L311-1) (ITM 625496, 909218) and (L311-2) (ITM 625465, 909193), however inspection was not permissible during survey due to the presence of livestock. Marked a 'lime kiln disused' on the 2nd ed OS map (c. 1905) and 'ponds' on the 1st ed OS map (c. 1830) respectively the site is currently located within a woodland pocket and outside of the Study Area.



Plate S3-23: View to southeast of Ch. 2+700 – Ch. 3+200

Ch. 3+600 - Ch. 7+400

Northeast of Ch. 3+600 are farm outbuildings (NIAH 40906245) at Mondooy Lower (ITM 625893, 908742) (**Plate S3-24**). The surrounding boundary to these building is comprised of thick vegetation and small trees to the west, and a line of mature trees to the south (**Plate S3-25**).



Plate S3-24: View to west of outbuilding (NIAH 40906245), northeast of Ch. 3+600



Plate S3-25: View to north of mature tree boundary, southern property boundary to NIAH 40906245, northeast of Ch. 3+600

Ch. 3+700 – 4+100 comprises of improved, well-drained and managed pasture within rolling terrain (**Plate S3-26**) and (**Plate S3-27**). Nothing of cultural heritage note was visible during field survey.



Plate S3-26: View to northwest, Ch. 3+400 – 3+600



Plate S3-27: View to southeast, Ch. 3+700 – 3+900

Ch. 4+100 – 4+400 comprises of well-drained and managed pasture with steep to gradual northeast to southeast sloping drumlin terrain running towards the N14 road carriageway to the east (**Plate S3-28**) and (**Plate S3-29**).



Plate S3-28: View to northwest, Ch. 4+200 – 4+400



Plate S3-29: View to northwest, Ch. 4+200 – 4+500

Ch. 4+500 – 4+600 comprises wet lowland pasture (ITM 626597, 908265) crosses a stream/river which also forms the Mondooney Middle/Doorable townland boundary (**Plate S3-30**). The area is considered a favourable location for site types such as *fulachta fiadh* and burnt spreads (**Plate S3-31**) and forms part of S3AAP02.



Plate S3-30: View to SE Ch. 4+500 – 4+600



Plate S3-31: View to SE river crossing Ch. 4+500 – 4+600

Ch. 4+700 – 5+200 comprises of a mixture of improved, well-drained and managed flat pasture and tillage. Nothing of heritage note was visible during field survey (**Plate S3-32**), (**Plate S3-33**) and (**Plate S3-34**).



Plate S3-32: View to west at Ch. 4+700



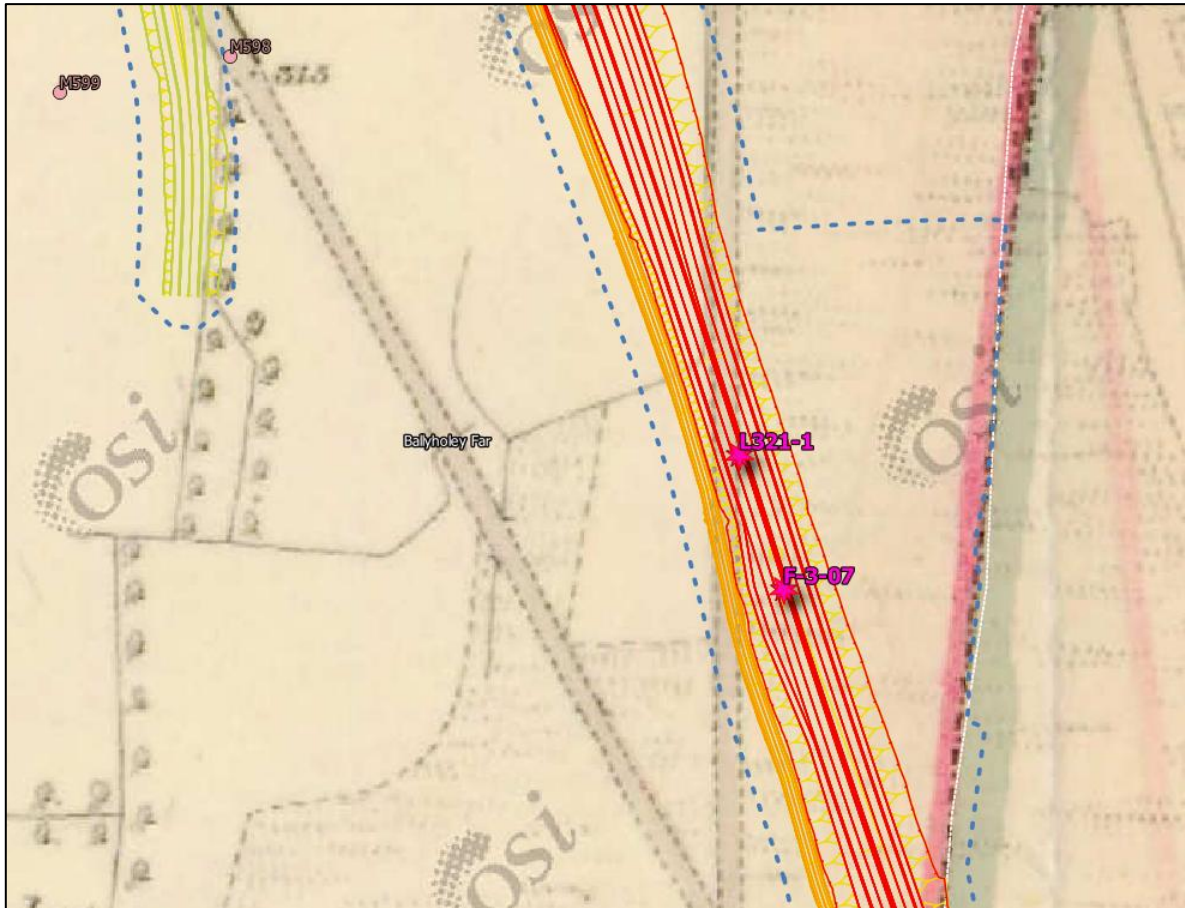
Plate S3-33: View to northwest at Ch. 4+700 – Ch. 4+900



Plate S3-34: View to northwest at Ch. 4+900 – Ch. 5+200

Ch. 5+300 – 6+300 comprises of flat marshy wetland pasture between Ch. 5+300 – Ch. 6+000 which gradually changes to undulating well-drained and managed pasture further south between Ch. 6+000 – Ch. 6+300 (**Plate S3-35**). The flat marshy wetland pasture (Ref. F-3-07) between Ch. 5+300 – 6+000 at Ballyholey Far (central point ITM 627293, 907427) is considered to be an area of high archaeological potential given the ground conditions (favourable to site types such as *fulachta fiadh* and burnt spreads) and the presence of a stream forming the townland boundary of Ballyholey Far/Drumatoland to the east, extending in a north-south orientation (**Plate S3-36**) and (**Plate S3-37**).

LiDAR anomaly (L321-1), a possible disused road, noted on the 1st ed OS mapping (c. 1840) traverses the proposed alignment at Ch. 5+600 but due to the presence of livestock further investigation was not feasible during field survey. Surface expression of the linear arrangement is visible on satellite imagery at this location (ITM 627276, 907479).



1st ed OS (c. 1840) roadway L321-1 (left) and Bing satellite (right)



Plate S3-35: View to north at Ch. 6+000 – Ch. 6+300



Plate S3-36: View to southeast at Ch. 5+400 – Ch. 5+900



Plate S3-37: View to northwest at Ch. 5+900

Ch. 6+400 – Ch. 7+000 broadly comprises flat marshy wetland pasture. The flat marshy wetland pasture between Ch. 6+400 – Ch. 6+800 (Ref. F-3-08) central ITM point 627706, 906497) is considered a favourable location for site types such as fulachta fiadh and burnt spreads, given ground conditions and proximity to a stream which also forms the juncture of townland boundaries between Ballyholey Far/Sheskinapoll and Slievebuck (Ch. 6+600) (ITM 627721, 906531) (**Plate S3-38**), (**Plate S3-39**) and (**Plate S3-40**).



Plate S3-38: View to southeast at Ch. 6+400 – Ch. 6+600



Plate S3-39: View to southeast of townland boundary Ballyholey Far/Sheskinapoll and Slievebuck at Ch. 6+600



Plate S3-40: View to southeast at Ch. 6+700 – Ch. 7+000

The area of Ch. 7+000 – Ch. 7+200 comprises of flat well-drained and maintained pasture which gradually changes to undulating pasture at Ch. 7+300 towards the southeast (**Plate S3-41** and **Plate S3-42**). A two-storey ruinous vernacular house structure (Ref. F-3-09) surrounded by trees and bushes is located towards the northeast between Ch. 7+000 and Ch. 7+100 on the verge of the N14 road carriageway (ITM 627941, 906201) (**Plate S3-43**). The house is indicated on the 2nd ed OS map (c. 1905) and a flax mill complex is also noted to the south at ITM 628012, 906039. Nothing of further heritage note was identified during field survey.



Plate S3-41: View to SE at Ch. 7+000 – 7+200



Plate S3-42: View to SE at Ch. 7+200 – 7+300



Satellite imagery showing ruined vernacular structure F-3-09



Plate S3-43: View to NW at Ch. 7+000 – 7+100 (F-3-09)

Ch. 7+400 – Ch. 9+000

Ch. 7+400 – Ch. 7+850 comprises of southeast sloping pasture, which gradually changes to undulating rough grazing pasture between Ch. 7+500 and Ch. 7+850, which is bounded to the southeast by the R236 road and N14 road carriageway to the east. The general topography and presence of a stream which also forms the townland boundary between Slievebuck and Carrickdawson (ITM 628073, 905744) is considered of fair archaeological potential (Ref. F-3-10) (**Plate S3-44**, **Plate S3-45**, **Plate S3-46** and **Plate S3-47**).



Plate S3-44: View to northwest at Ch. 7+400 – 7+500



Plate S3-45: View to northwest of stream and townland boundary of Slievebuck and Carrickdawson at Ch. 7+500



Plate S3-46: View to northwest at Ch. 7+650



Plate S3-47: View to northwest at Ch. 7+850

The area of Ch. 7+900 – Ch. 8+200 comprises of a mixture of both well drained and improved pasture and tillage, gradually changing from flat pasture at Ch. 8+000 to northeast sloping/undulating terrain, extending towards the N14 road carriageway and a commercial forestry plantation (**Plate S3-48**). The proposed alignment crosses the N14 road carriageway at Ch. 8+250 into flat, wet rough pasture (ITM 628357, 905068)

which is considered an area of archaeological potential (Ref. F-3-11), given ground conditions conducive to the presence of *fulachta fiadh* including proximity to the nearby stream which also forms the townland boundary of Dromore Big and Carnshannagh (**Plate S3-49**).



Plate S3-48: View to southeast at Ch. 8+150



Plate S3-49: View to west at Ch. 8+250

Ch. 8+300 – 9+400 comprises of a mixture of well-drained and managed pasture and tillage agricultural undulating terrain and is considered to be of archaeological potential (Ref. F-3-12) (central point ITM 628488,904742). From Ch. 8+300 to Ch. 8+780 lands are comprised of steep, southwest-sloping well-drained pasture bounded to the southwest by the existing N14 road carriageway (**Plate S3-50**). There are buildings, as indicated on the 1st (c. 1840) and 2nd (1905) ed OS and located just inside the assessment area northeast of Ch. 8+550 at ITM 628608, 904825 with a laneway to northwest accessing site.

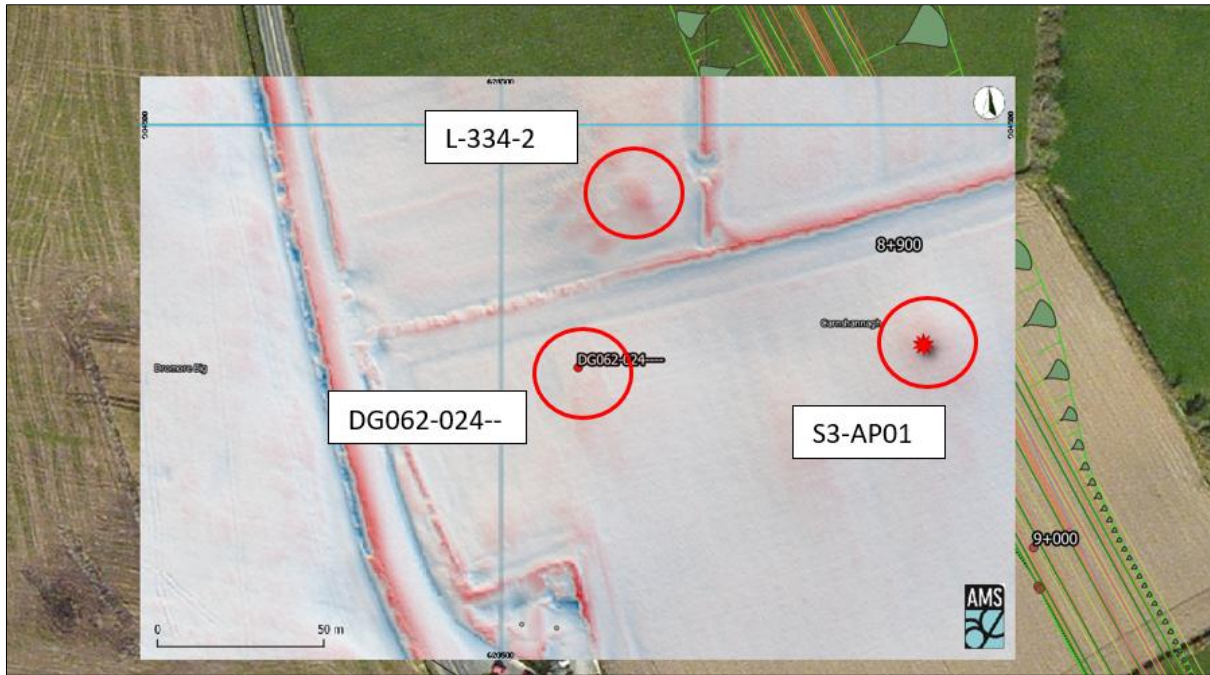


Plate S3-50: View to northwest at Ch. 8+700

Between Ch. 8+800 to 9+000 three potential archaeological features and one recorded enclosure site (DG062-024---) are noted. These comprise of S3-AP01 and LiDAR feature (L-334-2) located on undulating, well-drained tillage and S3-AP02 located southwest of Ch. 8+950 beyond the assessment area, along the base/lower slopes of a large south/southeast sloping ridge which is bounded at the south by a stream which forms the townland boundary of Dromore Big and Dromore Little.

S3-AP01 consists of an AP site at Ch. 8+900 (ITM 628627, 904434) which could represent the corrected location of recorded enclosure (DG062-024---) (ITM 628523, 904427) (**Plate S3-51**) or a possible new enclosure site. A level platform was identified at the break of slope, on well-drained, steep west to southwest sloping pasture bounded by the N14 to the west and southwest and appears to be a favourable position for an enclosure site. LiDAR anomaly L-334-2 is described as a possible barrow, c. 55m northeast of recorded location of DG062-024---. This was inspected during field survey and deemed to be representative of rock outcropping and is not considered archaeological in nature. A drystone wall and natural rock outcrop (**Plate S3-52**) and (**Plate S3-53**) were also identified within the adjoining field to the northeast, at Ch. 8+800.

There is no visible surface trace of enclosure (DG062-024---) per its recorded RMP location (Plate 140254). It is noted that subsequent to field survey walkover inspections, this area at Carnshannagh was subject to licenced archaeological geophysical survey and testing (Sept 2020) which concluded that all three features DG062-024---, S3-AP01 and L-334-2 were non-archaeological in nature. However a small area of prehistoric activity was noted at Ch. 9+000 (ITM 628685, 904372) (Ref. TA3-Carnshannagh) (see AMS Ltd. (Jan 2021) Stage (i): TEN-T Priority Route Improvement: TA3 Carnshannagh Stage (i)a Test Excavation and Stage (i)h Metal Detection Survey Report).



LiDAR DTM and Location of S3-AAP01, L-334-2 and DG062-024--- at Carnshannagh, Ch. 8+900



Plate S3-51: View to southwest from LiDAR anomaly L-334-2 at Ch. 8+900 towards location of (DG062-024---) in adjacent field (mid-right corner of central field)



Plate S3-52: View to northeast of rock outcrop at Ch. 8+800



Plate S3-53: View to east of drystone wall at Ch. 8+800

Ch. 9+000 – 11+600

Ch. 9+000 – Ch. 9+400 consists of well-drained, undulating pasture which becomes wetter towards the southeast and the location of a stream/river which also forms the townland boundary of Carnshannagh/Drumbeg (**Plate S3-54**) and (**Plate S3-55**) as well as the site of a mill pond and former flax mill (ITM 628866, 904029). A ruined single-storey former cottage/building (Ref. F-3-13) is located at Ch. 9+400 (ITM 628866, 904004) at the former flax mill complex (**Plate S3-56**) whilst a road over river single arch masonry bridge (Ref. F-3-14) is located west of Ch. 9+300 at ITM 628737, 904066, representing a former road carriageway, indicated on the 1st ed and 2nd ed OS, which has been realigned on the N14 at this location (**Plate S3-57**).

There is a recorded vernacular cottage along the N14 southwest of Ch. 9+250 (NIAH 40906262) (ITM 628673, 904128) which is in a derelict state with another derelict cottage and outbuildings complex to the northwest of same (**Plate S3-58**). The former Annie Tourish's pub, (RPS/NIAH 40906203) a former thatched cottage, located at White Cross-Roads ITM 628768, 903986 southwest of Ch. 9+450 has been entirely removed (above ground) (**Plate S3-59**).



Plate S3-54: View to southwest at Ch. 9+300



Plate S3-55: View to northwest and former mill pond/flax mill at Ch. 9+400



Plate S3-56: View to northwest of vernacular cottage at Ch. 9+400



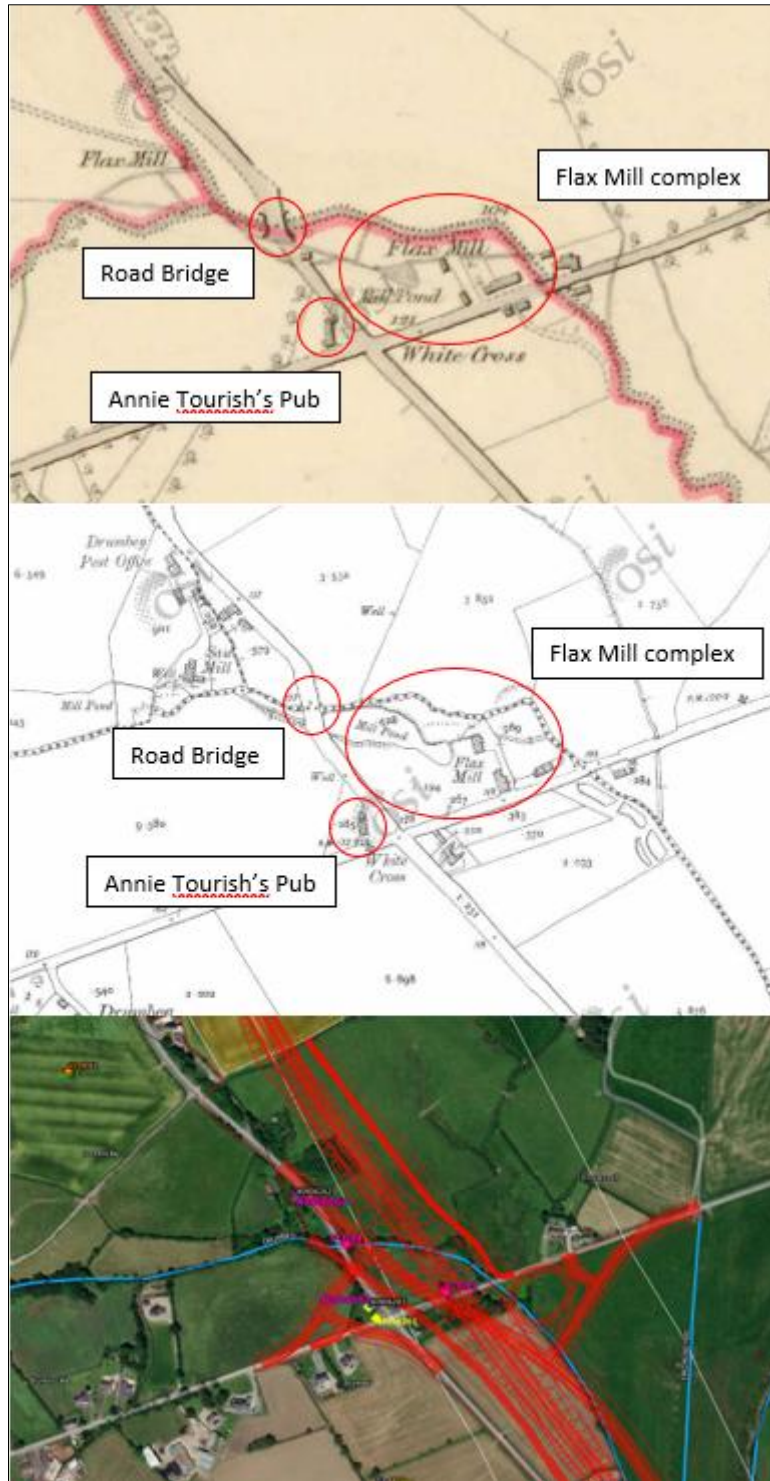
Plate S3-57: View to west of road bridge at Ch. 9+380



Plate S3-58: View to southwest of part of ruined vernacular complex along N14 (to northwest of cottage NIAH 40906262) southwest of Ch. 9+250



Plate S3-59: View to northwest of former location of Annie Tourish's Pub (RPS/NIAH 40906203) at southwest of Ch. 9+450



1st ed OS (c. 1840) (top), 2nd ed OS (1905) (middle) and Bing Satellite (bottom) of cultural heritage features Ch. 9+200 – Ch. 9+450

In general, the proposed alignment from Ch. 9+500 – Ch. 10+600 is comprised of a combination of undulating, and flat, rough and improved pasture (**Plate S3-60**) and forms part of S3-AAP-03. The areas between Ch. 9+500 – Ch. 10+300 are all bounded by a river to the northeast, which also forms part of the townland boundary of Drumbeg/Carnshannagh and Drumfad/Carnshannagh/Feddyglass, and Tullyrap/Feddyglass and are considered areas of fair archaeological potential (**Plate S3-61**) and (**Plate S3-62**). The area between Ch. 10+400 – Ch. 10+600 is comprised of a tillage field (**Plate S3-63**) which slopes north-eastwards to the river/townland boundary which is occupied by mature trees and heavy vegetation and is

also the location of a former Mill Pond (L-338-1) and mill race (L-338-2) (1st and 2nd ed OS) (ITM 629372, 903158 and ITM 629373, 903199) at Ch. 10+400 – Ch. 10+450. The latter mill features were not discernible due to heavy vegetation and crop growth during survey. A large boulder set on edge atop a loose stone boulder wall, had notable 'wear' pattern, possibly due to plough action, suggesting that it had been previously removed as field clearance and set at the boulder walling (ITM 629353, 903147) (**Plate S3-64**) and (**Plate S3-65**).



Plate S3-60: View to southeast at Ch. 9+600



Plate S3-61: View to south at Ch. 10+200



Plate S3-62: View to northeast of river at Ch. 10+200



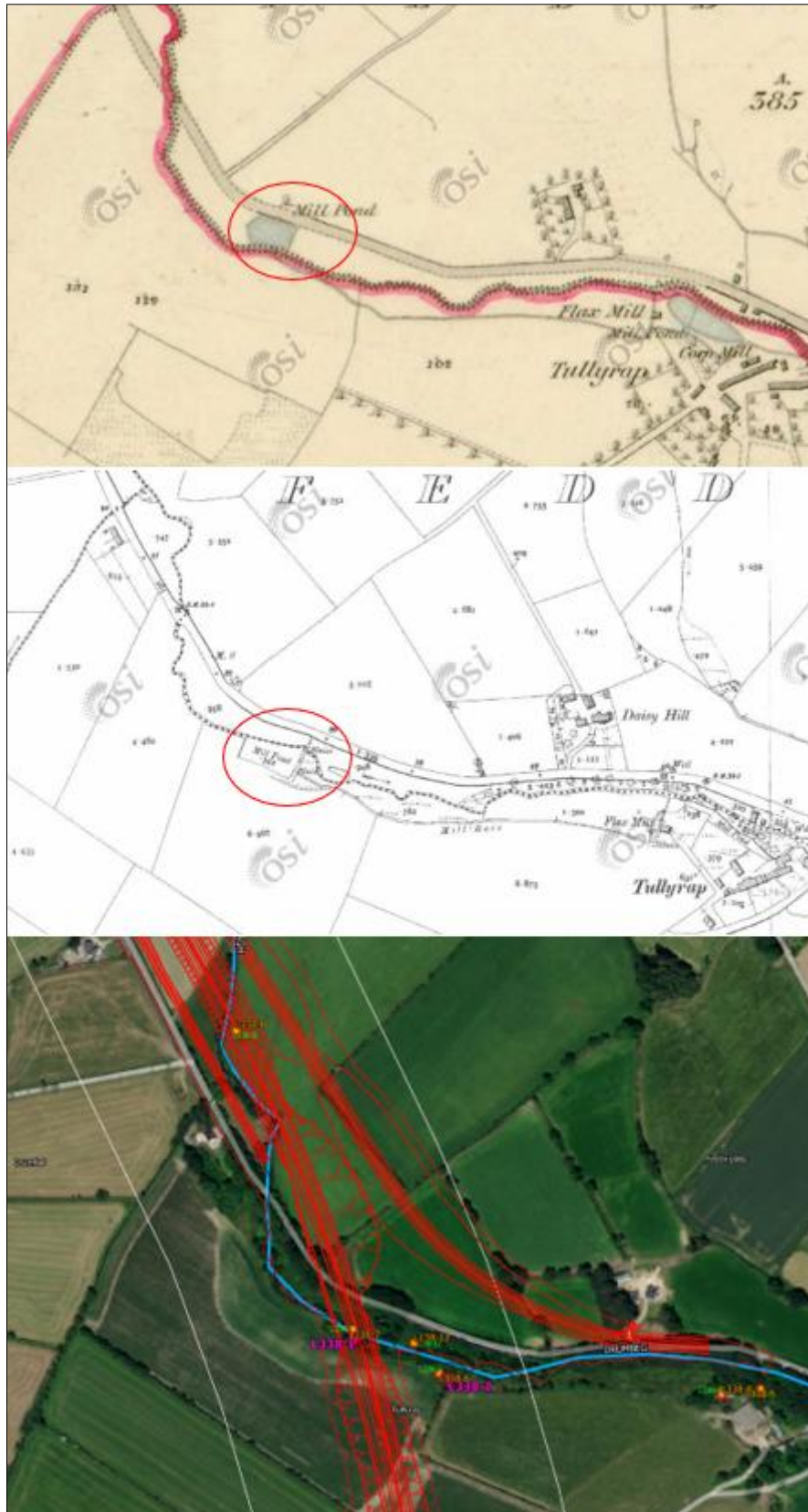
Plate S3-63: View to northeast towards mature trees and river at Ch. 10+500



Plate S3-64: View to southwest of large boulder at Ch. 10+500 Tullyrap mill pond and mill race location



Plate S3-65: View of possible plough markings on large boulder at Ch. 10+500 mill Pond and mill race location, Tullyrap



1st ed OS (c. 1840) (top), 2nd ed OS (1905) (middle) and Bing Satellite (bottom) of mill pond and mill race at Ch. 10+450 forming part of Tullyrap flax mill further to the east

Areas from Ch. 10+700 to Ch. 11+500 is comprised of gently undulating/level improved (drained) pasture and tillage (**Plate S3-66**) and (**Plate S3-67**) that gently falls to the Swilly Burn at Ch. 11+500. Deep drainage ditches are noted throughout with uniform enclosed field layout. Between Ch. 11+300 and Ch. 11+500 is a pocket of commercial forestry and a field of rough, wet pasture of high with the Swilly Burn forming its southern boundary (ITM 629440, 902155) (**Plate S3-68**) and (**Plate S3-69**). This overall area is considered to be of archaeological potential (forming part of S3-AAP03), given the soil quality and proximity to the river, which also forms the townland boundary of Broadlea/Mulnaveagh and Mass Beg.



Plate S3-66: View to south at Ch. 10+700



Plate S3-67: View to south at Ch. 11+200



Plate S3-68: View to south at Ch. 11+300



Plate S3-69: View to south at Ch. 11+600

Ch. 11+600 – Ch. 14+700

From Ch. 11+600 – Ch. 12+200 is comprised of level and improved, drained pasture. The proposed alignment traverses a portion of commercial forestry at Ch. 11+600 – Ch. 12+000. Streams extend along both east and west boundaries at Ch. 12+000 to Ch. 12+200, which form the townland boundary Sheercloon/Gortin North and Sheercloon/Mass Beg respectively (**Plate S3-70**).

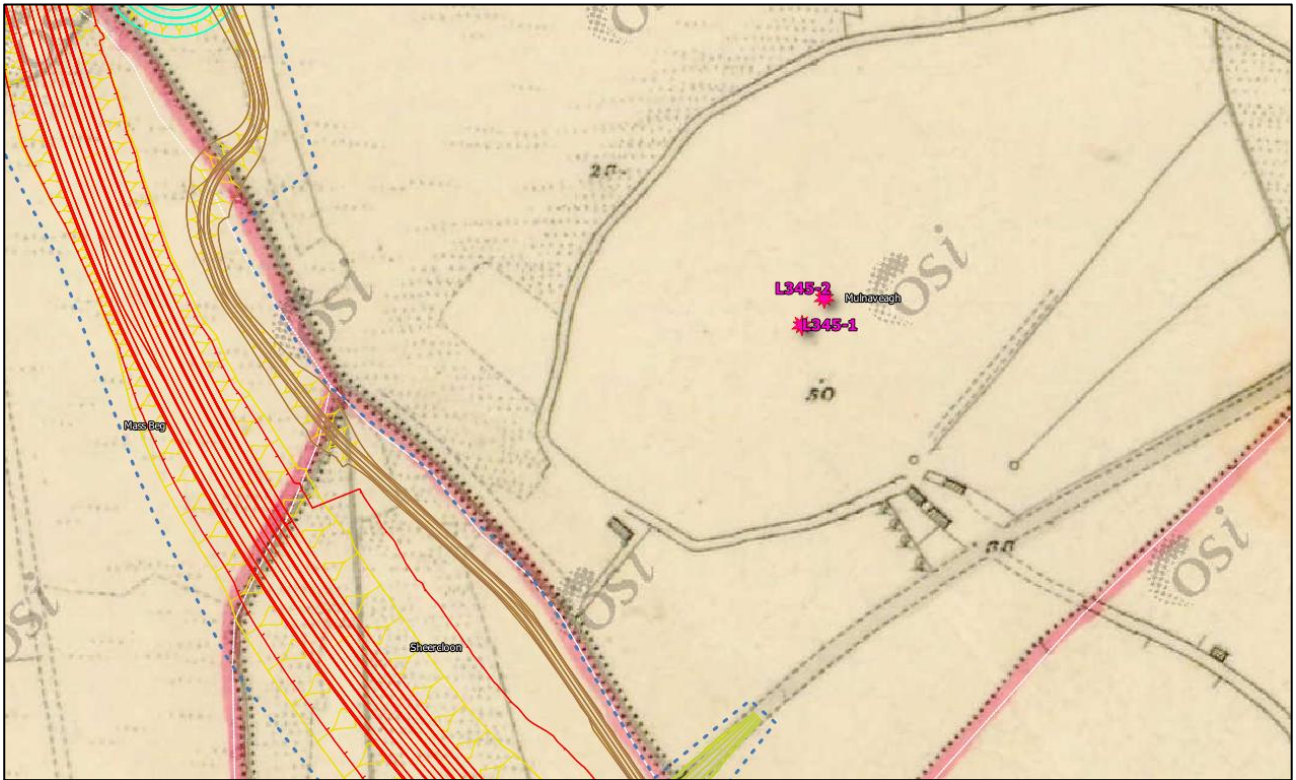


Plate S3-70: View to northwest at Ch. 12+200

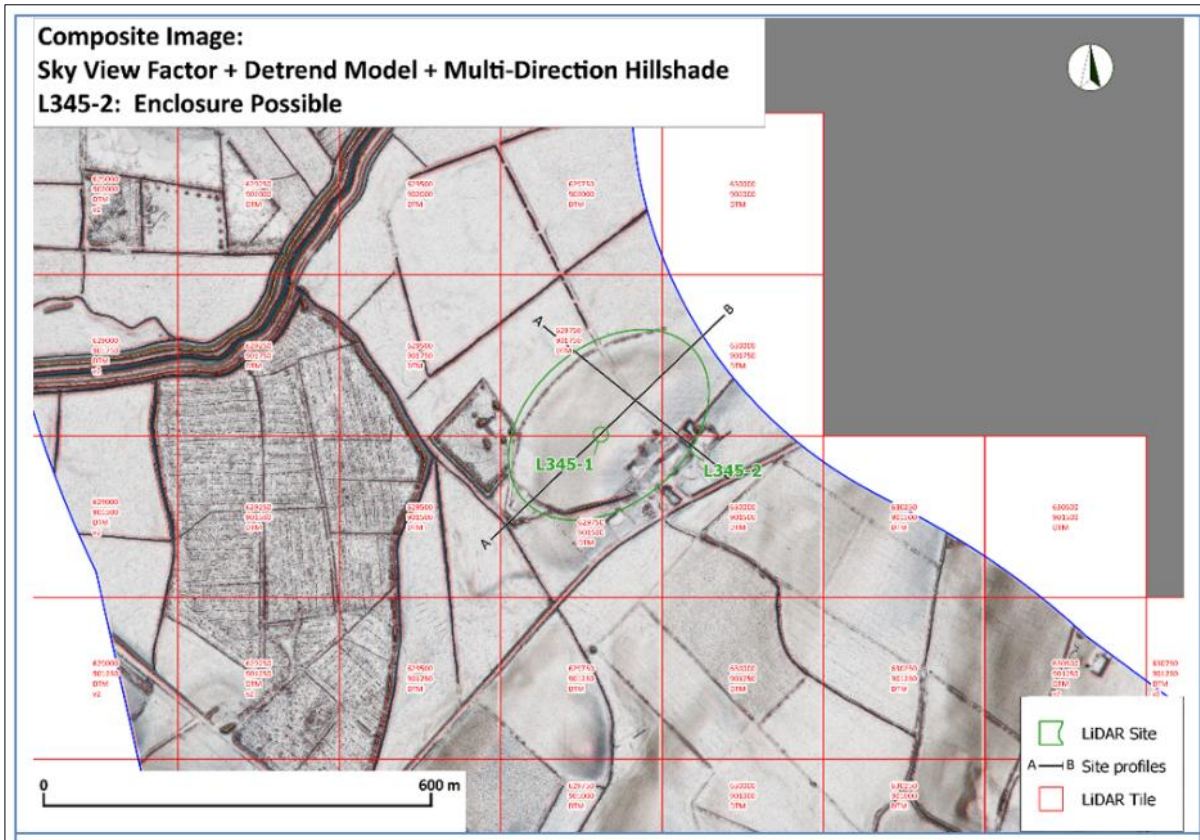
LiDAR anomaly L345-2, a possible enclosure, was identified northeast of Ch. 12+100 (ITM 629917, 901767) as a large curving field boundary, as well as a possible barrow L345-1 (ITM 629905, 901752). The area is represented by a natural elevated platform, occupied by a farmstead, with gradual sloping ground which reaches a curving field boundary at the northern portion comprising mature trees and vegetation (**Plate S3-71**), and which is indicated as a former laneway on the 1st and 2nd ed OS mapping.



Plate S3-71: View to NW, northeast of Ch. 12+100

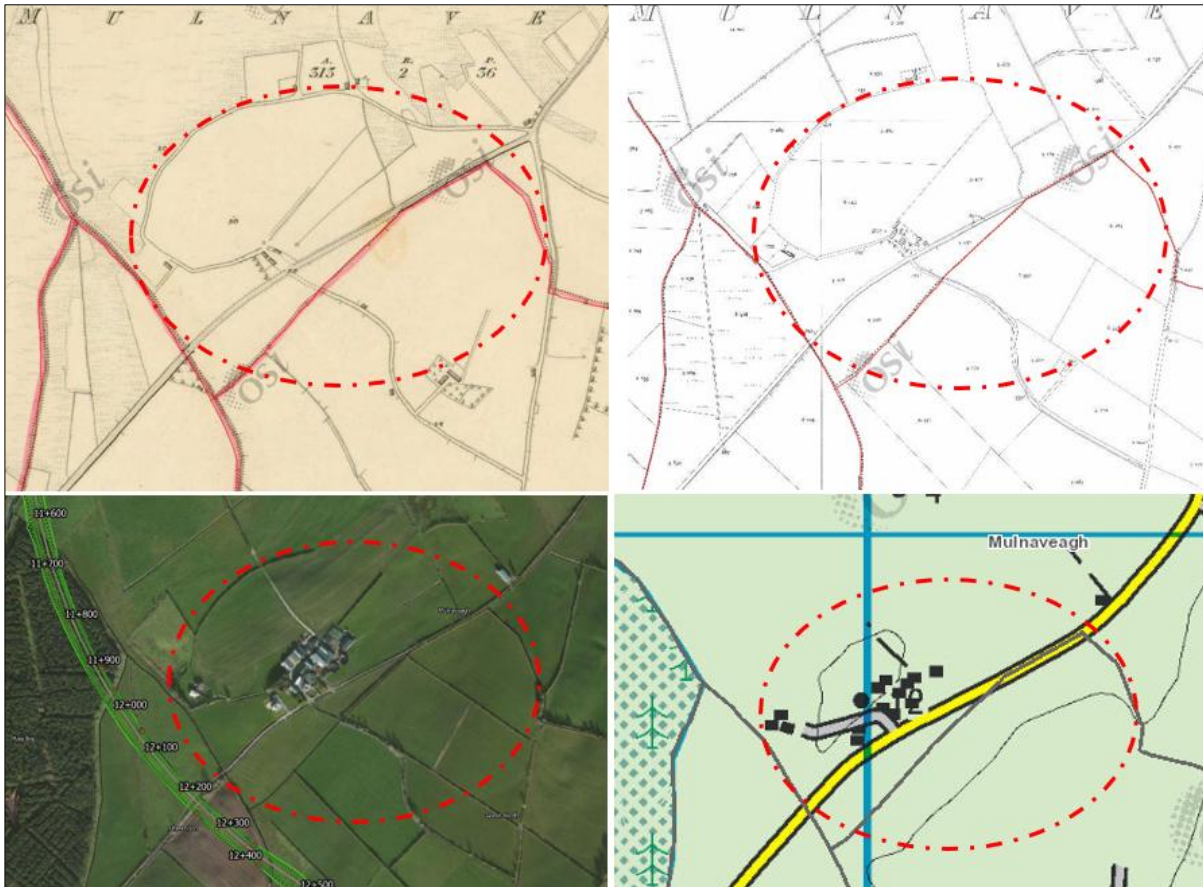


1st ed OS (c.1840) (top) and aerial satellite (bottom) showing curving field boundary/laneway LiDAR anomaly L345-2



Extract from AMS Ltd LiDAR Assessment (**Appendix 2**, p.160) of L345-1 and L-345-2 showing curving oval enclosing element that boundary may represent

It is also noted that the existing farmstead at this location is placed on the highest point, atop a broad platform. The remaining extant curving laneway/boundary to the north originally extended further east, whilst the townland boundary of Gortin North and Mullnaveagh also retains a curved element, which may potentially link with the laneway to form a large (approx. 700m diameter) broadly oval enclosed area, also linking with the townland boundary of Sheerclon/Gortin North to the west, with a central settlement focus that could have potential earlier origins. The latter townland boundary extends east of Ch. 12+000 – Ch. 12+200 and alongside a local access to attenuation pond at Ch. 0+100 (ITM 629747, 901618).



1st ed OS (c.1840) (top left); 2nd ed OS (top right); Bing satellite (bottom left) and OS Discovery Series (bottom right) showing potential large oval enclosed area linked with LiDAR anomaly L345-2

Between Ch. 12+300 – Ch. 13+100, the topography consists of undulating, well-drained pasture (**Plate S3-72**). Southwest of Ch. 13+100 just outside the assessment area, a LiDAR anomaly L349-2 identified 'buildings' accessed by a laneway, and which is the remains, in part, of 'Gortin' farmstead and the ruins of a former two-story farm building at ITM 630267, 900809 (**Plate S3-73**).



Plate S3-72: View to northwest of Ch. 12+800



Plate S3-73: View to southwest of Ch. 13+100 and buildings at 'Gortin' farmstead

Northeast of Ch. 13+100 - Ch. 13+200 are the recorded locations of two standing stone sites, both of which have been removed (DG070-032----) and (DG070-033----) and confirmed via field inspection (**Plate S3-74**). This area forms part of an area of archaeological potential S3-AAP04 (central ITM 630488, 900843).



Plate S3-74: View towards south of recorded locations of sites of standing stones DG070-032---- & DG070-033----, northeast of Ch. 13+100

Ch. 13+200 – Ch. 14+100 consists of the south-eastern slopes of high drumlin terrain (65m OD at Moneen) which is of good quality soils, well drained and falling toward the River Deelee to the south. The proposed alignment crosses the townland boundary of Gortin North/Tamnawood (Ch. 13+300) Tamnawood/Ballindrait (Ch. 13+650) and Ballindrait/Cavanacor (Ch. 14+000) (**Plate S3-75**). This area is considered to be of good archaeological potential and forms part of S3-AAP04.

The birthplace of Rev. James Porter (Ref. M698) at Tamnawood (ITM 630462, 900558) at Ch. 00 of a proposed access road, is commemorated by a plaque attached to the gable wall of a modified cottage, within a yard containing vernacular stone outbuildings (**Plates S3-76 – S3-78**).

The historic garden demesne of Cavanacor House (RPS 40907026, NIAH 40834001 and NIAH DG0028) in part, is located within the proposed alignment area from Ch. 13+900 to the River Deelee crossing at Ch. 14+500 and consists of good quality pasture that slopes to the south towards the floodplain of the River Deelee (**Plate S3-79**) (ITM 631321, 900238 indicative centre-point).



Plate S3-75: View to southeast of Ch. 13+600



Plate S3-76: Birthplace of Rev. James Porter, Tamnawood (M698) with attached plaque on gable, facing northeast



Plate S3-77: Rev. James Porter commemorative plaque on gable of house M698 at Tamnawood

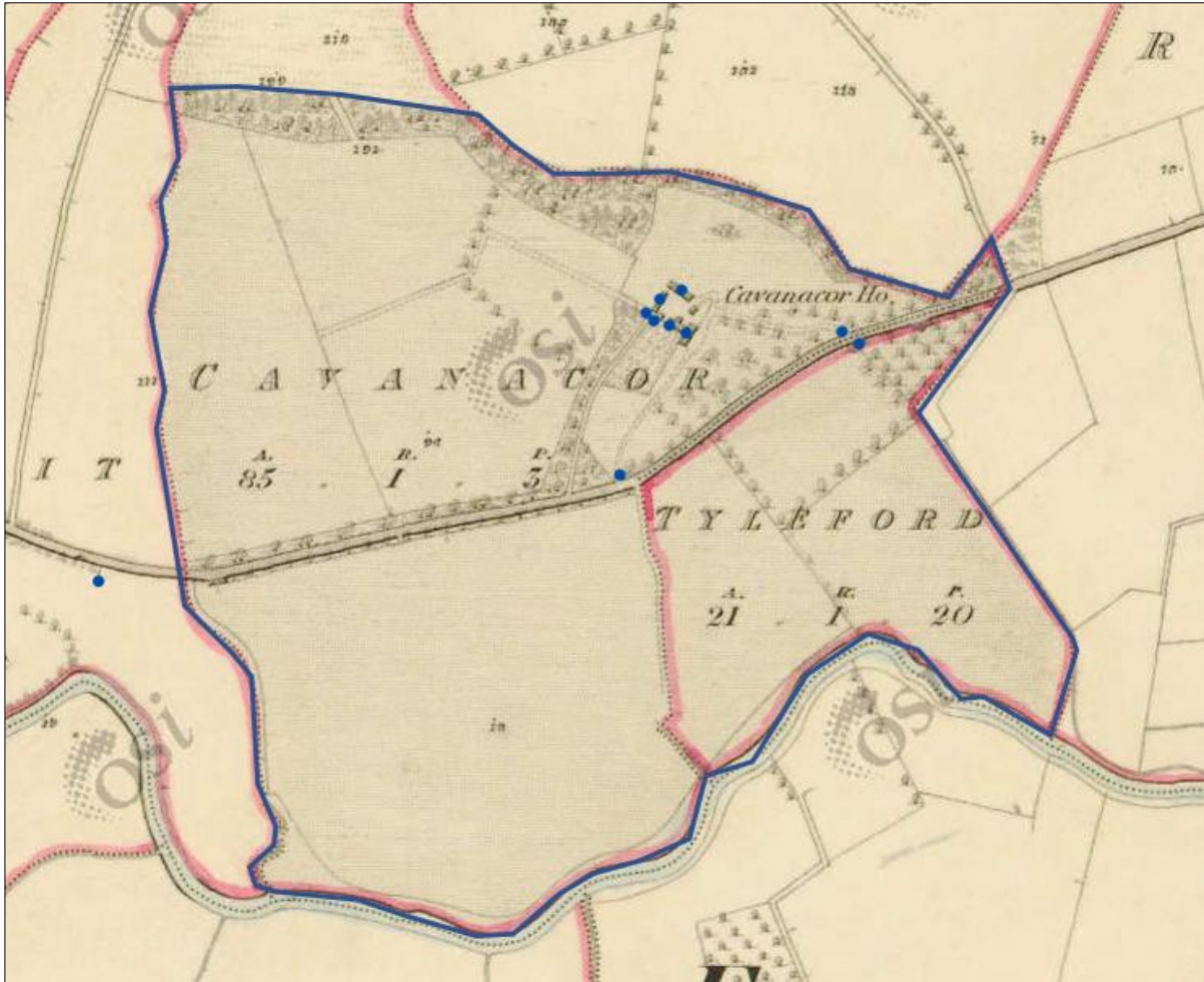


Plate S3-78: Vernacular stone outbuildings, M698 Tamnawood, facing southwest



Plate S3-79: View to southeast of Ch. 14+000

Cavanacor House (**Plates S3-80-S3-85**) is located east/northeast of Ch. 14+100, outside the assessment area, and both the house and immediate attendant grounds are surrounded and enclosed by a mature tree-line. There is a (disused) western entrance gate and an eastern entrance gate accessing the house from the local road network at the south (east/northeast of Ch. 14+100). The east gate (ITM 631454, 900239) has random rubble-built masonry walling and square gate piers with replacement pyramidal coping, whilst to the west the gates have a similar form, although with cast iron gate posts and the walling appears to have been rebuilt with modern blocks in recent years (ITM 631262, 900116). There is a derelict gate-lodge on the roadside, opposite the east gate (ITM 631468, 900227).



Cavanacor demesne layout per 1st ed OS mapping (c. 1830)



Plate S3-80: View to northwest of Cavanacor House east gate entrance



Plate S3-81: View to north of Cavanacor House west gate entrance



Plate S3-82: View to south along walled garden perimeter and laneway at western boundary edge to Cavanacor House



Plate S3-83: View to northeast across walled garden to rear of Cavanacor House and outbuildings



Plate S3-84: View to southeast from Cavanacor house and fording point on river Deelee at Tyleford (beyond treeline)



Plate S3-85: View from front elevation of Cavanacor House towards south and proposed development area

There is a number of built railway structures associated with the Strabane and Letterkenny Railway line (opened 1909), located along the local road network and adjacent the former railway line, west of Ch.

14+100. These include a station master's house and ancillary railway structure (NIAH 40834011) (ITM 623693, 910767 and ITM 630267, 900809), and a goods shed (NIAH 40834017) (ITM630816, 900024) (Plate S3-86, Plate S3-87 and Plate S3-88).



Plate S3-86: View to southeast of Station Masters House (NIAH 40834011) Ch. 14+100



Plate S3-87: View to southwest of ancillary railway structure (NIAH 40834011) Ch. 14+100



Plate S3-88: View to southwest of Goods Shed (NIAH 40834017) Ch. 14+100

Ch. 14+100 – Ch. 14+700 consists of gently sloping improved pasture with drainage throughout that reaches the banks and floodplains on either side of the River Deele (Ch. 14+400). This is considered an area of archaeological potential and forms part of S3-AAP04 (**Plate S3-89** and **Plate S3-90**).

The former Strabane & Letterkenny Railway Line embankment traverses the alignment at Ch. 14+200 (ITM 630993, 899946) at Cavancor, near the north banks of the River Deele.



Plate S3-89: View to southwest of Ch. 14+200 & Ch. 14+300



Plate S3-90: View to southwest of Ch. 14+500 to Ch. 14+800

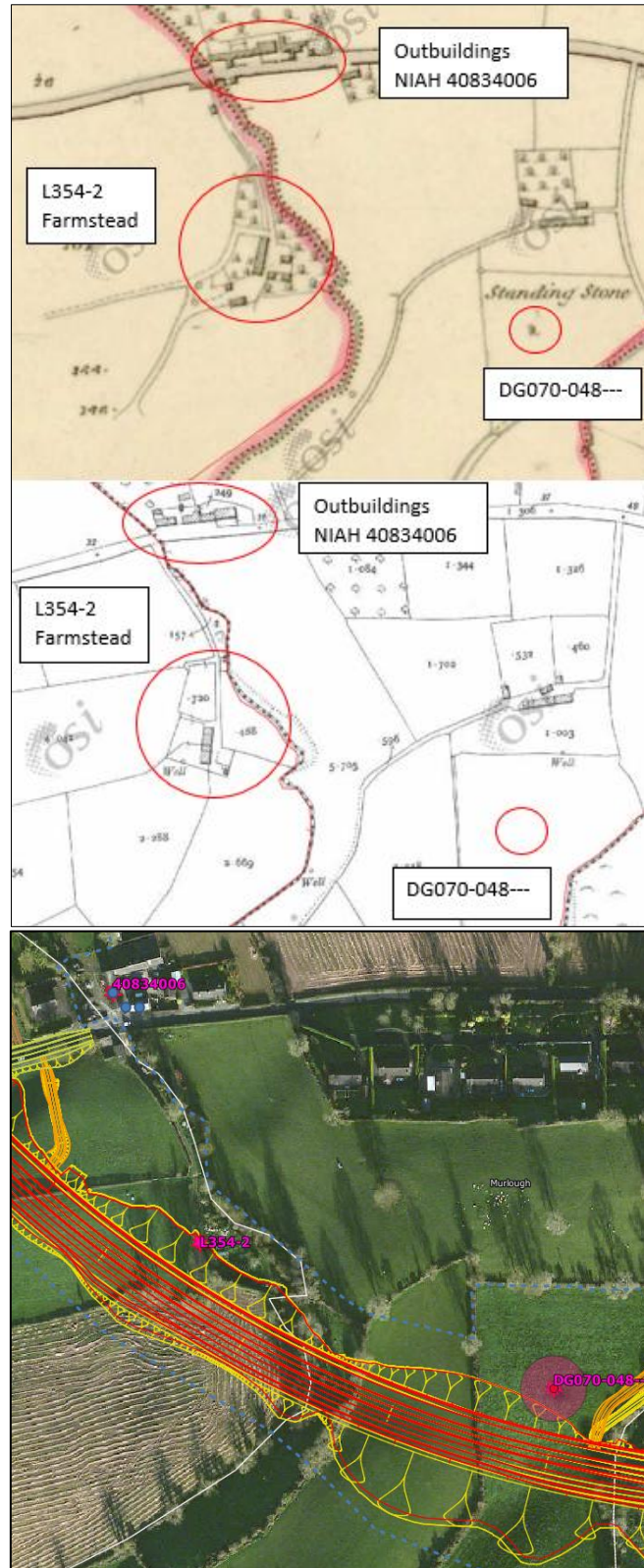
Ch. 14+700 – Ch. 17+638

East of Ch. 14+700, fronting the local road network, at Murlough is a farmstead with an NIAH recorded two-storey outbuildings (NIAH 40834006) (ITM 631362, 899576) (**Plate S3-91**). The farmstead is indicated on both the 1st ed and 2nd ed OS mapping.



Plate S3-91: View to northeast of outbuildings NIAH 40834006 at Murlough, Ch. 14+700

Between Ch. 14+700 to Ch. 15+200 is undulating good quality drumlin terrain, with a stream which forms the townland boundary of Ballynabreen and Murlough located northeast of the proposed alignment at Ch. 14+700 – Ch. 15+000. LiDAR anomaly L354-2 located at Ch. 14+850 (ITM 631415, 899424) a 'farmstead', was inspected and very partial remains a portion of elevation walling, and a vernacular rubble-built circular plan field entrance gate pier was noted at this location (**Plate S3-92**) and (**Plate S3-93**). The farmstead is indicated on the 1st and 2nd ed OS mapping.



1st ed OS (c.1840) (top), 2nd ed OS (1905) (middle) and satellite (bottom) showing L-354-2, NIAH 40834006 and DG070-048---



Plate S3-92: View to south at Ch. 14+850, farmstead walling field gate pier (L354-2)



Plate S3-93: View to north at Ch. 14+850, ruined farmstead location (L354-2)

North of Ch.15+100 is the site of a standing stone (DG070-048---) (ITM 631630, 899335) whilst two other recorded 'sites of' standing stones (removed) are located to the south of Ch. 15+100 (DG070-049--- and DG070-050---) (ITM 631595, 899154 and 631562, 899098) (**Plate S3-94**, **Plate S3-95** and **Plate S3-96**). A windmill, 'Snodgrass Windmill' is located within a farm complex to the south of Ch.15+100 (NIAH 40834005) (ITM 631550, 899064) (**Plate S3-97**). This overall area, and in particular the portion of the proposed

alignment between Ch. 15+000 and Ch. 15+200, is considered an area of archaeological potential and forms part of S3-AAP05.



Plate S3-94: View to north of Ch. 14+800



Plate S3-95: View to west at Ch. 14+950, at stream and boundary Ballynabreen/Murlough



Plate S3-96: View to north of Ch. 15+150, and site of Standing Stone (DG070-048----) (removed)



Plate S3-97: View to southwest of windmill (NIAH 40834005), south of Ch. 15+150

North of Ch. 15+200, and on the northern side of the sloping ground at this location, St Patrick's Church (RPS 40907020/NIAH 40834003), designed by architect Liam McCormick, is located along the local road network (ITM 631966, 899459). Ballindrait Presbyterian Manse house (NIAH 40834002) (ITM 631819, 899516) is also located adjacent the church site, further west along the local roadway. There are no views afforded from the church site and its graveyard towards the proposed alignment.

The areas between Ch. 15+200 and Ch. 15+700 were not inspected due to crop growth at the time of survey (**Plate S3-98**) although the undulating well drained soils are considered an area of archaeological potential, forming part of S3-AAP05.



Plate S3-98: View to north from local roadway at Ch. 15+500

From Ch. 14+700 to Ch. 17+350 the proposed alignment traverses along the lower northern, and eastern slopes (50m-70m OD) of Croaghan Hill (217m OD). The Croaghan Hill landform consists of a broad northeast/southwest extending hill ridge comprising two peaks (217m and 184m OD), with the proposed alignment skirting the north-eastern and easterly extent of the lower hill slopes that gradually falls south-eastwards towards the banks of River Finn. The area consists of well drained soils and managed pasture (**Plate S3-99, Plate S3-100, Plate S3-101 and Plate S3-102**).



Plate S3-99: View to southeast at Ch. 15+700 – 15+900



Plate S3-100: View to southeast at Ch. 16+000 – 16+200



Plate S3-101: View to south at Ch. 16+300



Plate S3-102: View to north at Ch. 16+700 – 16+500

East of Ch. 16+350 – Ch. 16+550 there are 4 no. recorded standing stone sites: DG071-005--- (ITM 632525, 898541), DG071-007--- (ITM 632656, 898508), DG071-006--- (ITM 632681, 898552) and DG071-009--- (ITM 632932, 898360). All of these standing stones have been removed (**Plate S3-103**).



Plate S3-103: View to east of (DG071-006---) & (DG071-007---), E of Ch. 16+300

Ch. 16+700 – Ch. 17+100 consists of undulating parkland, in use as pasture, and forming part of the attendant grounds to the front (southeast) of Croghan House (NIAH 40835028 and Historic Garden DG0040) (**Plate S3-104** and **Plate S3-105**) (ITM 632472, 898002 indicative centre-point). The house is accessed via a straight southeast/northwest extending avenue from the east (with a former gate-lodge per the 2nd ed OS mapping) which then turns sharply to the southwest (Ch. 16+800). Demesne stone walling forms the townland boundary of Townparks/Carricknaslate at Ch. 16+700 with a former well (M739) also located in this area (**Plate S3-106** and **S3-107**).



2nd edition OS mapping (1905) (top) and Bing satellite (bottom) showing Croghan House location historic demesne grounds



Plate S3-104: View to south of Croaghan House demesne parkland and proposed main alignment Ch. 16+800 – Ch. 17+100



Plate S3-105: View to southwest of access avenue (crossing point on proposed main alignment) and Croaghan House



Plate S3-106: View to south of demesne walling (Croaghan House) forming townland boundary
Townparks/Carricknaslate at Ch. 16+650



Plate S3-107: View of former well M739 along demesne boundary at Croghan House at Ch. 16+650

Ch. 17+100 – 17+400 consists of level, well-drained pasture at the foot of the south-eastern slopes of the Croaghan Hill ridge, bounded by the existing N15 to the south of Ch. 17+350 (**Plate S3-108**).



Plate S3-108: View to south of Ch. 17+100 – 17+300

At the southern side of the N15 from Ch. 17+400 to Ch. 17+638 the topography drops gently southwards to the banks of the River Finn and consists of improved pasture which gives way to wet marshland along the riverbanks. There is a recorded souterrain site DG070-082--- (ITM 632263, 897208) west of the southern terminus point (Ch. 17+638) within a tillage field (under crop at the time of survey) (**Plate S3-109, Plate S3-110** and **Plate S3-111**). Archaeological testing at this area also revealed an enclosing ditch/bank element outside the souterrain site (ITM 632241, 897219, TA5 Curraghane 1) as well as some prehistoric activity to the south (ITM 632308,897149) (TA5 Curraghane 2).



Plate S3-109: View to south of Ch. 17+400

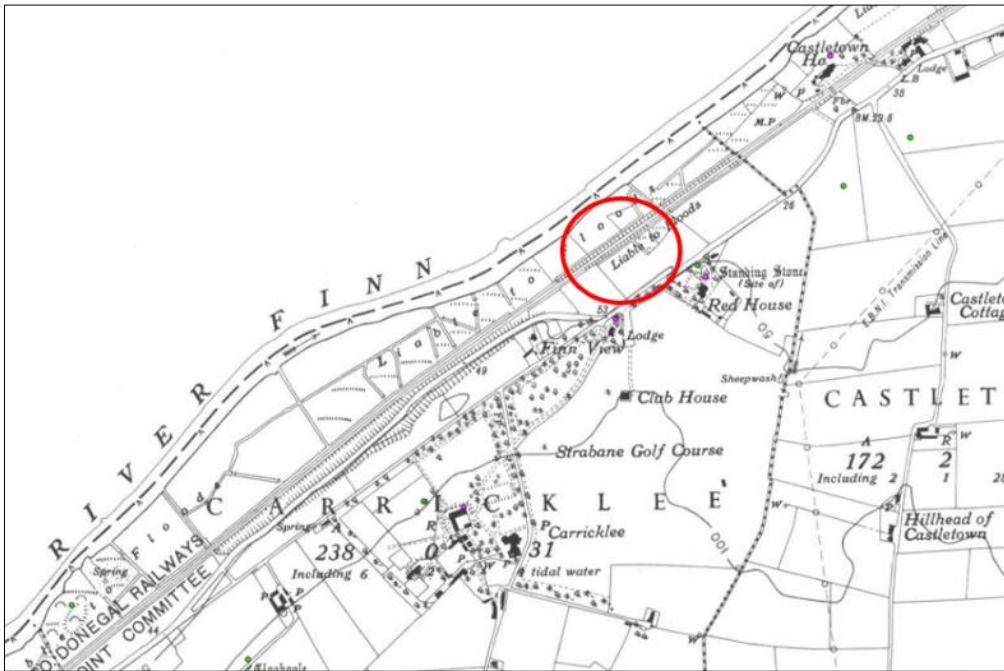
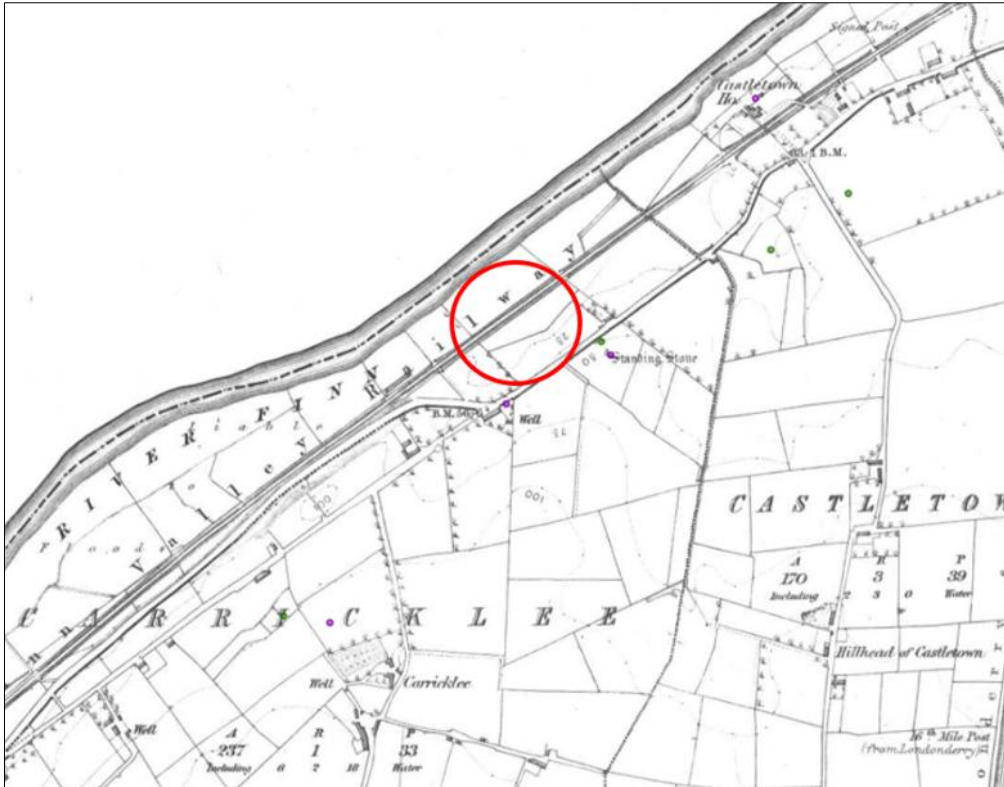


Plate S3-110: View to south of Ch. 17+500 – Ch. 17+638

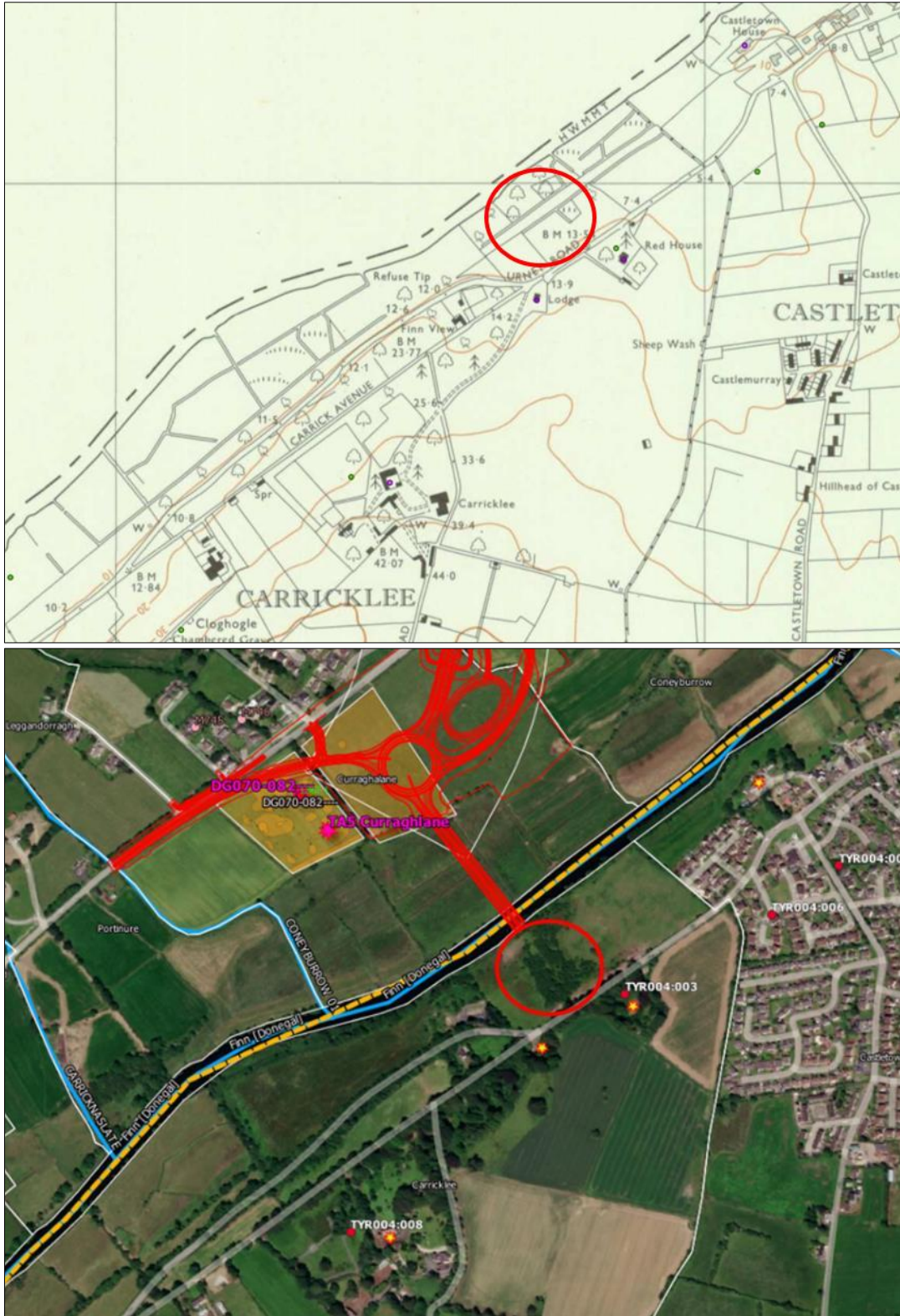


Plate S3-111: View to south and recorded location of souterrain DG070-082----

Lands opposite the A5 Link tie-in on the south side (Northern Ireland) of the River Finn consists of low-lying improved pasture, with areas of dense vegetation, which reach the banks of the River Finn (**Plates S3-112, S3-115 - S3-117**). The A5 bridging point on the Lifford side of the river similarly consists of low-lying improved ground although rough grazing pasture is noted near the riverbanks (**Plate S3-113 and S3-114**). Lands immediately west of the tie-in location on the southern (Northern Ireland) banks are host to a former refuse dump, (closed 2014) and managed by Derry City & Strabane District Council. The former railway line (*Finn Valley Railway*, opened 1863) traversed through these lands but has been removed. In 1892 the railway company merged with *West Donegal Railway* into the *Donegal Railway Company* and the line from Stranorlar to Strabane was reconstructed to 3ft gauge shortly afterwards. Steep embankment drop is noticeable along Urney Road to the southeast, where the railway line ran directly parallel/abutting same. Heavy mature tree-growth along Urney Road at this location also screens any views towards the tie-in point to the north-east. Historic OS mapping refers to the lands being liable to flooding and flood embankment are in place along the river edge. It was noted during field survey that historic building HB 10/08/003 Red House and gate lodge have been entirely demolished and the site is now derelict (**Plate S3-118**).



Top: Extract from 2nd ed OS c. 1860 showing Finn Valley Railway and A5 tie-in location
Bottom: Extract from 4th ed OS c. 1905 showing County Donegal Railway and A5 tie-in location



Top: Extract from 1:10000 map (1957-1986) showing refuse site, disused railway and A5 tie-in area
Bottom: Aerial showing A5 Bridging Link location and lands to south of River Finn (Northern Ireland). Note heavy tree growth along Urney Road along former railway line, and scrub to lands at tie-in location

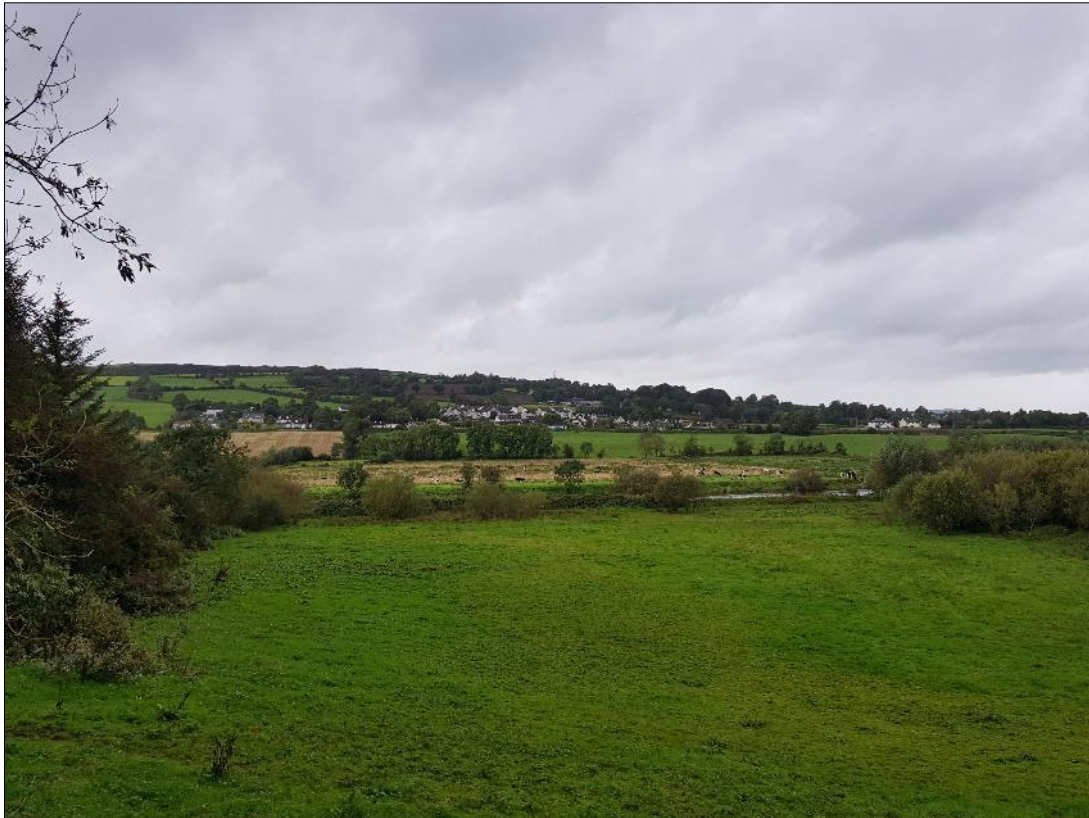


Plate S3-112: View northwest towards A5 Link Tie-In to A5 WTC, along Urney Road and bridging point on River Finn



Plate S3-113: View SE towards Curraghalane souterrain DG070-082--- and side road area and opposite banks of River Finn



Plate S3-114: View S across roundabout junction at Curraghlane and A5 Link and bridging point over River Finn



Plate S3-115: View north to area of scrub and dense vegetation to lands at A5 WTC Tie-in point along Urney Road



Plate S3-116: View to NW from Urney Road (opposite former Red House HB 10/08/003 towards tie-in point and scrub area)



Plate S3-117: View towards northeast along Urney Road towards modern housing development and tree-line (Castletown House HB 10/08/007 lands beyond tree-line). There is reference to views afforded from the house to the lands reaching the river and beyond



Plate S3-118: View towards NW of grassed over rubble remains of demolished Red House HB10/08/003

Croaghan Hill Passage Tomb DG070-074002- and Hillfort DG070-074001-

The hillfort (DG070-074001-) with a passage tomb site within its enclosing bank (DG070-074002-) is located at the summit (217 m OD) of the broad SW-NE extending ridge of Croaghan hill. The site is not apparent on (foot) approach from the south. The land rises northwards and the hillfort is difficult to access, with its interior covered in dense heather and vegetation growth. Evidence of rock outcropping was noted throughout. The passage tomb presents as a conspicuous mound on the highest point of the interior and has a concrete OS trigonometrical station on top (**Plate S3-119**). The tomb has been damaged and robbed out at the west (**Plate S3-120**), at its likely original entrance passage area which overlooks the Kilmonaster passage tomb cemetery c. 2.5 km to the west (**Plate S3-121**). This westerly view is the predominant aspect from the site. The overall site setting (including the hillfort) has been slightly compromised by the presence of commercial forestry to the northeast. However, the broad SW-NE extending shoulder ridge partially obscures views to the lowlands below, including that towards the proposed development boundary at the east/southeast (**Plates S3-122, S3-122 and S3-123**). This, together with overall extensive distance proximity (c. 2.4 km) to the southern terminus area of Section 3 and the A5 Link Road is deemed a Not Significant significance of effect on this site and its heritage landscape setting.



Plate S3-119: View towards west of passage tomb DG070-074002- Croaghan Hill



Plate S3-120: View towards east of robbed probable entrance area of passage tomb DG070-074002- Croaghan Hill



Plate S3-121: View towards west from probable entrance area of passage tomb DG070-074002- Croaghan Hill, overlooking Kilmonaster passage tomb cemetery area



Location of Croaghan Hill passage tomb and hillfort c. 2.4 km west of the proposed development



Photographic viewpoints from Croaghan Hill passage tomb and hillfort towards the proposed development area



Photopoint 1 from passage tomb and hillfort site, Croaghan Hill, towards east/northeast and proposed development area



Photopoint 2 from passage tomb and hillfort site, Croaghan Hill, towards east and proposed development area



Photopoint 3 from passage tomb and hillfort site, Croaghan Hill, towards southeast and proposed development area