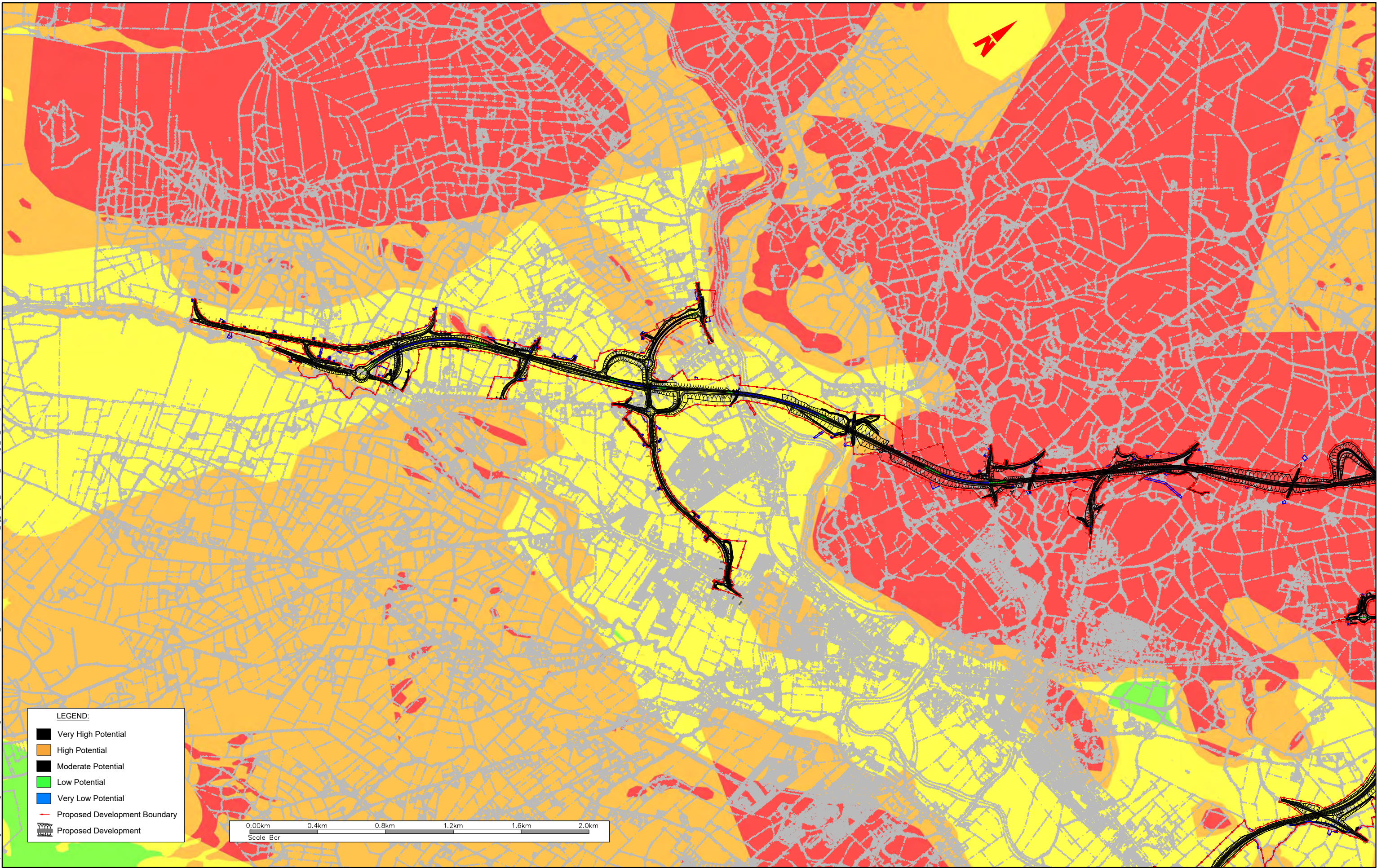


T:\MGT0337 - Ten-T Priority Route Imp - Donegal\Phase 3\EMEIAR Drawings\10.0 Land and Soil Section 1\TT_MGT0337-RPS-P3-S1-DR-Z-EN0302_Aggregate_Potential_Drawings_SC_P04.dwg



LEGEND:

- Very High Potential
- High Potential
- Moderate Potential
- Low Potential
- Very Low Potential
- Proposed Development Boundary
- Proposed Development





TIU
Transport Infrastructure Unit



Co-financed by the Connecting Europe Facility of the European Union



Riádas na hÉireann
Government of Ireland



Tionscadal Éireann
Project Ireland
2040



Donegal
NRU
Oifis Dochoime Thairgine
Dhún na nGall



Comhairle Contae
Dhún na nGall
Donegal County Council

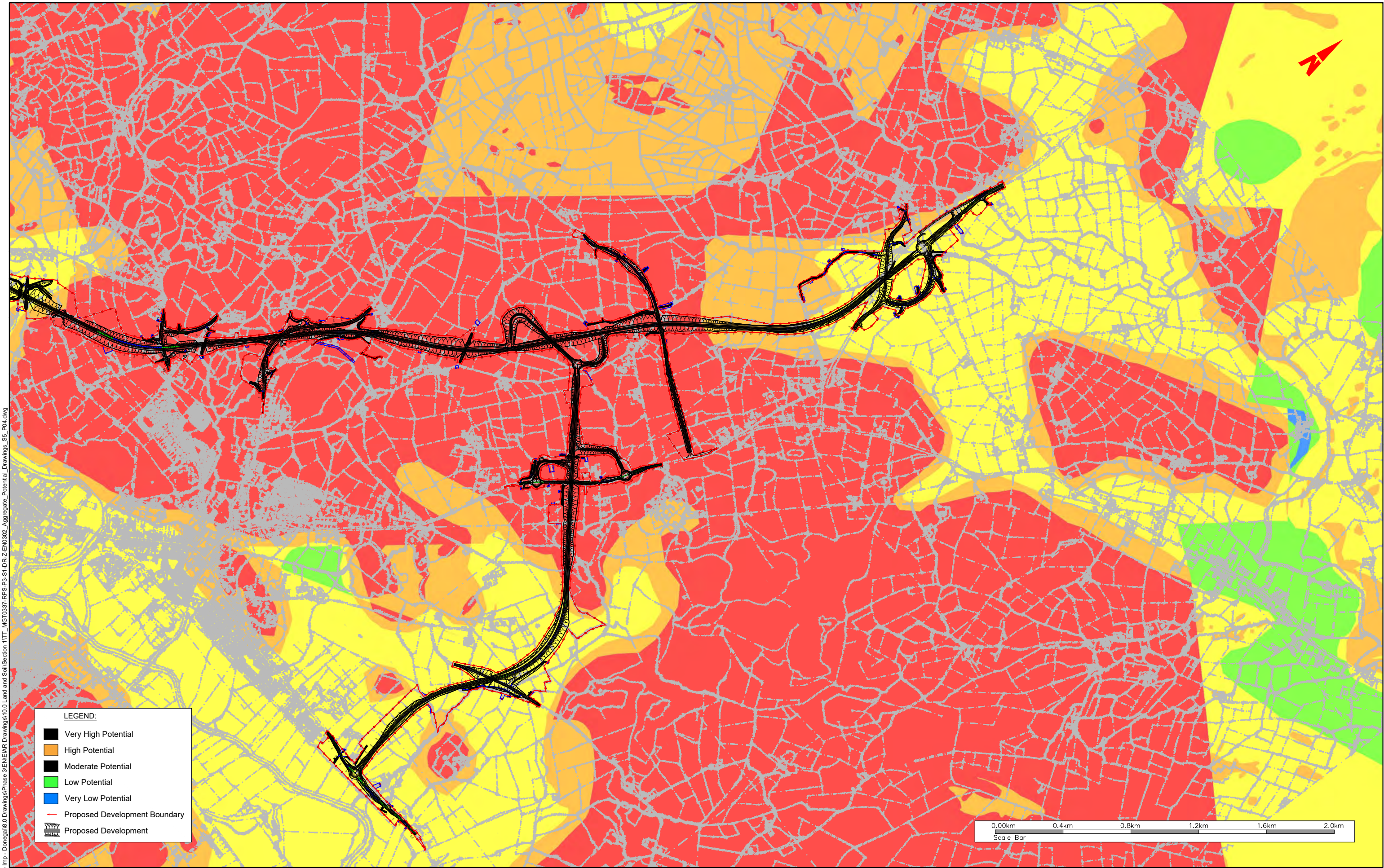


RPS BARRY
TRANSPORTATION

NOTES
DO NOT SCALE, use figured dimensions only.
All levels are referred to Ordnance Survey Datum, Mean Head.
This drawing is the property of the Donegal County Council. It is a confidential document and must not be copied, used, or its contents divulged without prior written consent. This document should not be relied on or used in circumstances other than those for which it was originally prepared. RPS / Barry Transportation accepts no responsibility for this document to any other party other than the party by whom it was commissioned.

Rev.	Date	Drawn	Description	Chk'd	Appr.
P01	18.02.26	BH	Issue for Planning	KC	GMcE

Project Title: TEN-T Priority Route Improvement Project, Donegal Section 1 - N15/N13 Ballybofey / Stranorlar Urban Region		Status: A03
Drawing Title: Section 1 - Aggregate Potential		Rev: P01
Designed: JOC	Date: MAR 2025	EIAR Drawing Identifier: 10.04
Drawn: EG	Scale @ A1: 1:10000	File Identifier: TT_MGT0337-RPS-P3-S1-DR-Z-EN0302
Approved: GMcE	@ A3: 1:20000	Sheet: 01 of 02
Checked: KC		



LEGEND:

- Very High Potential
- High Potential
- Moderate Potential
- Low Potential
- Very Low Potential
- Proposed Development Boundary
- Proposed Development



TT_MGT0337 - Ten-T Priority Route Imp - Donegal/8.0 Drawings/Phase 3/ENIEAR Drawings/10.0 Land and Soil/Section 1/TT_MGT0337-RPS-P3-S1-DR-Z-EN0302 - Aggregate - Potential Drawings - SC_P04.dwg

TIU
Transport Infrastructure Unit

Co-financed by the Connecting Europe Facility of the European Union

Riádas na hÉireann
Government of Ireland

Tionascadal Éireann
Project Ireland
2040

Donegal
NRU
Oifis Dochoime Thairgine
Dhún na nGall

Comhairle Contae
Dhún na nGall
Donegal County Council

NOTES

DO NOT SCALE, use figured dimensions only.

All levels are referred to Ordnance Survey Datum, Mean Head.

This drawing is the property of the Donegal County Council. It is a confidential document and must not be copied, used, or its contents divulged without prior written consent. This document should not be relied on or used in circumstances other than those for which it was originally prepared. RPS / Barry Transportation accepts no responsibility for this document to any other party other than the party by whom it was commissioned.

Rev.	Date	Drawn	Description	Chk'd	Appr.
P01	21.03.26	BH	Issue for Planning	KC	GMcE

Project Title: TEN-T Priority Route Improvement Project, Donegal Section 1 - N15/N13 Ballybofey / Stranorlar Urban Region		Status: A03
Drawing Title: Section 1 - Aggregate Potential		Rev: P01
Designed: JOC	Date: MAR 2025	Scale @ A1: 1:10000
Drawn: EG	Scale @ A3: 1:20000	File Identifier: TT_MGT0337-RPS-P3-S1-DR-Z-EN0302
Approved: GMcE	Sheet: 02 of 02	
Checked: KC		