

Legend

Ten-T Section 3

- PROPOSED ROAD DEVELOPMENT (SECTION 3)
- PROPOSED ROAD DEVELOPMENT (SECTION 2)
- PROPOSED DEVELOPMENT BOUNDARY (SECTION 3)
- PROPOSED DEVELOPMENT BOUNDARY (SECTION 2)

GSI Crushed Rock Aggregate Potential

- Very High potential
- High potential
- Moderate potential
- Low potential
- Very Low potential

GSI Mineral Locations

- Both
- Metallic
- Non-metallic



CVAL 50441196
© Tailte Éireann.

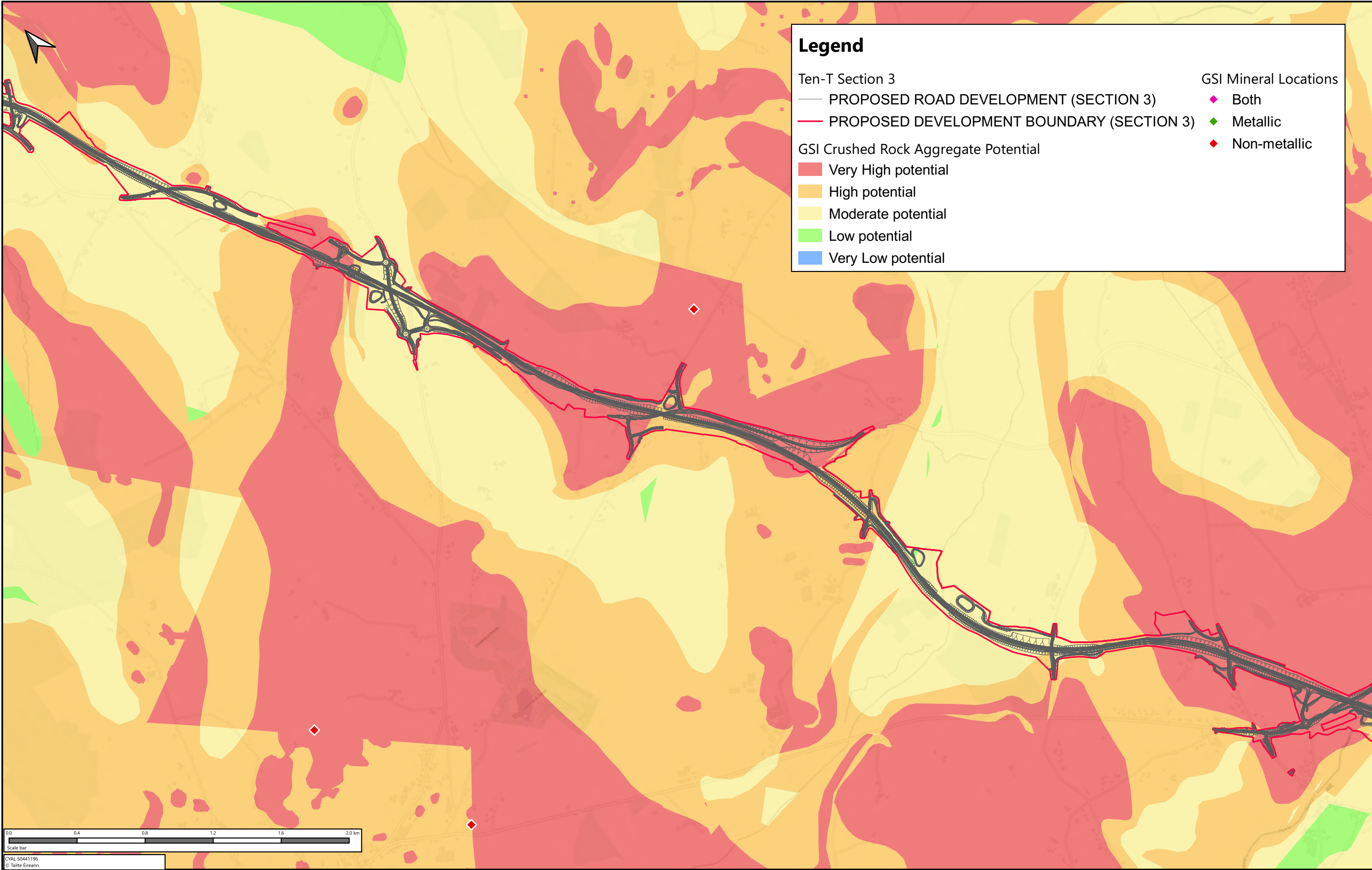
Notes

DO NOT SCALE, use figured dimensions only. All levels are referred to Ordnance Survey Datum, Main Head.

This drawing is the property of Donegal County Council. It is a confidential document and must not be copied, used, or its contents divulged without prior written consent. This document should not be relied on or used in circumstances other than those for which it was originally prepared. Barry Transportation accepts no responsibility for this document to any other party other than the party by whom it was commissioned.

Rev.	Date	Drawn	Description	Chk'd	Appr.
P01	03.03.2026	SM	ISSUE FOR PLANNING	DOH	ED

Project Title: TEN-T Priority Route Improvement Project, Donegal Section 3 - N14 Manorcunningham to Lifford/Strabane/A5 Link				Status: A3
Drawing Title: Section 3 - Aggregate Potential				Rev: P01
Designed: AG	Date: MARCH 2026	Model File Identifier: EIAR DRAWING 10.6		
Drawn: SM	Scale: @A1 1:10000	File Identifier: TT_Y16112-BT-1A-HGT-S3-DR-CE-06140		
Approved: ED	Scale: @A3 1:20000			
Checked: DOH	Sheet: 1 of 3			



Legend

Ten-T Section 3

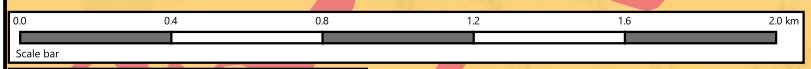
- PROPOSED ROAD DEVELOPMENT (SECTION 3)
- PROPOSED DEVELOPMENT BOUNDARY (SECTION 3)

GSI Crushed Rock Aggregate Potential

- Very High potential
- High potential
- Moderate potential
- Low potential
- Very Low potential

GSI Mineral Locations

- Both
- Metallic
- Non-metallic



CVAL 50441196
© Tailte Éireann.

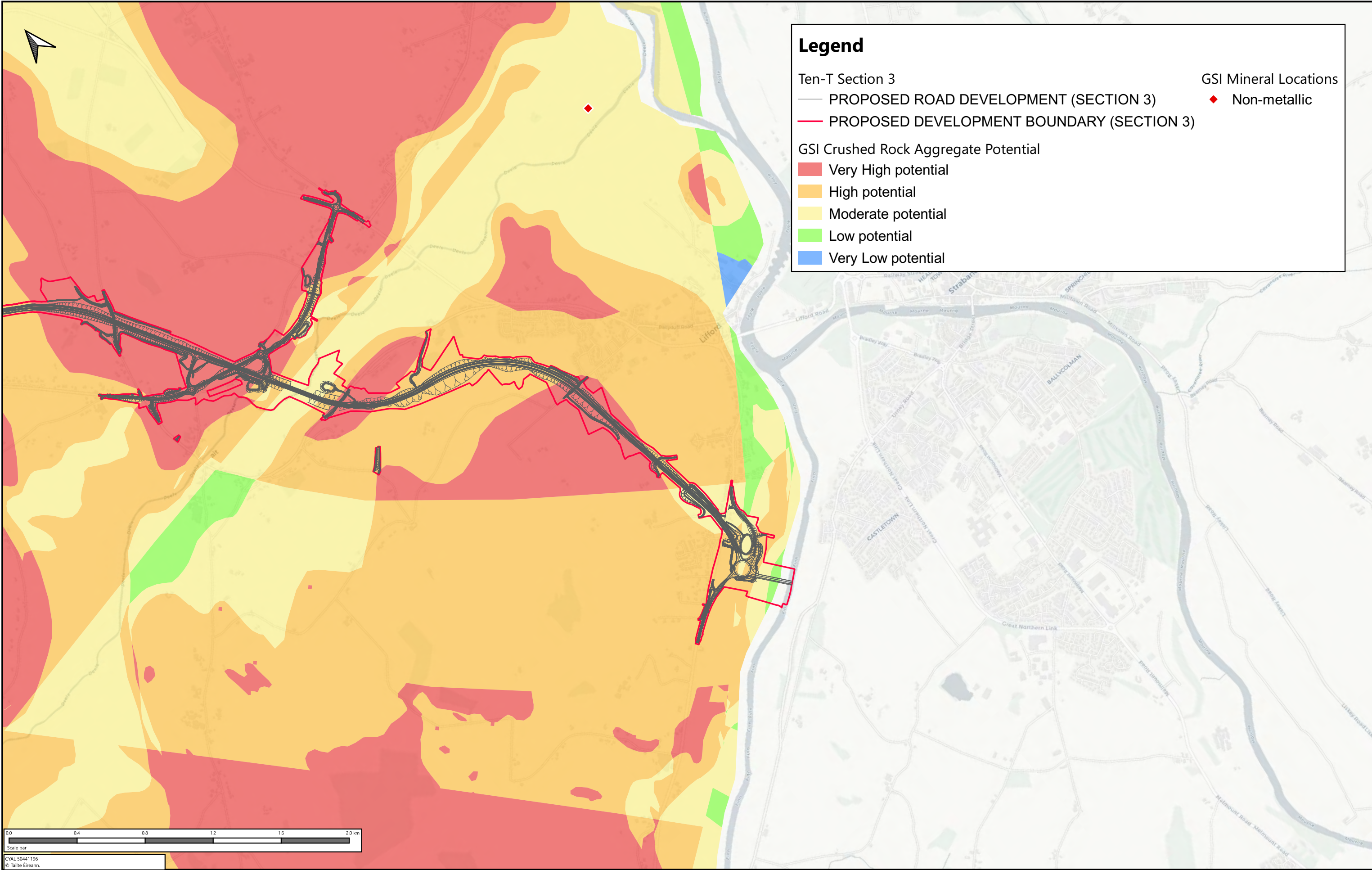
Notes

DO NOT SCALE, use figured dimensions only. All levels are referred to Ordnance Survey Datum, Main Head.

This drawing is the property of Donegal County Council. It is a confidential document and must not be copied, used, or its contents divulged without prior written consent. This document should not be relied on or used in circumstances other than those for which it was originally prepared. Barry Transportation accepts no responsibility for this document to any other party other than the party by whom it was commissioned.

Rev.	Date	Drawn	Description	Chk'd	Appr.
P01	03.03.2026	SM	ISSUE FOR PLANNING	DOH	ED

Project Title:		TEN-T Priority Route Improvement Project, Donegal Section 3 - N14 Manorcunningham to Lifford/Strabane/A5 Link		Status:	A3
Drawing Title:		Section 3 - Aggregate Potential		Rev:	P01
Designed:	AG	Date:	MARCH 2026	Model File Identifier:	GIAR DRAWING 10.6
Drawn:	SM	Scale:	@A1 1:10000 @A3 1:20000	File Identifier:	TT_Y16112-BT-1A-HGT-S3-DR-CE-06141
Approved:	ED	Sheet:	2 of 3		
Checked:	DOH				



Legend

Ten-T Section 3

- PROPOSED ROAD DEVELOPMENT (SECTION 3)
- PROPOSED DEVELOPMENT BOUNDARY (SECTION 3)

GSI Mineral Locations

- ◆ Non-metallic

GSI Crushed Rock Aggregate Potential

- Very High potential
- High potential
- Moderate potential
- Low potential
- Very Low potential



CVAL 50441196
© Tailte Éireann.

Notes

DO NOT SCALE, use figured dimensions only. All levels are referred to Ordnance Survey Datum, Main Head.

This drawing is the property of Donegal County Council. It is a confidential document and must not be copied, used, or its contents divulged without prior written consent. This document should not be relied on or used in circumstances other than those for which it was originally prepared. Barry Transportation accepts no responsibility for this document to any other party other than the party by whom it was commissioned.

Rev.	Date	Drawn	Description	Chk'd	Appr.
P01	03.03.2026	SM	ISSUE FOR PLANNING	DOH	ED

Project Title:		TEN-T Priority Route Improvement Project, Donegal		Status:
Section 3 - N14 Manor Cunninghamham to Lifford/Strabane/A5 Link				A3
Drawing Title:		Section 3 - Aggregate Potential		Rev:
				P01
Designed: AG	Date: MARCH 2026	Model File Identifier:		
Drawn: SM	Scale: @A1 1:10000	EIAR DRAWING 10.6		
Approved: ED	@A3 1:20000	File Identifier:		
Checked: DOH	Sheet: 3 of 3	TT_Y16112-BT-1A-HGT-S3-DR-CE-06142		