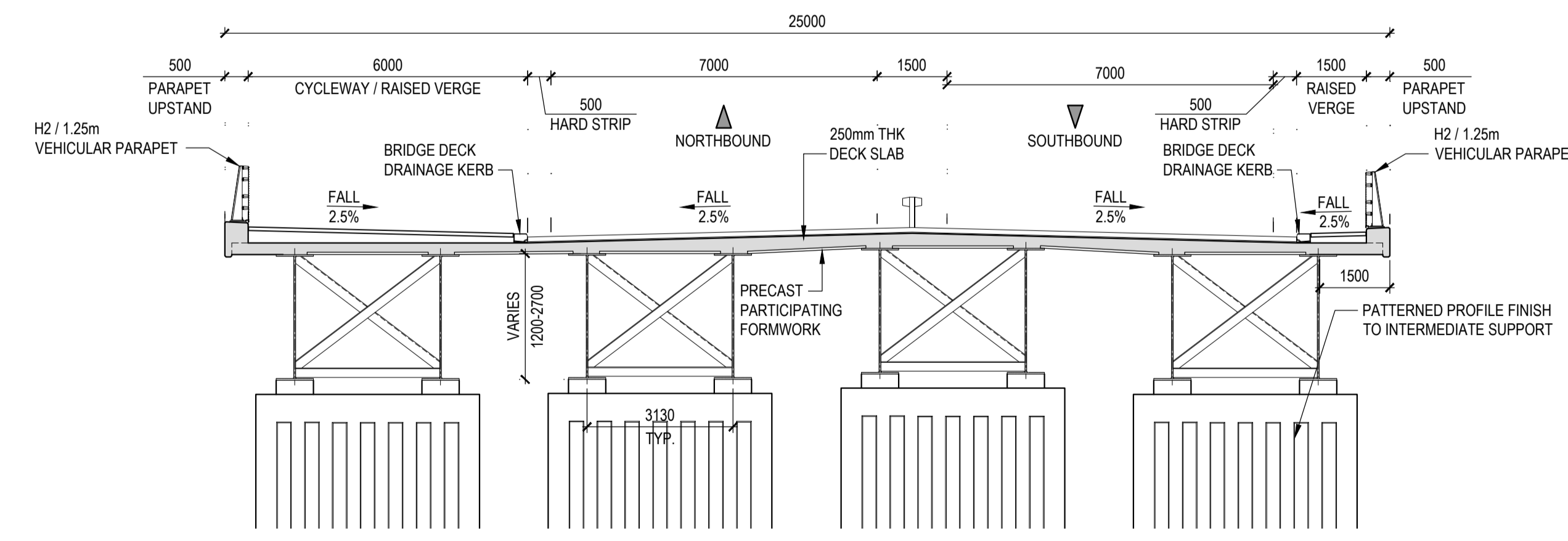
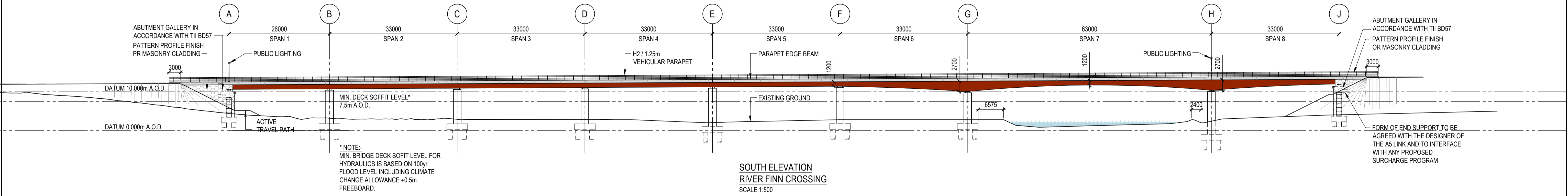
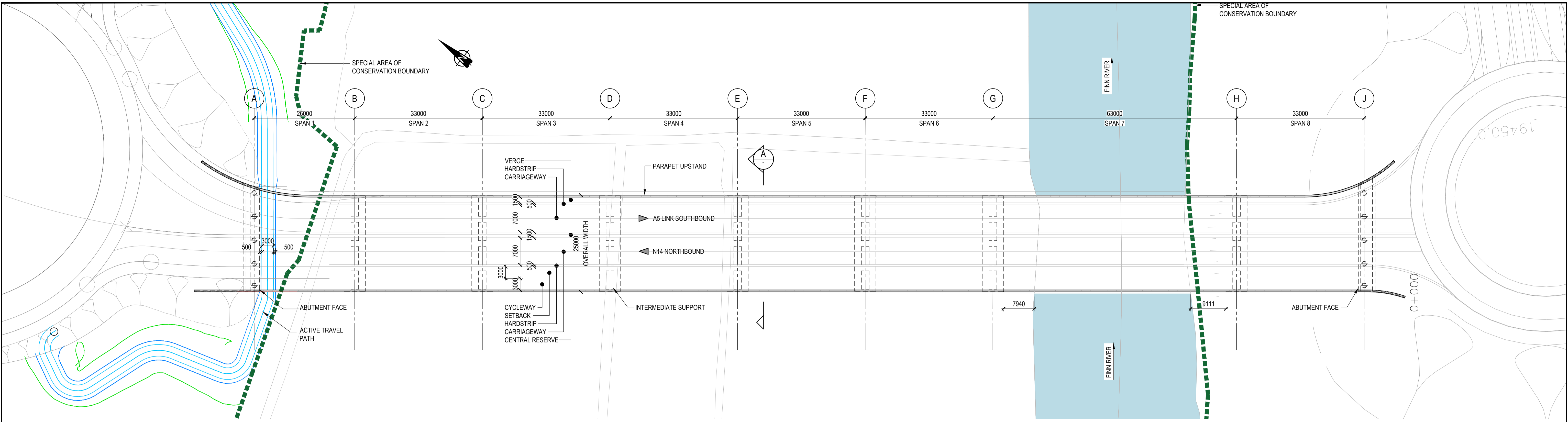


CYAL50441196 © Taitte Éireann - Surveying



**NOTES:**

- LEVELS IN METERS TO MALIN HEAD
- CO-ORDINATES TO IRISH TRANSVERSE MERCATOR (ITM)

**LEGEND:**

C.P.O. BOUNDARY ———

SPECIAL AREA OR CONSERVATION BOUNDARY (S.A.C.) - - - - -

CYAL50441196 © Taitte Éireann - Surveying



**Notes**  
DO NOT SCALE, use figured dimensions only. All levels are referred to Ordnance Survey Datum, Malin Head.  
This drawing is the property of Donegal County Council. It is a confidential document and must not be copied, used, or its contents divulged without prior written consent. This document should not be relied on or used in circumstances other than those for which it was originally prepared. Barry Transportation accepts no responsibility for this document to any other party other than the party by whom it was commissioned.

Rev.	Date	Drawn	Description	Chkd	Appr.
P01	15/12/2025	DG	ISSUE FOR PLANNING	MC	WL

Project Title: <b>TEN-T Priority Route Improvement Project, Donegal</b>			
Section 3 - N14 Manor Cunningham to Lifford/Strabane/A5 Link			
Drawing Title: <b>N14-N15 TO A5 LINK - RIVER FINN CROSSING (REF N14R175)</b>		Status: <b>A3</b>	
GENERAL ARRANGEMENT		Rev: <b>P01</b>	
Designed: MC	Date: December 2025	EIAR Drawing Identifier:	
Drawn: DG	Scale @ A1 AS SHOWN	EIAR Drawing 4.35	
Approved: WL	@ ASAS SHOWN	File Identifier:	
Checked: MC	Sheet:	TT_Y16112-BT-1A-SBR-S3-SK-S-00940	