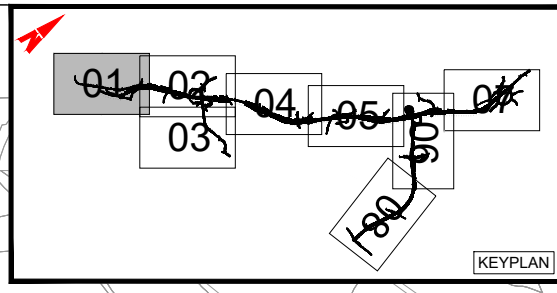


- LEGEND**
- PROPOSED DEVELOPMENT BOUNDARY
 - INFILTRATION BASIN / ATTENUATION POND
 - CROSS DRAIN (CD)
 - SURFACE WATER CHANNEL COLLECTION NETWORK
 - OPEN DRAIN (USED AS CUT OFF DRAIN)
 - CULVERT (CUL)
 - MINOR WATERCOURSE CROSSING (MWC)
 - INFILTRATION TRENCHES
 - CARRIER PIPE
 - FILTER DRAIN
 - KERBING DRAINAGE (KERBS AND GULLIES OR DRAINAGE KERB BLOCKS)
 - WATERCOURSE DIVERSION
 - FLOOD COMPENSATION AREAS (FCA)



SHEET 01
SHEET 02

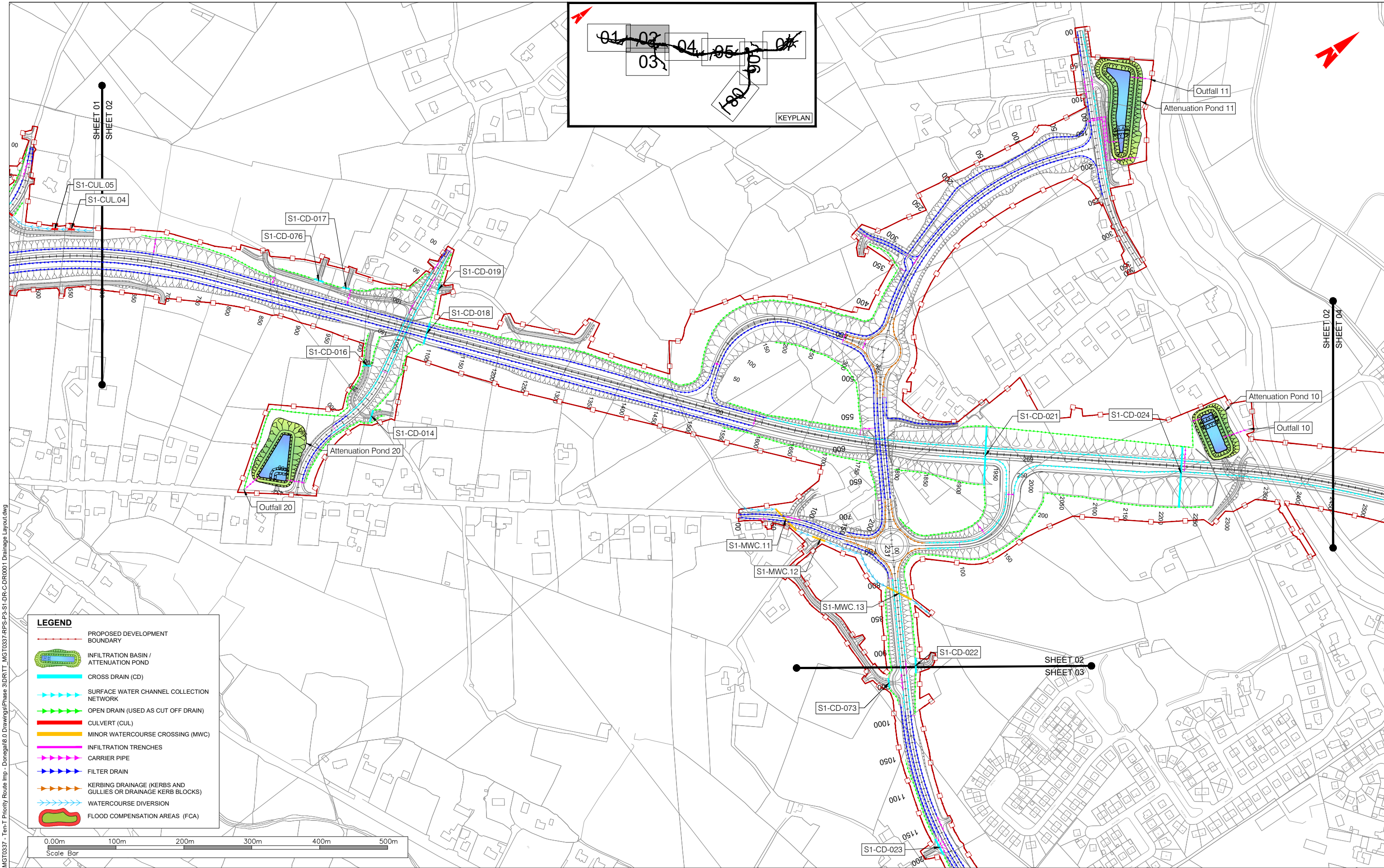
IGALW-BTP-F01\Work_Transport\MG0337 - Ten-T Priority Route Imp - Donegal\9.0 Drawings\Phase 3\DRIT - MG0337-RPS-P3-S1-DR-C-DR0001 - Drainage Layout.dwg



NOTES
DO NOT SCALE, use figured dimensions only.
All levels are referred to Ordnance Survey Datum, Malin Head.
This drawing is the property of the Donegal County Council. It is a confidential document and must not be copied, used, or its contents divulged without prior written consent. This document should not be relied on or used in circumstances other than those for which it was originally prepared. RPS / Barry Transportation accepts no responsibility for this document to any other party other than the party by whom it was commissioned.

Rev.	Date	Drawn	Description	Chk'd	Appr.
P01	29.10.25	MC	ISSUE FOR PLANNING	BL	EC

Project Title: TEN-T Priority Route Improvement Project, Donegal Section 1 - N15/N13 Ballybofey / Stranorlar Urban Region		Status: A3
Drawing Title: DRAINAGE LAYOUT		Rev: P01
Designed: MK	Date: OCT 2025	EIAR Drawing Identifier: TT_MGT0337-RPS-P3-S1-DR-C-DR0001
Drawn: MC	Scale @ A1: 1:2500	EIAR DRAWING 4.40
Approved: EC	@ A3: 1:5000	File Identifier: TT_MGT0337-RPS-P3-S1-DR-C-DR0001
Checked: BL	Sheet: 01 of 08	



LEGEND

- PROPOSED DEVELOPMENT BOUNDARY
- INFILTRATION BASIN / ATTENUATION POND
- CROSS DRAIN (CD)
- SURFACE WATER CHANNEL COLLECTION NETWORK
- OPEN DRAIN (USED AS CUT OFF DRAIN)
- CULVERT (CUL)
- MINOR WATERCOURSE CROSSING (MWC)
- INFILTRATION TRENCHES
- CARRIER PIPE
- FILTER DRAIN
- KERBING DRAINAGE (KERBS AND GULLIES OR DRAINAGE KERB BLOCKS)
- WATERCOURSE DIVERSION
- FLOOD COMPENSATION AREAS (FCA)



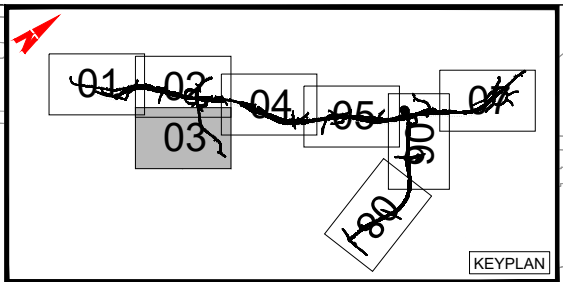
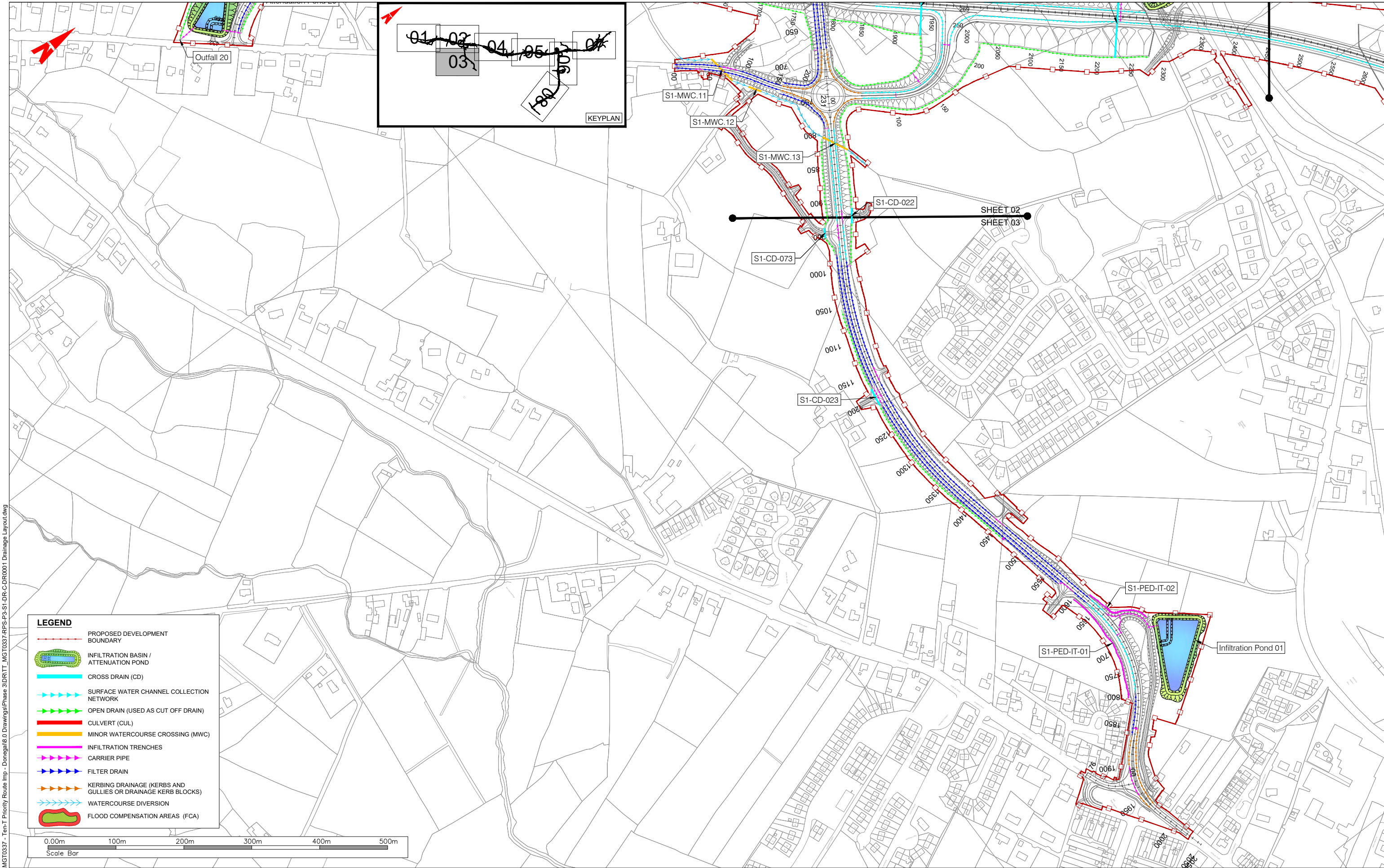
I:\GALW-BTP-F01\Work_Transport\MG0337 - Ten-T Priority Route Imp - Donegal\9.0 Drawings\Phase 9\DRIT - MG0337-RPS-P3-S1-DR-C-DR0001 - Drainage Layout.dwg
 ©Ordnance Survey Ireland. All rights reserved. License number CYAL50441196 ©Taitte Éireann - Surveying



NOTES
 DO NOT SCALE. Use figured dimensions only.
 All levels are referred to Ordnance Survey Datum, Malin Head.
 This drawing is the property of the Donegal County Council. It is a confidential document and must not be copied, used, or its contents divulged without prior written consent. This document should not be relied on or used in circumstances other than those for which it was originally prepared. RPS / Barry Transportation accepts no responsibility for this document to any other party other than the party by whom it was commissioned.

Rev.	Date	Drawn	Description	Chk'd	Appr.
P01	29.10.25	MC	ISSUE FOR PLANNING	BL	EC

Project Title: TEN-T Priority Route Improvement Project, Donegal Section 1 - N15/N13 Ballybofey / Stranorlar Urban Region		Status: A3
Drawing Title: DRAINAGE LAYOUT		Rev: P01
Designed: MK	Date: OCT 2025	EIAR Drawing Identifier: TT_MGT0337-RPS-P3-S1-DR-C-DR0001
Drawn: MC	Scale @ A1: 1:2500	File Identifier: TT_MGT0337-RPS-P3-S1-DR-C-DR0001
Approved: EC	@ A3: 1:5000	
Checked: BL	Sheet: 02 of 08	



- LEGEND**
- PROPOSED DEVELOPMENT BOUNDARY
 - INFILTRATION BASIN / ATTENUATION POND
 - CROSS DRAIN (CD)
 - SURFACE WATER CHANNEL COLLECTION NETWORK
 - OPEN DRAIN (USED AS CUT OFF DRAIN)
 - CULVERT (CUL)
 - MINOR WATERCOURSE CROSSING (MWC)
 - INFILTRATION TRENCHES
 - CARRIER PIPE
 - FILTER DRAIN
 - KERBING DRAINAGE (KERBS AND GULLIES OR DRAINAGE KERB BLOCKS)
 - WATERCOURSE DIVERSION
 - FLOOD COMPENSATION AREAS (FCA)



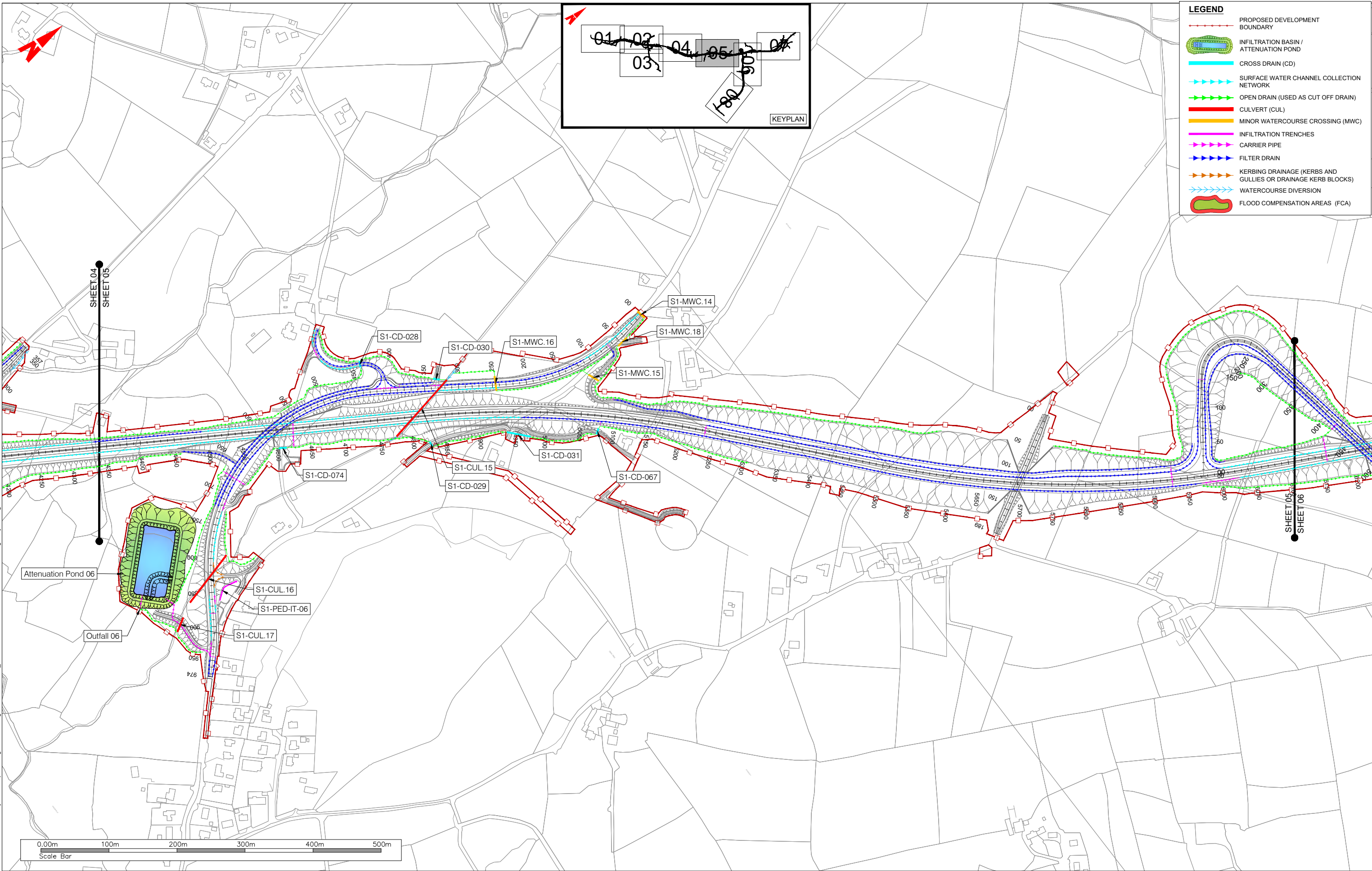
IGALW-BTP-F01\Work_Transport\MG0337 - Ten-T Priority Route Imp - Donegal\9.0 Drawings\Phase 9\DRIT - MG0337-RPS-P3-S1-DR-C-DR0001_Drainage Layout.dwg



NOTES
 DO NOT SCALE, use figured dimensions only.
 All levels are referred to Ordnance Survey Datum, Malin Head.
 This drawing is the property of the Donegal County Council. It is a confidential document and must not be copied, used, or its contents divulged without prior written consent. This document should not be relied on or used in circumstances other than those for which it was originally prepared. RPS / Barry Transportation accepts no responsibility for this document to any other party other than the party by whom it was commissioned.

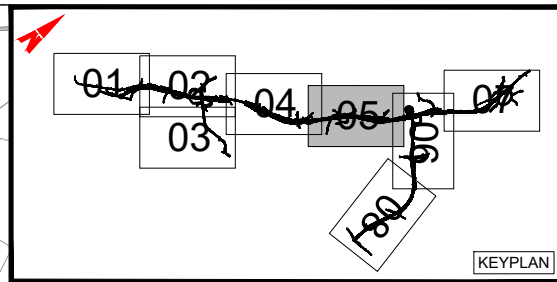
Rev.	Date	Drawn	Description	Chk'd	Appr.
P01	29.10.25	MC	ISSUE FOR PLANNING	BL	EC

Project Title: TEN-T Priority Route Improvement Project, Donegal Section 1 - N15/N13 Ballybofey / Stranorlar Urban Region		Status: A3
Drawing Title: DRAINAGE LAYOUT		Rev: P01
Designed: MK	Date: OCT 2025	EIAR Drawing Identifier: TT_MGT0337-RPS-P3-S1-DR-C-DR0001
Drawn: MC	Scale @ A1: 1:2500	File Identifier: TT_MGT0337-RPS-P3-S1-DR-C-DR0001
Approved: EC	@ A3: 1:5000	
Checked: BL	Sheet: 03 of 08	



LEGEND

- PROPOSED DEVELOPMENT BOUNDARY
- INFILTRATION BASIN / ATTENUATION POND
- CROSS DRAIN (CD)
- SURFACE WATER CHANNEL COLLECTION NETWORK
- OPEN DRAIN (USED AS CUT OFF DRAIN)
- CULVERT (CUL)
- MINOR WATERCOURSE CROSSING (MWC)
- INFILTRATION TRENCHES
- CARRIER PIPE
- FILTER DRAIN
- KERBING DRAINAGE (KERBS AND GULLIES OR DRAINAGE KERB BLOCKS)
- WATERCOURSE DIVERSION
- FLOOD COMPENSATION AREAS (FCA)



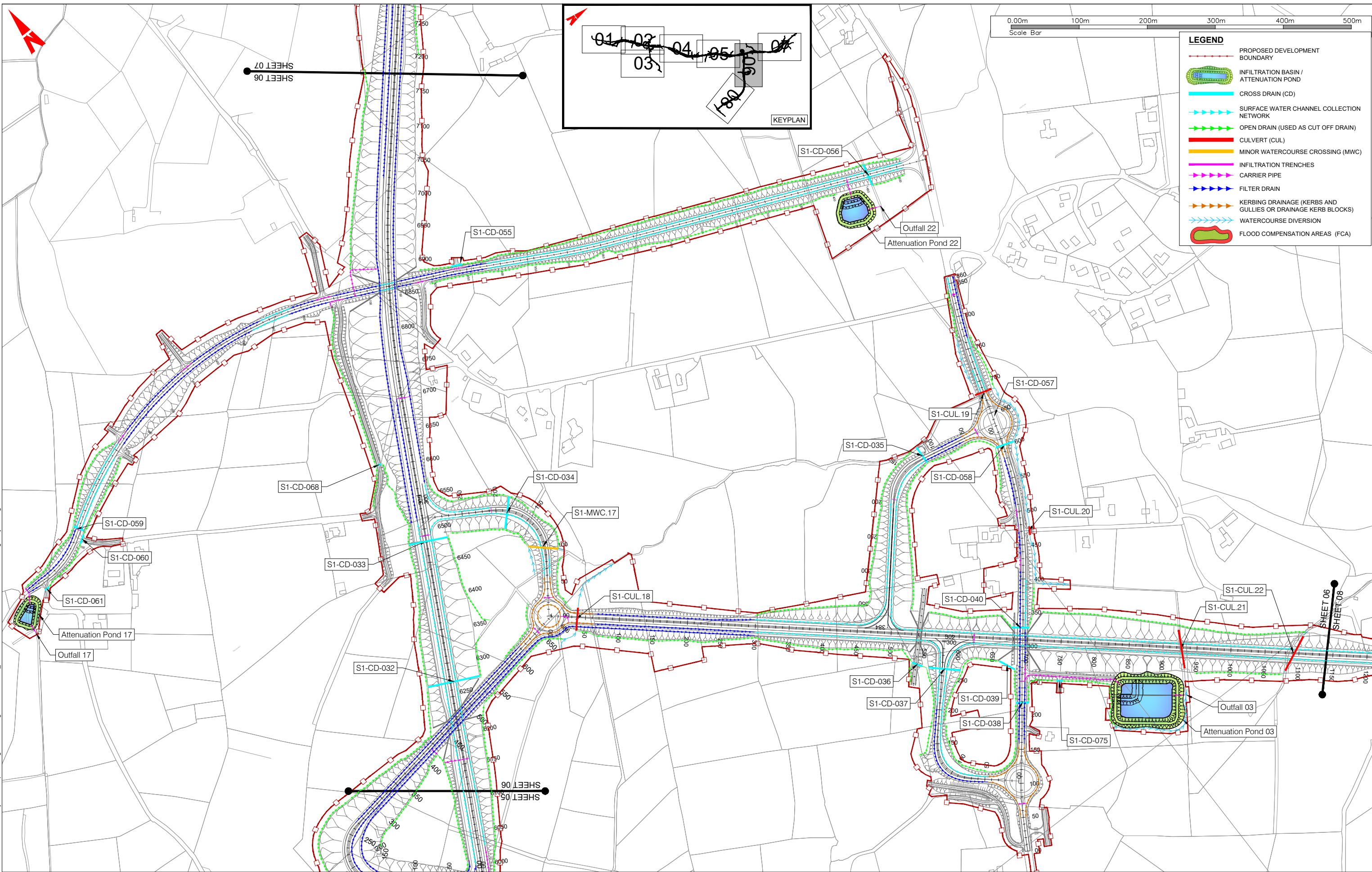
I:\GALW-BTP-F01\Work_Transport\MG0337 - Ten-T Priority Route Imp - Donegal\9.0 Drawings\Phase 3\DRIT - MG10337-RPS-P3-S1-DR-C-DR0001 - Drainage Layout.dwg



NOTES
 DO NOT SCALE, use figured dimensions only.
 All levels are referred to Ordnance Survey Datum, Malin Head.
 This drawing is the property of the Donegal County Council. It is a confidential document and must not be copied, used, or its contents divulged without prior written consent. This document should not be relied on or used in circumstances other than those for which it was originally prepared. RPS / Barry Transportation accepts no responsibility for this document to any other party other than the party by whom it was commissioned.

Rev.	Date	Drawn	Description	Chk'd	Appr.
P01	29.10.25	MC	ISSUE FOR PLANNING	BL	EC

Project Title: TEN-T Priority Route Improvement Project, Donegal Section 1 - N15/N13 Ballybofey / Stranorlar Urban Region		Status: A3
Drawing Title: DRAINAGE LAYOUT		Rev: P01
Designed: MK	Date: OCT 2025	EIAR Drawing Identifier: EIAR DRAWING 4.40
Drawn: MC	Scale @ A1: 1:2500	File Identifier: TT_MGT0337-RPS-P3-S1-DR-C-DR0001
Approved: EC	@ A3: 1:5000	
Checked: BL	Sheet: 05 of 08	



I:\GALW-BTP-F01\Work_Transport\MGT0337 - Ten-T Priority Route Imp - Donegal\18.0 Drawings\Phase 3\DRIT - MG10337-RPS-P3-S1-DR-C-DR0001_Drainage Layout.dwg



NOTES

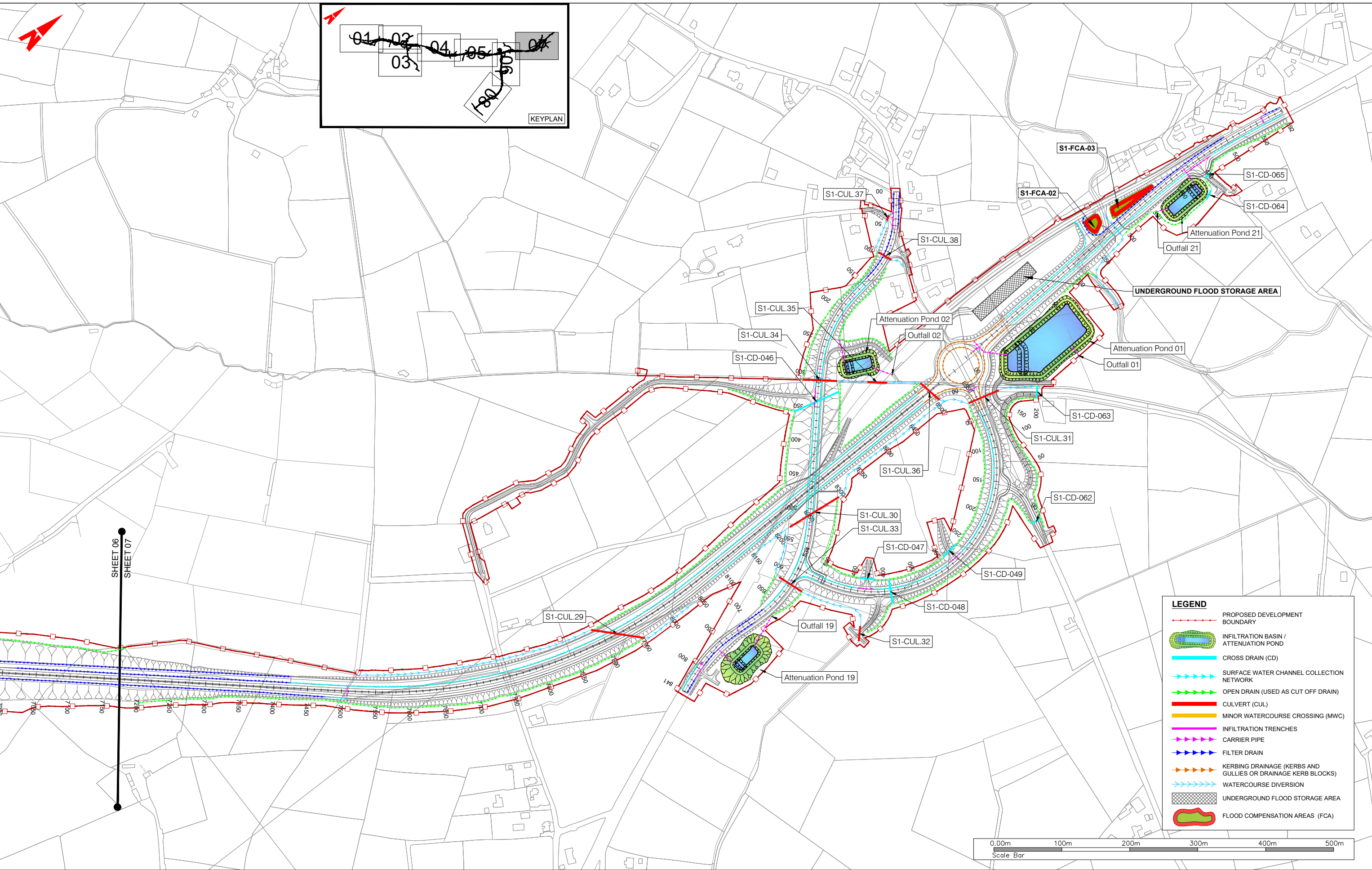
DO NOT SCALE, use figured dimensions only.

All levels are referred to Ordnance Survey Datum, Malin Head.

This drawing is the property of the Donegal County Council. It is a confidential document and must not be copied, used, or its contents divulged without prior written consent. This document should not be relied on or used in circumstances other than those for which it was originally prepared. RPS / Barry Transportation accepts no responsibility for this document to any other party other than the party by whom it was commissioned.

Rev.	Date	Drawn	Description	Chk'd	Appr.
P01	29.10.25	MC	ISSUE FOR PLANNING	BL	EC

Project Title: TEN-T Priority Route Improvement Project, Donegal Section 1 - N15/N13 Ballybofey / Stranorlar Urban Region		Status: A3
Drawing Title: DRAINAGE LAYOUT		Rev: P01
Designed: MK	Date: OCT 2025	EIAR Drawing Identifier: EIAR DRAWING 4.40
Drawn: MC	Scale @ A1: 1:2500	File Identifier: TT_MGT0337-RPS-P3-S1-DR-C-DR0001
Approved: EC	@ A3: 1:5000	
Checked: BL	Sheet: 06 of 08	



LEGEND

- PROPOSED DEVELOPMENT BOUNDARY
- INFILTRATION BASIN / ATTENUATION POND
- CROSS DRAIN (CD)
- SURFACE WATER CHANNEL COLLECTION NETWORK
- OPEN DRAIN (USED AS CUT OFF DRAIN)
- CULVERT (CUL)
- MINOR WATERCOURSE CROSSING (MWC)
- INFILTRATION TRENCHES
- CARRIER PIPE
- FILTER DRAIN
- KERBING DRAINAGE (KERBS AND GULLIES OR DRAINAGE KERB BLOCKS)
- WATERCOURSE DIVERSION
- UNDERGROUND FLOOD STORAGE AREA
- FLOOD COMPENSATION AREAS (FCA)

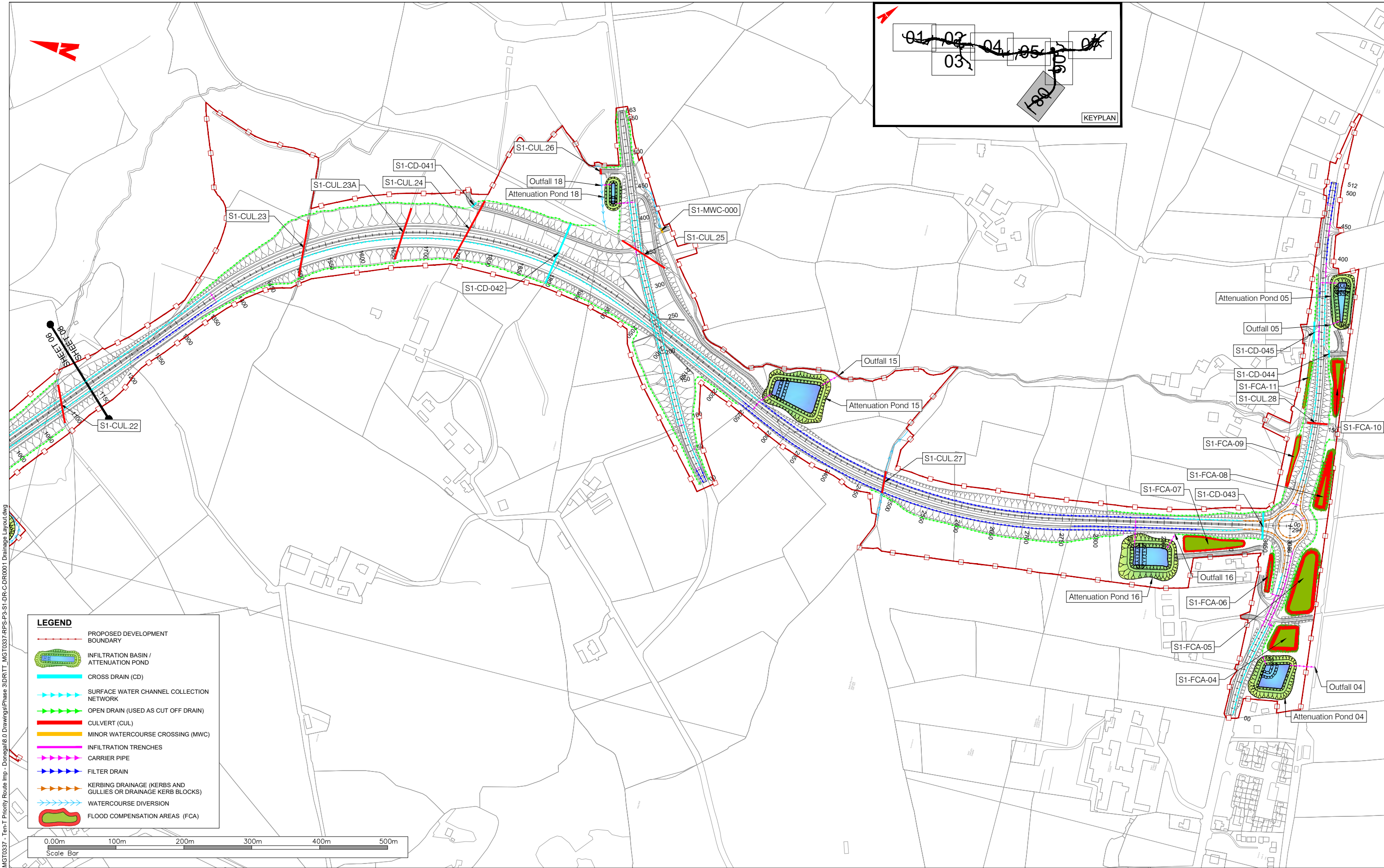
NOTES
 DO NOT SCALE, use figured dimensions only.
 All levels are referred to Ordnance Survey Datum, Malin Head.
 This drawing is the property of the Donegal County Council. It is a confidential document and must not be copied, used, or its contents divulged without prior written consent. This document should not be relied on or used in circumstances other than those for which it was originally prepared. RPS / Barry Transportation accepts no responsibility for this document to any other party other than the party by whom it was commissioned.

Rev.	Date	Drawn	Description	Chk'd	Appr.
P01	29.10.25	MC	ISSUE FOR PLANNING	BL	EC

Project Title: TEN-T Priority Route Improvement Project, Donegal Section 1 - N15/N13 Ballybofey / Stranorlar Urban Region		Status: A3
Drawing Title: DRAINAGE LAYOUT		Rev: P01
Designed: MK	Date: OCT 2025	EIAR Drawing Identifier: EIAR DRAWING 4.40
Drawn: MC	Scale @ A1: 1:2500	File Identifier: TT_MGT0337-RPS-P3-S1-DR-C-DR0001
Approved: EC	@ A3: 1:5000	
Checked: BL	Sheet: 07 of 08	

©Ordnance Survey Ireland. All rights reserved. License number CYAL50441196 ©Taitte Éireann - Surveying

IGALW-BTP-F01\Work_Transport\MG0337 - Ten-T Priority Route Imp - Donegal\9.0 Drawings\Phase 3\DRIT - MG0337-RPS-P3-S1-DR-C-DR0001 Drainage Layout.dwg



LEGEND

- PROPOSED DEVELOPMENT BOUNDARY
- INFILTRATION BASIN / ATTENUATION POND
- CROSS DRAIN (CD)
- SURFACE WATER CHANNEL COLLECTION NETWORK
- OPEN DRAIN (USED AS CUT OFF DRAIN)
- CULVERT (CUL)
- MINOR WATERCOURSE CROSSING (MWC)
- INFILTRATION TRENCHES
- CARRIER PIPE
- FILTER DRAIN
- KERBING DRAINAGE (KERBS AND GULLIES OR DRAINAGE KERB BLOCKS)
- WATERCOURSE DIVERSION
- FLOOD COMPENSATION AREAS (FCA)



I:\GALW-BTP-F01\Work_Transport\MGT0337 - Ten-T Priority Route Imp - Donegal\9.0 Drawings\Phase 9\DRIT - MG10337-RPS-P3-S1-DR-C-DR0001 Drainage Layout.dwg



NOTES
 DO NOT SCALE, use figured dimensions only.
 All levels are referred to Ordnance Survey Datum, Malin Head.
 This drawing is the property of the Donegal County Council. It is a confidential document and must not be copied, used, or its contents divulged without prior written consent. This document should not be relied on or used in circumstances other than those for which it was originally prepared. RPS / Barry Transportation accepts no responsibility for this document to any other party other than the party by whom it was commissioned.

Rev.	Date	Drawn	Description	Chk'd	Appr.
P01	29.10.25	MC	ISSUE FOR PLANNING	BL	EC

Project Title: TEN-T Priority Route Improvement Project, Donegal Section 1 - N15/N13 Ballybofey / Stranorlar Urban Region

Drawing Title: DRAINAGE LAYOUT

Status: A3

Designed: MK Date: OCT 2025
 Drawn: MC Scale @ A1: 1:2500
 Approved: EC @ A3: 1:5000
 Checked: BL Sheet: 08 of 08

EIAR Drawing Identifier: EIAR DRAWING 4.40
 File Identifier: TT_MGT0337-RPS-P3-S1-DR-C-DR0001

Rev: P01