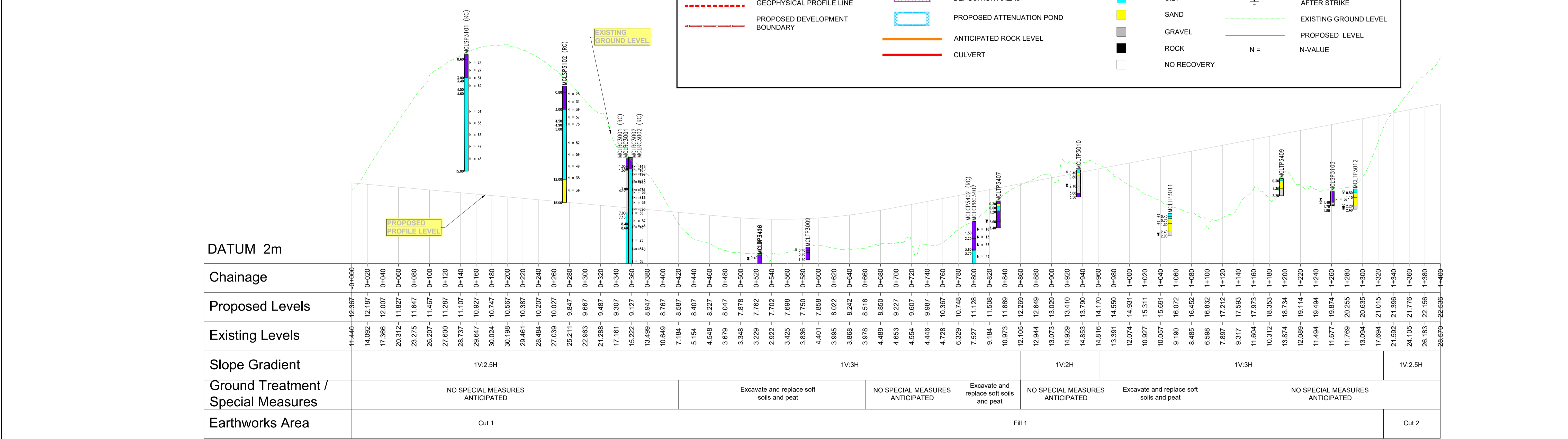


PLAN HORIZONTAL SCALE 1:2500 @ A1; 1:5000 @ A3

### LEGEND

PLAN		PROFILE	
	CABLE PERCUSSIVE/ ROTARY CORE BOREHOLE		TOPSOIL
	TRIAL PIT		MADE GROUND
	WINDOW SAMPLE		PEAT
	GEOPHYSICAL PROFILE LINE		CLAY
	PROPOSED DEVELOPMENT BOUNDARY		SILT
	EXCAVATE & REPLACE (PEAT, ORGANIC AND SOFT CLAY/SILT)		SAND
	SUBFORMATION EXPECTED TO BE ROCK		GRAVEL
	MATERIAL EXTRACTION AND DEPOSITION AREAS		ROCK
	PROPOSED ATTENUATION POND		NO RECOVERY
	ANTICIPATED ROCK LEVEL		COBBLES AND BOULDERS
	CULVERT		PIEZOMETER / STANDPIPE MEASUREMENT
	Excavate and replace (Peat, Organic and soft clay)		WATER STRIKE
	Subformation expected to be rock		WATER LEVEL 20 MINUTES AFTER STRIKE
	Material extraction and deposition areas		EXISTING GROUND LEVEL
	Proposed attenuation pond		PROPOSED LEVEL
	Anticipated rock level		N = N-VALUE



MAINLINE ALIGNMENT  
LONGITUDINAL PROFILE-CH:0-1400  
SCALE: H 1:2500, V 1:250

CYAL60441196  
© Taitte Éireann - Surveying

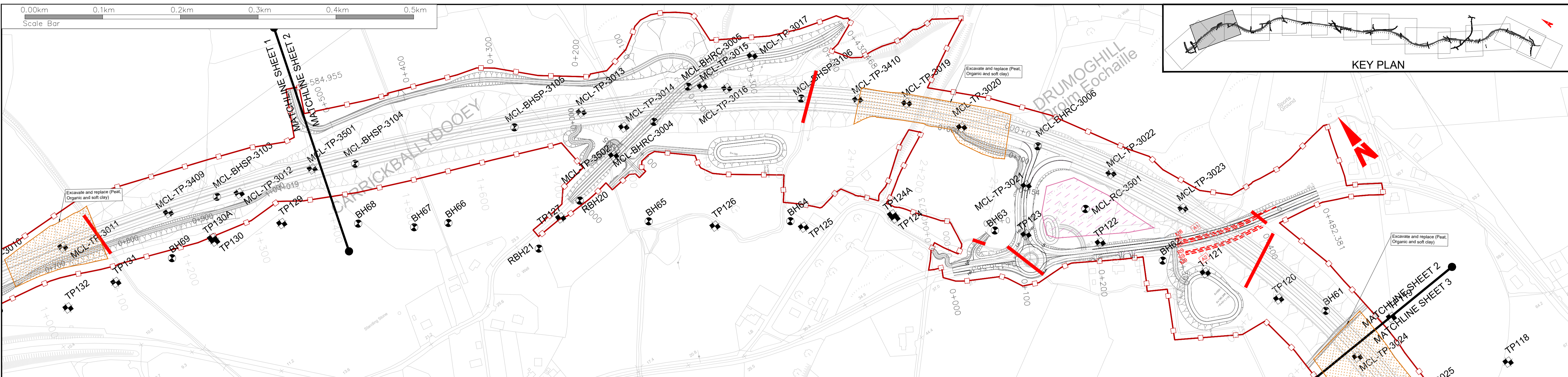


Notes  
DO NOT SCALE. Use figured dimensions only. All levels are referred to Ordnance Survey Datum, Main Head.  
This drawing is the property of Donegal County Council. It is a confidential document and must not be copied, used, or its contents divulged without prior written consent. This document should not be relied on or used in circumstances other than those for which it was originally prepared. Barry Transportation accepts no responsibility for this document to any other party other than the party by whom it was commissioned.

Rev.	Date	Drawn	Description	Ch'd	Appr.
P01	12.11.25	MG	ISSUE FOR PLANNING	JMM	ED

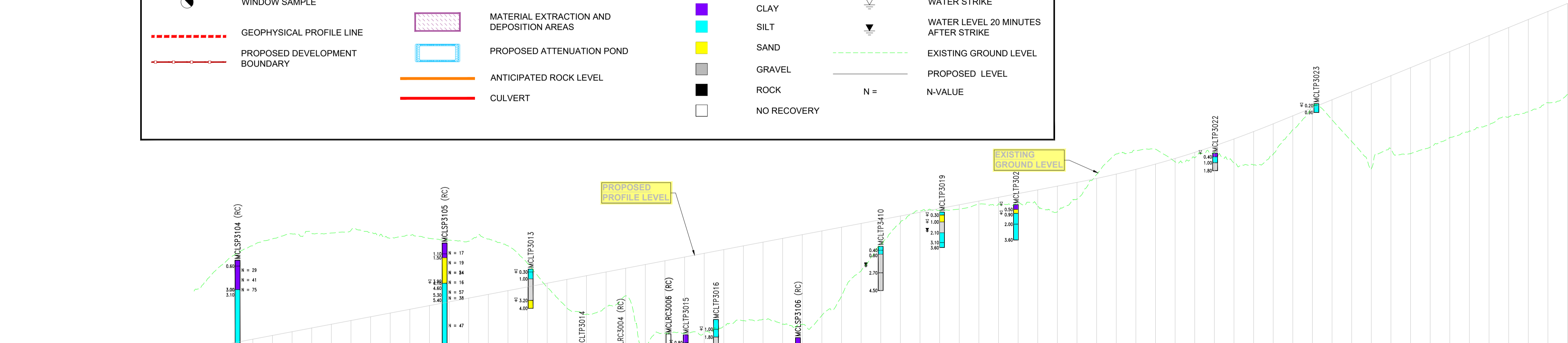
Project Title: TEN-T PRIORITY ROUTE IMPROVEMENT PROJECT DONEGAL Section 3 - N14 Manorcunningham to Lifford/Strabane/A5 Link		Status: A3
Drawing Title: GROUND INVESTIGATION & EARTHWORKS SECTION 3 MAINLINE		Rev: P01
Designed: JMM	Date: NOV 2025	EAIR Drawing Identifier:
Drawn: MG	Scale @ A1: 1:2500	EAIR DRAWING 4.62
Approved: ED	@ A3: 1:5000	File Identifier: TT_Y16112-BT-1A-HGT-S3-DR-CH-06120
Checked: JMM	Sheet: 1 OF 13	

P:\Halcrow\Bany Y16 Projects\Y16112 - TEN-T Priority Route Improvement Project Donegal\Civil\DWG\Prelim Design\CIV\DWG\Gantt\_Y16112-BT-1A-HGT-S3-DR-CH-06120\_Earthworks\_Plan\_and\_Profile\_P01.dwg



PLAN HORIZONTAL SCALE 1:2500 @ A1; 1:5000 @ A3

PLAN		PROFILE	
	CABLE PERCUSSIVE/ ROTARY CORE BOREHOLE		EXCAVATE & REPLACE (PEAT, ORGANIC AND SOFT CLAY/SILT)
	TRIAL PIT		SUBFORMATION EXPECTED TO BE ROCK
	WINDOW SAMPLE		MATERIAL EXTRACTION AND DEPOSITION AREAS
	GEOPHYSICAL PROFILE LINE		PROPOSED ATTENUATION POND
	PROPOSED DEVELOPMENT BOUNDARY		ANTICIPATED ROCK LEVEL
			CULVERT
			TOPSOIL
			MADE GROUND
			PEAT
			CLAY
			SILT
			SAND
			GRAVEL
			ROCK
			NO RECOVERY
			COBBLES AND BOULDERS
			PIEZOMETER / STANDPIPE MEASUREMENT
			WATER STRIKE
			WATER LEVEL 20 MINUTES AFTER STRIKE
			EXISTING GROUND LEVEL
			PROPOSED LEVEL
			N = N-VALUE



Chainage	Proposed Levels	Existing Levels	Slope Gradient	Ground Treatment / Special Measures	Earthworks Area
1+400	22.596	28.570	1V:2.5H	NO SPECIAL MEASURES ANTICIPATED	Cut 2
1+420	22.917	30.490			
1+440	23.297	32.198	LHS - 1V:2H	NO SPECIAL MEASURES ANTICIPATED	
1+460	23.677	33.205			
1+480	24.057	33.903	RHS - 1V:2H	Excavate and replace soft soils and peat	
1+500	24.438	34.403			
1+520	24.818	34.454	LHS - 1V:2H	NO SPECIAL MEASURES ANTICIPATED	
1+540	25.198	34.492			
1+560	25.579	34.772	RHS - 1V:2H	Excavate and replace soft soils and peat	
1+580	25.959	34.502			
1+600	26.339	33.988	LHS - 1V:2H	NO SPECIAL MEASURES ANTICIPATED	
1+620	26.719	34.292			
1+640	27.100	33.942	RHS - 1V:2H	Excavate and replace soft soils and peat	
1+660	27.480	33.768			
1+680	27.860	33.649	LHS - 1V:2H	NO SPECIAL MEASURES ANTICIPATED	
1+700	28.241	33.873			
1+720	28.621	33.183	RHS - 1V:2H	Excavate and replace soft soils and peat	
1+740	29.001	31.399			
1+760	29.381	28.947	LHS - 1V:2H	NO SPECIAL MEASURES ANTICIPATED	
1+780	29.762	26.858			
1+800	30.142	26.211	RHS - 1V:2H	Excavate and replace soft soils and peat	
1+820	30.522	26.947			
1+840	30.903	28.090	LHS - 1V:2H	NO SPECIAL MEASURES ANTICIPATED	
1+860	31.283	22.998			
1+880	31.663	24.280	RHS - 1V:2H	Excavate and replace soft soils and peat	
1+900	32.043	24.275			
1+920	32.424	24.347	LHS - 1V:2H	NO SPECIAL MEASURES ANTICIPATED	
1+940	32.804	24.950			
1+960	33.184	25.558	RHS - 1V:2H	Excavate and replace soft soils and peat	
1+980	33.564	25.698			
2+000	33.945	25.214	LHS - 1V:2H	NO SPECIAL MEASURES ANTICIPATED	
2+020	34.325	25.167			
2+040	34.705	26.096	RHS - 1V:2H	Excavate and replace soft soils and peat	
2+060	35.086	28.055			
2+080	35.466	30.636	LHS - 1V:2H	NO SPECIAL MEASURES ANTICIPATED	
2+100	35.846	33.301			
2+120	36.226	35.588	RHS - 1V:2H	Excavate and replace soft soils and peat	
2+140	36.607	36.757			
2+160	36.987	36.748	LHS - 1V:2H	NO SPECIAL MEASURES ANTICIPATED	
2+180	37.367	36.923			
2+200	37.748	37.428	RHS - 1V:2H	Excavate and replace soft soils and peat	
2+220	38.128	37.460			
2+240	38.508	37.572	LHS - 1V:2H	NO SPECIAL MEASURES ANTICIPATED	
2+260	38.888	37.255			
2+280	39.269	36.658	RHS - 1V:2H	Excavate and replace soft soils and peat	
2+300	39.649	37.935			
2+320	40.029	40.452	LHS - 1V:2H	NO SPECIAL MEASURES ANTICIPATED	
2+340	40.409	42.538			
2+360	40.789	42.852	RHS - 1V:2H	Excavate and replace soft soils and peat	
2+380	41.169	43.029			
2+400	41.549	41.747	LHS - 1V:2H	NO SPECIAL MEASURES ANTICIPATED	
2+420	41.929	42.161			
2+440	42.309	42.740	RHS - 1V:2H	Excavate and replace soft soils and peat	
2+460	42.689	42.740			
2+480	43.069	41.655	LHS - 1V:2H	NO SPECIAL MEASURES ANTICIPATED	
2+500	43.449	41.415			
2+520	43.829	42.509	RHS - 1V:2H	Excavate and replace soft soils and peat	
2+540	44.209	45.018			
2+560	44.589	47.326	LHS - 1V:2H	NO SPECIAL MEASURES ANTICIPATED	
2+580	44.969	46.020			
2+600	45.349	43.817	RHS - 1V:2H	Excavate and replace soft soils and peat	
2+620	45.729	41.027			
2+640	46.109	43.091	LHS - 1V:2H	NO SPECIAL MEASURES ANTICIPATED	
2+660	46.489	42.578			
2+680	46.869	43.245	RHS - 1V:2H	Excavate and replace soft soils and peat	
2+700	47.249	44.209			
2+720	47.629	44.877	LHS - 1V:2H	NO SPECIAL MEASURES ANTICIPATED	
2+740	48.009	45.519			
2+760	48.389	46.312	RHS - 1V:2H	Excavate and replace soft soils and peat	
2+780	48.769	46.837			
2+800	49.149	47.765	LHS - 1V:2H	NO SPECIAL MEASURES ANTICIPATED	

MAINLINE ALIGNMENT  
LONGITUDINAL PROFILE-CH:1400-2800  
SCALE: H 1:2500,V 1:250

CYAL50441196  
© Talte Éireann - Surveying

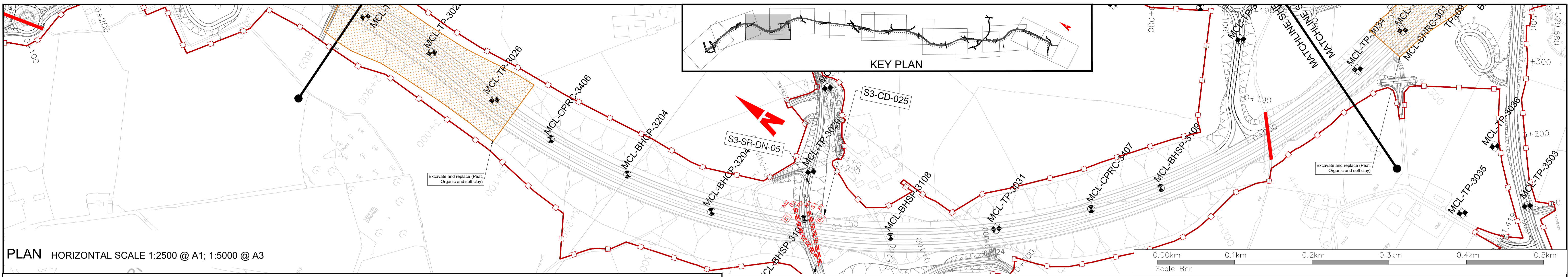


Notes  
DO NOT SCALE, use figured dimensions only. All levels are referred to Ordnance Survey Datum, Main Head.  
This drawing is the property of Donegal County Council. It is a confidential document and must not be copied, used, or its contents divulged without prior written consent. This document should not be relied on or used in circumstances other than those for which it was originally prepared. Barry Transportation accepts no responsibility for this document to any other party other than the party by whom it was commissioned.

Rev.	Date	Drawn	Description	Chkd	Appr.
P01	12.11.25	MG	ISSUE FOR PLANNING	JMM	ED

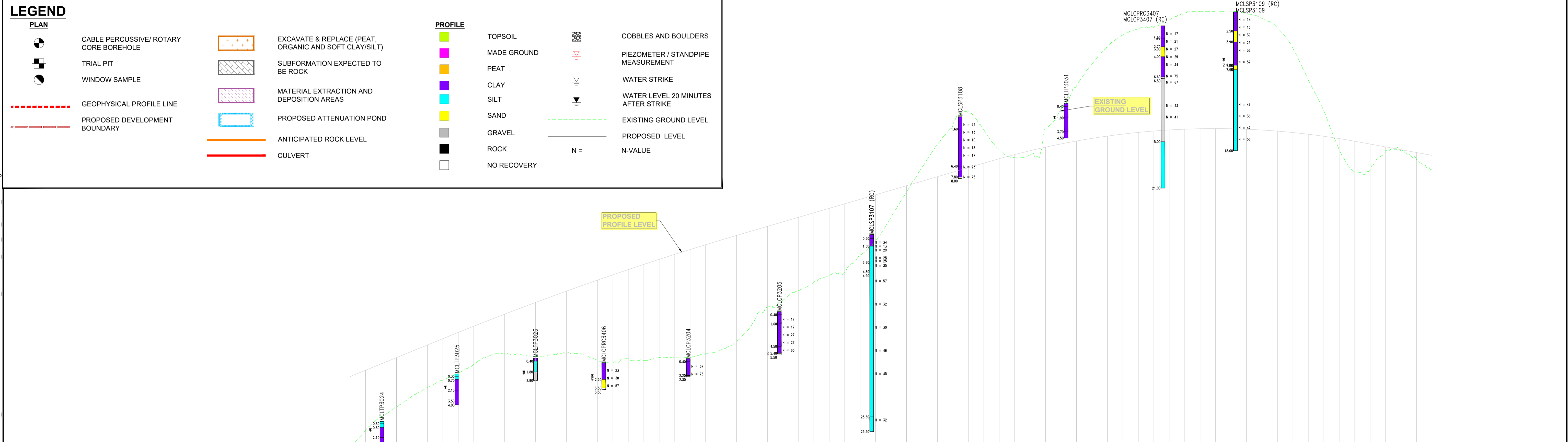
Project Title:	TEN-T PRIORITY ROUTE IMPROVEMENT PROJECT DONEGAL Section 3 - N14 Manorcunningham to Lifford/Strabane/A5 Link			Status:	A3
Drawing Title:	GROUND INVESTIGATION & EARTHWORKS SECTION 3 MAINLINE			Rev:	P01
Designed:	JMM	Date:	NOV 2025	EAIR Drawing Identifier:	
Drawn:	MG	Scale @ A1:	1:2500	EAIR Drawing 4.62	
Approved:	ED	@ A3:	1:5000	File Identifier:	TT_Y16112-BT-1A-HGT-S3-DR-CH-06120
Checked:	JMM	Sheet:	2 OF 13		

P:\Halcrow\Barr\Y16112 - TEN-T Priority Route Improvement Project Donegal\CAD\DWG\Prelim Design\CIV\DWG\GSI\TT\_Y16112-BT-1A-HGT-S3-DR-CH-06120\_Earthworks\_Plan\_and\_Profile\_P01.dwg



**LEGEND**

PLAN		PROFILE	
	CABLE PERCUSSIVE/ ROTARY CORE BOREHOLE		TOPSOIL
	TRIAL PIT		MADE GROUND
	WINDOW SAMPLE		PEAT
	GEOPHYSICAL PROFILE LINE		CLAY
	PROPOSED DEVELOPMENT BOUNDARY		SILT
	EXCAVATE & REPLACE (PEAT, ORGANIC AND SOFT CLAY/SILT)		SAND
	SUBFORMATION EXPECTED TO BE ROCK		GRAVEL
	MATERIAL EXTRACTION AND DEPOSITION AREAS		ROCK
	PROPOSED ATTENUATION POND		NO RECOVERY
	ANTICIPATED ROCK LEVEL		COBBLES AND BOULDERS
	CULVERT		PIEZOMETER / STANDPIPE MEASUREMENT
			WATER STRIKE
			WATER LEVEL 20 MINUTES AFTER STRIKE
			EXISTING GROUND LEVEL
			PROPOSED LEVEL
			N-VALUE



DATUM 45m

Chainage	Proposed Levels	Existing Levels	Slope Gradient	Ground Treatment / Special Measures	Earthworks Area
48.692	57.877	48.692			
50.928	58.694	50.928			
52.649	59.512	52.649			
53.959	60.329	53.959			
55.321	61.146	55.321			
56.474	61.964	56.474			
57.417	62.781	57.417			
58.315	63.592	58.315			
59.501	64.392	59.501			
60.542	65.179	60.542			
60.899	65.954	60.899			
60.751	66.717	60.751			
60.543	67.469	60.543			
60.725	68.208	60.725			
60.876	68.935	60.876			
60.719	69.651	60.719			
60.011	70.354	60.011			
59.643	71.046	59.643			
60.168	71.725	60.168			
59.982	72.393	59.982			
60.313	73.048	60.313			
60.361	73.692	60.361			
60.334	74.323	60.334			
60.822	74.943	60.822			
61.332	75.550	61.332			
62.475	76.146	62.475			
64.607	76.732	64.607			
66.889	77.317	66.889			
67.739	77.901	67.739			
69.022	78.486	69.022			
70.037	79.071	70.037			
70.933	79.656	70.933			
71.354	80.240	71.354			
73.589	80.825	73.589			
75.405	81.410	75.405			
78.525	81.995	78.525			
81.753	82.579	81.753			
84.941	83.164	84.941			
87.860	83.749	87.860			
90.401	84.334	90.401			
92.167	84.919	92.167			
89.825	85.503	89.825			
87.214	86.079	87.214			
86.209	86.618	86.209			
86.576	87.116	86.576			
89.943	87.575	89.943			
92.512	87.993	92.512			
95.506	88.371	95.506			
98.319	88.710	98.319			
100.530	89.008	100.530			
102.090	89.286	102.090			
102.939	89.485	102.939			
103.147	89.663	103.147			
104.036	89.802	104.036			
104.934	89.900	104.934			
105.165	89.958	105.165			
105.089	89.977	105.089			
105.158	89.955	105.158			
104.871	89.894	104.871			
104.260	89.792	104.260			
103.022	89.650	103.022			
100.400	89.469	100.400			
96.282	89.247	96.282			
92.272	88.985	92.272			
87.206	88.684	87.206			
84.337	88.342	84.337			
84.696	87.977	84.696			
87.131	87.611	87.131			
87.086	87.246	87.086			
85.955	86.881	85.955			
84.693	86.515	84.693			

MAINLINE ALIGNMENT  
LONGITUDINAL PROFILE-CH:2800-4200  
SCALE: H 1:2500,V 1:250

CYAL50441196  
© Talte Éireann - Surveying

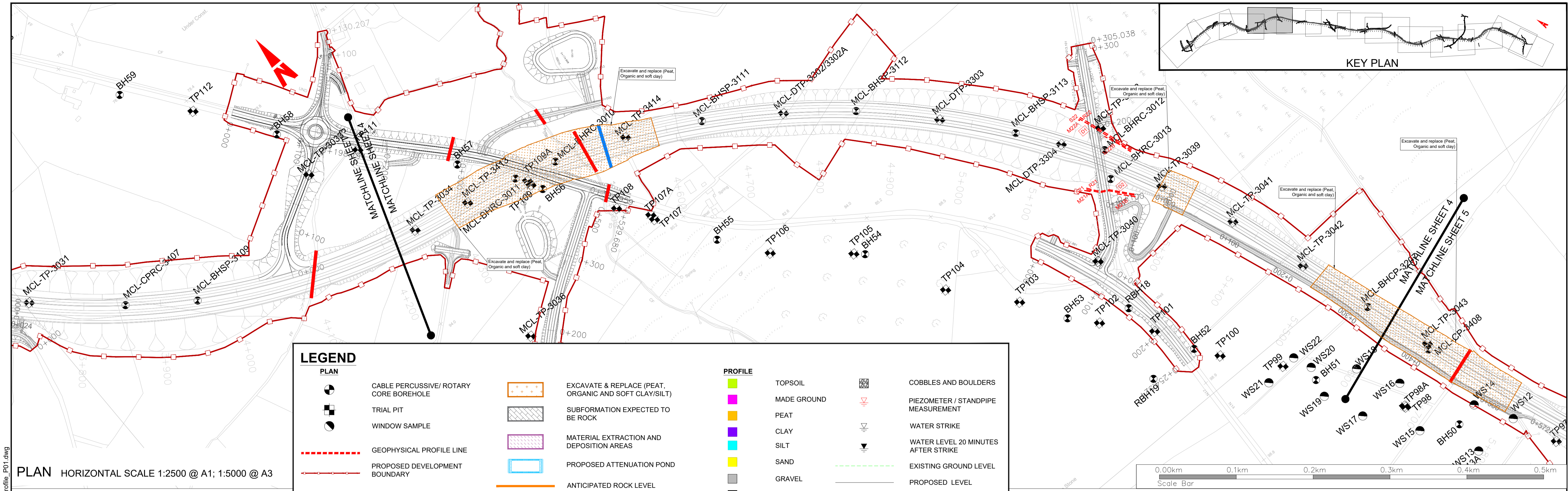


Notes  
DO NOT SCALE, use figured dimensions only. All levels are referred to Ordnance Survey Datum, Mean Head.  
This drawing is the property of Donegal County Council. It is a confidential document and must not be copied, used, or its contents divulged without prior written consent. This document should not be relied on or used in circumstances other than those for which it was originally prepared. Barry Transportation accepts no responsibility for this document to any other party other than the party by whom it was commissioned.

Rev.	Date	Drawn	Description	Ch'g'd	Appr.
P01	12.11.25	MG	ISSUE FOR PLANNING	JMM	ED

Project Title: TEN-T PRIORITY ROUTE IMPROVEMENT PROJECT DONEGAL Section 3 - N14 Manorcunningham to Lifford/Strabane/A5 Link		Status: A3
Drawing Title: GROUND INVESTIGATION & EARTHWORKS SECTION 3 MAINLINE		Rev: P01
Designed: JMM	Date: NOV 2025	EIAR Drawing Identifier:
Drawn: MG	Scale @ A1: 1:2500	EIAR DRAWING 4.62
Approved: ED	@ A3: 1:5000	File Identifier:
Checked: JMM	Sheet: 3 OF 13	TT_Y16112-BT-1A-HGT-S3-DR-CH-06120

P:\Halcrow\Bary\Y16112 - TEN-T Priority Route Improvement Project Donegal\CAD\DWG\Prelim Design\CIV\DWG\GSI\TT\_Y16112-BT-1A-HGT-S3-DR-CH-06120\_Earthworks\_Plan\_and\_Profile\_P01.dwg

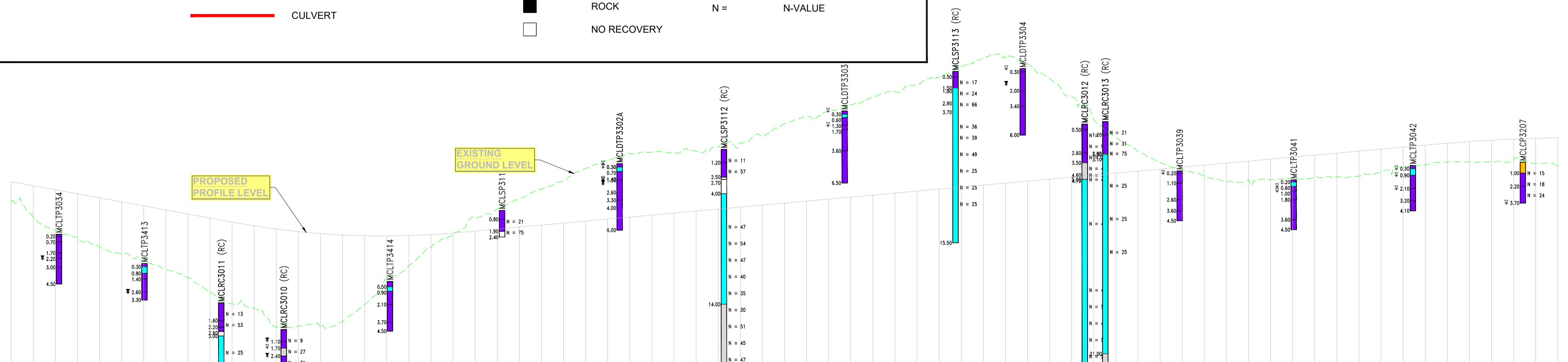


### LEGEND

PLAN	PROFILE

PLAN HORIZONTAL SCALE 1:2500 @ A1; 1:5000 @ A3

P:\Halcrow\Barr\Y16\16112-BT-1A-HGT-S3-DR-CH-06120\_Earthworks\_Plan\_and\_Profile\_P01.dwg



DATUM 70m

Chainage	Proposed Levels	Existing Levels	Slope Gradient	Ground Treatment / Special Measures	Earthworks Area
84.693 - 86.515	4+200	83.288	1V:2H	NO SPECIAL MEASURES ANTICIPATED	Fill 3
83.288 - 86.150	4+220	82.123			
85.419 - 85.419	4+260	80.640	1V:2.5H	NO SPECIAL MEASURES ANTICIPATED	Cut 4
85.063 - 84.300	4+280	79.980			
84.323 - 84.323	4+300	79.473			
83.957 - 84.340	4+320	78.589			
83.592 - 84.360	4+340	77.810			
83.228 - 84.380	4+360	76.557			
82.861 - 84.400	4+380	75.476			
82.522 - 84.420	4+400	75.073			
82.238 - 84.440	4+420	73.403			
82.003 - 84.460	4+440	73.452			
81.824 - 84.480	4+460	73.346	1V:3H	NO SPECIAL MEASURES ANTICIPATED	Excavate and replace soft soils and peat
81.689 - 84.500	4+480	73.891			
81.626 - 84.520	4+500	75.400			
81.607 - 84.540	4+520	77.822			
81.641 - 84.560	4+540	78.919			
81.729 - 84.580	4+560	80.562			
81.870 - 84.600	4+600	81.696			
82.049 - 84.620	4+620	83.271			
82.410 - 84.640	4+640	84.054			
82.591 - 84.660	4+660	84.967			
82.771 - 84.680	4+680	85.817	1V:2.5H	NO SPECIAL MEASURES ANTICIPATED	NO SPECIAL MEASURES ANTICIPATED
82.771 - 84.700	4+700	86.598			
82.952 - 84.720	4+720	87.695			
83.132 - 84.740	4+740	88.465			
83.313 - 84.760	4+760	88.080			
83.494 - 84.780	4+780	89.200			
83.674 - 84.800	4+800	89.081			
83.855 - 84.820	4+820	89.263			
84.036 - 84.840	4+840	89.650			
84.216 - 84.860	4+860	90.040			
84.397 - 84.880	4+880	90.689	RHS - 1V:2H	Excavate and replace soft soils and peat	NO SPECIAL MEASURES ANTICIPATED
84.577 - 84.900	4+900	91.734			
84.758 - 84.920	4+920	92.411			
84.939 - 84.940	4+940	92.911			
85.119 - 84.960	4+960	93.456			
85.300 - 84.980	4+980	94.116			
85.480 - 84.990	4+990	94.661			
85.661 - 85.020	5+000	95.324			
85.842 - 85+040	5+040	95.979			
86.022 - 85+060	5+060	96.937			
86.203 - 85+080	5+080	97.719	1V:3H	NO SPECIAL MEASURES ANTICIPATED	Excavate and replace soft soils and peat
86.384 - 85+100	5+100	97.780			
86.564 - 85+120	5+120	97.164			
86.745 - 85+140	5+140	95.846			
86.925 - 85+160	5+160	94.141			
87.106 - 85+180	5+180	92.132			
87.287 - 85+200	5+200	90.533			
87.467 - 85+220	5+220	89.274			
87.648 - 85+240	5+240	88.247			
87.828 - 85+260	5+260	87.598			
88.009 - 85+280	5+280	87.036	1V:2.5H	NO SPECIAL MEASURES ANTICIPATED	Excavate and replace soft soils and peat
88.190 - 85+300	5+300	86.551			
88.370 - 85+320	5+320	86.687			
88.551 - 85+340	5+340	86.694			
88.732 - 85+360	5+360	86.777			
88.912 - 85+380	5+380	86.923			
89.093 - 85+400	5+400	86.921			
89.273 - 85+420	5+420	87.023			
89.454 - 85+440	5+440	87.383			
89.635 - 85+460	5+460	87.815			
89.815 - 85+480	5+480	88.032	1V:3H	Excavate and replace soft soils and peat	Excavate and replace soft soils and peat
89.988 - 85+500	5+500	88.268			
90.196 - 85+520	5+520	88.314			
90.260 - 85+540	5+540	88.306			
90.358 - 85+560	5+560	88.439			
90.431 - 85+580	5+580	88.161			
90.480 - 85+600	5+600	87.923			

MAINLINE ALIGNMENT  
LONGITUDINAL PROFILE-CH:4200-5600  
SCALE: H 1:2500,V 1:250

CYAL50441196  
© Talte Éireann - Surveying



Notes  
DO NOT SCALE, use figured dimensions only. All levels are referred to Ordnance Survey Datum, Main Head.  
This drawing is the property of Donegal County Council. It is a confidential document and must not be copied, used, or its contents divulged without prior written consent. This document should not be relied on or used in circumstances other than those for which it was originally prepared. Barry Transportation accepts no responsibility for this document to any other party other than the party by whom it was commissioned.

Rev.	Date	Drawn	Description	Chk'd	Appr.
P01	12.11.25	MG	ISSUE FOR PLANNING	JMM	ED

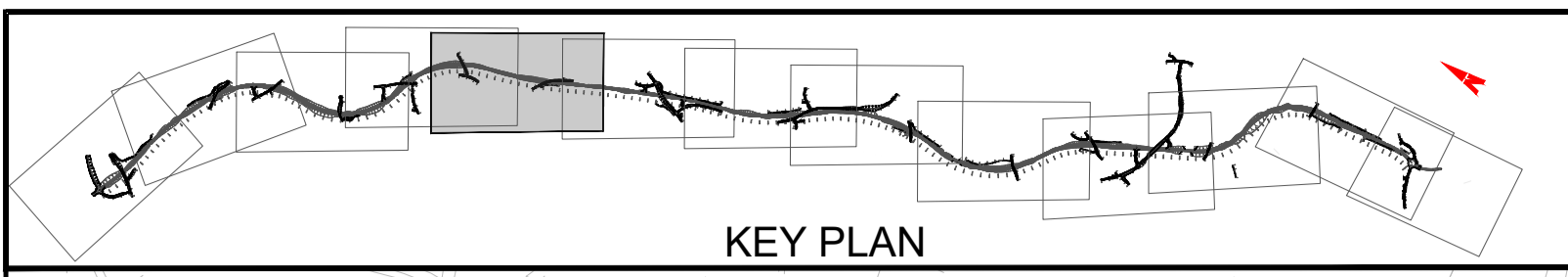
Project Title: TEN-T PRIORITY ROUTE IMPROVEMENT PROJECT DONEGAL Section 3 - N14 Manorcunningham to Lifford/Strabane/A5 Link

Drawing Title: GROUND INVESTIGATION & EARTHWORKS SECTION 3 MAINLINE

Designed: JMM Date: NOV 2025 EIA/ Drawing Identifier: Scale @ A1: 1:2500 EIA/ DRAWING 4.62 @ A3: 1:5000 File Identifier: TT\_Y16112-BT-1A-HGT-S3-DR-CH-06120

Checked: JMM Sheet: 4 OF 13

Status: A3  
Rev: P01



**LEGEND**

**PLAN**

- CABLE PERCUSSIVE/ ROTARY CORE BOREHOLE
- TRIAL PIT
- WINDOW SAMPLE
- GEOPHYSICAL PROFILE LINE
- PROPOSED DEVELOPMENT BOUNDARY

**PROFILE**

- EXCAVATE & REPLACE (PEAT, ORGANIC AND SOFT CLAY/SILT)
- SUBFORMATION EXPECTED TO BE ROCK
- MATERIAL EXTRACTION AND DEPOSITION AREAS
- PROPOSED ATTENUATION POND
- ANTICIPATED ROCK LEVEL
- CULVERT

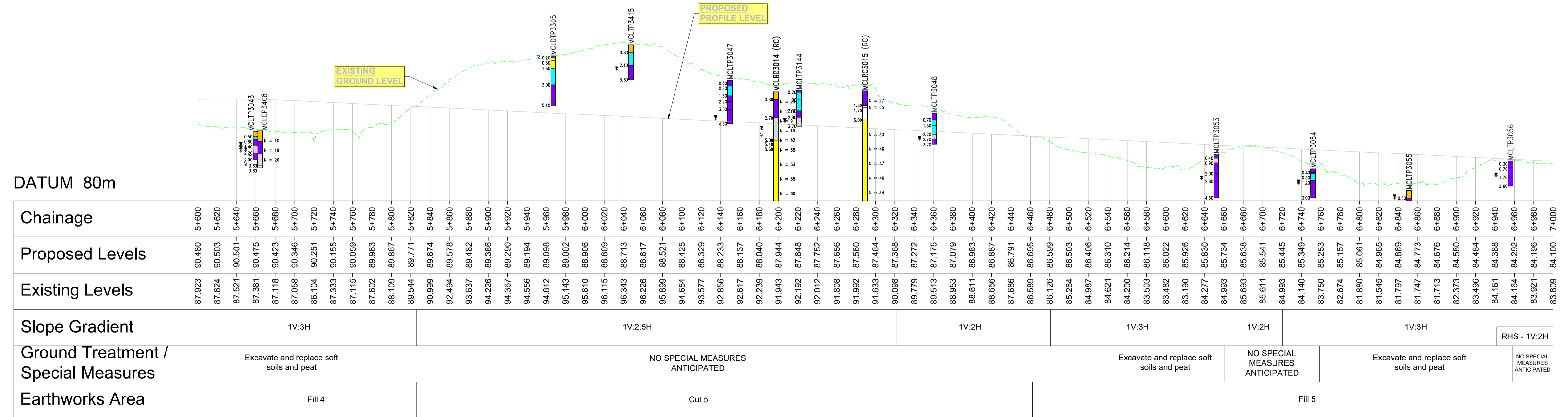
**PROFILE**

- TOPSOIL
- MADE GROUND
- PEAT
- CLAY
- SILT
- SAND
- GRAVEL
- ROCK
- NO RECOVERY

**COBBLES AND BOULDERS**

- PIEZOMETER / STANDPIPE MEASUREMENT
- WATER STRIKE
- WATER LEVEL 20 MINUTES AFTER STRIKE
- EXISTING GROUND LEVEL
- PROPOSED LEVEL
- N = N-VALUE

PLAN HORIZONTAL SCALE 1:2500 @ A1; 1:5000 @ A3



MAINLINE ALIGNMENT  
LONGITUDINAL PROFILE-CH:5600-7000  
SCALE: H 1:2500, V 1:250

CYAL50441196  
© Talte Eireann - Surveying

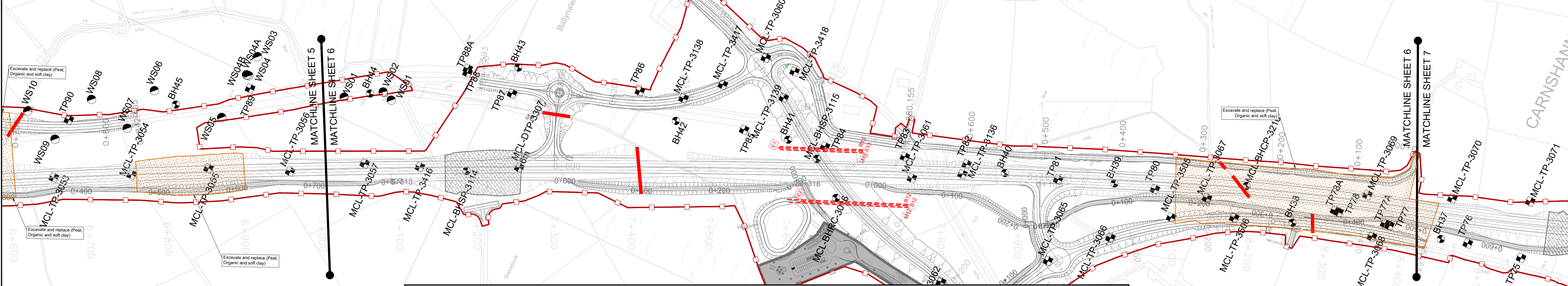
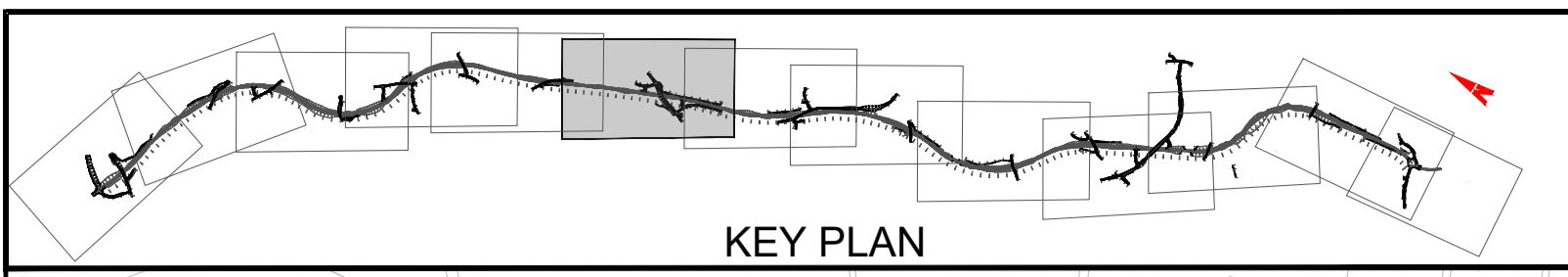


Notes  
DO NOT SCALE, use figured dimensions only. All levels are referred to Ordnance Survey Datum, Main Head.  
This drawing is the property of Donegal County Council. It is a confidential document and must not be copied, used, or its contents divulged without prior written consent. This document should not be relied on or used in circumstances other than those for which it was originally prepared. Barry Transportation accepts no responsibility for this document to any other party other than the party by whom it was commissioned.

Rev.	Date	Drawn	Description	Chkd	Appr.
P01	12.11.25	MG	ISSUE FOR PLANNING	JMM	ED

Project Title: TEN-T PRIORITY ROUTE IMPROVEMENT PROJECT DONEGAL Section 3 - N14 Manorcunningham to Lifford/Strabane/A5 Link		Status: A3	
Drawing Title: GROUND INVESTIGATION & EARTHWORKS SECTION 3 MAINLINE		Rev: P01	
Designed: JMM	Date: NOV 2025	EAIR Drawing Identifier:	
Drawn: MG	Scale @ A1: 1:2500	EAIR DRAWING: 4.62	
Approved: ED	@ A3: 1:5000	File Identifier:	TT_Y16112-BT-1A-HGT-S3-DR-CH-06120
Checked: JMM	Sheet: 5 OF 13		

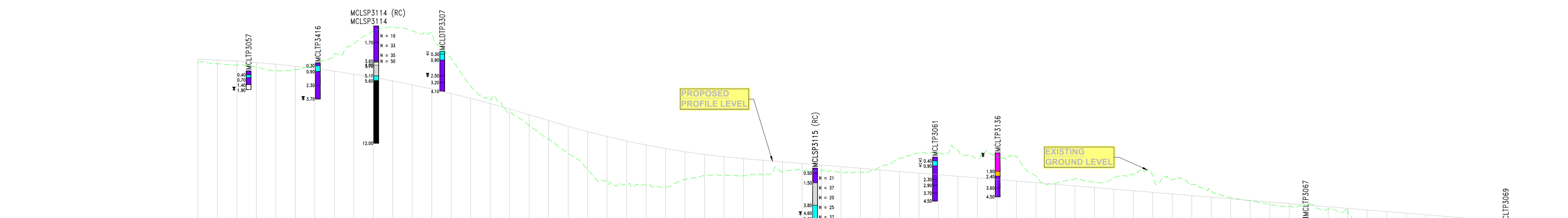
P:\Halcrow\Barry\Y16 Projects\Y16112 - TEN-T Priority Route Improvement Project Donegal\CAD\DWG\Prelim Design\CIV\DWG\SIIT\_Y16112-BT-1A-HGT-S3-DR-CH-06120\_Earthworks\_Plan\_and\_Profile\_P01.dwg



PLAN HORIZONTAL SCALE 1:2500 @ A1; 1:5000 @ A3

### LEGEND

PLAN		PROFILE	
	CABLE PERCUSSIVE/ROTARY CORE BOREHOLE		TOPSOIL
	TRIAL PIT		MADE GROUND
	WINDOW SAMPLE		PEAT
	GEOPHYSICAL PROFILE LINE		CLAY
	PROPOSED DEVELOPMENT BOUNDARY		SILT
	EXCAVATE & REPLACE (PEAT, ORGANIC AND SOFT CLAY/SILT)		SAND
	SUBFORMATION EXPECTED TO BE ROCK		GRAVEL
	MATERIAL EXTRACTION AND DEPOSITION AREAS		ROCK
	PROPOSED ATTENUATION POND		NO RECOVERY
	ANTICIPATED ROCK LEVEL		COBBLES AND BOULDERS
	CULVERT		PIEZOMETER / STANDPIPE MEASUREMENT
			WATER STRIKE
			WATER LEVEL 20 MINUTES AFTER STRIKE
			EXISTING GROUND LEVEL
			PROPOSED LEVEL
			N = N-VALUE



DATUM 65m

Chainage	Proposed Levels	Existing Levels	Slope Gradient	Ground Treatment / Special Measures	Earthworks Area
7+900	84.160	68.609	1V:3H RHS - 1V:2H	NO SPECIAL MEASURES ANTICIPATED	Fill 5
7+920	84.004	83.613			
7+940	83.894	83.499	1V:2H	Rock Excavation Required	Cut 6
7+960	83.753	83.269			
7+980	83.579	82.901	1V:2.5H	NO SPECIAL MEASURES ANTICIPATED	Fill 6
7+100	83.374	83.019			
7+120	83.136	83.637	1V:2H	Excavate and replace soft soils and peat	Fill 7
7+140	82.867	84.656			
7+160	82.565	85.649	1V:3H	NO SPECIAL MEASURES ANTICIPATED	Cut 7
7+180	82.232	86.958			
7+200	81.866	87.383	1V:2H	Excavate and replace soft soils and peat	Fill 7
7+220	81.469	87.001			
7+240	81.039	86.722	1V:3H	NO SPECIAL MEASURES ANTICIPATED	Cut 7
7+260	80.578	84.133			
7+280	80.084	81.325	LHS - 1V:2H	Excavate and replace soft soils and peat	Fill 7
7+300	79.559	79.927			
7+320	79.001	78.629	1V:2H	Excavate and replace soft soils and peat	Fill 7
7+340	78.412	77.318			
7+360	77.808	75.906	1V:3H	NO SPECIAL MEASURES ANTICIPATED	Cut 7
7+380	77.221	74.388			
7+400	76.678	72.828	LHS - 1V:2H	Excavate and replace soft soils and peat	Fill 7
7+420	76.178	71.458			
7+440	75.723	71.277	1V:2H	Excavate and replace soft soils and peat	Fill 7
7+460	75.311	71.243			
7+480	74.944	70.961	1V:3H	NO SPECIAL MEASURES ANTICIPATED	Cut 7
7+500	74.620	71.789			
7+520	74.340	72.130	LHS - 1V:2H	Excavate and replace soft soils and peat	Fill 7
7+540	74.105	72.191			
7+560	73.913	72.170	1V:2H	Excavate and replace soft soils and peat	Fill 7
7+580	73.748	72.270			
7+600	73.584	72.557	1V:3H	NO SPECIAL MEASURES ANTICIPATED	Cut 7
7+620	73.420	72.708			
7+640	73.255	72.681	LHS - 1V:2H	Excavate and replace soft soils and peat	Fill 7
7+660	73.091	72.504			
7+680	72.927	72.513	1V:2H	Excavate and replace soft soils and peat	Fill 7
7+700	72.763	73.058			
7+720	72.598	73.962	1V:3H	NO SPECIAL MEASURES ANTICIPATED	Cut 7
7+740	72.434	74.503			
7+760	72.270	74.437	LHS - 1V:2H	Excavate and replace soft soils and peat	Fill 7
7+780	72.106	74.744			
7+800	71.941	73.911	1V:2H	Excavate and replace soft soils and peat	Fill 7
7+820	71.777	74.104			
7+840	71.613	74.169	1V:3H	NO SPECIAL MEASURES ANTICIPATED	Cut 7
7+860	71.449	72.155			
7+880	71.285	71.392	LHS - 1V:2H	Excavate and replace soft soils and peat	Fill 7
7+900	71.120	71.849			
7+920	70.956	71.514	1V:2H	Excavate and replace soft soils and peat	Fill 7
7+940	70.792	71.956			
7+960	70.628	72.357	1V:3H	NO SPECIAL MEASURES ANTICIPATED	Cut 7
7+980	70.463	72.233			
8+000	70.299	71.779	LHS - 1V:2H	Excavate and replace soft soils and peat	Fill 7
8+020	70.135	71.240			
8+040	69.971	70.654	1V:2H	Excavate and replace soft soils and peat	Fill 7
8+060	69.806	69.946			
8+080	69.642	69.599	1V:3H	NO SPECIAL MEASURES ANTICIPATED	Cut 7
8+100	69.478	69.226			
8+120	69.314	69.961	LHS - 1V:2H	Excavate and replace soft soils and peat	Fill 7
8+140	69.149	69.334			
8+160	68.985	68.743	1V:2H	Excavate and replace soft soils and peat	Fill 7
8+180	68.821	66.512			
8+200	68.657	67.401	1V:3H	NO SPECIAL MEASURES ANTICIPATED	Cut 7
8+220	68.492	67.350			
8+240	68.328	67.169	LHS - 1V:2H	Excavate and replace soft soils and peat	Fill 7
8+260	68.164	67.075			
8+280	68.000	67.209	1V:2H	Excavate and replace soft soils and peat	Fill 7
8+300	67.835	67.330			
8+320	67.671	67.175	1V:3H	NO SPECIAL MEASURES ANTICIPATED	Cut 7
8+340	67.507	66.919			
8+360	67.343	66.771	LHS - 1V:2H	Excavate and replace soft soils and peat	Fill 7
8+380	67.178	66.636			
8+400	67.014	66.502			

MAINLINE ALIGNMENT  
LONGITUDINAL PROFILE-CH:7000-8400  
SCALE: H 1:2500, V 1:250

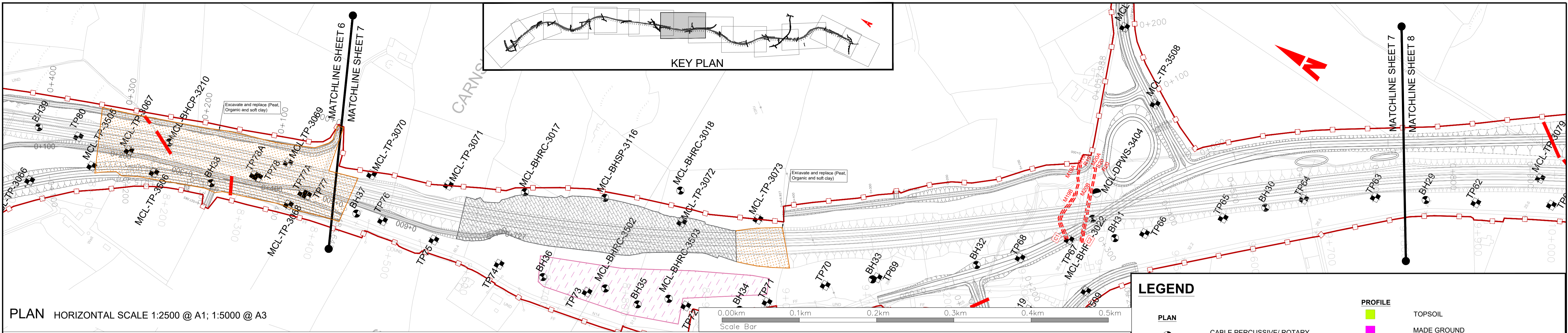
CYAL50441196  
© Talte Éireann - Surveying



Notes  
DO NOT SCALE, use figured dimensions only. All levels are referred to Ordnance Survey Datum, Mean Head.  
This drawing is the property of Donegal County Council. It is a confidential document and must not be copied, used, or its contents divulged without prior written consent. This document should not be relied on or used in circumstances other than those for which it was originally prepared. Barry Transportation accepts no responsibility for this document to any other party other than the party by whom it was commissioned.

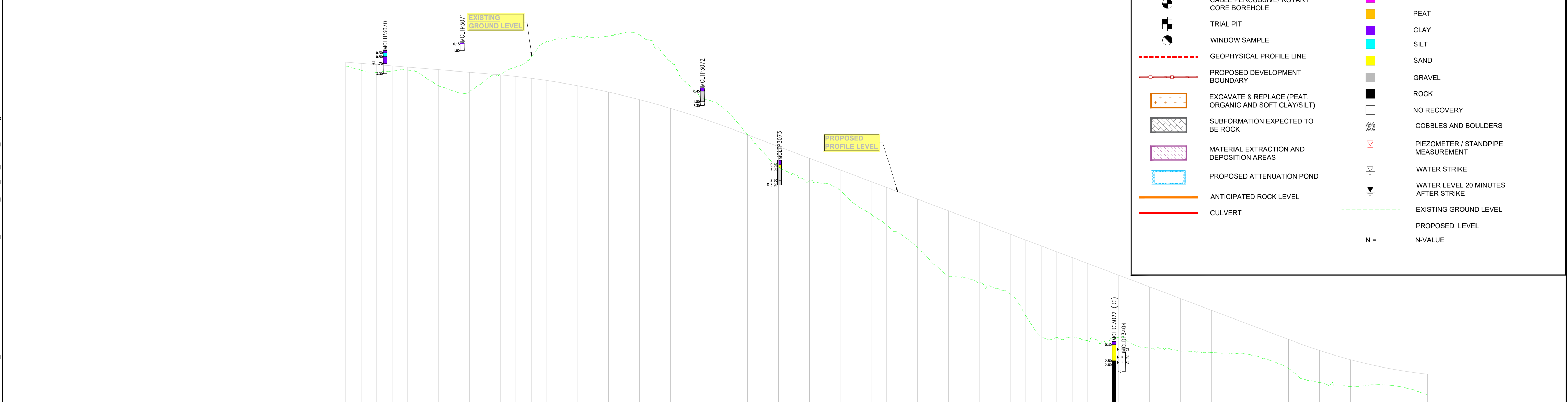
Rev.	Date	Drawn	Description	Ch'd	Appr.
P01	12.11.25	MG	ISSUE FOR PLANNING	JMM	ED

Project Title: TEN-T PRIORITY ROUTE IMPROVEMENT PROJECT DONEGAL Section 3 - N14 Manorunningham to Lifford/Strabane/A5 Link		Status: A3
Drawing Title: GROUND INVESTIGATION & EARTHWORKS SECTION 3 MAINLINE		Rev: P01
Designed: JMM	Date: NOV 2025	EIAR Drawing Identifier:
Drawn: MG	Scale @ A1: 1:2500	Scale @ A3: 1:5000
Approved: ED	File Identifier: TT_Y16112-BT-1A-HGT-S3-DR-CH-06120	Checked: JMM
Sheet: 6 OF 13		



### LEGEND

PLAN	PROFILE
	TOPSOIL
	MADE GROUND
	PEAT
	CLAY
	SILT
	SAND
	GRAVEL
	ROCK
	NO RECOVERY
	COBBLES AND BOULDERS
	PIEZOMETER / STANDPIPE MEASUREMENT
	WATER STRIKE
	WATER LEVEL 20 MINUTES AFTER STRIKE
	EXISTING GROUND LEVEL
	PROPOSED LEVEL
	N-VALUE



DATUM 20m

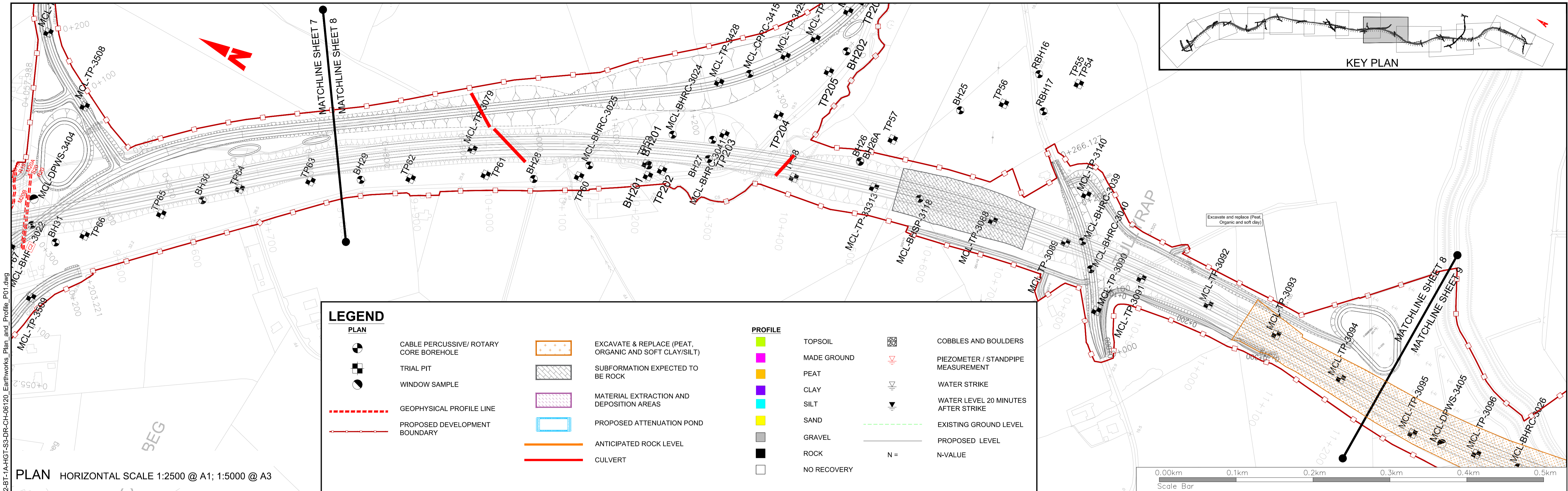
Chainage	Proposed Levels	Existing Levels	Slope Gradient	Ground Treatment / Special Measures	Earthworks Area
66.502	67.014	67.014	1V:3H	Excavate and replace soft soils and peat	Fill 7
65.934	66.850	65.934			
65.674	66.686	65.674	1V:2.5H	NO SPECIAL MEASURES ANTICIPATED	Fill 7
65.861	66.521	65.861			
65.976	66.357	65.976	1V:2.5H	Rock Excavation Required	Cut 8
63.995	66.029	63.995			
63.250	65.865	63.250	RHS - 1V:2H	Excavate and replace soft soils and peat	Fill 8
63.121	65.700	63.121			
64.507	65.536	64.507	1V:3H	NO SPECIAL MEASURES ANTICIPATED	Fill 8
65.495	65.364	65.495			
66.382	65.156	66.382	1V:3H	NO SPECIAL MEASURES ANTICIPATED	Fill 8
67.655	64.912	67.655			
69.686	64.630	69.686	1V:2H	NO SPECIAL MEASURES ANTICIPATED	Fill 8
70.100	64.310	70.100			
70.322	63.954	70.322	1V:3H	NO SPECIAL MEASURES ANTICIPATED	Fill 8
70.188	63.560	70.188			
70.421	63.129	70.421	1V:2H	NO SPECIAL MEASURES ANTICIPATED	Fill 8
70.812	62.661	70.812			
70.544	62.156	70.544	1V:3H	NO SPECIAL MEASURES ANTICIPATED	Fill 8
68.890	61.613	68.890			
67.082	61.033	67.082	1V:2H	NO SPECIAL MEASURES ANTICIPATED	Fill 8
64.340	60.416	64.340			
62.517	59.762	62.517	1V:3H	NO SPECIAL MEASURES ANTICIPATED	Fill 8
61.719	59.070	61.719			
59.990	58.341	59.990	1V:2H	NO SPECIAL MEASURES ANTICIPATED	Fill 8
57.623	57.586	57.623			
55.426	56.830	55.426	1V:3H	NO SPECIAL MEASURES ANTICIPATED	Fill 8
53.547	56.074	53.547			
52.495	55.317	52.495	1V:2H	NO SPECIAL MEASURES ANTICIPATED	Fill 8
51.707	54.561	51.707			
51.332	53.805	51.332	1V:3H	NO SPECIAL MEASURES ANTICIPATED	Fill 8
50.387	53.049	50.387			
48.524	52.292	48.524	1V:2H	NO SPECIAL MEASURES ANTICIPATED	Fill 8
47.334	51.536	47.334			
45.910	50.780	45.910	1V:3H	NO SPECIAL MEASURES ANTICIPATED	Fill 8
44.577	50.024	44.577			
42.961	49.267	42.961	1V:2H	NO SPECIAL MEASURES ANTICIPATED	Fill 8
40.940	48.511	40.940			
39.326	47.755	39.326	1V:3H	NO SPECIAL MEASURES ANTICIPATED	Fill 8
38.419	46.242	38.419			
37.765	45.486	37.765	1V:2H	NO SPECIAL MEASURES ANTICIPATED	Fill 8
36.991	44.730	36.991			
34.169	43.973	34.169	1V:3H	NO SPECIAL MEASURES ANTICIPATED	Fill 8
31.417	43.217	31.417			
31.384	42.461	31.384	1V:2H	NO SPECIAL MEASURES ANTICIPATED	Fill 8
31.438	41.705	31.438			
30.980	40.948	30.980	1V:3H	NO SPECIAL MEASURES ANTICIPATED	Fill 8
30.952	40.192	30.952			
31.342	39.436	31.342	1V:2H	NO SPECIAL MEASURES ANTICIPATED	Fill 8
30.438	38.680	30.438			
29.910	37.923	29.910	1V:3H	NO SPECIAL MEASURES ANTICIPATED	Fill 8
29.873	37.167	29.873			
29.633	36.411	29.633	1V:2H	NO SPECIAL MEASURES ANTICIPATED	Fill 8
29.505	35.655	29.505			
29.420	34.898	29.420	1V:3H	NO SPECIAL MEASURES ANTICIPATED	Fill 8
29.318	34.142	29.318			
29.242	33.386	29.242	1V:2H	NO SPECIAL MEASURES ANTICIPATED	Fill 8
28.952	32.630	28.952			
28.226	31.873	28.226	1V:3H	NO SPECIAL MEASURES ANTICIPATED	Fill 8
27.365	31.117	27.365			
25.965	30.373	25.965	1V:2H	NO SPECIAL MEASURES ANTICIPATED	Fill 8
25.561	29.685	25.561			
25.070	29.080	25.070	1V:3H	NO SPECIAL MEASURES ANTICIPATED	Fill 8
25.018	28.497	25.018			
25.119	27.995	25.119	1V:2H	NO SPECIAL MEASURES ANTICIPATED	Fill 8
25.224	27.555	25.224			
25.067	27.178	25.067	1V:3H	NO SPECIAL MEASURES ANTICIPATED	Fill 8
24.662	26.862	24.662			
23.929	26.608	23.929			

MAINLINE ALIGNMENT  
LONGITUDINAL PROFILE-CH:8400-9800  
SCALE: H 1:2500,V 1:250

CYAL50441196  
© Talte Éireann - Surveying

			<p>Notes</p> <p>DO NOT SCALE, use figured dimensions only. All levels are referred to Ordnance Survey Datum, Mean Head.</p> <p>This drawing is the property of Donegal County Council. It is a confidential document and must not be copied, used, or its contents divulged without prior written consent. This document should not be relied on or used in circumstances other than those for which it was originally prepared. Barry Transportation accepts no responsibility for this document to any other party other than the party by whom it was commissioned.</p>	<table border="1"> <thead> <tr> <th>Rev.</th> <th>Date</th> <th>Drawn</th> <th>Description</th> <th>Chkd</th> <th>Appr.</th> </tr> </thead> <tbody> <tr> <td>P01</td> <td>12.11.25</td> <td>MG</td> <td>ISSUE FOR PLANNING</td> <td>JMM</td> <td>ED</td> </tr> </tbody> </table>	Rev.	Date	Drawn	Description	Chkd	Appr.	P01	12.11.25	MG	ISSUE FOR PLANNING	JMM	ED	<p>Project Title: TEN-T PRIORITY ROUTE IMPROVEMENT PROJECT DONEGAL Section 3 - N14 Manorcunningham to Lifford/Strabane/A5 Link</p> <p>Drawing Title: GROUND INVESTIGATION &amp; EARTHWORKS SECTION 3 MAINLINE</p> <p>Designed: JMM Date: NOV 2025 Drawn: MG Scale @ A1: 1:2500 Approved: ED @ A3: 1:5000 Checked: JMM Sheet: 7 OF 13</p> <p>EIAR Drawing Identifier: EIAR Drawing 4.62 File Identifier: TT_Y16112-BT-1A-HGT-S3-DR-CH-06120</p>	<p>Status: A3</p> <p>Rev: P01</p>
				Rev.	Date	Drawn	Description	Chkd	Appr.									
P01	12.11.25	MG	ISSUE FOR PLANNING	JMM	ED													

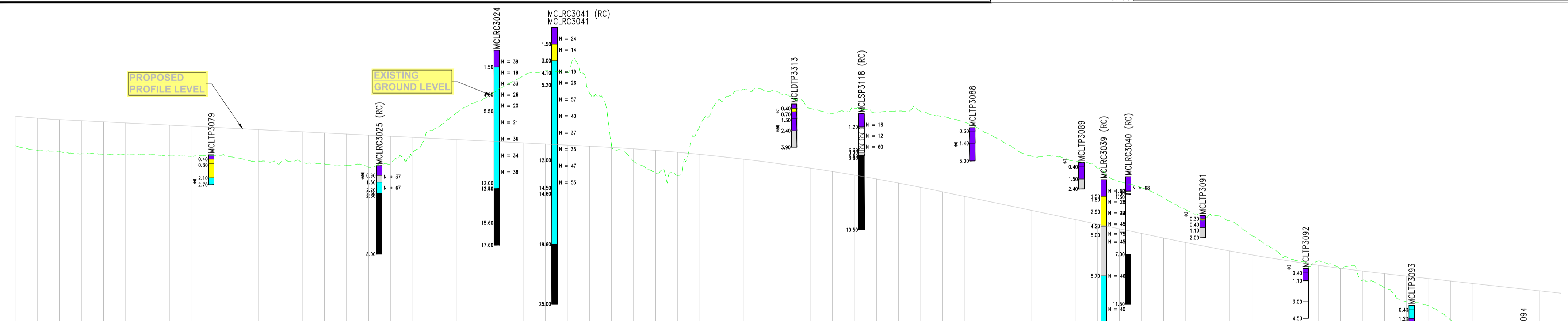
P:\Halcrow\Bary\16112 - TEN-T Priority Route Improvement Project Donegal\Civil\DWG\Gantt\_Y16112-BT-1A-HGT-S3-DR-CH-06120\_Earthworks\_Plan\_and\_Profile\_P01.dwg



**LEGEND**

PLAN		PROFILE	
	CABLE PERCUSSIVE/ ROTARY CORE BOREHOLE		TOPSOIL
	TRIAL PIT		MADE GROUND
	WINDOW SAMPLE		PEAT
	GEOPHYSICAL PROFILE LINE		CLAY
	PROPOSED DEVELOPMENT BOUNDARY		SILT
	EXCAVATE & REPLACE (PEAT, ORGANIC AND SOFT CLAY/SILT)		SAND
	SUBFORMATION EXPECTED TO BE ROCK		GRAVEL
	MATERIAL EXTRACTION AND DEPOSITION AREAS		ROCK
	PROPOSED ATTENUATION POND		NO RECOVERY
	ANTICIPATED ROCK LEVEL		COBBLES AND BOULDERS
	CULVERT		PIEZOMETER / STANDPIPE MEASUREMENT
			WATER STRIKE
			WATER LEVEL 20 MINUTES AFTER STRIKE
			EXISTING GROUND LEVEL
			PROPOSED LEVEL
			N = N-VALUE

PLAN HORIZONTAL SCALE 1:2500 @ A1; 1:5000 @ A3



DATUM 4m

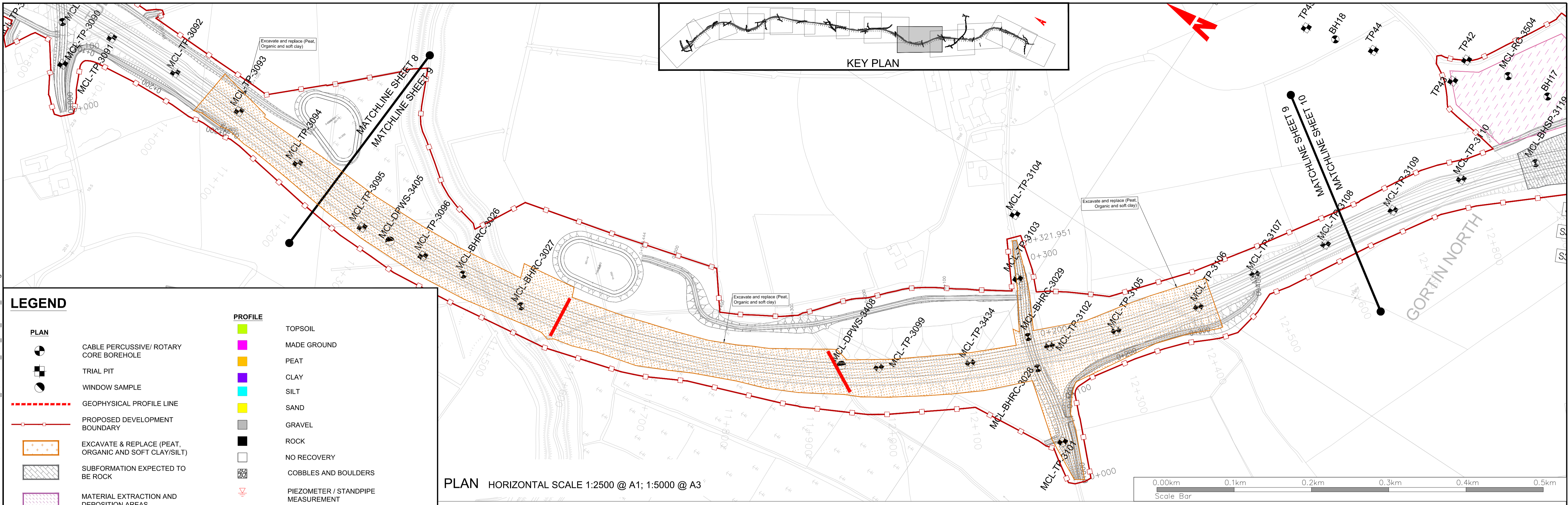
Chainage	Proposed Levels	Existing Levels	Slope Gradient	Ground Treatment / Special Measures	Earthworks Area
9+800	26.608	23.929	1V:3H	NO SPECIAL MEASURES ANTICIPATED	Fill 8
9+820	26.416	23.493			
9+840	26.286	23.381	LHS - 1V:2.5H	Rock Excavation Required	Cut 9
9+860	26.186	23.194			
9+880	26.086	23.177	1V:3H	NO SPECIAL MEASURES ANTICIPATED	Fill 9
9+900	25.986	23.152			
9+920	25.886	23.091	1V:2.5H	NO SPECIAL MEASURES ANTICIPATED	Fill 9
9+940	25.786	23.012			
9+960	25.686	22.979	1V:2H	Excavate and replace soft soils and peat	Fill 9
9+980	25.586	23.057			
10+000	25.486	22.838	1V:3H	NO SPECIAL MEASURES ANTICIPATED	Fill 9
10+020	25.386	22.531			
10+040	25.286	22.365	1V:2H	NO SPECIAL MEASURES ANTICIPATED	Fill 9
10+060	25.186	22.394			
10+080	25.086	22.291	1V:3H	NO SPECIAL MEASURES ANTICIPATED	Fill 9
10+100	24.986	22.138			
10+120	24.886	21.975	1V:2H	NO SPECIAL MEASURES ANTICIPATED	Fill 9
10+140	24.786	22.275			
10+160	24.686	23.153	1V:3H	NO SPECIAL MEASURES ANTICIPATED	Fill 9
10+180	24.586	25.453			
10+200	24.486	26.914	1V:2.5H	NO SPECIAL MEASURES ANTICIPATED	Fill 9
10+220	24.386	27.952			
10+240	24.286	29.148	1V:3H	NO SPECIAL MEASURES ANTICIPATED	Fill 9
10+260	24.186	30.224			
10+280	24.086	30.700	1V:2.5H	NO SPECIAL MEASURES ANTICIPATED	Fill 9
10+300	23.986	30.614			
10+320	23.886	28.708	1V:3H	NO SPECIAL MEASURES ANTICIPATED	Fill 9
10+340	23.777	23.987			
10+360	23.648	22.521	1V:2.5H	NO SPECIAL MEASURES ANTICIPATED	Fill 9
10+380	23.500	21.451			
10+400	23.331	21.229	1V:3H	NO SPECIAL MEASURES ANTICIPATED	Fill 9
10+420	23.143	25.697			
10+440	22.934	27.938	1V:2.5H	NO SPECIAL MEASURES ANTICIPATED	Fill 9
10+460	22.706	28.983			
10+480	22.459	28.852	1V:3H	NO SPECIAL MEASURES ANTICIPATED	Fill 9
10+500	22.191	28.517			
10+520	21.903	27.297	1V:2.5H	NO SPECIAL MEASURES ANTICIPATED	Fill 9
10+540	21.596	26.853			
10+560	21.289	27.315	1V:3H	NO SPECIAL MEASURES ANTICIPATED	Fill 9
10+580	20.921	27.020			
10+600	20.555	27.085	1V:2.5H	NO SPECIAL MEASURES ANTICIPATED	Fill 9
10+620	20.188	27.033			
10+640	19.761	26.559	1V:3H	NO SPECIAL MEASURES ANTICIPATED	Fill 9
10+660	19.344	26.053			
10+680	18.926	26.053	1V:2.5H	NO SPECIAL MEASURES ANTICIPATED	Fill 9
10+700	18.508	25.068			
10+720	18.091	23.995	1V:3H	NO SPECIAL MEASURES ANTICIPATED	Fill 9
10+740	17.673	23.002			
10+760	17.256	22.975	1V:2.5H	NO SPECIAL MEASURES ANTICIPATED	Fill 9
10+780	16.838	22.500			
10+800	16.421	21.845	1V:3H	NO SPECIAL MEASURES ANTICIPATED	Fill 9
10+820	16.003	20.682			
10+840	15.586	19.209	1V:2.5H	NO SPECIAL MEASURES ANTICIPATED	Fill 9
10+860	15.175	18.146			
10+880	14.764	17.528	1V:3H	NO SPECIAL MEASURES ANTICIPATED	Fill 9
10+900	14.412	17.155			
10+920	14.080	15.792	1V:2.5H	NO SPECIAL MEASURES ANTICIPATED	Fill 9
10+940	13.728	14.592			
10+960	13.415	13.570	1V:3H	NO SPECIAL MEASURES ANTICIPATED	Fill 9
10+980	13.122	13.508			
11+000	12.848	12.752	1V:2.5H	NO SPECIAL MEASURES ANTICIPATED	Fill 9
11+020	12.594	11.753			
11+040	12.359	11.088	1V:3H	NO SPECIAL MEASURES ANTICIPATED	Fill 9
11+060	12.137	9.882			
11+080	11.877	9.430	1V:2.5H	NO SPECIAL MEASURES ANTICIPATED	Fill 9
11+100	11.617	8.169			
11+120	11.357	7.097	1V:3H	NO SPECIAL MEASURES ANTICIPATED	Fill 9
11+140	11.097	6.376			
11+160	10.837	5.838	1V:2.5H	NO SPECIAL MEASURES ANTICIPATED	Fill 9
11+180	10.577	5.110			
11+200	10.317	4.637			

MAINLINE ALIGNMENT  
LONGITUDINAL PROFILE-CH:9800-11200  
SCALE: H 1:2500, V 1:250

\legis.racine.localbu\_meris\BBB\01\_P\Projects\Dublin\Projects\Halcrow\Barry\16 Projects\Y16112-BT-1A-HGT-S3-DR-CH-06120\_Earthworks\_Plan\_and\_Profile\_P01.dwg  
 CYAL50441196 © Talte Éireann - Surveying

			<p>Notes</p> <p>DO NOT SCALE, use figured dimensions only. All levels are referred to Ordnance Survey Datum, Main Head.</p> <p>This drawing is the property of Donegal County Council. It is a confidential document and must not be copied, used, or its contents divulged without prior written consent. This document should not be relied on or used in circumstances other than those for which it was originally prepared. Barry Transportation accepts no responsibility for this document to any other party other than the party by whom it was commissioned.</p>	<table border="1"> <thead> <tr> <th>Rev.</th> <th>Date</th> <th>Drawn</th> <th>Description</th> <th>Chk'd</th> <th>Appr.</th> </tr> </thead> <tbody> <tr> <td>P01</td> <td>12.11.25</td> <td>MG</td> <td>ISSUE FOR PLANNING</td> <td>JMM</td> <td>ED</td> </tr> </tbody> </table>	Rev.	Date	Drawn	Description	Chk'd	Appr.	P01	12.11.25	MG	ISSUE FOR PLANNING	JMM	ED	<p>Project Title: TEN-T PRIORITY ROUTE IMPROVEMENT PROJECT DONEGAL Section 3 - N14 Manorcunningham to Lifford/Strabane/A5 Link</p> <p>Drawing Title: GROUND INVESTIGATION &amp; EARTHWORKS SECTION 3 MAINLINE</p> <p>Designed: JMM Date: NOV 2025 EIA Ref: Drawing Identifier:</p> <p>Drawn: MG Scale @ A1: 1:2500 EIA Ref: DRAWING 4.62</p> <p>Approved: ED @ A3: 1:5000 File Identifier:</p> <p>Checked: JMM Sheet: 8 OF 13 TT_Y16112-BT-1A-HGT-S3-DR-CH-06120</p>	<p>Status: A3</p> <p>Rev: P01</p>
Rev.	Date	Drawn	Description	Chk'd	Appr.													
P01	12.11.25	MG	ISSUE FOR PLANNING	JMM	ED													

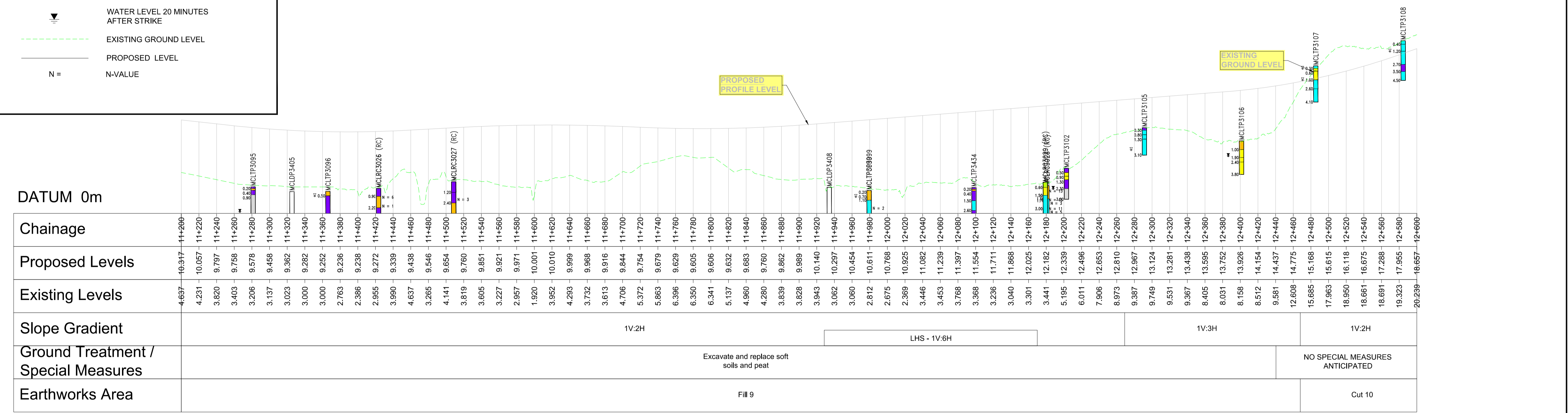
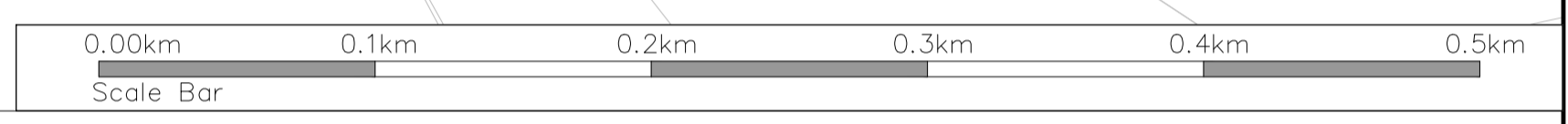
\gis\racine\localbu\01\_P\Projects\Dublin\Projects\Haltrow\Barr\Y16\Projects\Y16112-BT-1A-HGT-S3-DR-CH-06120\_Earthworks\_Plan\_and\_Profile\_P01.dwg  
 \gis\racine\localbu\01\_P\Projects\Dublin\Projects\Haltrow\Barr\Y16\Projects\Y16112-BT-1A-HGT-S3-DR-CH-06120\_Earthworks\_Plan\_and\_Profile\_P01.dwg



### LEGEND

PLAN	PROFILE

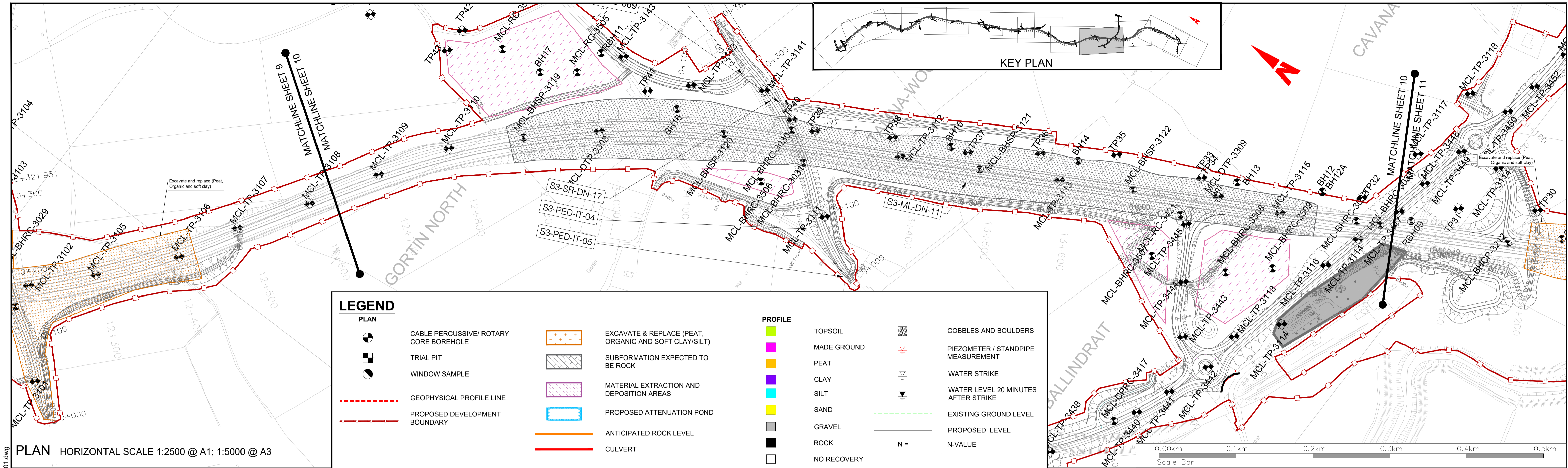
PLAN HORIZONTAL SCALE 1:2500 @ A1; 1:5000 @ A3



MAINLINE ALIGNMENT  
LONGITUDINAL PROFILE-CH:11200-12600  
SCALE: H 1:2500,V 1:250

CYAL50441196  
© Talte Éireann - Surveying

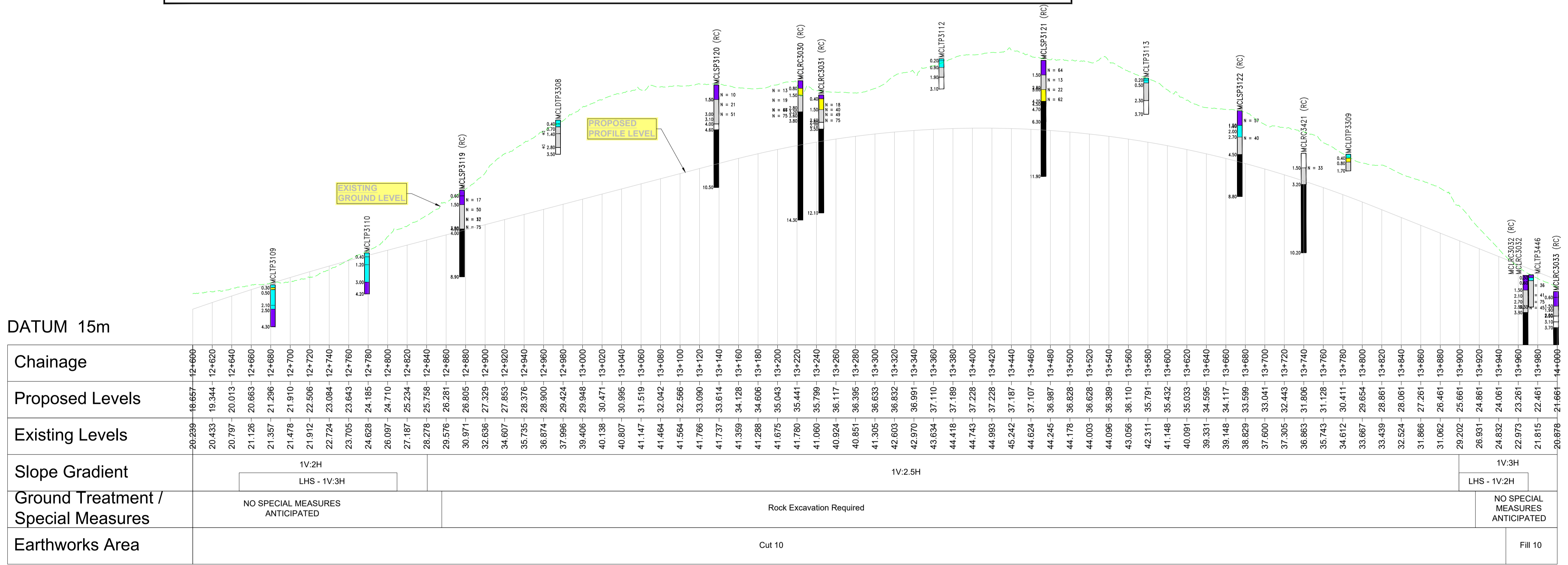
			<p>Notes</p> <p>DO NOT SCALE, use figured dimensions only. All levels are referred to Ordnance Survey Datum, Mean Head.</p> <p>This drawing is the property of Donegal County Council. It is a confidential document and must not be copied, used, or its contents divulged without prior written consent. This document should not be relied on or used in circumstances other than those for which it was originally prepared. Barry Transportation accepts no responsibility for this document to any other party other than the party by whom it was commissioned.</p>	<table border="1"> <thead> <tr> <th>Rev.</th> <th>Date</th> <th>Drawn</th> <th>Description</th> <th>Chkd</th> <th>Appr.</th> </tr> </thead> <tbody> <tr> <td>P01</td> <td>12.11.25</td> <td>MG</td> <td>ISSUE FOR PLANNING</td> <td>JMM</td> <td>ED</td> </tr> </tbody> </table>	Rev.	Date	Drawn	Description	Chkd	Appr.	P01	12.11.25	MG	ISSUE FOR PLANNING	JMM	ED	<p>Project Title: TEN-T PRIORITY ROUTE IMPROVEMENT PROJECT DONEGAL Section 3 - N14 Manorcunningham to Lifford/Strabane/A5 Link</p> <p>Drawing Title: GROUND INVESTIGATION &amp; EARTHWORKS SECTION 3 MAINLINE</p> <p>Designed: JMM Date: NOV 2025 EIA Drawing Identifier: MG Scale @ A1: 1:2500 Scale @ A3: 1:5000 File Identifier: ED Approved: ED @ A3: 1:5000 Sheet: 9 OF 13</p> <p>Status: A3</p> <p>Rev: P01</p>
Rev.	Date	Drawn	Description	Chkd	Appr.												
P01	12.11.25	MG	ISSUE FOR PLANNING	JMM	ED												



### LEGEND

PLAN		PROFILE	
	CABLE PERCUSSIVE/ ROTARY CORE BOREHOLE		TOPSOIL
	TRIAL PIT		MADE GROUND
	WINDOW SAMPLE		PEAT
	GEOPHYSICAL PROFILE LINE		CLAY
	PROPOSED DEVELOPMENT BOUNDARY		SILT
	EXCAVATE & REPLACE (PEAT, ORGANIC AND SOFT CLAY/SILT)		SAND
	SUBFORMATION EXPECTED TO BE ROCK		GRAVEL
	MATERIAL EXTRACTION AND DEPOSITION AREAS		ROCK
	PROPOSED ATTENUATION POND		NO RECOVERY
	ANTICIPATED ROCK LEVEL		COBBLES AND BOULDERS
	CULVERT		PIEZOMETER / STANDPIPE MEASUREMENT
			WATER STRIKE
			WATER LEVEL 20 MINUTES AFTER STRIKE
			EXISTING GROUND LEVEL
			PROPOSED LEVEL
			N-VALUE

PLAN HORIZONTAL SCALE 1:2500 @ A1; 1:5000 @ A3



MAINLINE ALIGNMENT  
LONGITUDINAL PROFILE-CH:12600-14000  
SCALE: H 1:2500,V 1:250

CYAL50441196  
© Talte Éireann - Surveying

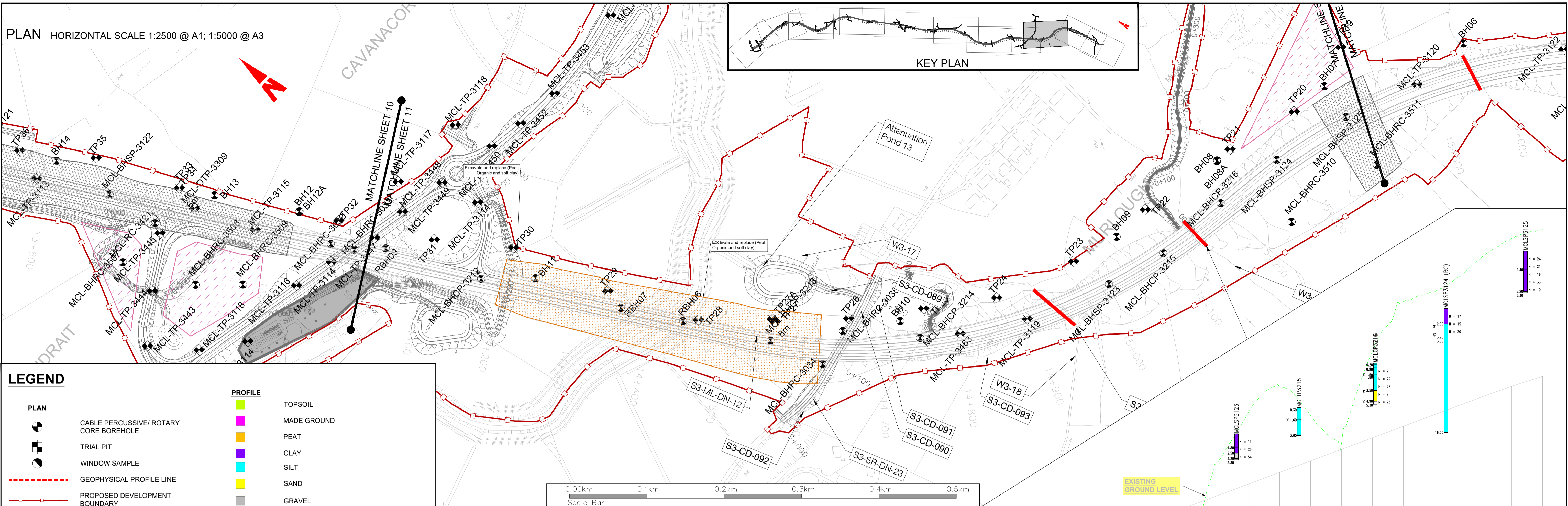


Notes  
DO NOT SCALE, use figured dimensions only. All levels are referred to Ordnance Survey Datum, Main Head.  
This drawing is the property of Donegal County Council. It is a confidential document and must not be copied, used, or its contents divulged without prior written consent. This document should not be relied on or used in circumstances other than those for which it was originally prepared. Barry Transportation accepts no responsibility for this document to any other party other than the party by whom it was commissioned.

Rev.	Date	Drawn	Description	Chk'd	Appr.
P01	12.11.25	MG	ISSUE FOR PLANNING	JMM	ED

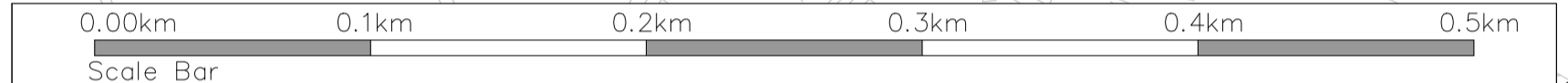
Project Title: TEN-T PRIORITY ROUTE IMPROVEMENT PROJECT DONEGAL Section 3 - N14 Manorcunningham to Lifford/Strabane/A5 Link		Status: A3
Drawing Title: GROUND INVESTIGATION & EARTHWORKS SECTION 3 MAINLINE		Rev: P01
Designed: JMM	Date: NOV 2025	EIAR Drawing Identifier:
Drawn: MG	Scale @ A1: 1:2500	EIAR DRAWING 4.62
Approved: ED	@ A3: 1:5000	File Identifier:
Checked: JMM	Sheet: 10 OF 13	TT_Y16112-BT-1A-HGT-S3-DR-CH-06120

PLAN HORIZONTAL SCALE 1:2500 @ A1; 1:5000 @ A3



### LEGEND

<b>PLAN</b>	<b>PROFILE</b>
CABLE PERCUSSIVE/ ROTARY CORE BOREHOLE	TOPSOIL
TRIAL PIT	MADE GROUND
WINDOW SAMPLE	PEAT
GEOPHYSICAL PROFILE LINE	CLAY
PROPOSED DEVELOPMENT BOUNDARY	SILT
EXCAVATE & REPLACE (PEAT, ORGANIC AND SOFT CLAY/SILT)	SAND
SUBFORMATION EXPECTED TO BE ROCK	GRAVEL
MATERIAL EXTRACTION AND DEPOSITION AREAS	ROCK
PROPOSED ATTENUATION POND	NO RECOVERY
ANTICIPATED ROCK LEVEL	COBBLES AND BOULDERS
CULVERT	PIEZOMETER / STANDPIPE MEASUREMENT
	WATER STRIKE
	WATER LEVEL 20 MINUTES AFTER STRIKE
	EXISTING GROUND LEVEL
	PROPOSED LEVEL
	<b>N =</b> N-VALUE



DATUM 0m

Chainage	Proposed Levels	Existing Levels	Slope Gradient	Ground Treatment / Special Measures	Earthworks Area
14+000	21.661	20.876	LHS - 1V:3H	NO SPECIAL MEASURES ANTICIPATED	Fill 10
14+020	20.861	19.323			
14+040	20.081	18.472	1V:2H	Excavate and replace soft soils and peat	Fill 10
14+060	19.261	16.858			
14+080	18.461	17.431	1V:3H	NO SPECIAL MEASURES ANTICIPATED	Cut 11
14+100	17.661	15.736			
14+120	16.864	14.563	1V:2.5H	NO SPECIAL MEASURES ANTICIPATED	Cut 11
14+140	16.137	12.757			
14+160	15.513	10.678			
14+180	14.990	8.684			
14+200	14.570	5.134			
14+220	14.252	2.899			
14+240	14.035	2.512			
14+260	13.921	2.474			
14+280	13.909	2.169			
14+300	13.999	2.104			
14+320	14.192	2.234			
14+340	14.486	2.059			
14+360	14.882	2.264			
14+380	15.354	4.600			
14+400	15.830	1.347			
14+420	16.306	1.410			
14+440	16.783	4.774			
14+460	17.259	2.748			
14+480	17.735	2.509			
14+500	18.211	2.480			
14+520	18.687	2.621			
14+540	19.163	2.790			
14+560	19.639	3.092			
14+580	20.115	3.497			
14+600	20.591	4.080			
14+620	21.067	4.934			
14+640	21.555	6.326			
14+660	22.070	7.944			
14+680	22.613	11.572			
14+700	23.182	17.414			
14+720	23.778	21.828			
14+740	24.401	24.391			
14+760	25.051	25.730			
14+780	25.728	25.072			
14+800	26.432	24.041			
14+820	27.163	22.693			
14+840	27.909	23.753			
14+860	28.655	25.674			
14+880	29.401	27.492			
14+900	30.147	28.406			
14+920	30.893	27.411			
14+940	31.639	25.794			
14+960	32.385	31.114			
14+980	33.131	37.490			
15+000	33.877	40.598			
15+020	34.623	43.911			
15+040	35.369	46.427			
15+060	36.115	47.157			
15+080	36.861	46.064			
15+100	37.607	43.480			
15+120	38.353	41.183			
15+140	39.099	39.625			
15+160	39.845	46.511			
15+180	40.591	51.796			
15+200	41.337	55.150			
15+220	42.083	58.214			
15+240	42.829	58.959			
15+260	43.575	59.457			
15+280	44.321	60.609			
15+300	45.067	62.076			
15+320	45.813	63.777			
15+340	46.541	65.205			
15+360	47.234	66.343			
15+380	47.893	67.021			
15+400	48.516	67.473			

MAINLINE ALIGNMENT  
LONGITUDINAL PROFILE-CH:14000-15400  
SCALE: H 1:2500,V 1:250

CYAL50441196  
© Talte Éireann - Surveying



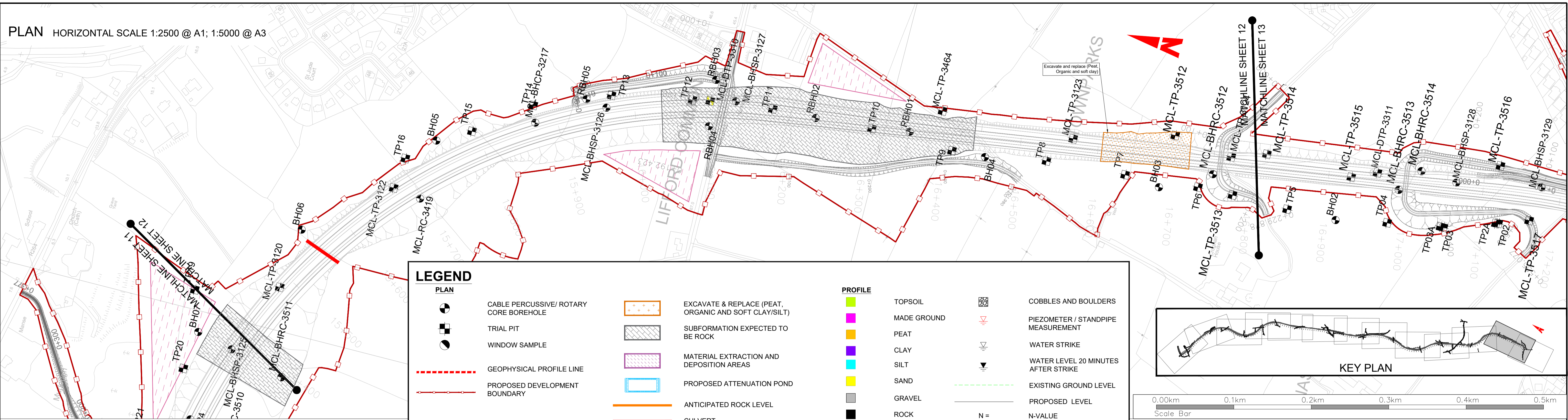
Notes  
DO NOT SCALE, use figured dimensions only. All levels are referred to Ordnance Survey Datum, Main Head.  
This drawing is the property of Donegal County Council. It is a confidential document and must not be copied, used, or its contents divulged without prior written consent. This document should not be relied on or used in circumstances other than those for which it was originally prepared. Barry Transportation accepts no responsibility for this document to any other party other than the party by whom it was commissioned.

Rev.	Date	Drawn	Description	Chk'd	Appr.
P01	12.11.25	MG	ISSUE FOR PLANNING	JMM	ED

Project Title: TEN-T PRIORITY ROUTE IMPROVEMENT PROJECT DONEGAL Section 3 - N14 Manorcunningham to Lifford/Strabane/A5 Link		Status: A3
Drawing Title: GROUND INVESTIGATION & EARTHWORKS SECTION 3 MAINLINE		Rev: P01
Designed: JMM	Date: NOV 2025	EIAR Drawing Identifier:
Drawn: MG	Scale @ A1: 1:2500	EIAR DRAWING 4.62
Approved: ED	@ A3: 1:5000	File Identifier: TT_Y16112-BT-1A-HGT-S3-DR-CH-06120
Checked: JMM	Sheet: 11 OF 13	

P:\Halcrow\Y16 Projects\Y16112 - TEN-T Priority Route Improvement Project Donegal\CAD\DWG\Prelim Design\CIVD\GSI\TT\_Y16112-BT-1A-HGT-S3-DR-CH-06120 Earthworks\_Plan\_and\_Profile\_P01.dwg

PLAN HORIZONTAL SCALE 1:2500 @ A1; 1:5000 @ A3



**LEGEND**

**PLAN**

- Cable Percussive/ Rotary Core Borehole
- Trial Pit
- Window Sample
- Geophysical Profile Line
- Proposed Development Boundary

**PROFILE**

- Topsoil
- Made Ground
- Peat
- Clay
- Silt
- Sand
- Gravel
- Rock
- No Recovery

**EXCAVATE & REPLACE (PEAT, ORGANIC AND SOFT CLAY/SILT)**

**SUBFORMATION EXPECTED TO BE ROCK**

**MATERIAL EXTRACTION AND DEPOSITION AREAS**

**PROPOSED ATTENUATION POND**

**ANTICIPATED ROCK LEVEL**

**CULVERT**

**COBBLES AND BOULDERS**

**PIEZOMETER / STANDPIPE MEASUREMENT**

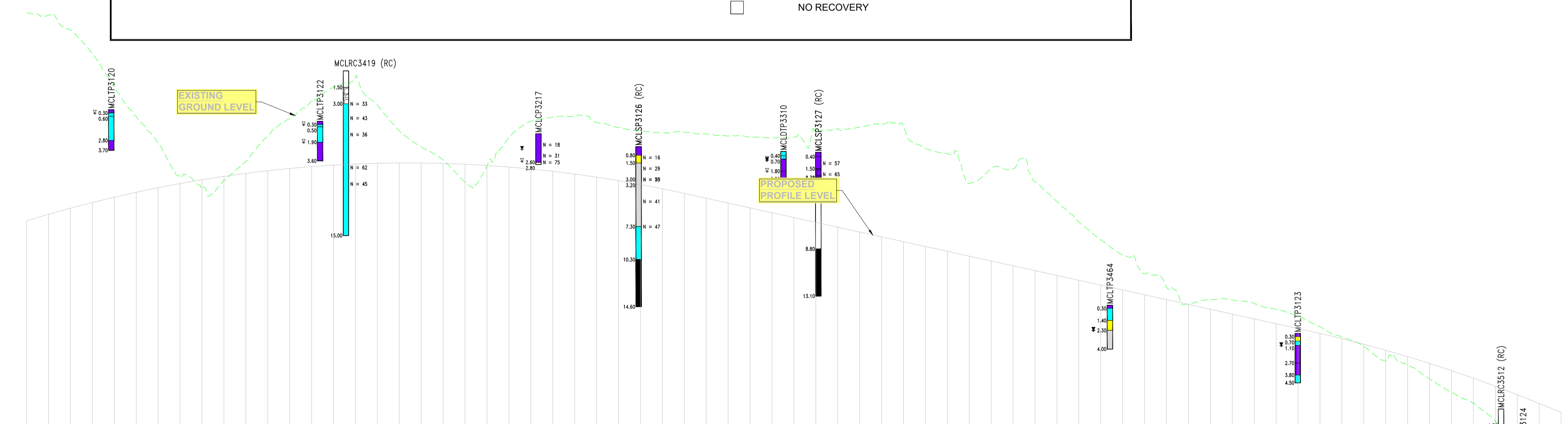
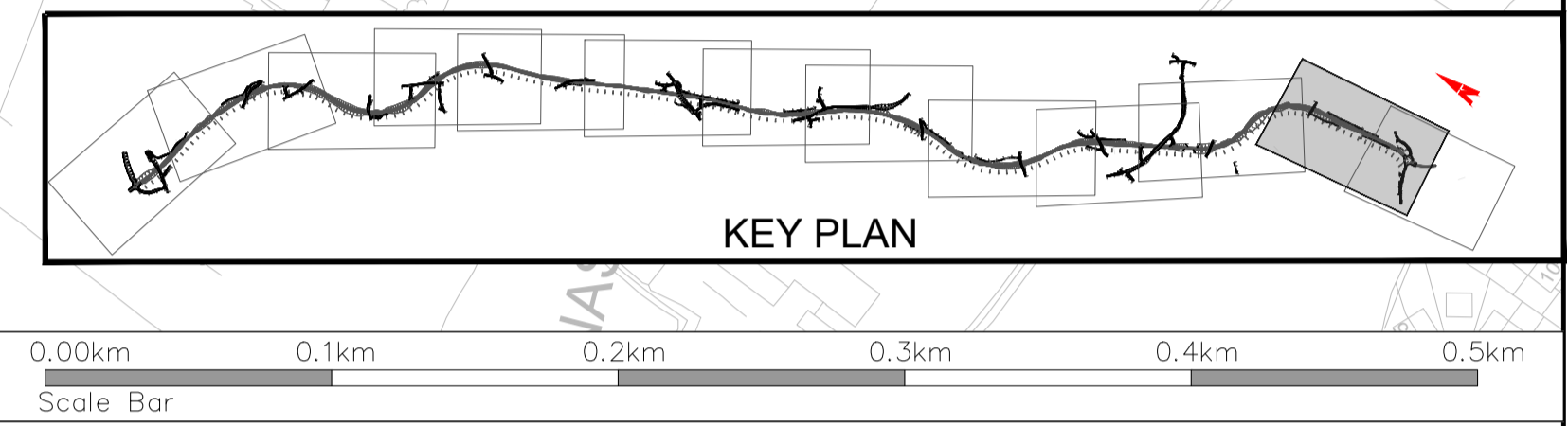
**WATER STRIKE**

**WATER LEVEL 20 MINUTES AFTER STRIKE**

**EXISTING GROUND LEVEL**

**PROPOSED LEVEL**

**N = N-VALUE**



DATUM 27m

Chainage	Proposed Levels	Existing Levels	Slope Gradient	Ground Treatment / Special Measures	Earthworks Area
67.473 - 48.516 - 15+400	48.516	67.473	1V:2.5H	Rock Excavation Required	Cut 11
67.263 - 49.105 - 15+420	49.105	67.263	LHS - 1V:3H	NO SPECIAL MEASURES ANTICIPATED	
65.922 - 49.659 - 15+440	49.659	65.922	RHS - 1V:2H	NO SPECIAL MEASURES ANTICIPATED	Cut 11
63.742 - 50.778 - 15+460	50.778	63.742	LHS - 1V:2H	NO SPECIAL MEASURES ANTICIPATED	
60.702 - 50.662 - 15+480	50.662	60.702	RHS - 1V:2.5H	NO SPECIAL MEASURES ANTICIPATED	Cut 11
58.015 - 51.111 - 15+500	51.111	58.015	LHS - 1V:3H	NO SPECIAL MEASURES ANTICIPATED	
55.526 - 51.525 - 15+520	51.525	55.526	RHS - 1V:2H	NO SPECIAL MEASURES ANTICIPATED	Cut 11
52.596 - 51.905 - 15+540	51.905	52.596	LHS - 1V:2H	NO SPECIAL MEASURES ANTICIPATED	
51.437 - 52.249 - 15+560	52.249	51.437	RHS - 1V:2.5H	NO SPECIAL MEASURES ANTICIPATED	Cut 11
52.205 - 52.559 - 15+580	52.559	52.205	LHS - 1V:3H	NO SPECIAL MEASURES ANTICIPATED	
53.952 - 52.834 - 15+600	52.834	53.952	RHS - 1V:2H	NO SPECIAL MEASURES ANTICIPATED	Cut 11
56.267 - 53.074 - 15+620	53.074	56.267	LHS - 1V:2H	NO SPECIAL MEASURES ANTICIPATED	
57.809 - 53.279 - 15+640	53.279	57.809	RHS - 1V:2H	NO SPECIAL MEASURES ANTICIPATED	Cut 11
59.406 - 53.449 - 15+660	53.449	59.406	LHS - 1V:2H	NO SPECIAL MEASURES ANTICIPATED	
60.676 - 53.584 - 15+680	53.584	60.676	RHS - 1V:2.5H	NO SPECIAL MEASURES ANTICIPATED	Cut 11
61.529 - 53.684 - 15+700	53.684	61.529	LHS - 1V:3H	NO SPECIAL MEASURES ANTICIPATED	
59.037 - 53.750 - 15+720	53.750	59.037	RHS - 1V:2H	NO SPECIAL MEASURES ANTICIPATED	Cut 11
56.727 - 53.781 - 15+740	53.781	56.727	LHS - 1V:2H	NO SPECIAL MEASURES ANTICIPATED	
55.239 - 53.776 - 15+760	53.776	55.239	RHS - 1V:2.5H	NO SPECIAL MEASURES ANTICIPATED	Cut 11
54.054 - 53.737 - 15+780	53.737	54.054	LHS - 1V:2H	NO SPECIAL MEASURES ANTICIPATED	
52.006 - 53.663 - 15+800	53.663	52.006	RHS - 1V:2H	NO SPECIAL MEASURES ANTICIPATED	Cut 11
53.497 - 53.555 - 15+820	53.555	53.497	LHS - 1V:2H	NO SPECIAL MEASURES ANTICIPATED	
56.101 - 53.411 - 15+840	53.411	56.101	RHS - 1V:2.5H	NO SPECIAL MEASURES ANTICIPATED	Cut 11
57.588 - 53.232 - 15+860	53.232	57.588	LHS - 1V:2H	NO SPECIAL MEASURES ANTICIPATED	
57.973 - 53.019 - 15+880	53.019	57.973	RHS - 1V:2H	NO SPECIAL MEASURES ANTICIPATED	Cut 11
58.032 - 52.770 - 15+900	52.770	58.032	LHS - 1V:2H	NO SPECIAL MEASURES ANTICIPATED	
57.484 - 52.487 - 15+920	52.487	57.484	RHS - 1V:2.5H	NO SPECIAL MEASURES ANTICIPATED	Cut 11
57.020 - 52.169 - 15+940	52.169	57.020	LHS - 1V:2H	NO SPECIAL MEASURES ANTICIPATED	
56.736 - 51.916 - 15+960	51.916	56.736	RHS - 1V:2H	NO SPECIAL MEASURES ANTICIPATED	Cut 11
56.531 - 51.428 - 15+980	51.428	56.531	LHS - 1V:2H	NO SPECIAL MEASURES ANTICIPATED	
56.577 - 51.006 - 16+000	51.006	56.577	RHS - 1V:2H	NO SPECIAL MEASURES ANTICIPATED	Cut 11
56.419 - 50.566 - 16+020	50.566	56.419	LHS - 1V:2H	NO SPECIAL MEASURES ANTICIPATED	
56.241 - 50.126 - 16+040	50.126	56.241	RHS - 1V:2.5H	NO SPECIAL MEASURES ANTICIPATED	Cut 11
56.116 - 49.686 - 16+060	49.686	56.116	LHS - 1V:2H	NO SPECIAL MEASURES ANTICIPATED	
56.046 - 49.246 - 16+080	49.246	56.046	RHS - 1V:2H	NO SPECIAL MEASURES ANTICIPATED	Cut 11
56.134 - 48.807 - 16+100	48.807	56.134	LHS - 1V:2H	NO SPECIAL MEASURES ANTICIPATED	
56.623 - 48.367 - 16+120	48.367	56.623	RHS - 1V:2.5H	NO SPECIAL MEASURES ANTICIPATED	Cut 11
56.907 - 47.927 - 16+140	47.927	56.907	LHS - 1V:2H	NO SPECIAL MEASURES ANTICIPATED	
57.084 - 47.487 - 16+160	47.487	57.084	RHS - 1V:2H	NO SPECIAL MEASURES ANTICIPATED	Cut 11
57.346 - 47.047 - 16+180	47.047	57.346	LHS - 1V:2H	NO SPECIAL MEASURES ANTICIPATED	
57.106 - 46.608 - 16+200	46.608	57.106	RHS - 1V:2.5H	NO SPECIAL MEASURES ANTICIPATED	Cut 11
55.113 - 46.168 - 16+220	46.168	55.113	LHS - 1V:2H	NO SPECIAL MEASURES ANTICIPATED	
54.623 - 45.728 - 16+240	45.728	54.623	RHS - 1V:2H	NO SPECIAL MEASURES ANTICIPATED	Cut 11
51.910 - 45.288 - 16+260	45.288	51.910	LHS - 1V:2H	NO SPECIAL MEASURES ANTICIPATED	
53.271 - 44.848 - 16+280	44.848	53.271	RHS - 1V:2.5H	NO SPECIAL MEASURES ANTICIPATED	Cut 11
53.231 - 44.409 - 16+300	44.409	53.231	LHS - 1V:2H	NO SPECIAL MEASURES ANTICIPATED	
52.045 - 43.969 - 16+320	43.969	52.045	RHS - 1V:2H	NO SPECIAL MEASURES ANTICIPATED	Cut 11
50.261 - 43.529 - 16+340	43.529	50.261	LHS - 1V:2H	NO SPECIAL MEASURES ANTICIPATED	
48.397 - 43.089 - 16+360	43.089	48.397	RHS - 1V:2H	NO SPECIAL MEASURES ANTICIPATED	Cut 11
46.774 - 42.650 - 16+380	42.650	46.774	LHS - 1V:2H	NO SPECIAL MEASURES ANTICIPATED	
45.393 - 42.210 - 16+400	42.210	45.393	RHS - 1V:2.5H	NO SPECIAL MEASURES ANTICIPATED	Cut 11
43.685 - 41.770 - 16+420	41.770	43.685	LHS - 1V:2H	NO SPECIAL MEASURES ANTICIPATED	
42.469 - 41.330 - 16+440	41.330	42.469	RHS - 1V:2H	NO SPECIAL MEASURES ANTICIPATED	Cut 11
40.950 - 40.890 - 16+460	40.890	40.950	LHS - 1V:2H	NO SPECIAL MEASURES ANTICIPATED	
41.334 - 40.451 - 16+480	40.451	41.334	RHS - 1V:2H	NO SPECIAL MEASURES ANTICIPATED	Cut 11
41.296 - 40.011 - 16+500	40.011	41.296	LHS - 1V:2H	NO SPECIAL MEASURES ANTICIPATED	
40.991 - 39.571 - 16+520	39.571	40.991	RHS - 1V:2H	NO SPECIAL MEASURES ANTICIPATED	Cut 11
40.438 - 39.131 - 16+540	39.131	40.438	LHS - 1V:2H	NO SPECIAL MEASURES ANTICIPATED	
39.854 - 38.691 - 16+560	38.691	39.854	RHS - 1V:2H	NO SPECIAL MEASURES ANTICIPATED	Cut 11
38.970 - 38.248 - 16+580	38.248	38.970	LHS - 1V:2H	NO SPECIAL MEASURES ANTICIPATED	
37.937 - 37.774 - 16+600	37.774	37.937	RHS - 1V:2H	NO SPECIAL MEASURES ANTICIPATED	Cut 11
37.052 - 37.263 - 16+620	37.263	37.052	LHS - 1V:2H	NO SPECIAL MEASURES ANTICIPATED	
35.744 - 36.716 - 16+640	36.716	35.744	RHS - 1V:2H	NO SPECIAL MEASURES ANTICIPATED	Cut 11
35.371 - 36.132 - 16+660	36.132	35.371	LHS - 1V:2H	NO SPECIAL MEASURES ANTICIPATED	
34.112 - 35.511 - 16+680	35.511	34.112	RHS - 1V:2H	NO SPECIAL MEASURES ANTICIPATED	Cut 11
32.918 - 34.854 - 16+700	34.854	32.918	LHS - 1V:2H	NO SPECIAL MEASURES ANTICIPATED	
31.914 - 34.159 - 16+720	34.159	31.914	RHS - 1V:2H	NO SPECIAL MEASURES ANTICIPATED	Cut 11
30.235 - 33.429 - 16+740	33.429	30.235	LHS - 1V:2H	NO SPECIAL MEASURES ANTICIPATED	
28.990 - 32.861 - 16+760	32.861	28.990	RHS - 1V:2H	NO SPECIAL MEASURES ANTICIPATED	Cut 11
26.540 - 31.861 - 16+780	31.861	26.540	LHS - 1V:2H	NO SPECIAL MEASURES ANTICIPATED	
26.069 - 31.055 - 16+800	31.055	26.069	RHS - 1V:2H	NO SPECIAL MEASURES ANTICIPATED	Cut 11

MAINLINE ALIGNMENT  
LONGITUDINAL PROFILE-CH:15400-16800  
SCALE: H 1:2500, V 1:250

CYAL50441196  
© Talte Éireann - Surveying

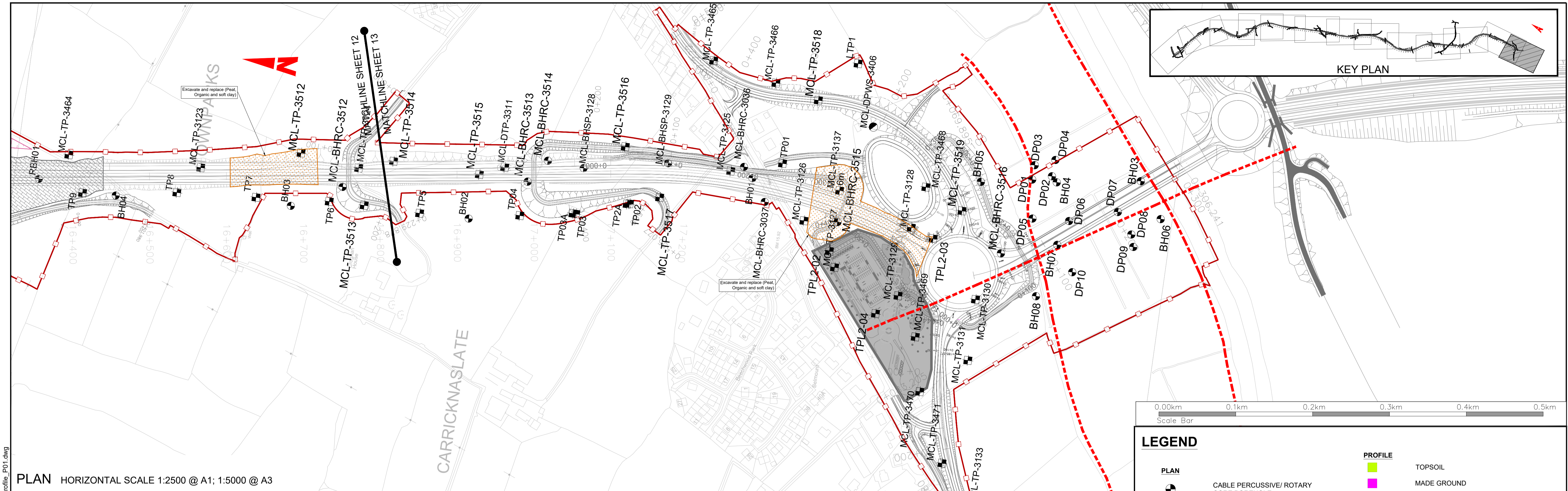


Notes  
DO NOT SCALE, use figured dimensions only. All levels are referred to Ordnance Survey Datum, Main Head.  
This drawing is the property of Donegal County Council. It is a confidential document and must not be copied, used, or its contents divulged without prior written consent. This document should not be relied on or used in circumstances other than those for which it was originally prepared. Barry Transportation accepts no responsibility for this document to any other party other than the party by whom it was commissioned.

Rev.	Date	Drawn	Description	Chk'd	Appr.
P01	12.11.25	MG	ISSUE FOR PLANNING	JMM	ED

Project Title:	TEN-T PRIORITY ROUTE IMPROVEMENT PROJECT DONEGAL Section 3 - N14 Manorcunningham to Lifford/Strabane/A5 Link		
Drawing Title:	GROUND INVESTIGATION & EARTHWORKS SECTION 3 MAINLINE		
Designed:	JMM	Date:	NOV 2025
Drawn:	MG	Scale @ A1:	1:2500
Approved:	ED	@ A3:	1:5000
Checked:	JMM	Sheet:	12 OF 13
Rev:	A3	Rev:	P01
File Identifier:	TT_Y16112-BT-1A-HGT-S3-DR-CH-06120		

P:\Halcrow\Barr\Y16112 - TEN-T Priority Route Improvement Project Donegal\CAD\DWG\Prelim Design\CIVIL\DWG\Gst\TT\_Y16112-BT-1A-HGT-S3-DR-CH-06120\_Earthworks\_Plan\_and\_Profile\_P01.dwg

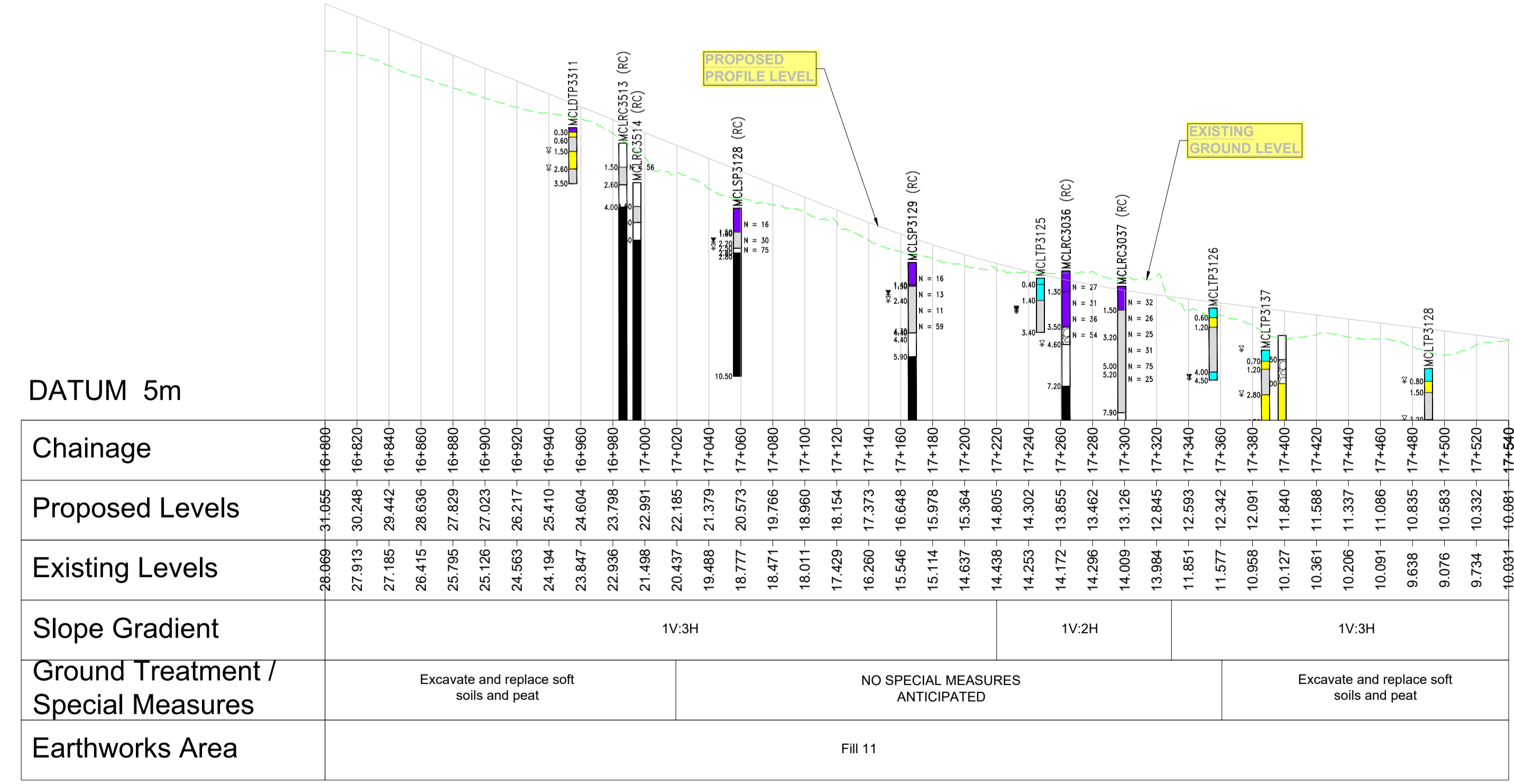


PLAN HORIZONTAL SCALE 1:2500 @ A1; 1:5000 @ A3

0.00km 0.1km 0.2km 0.3km 0.4km 0.5km  
Scale Bar

### LEGEND

PLAN	PROFILE
	TOPSOIL
	MADE GROUND
	PEAT
	CLAY
	SILT
	SAND
	GRAVEL
	ROCK
	NO RECOVERY
	COBBLES AND BOULDERS
	PIEZOMETER / STANDPIPE MEASUREMENT
	WATER STRIKE
	WATER LEVEL 20 MINUTES AFTER STRIKE
	EXISTING GROUND LEVEL
	PROPOSED LEVEL
	N-VALUE



MAINLINE ALIGNMENT LONGITUDINAL PROFILE-CH:16800-17540 SCALE: H 1:2500,V 1:250

CYAL50441196 © Taitte Éireann - Surveying

Notes  
DO NOT SCALE, use figured dimensions only. All levels are referred to Ordnance Survey Datum, Main Head.  
This drawing is the property of Donegal County Council. It is a confidential document and must not be copied, used, or its contents divulged without prior written consent. This document should not be relied on or used in circumstances other than those for which it was originally prepared. Barry Transportation accepts no responsibility for this document to any other party other than the party by whom it was commissioned.

Rev.	Date	Drawn	Description	Chkd	Appr.
P01	12.11.25	MG	ISSUE FOR PLANNING	JMM	ED

Project Title: TEN-T PRIORITY ROUTE IMPROVEMENT PROJECT DONEGAL Section 3 - N14 Manorcunningham to Lifford/Strabane/A5 Link

Drawing Title: GROUND INVESTIGATION & EARTHWORKS SECTION 3 MAINLINE

Designed: JMM Date: NOV 2025 EIA Drawing Identifier: IAR DRAWING 4.62

Drawn: MG Scale @ A1: 1:2500 Scale @ A3: 1:5000 File Identifier: TT\_Y16112-BT-1A-HGT-S3-DR-CH-06120

Approved: ED

Checked: JMM Sheet: 13 OF 13

Status: A3

Rev: P01