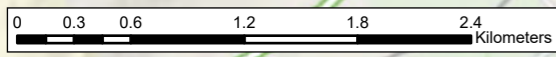
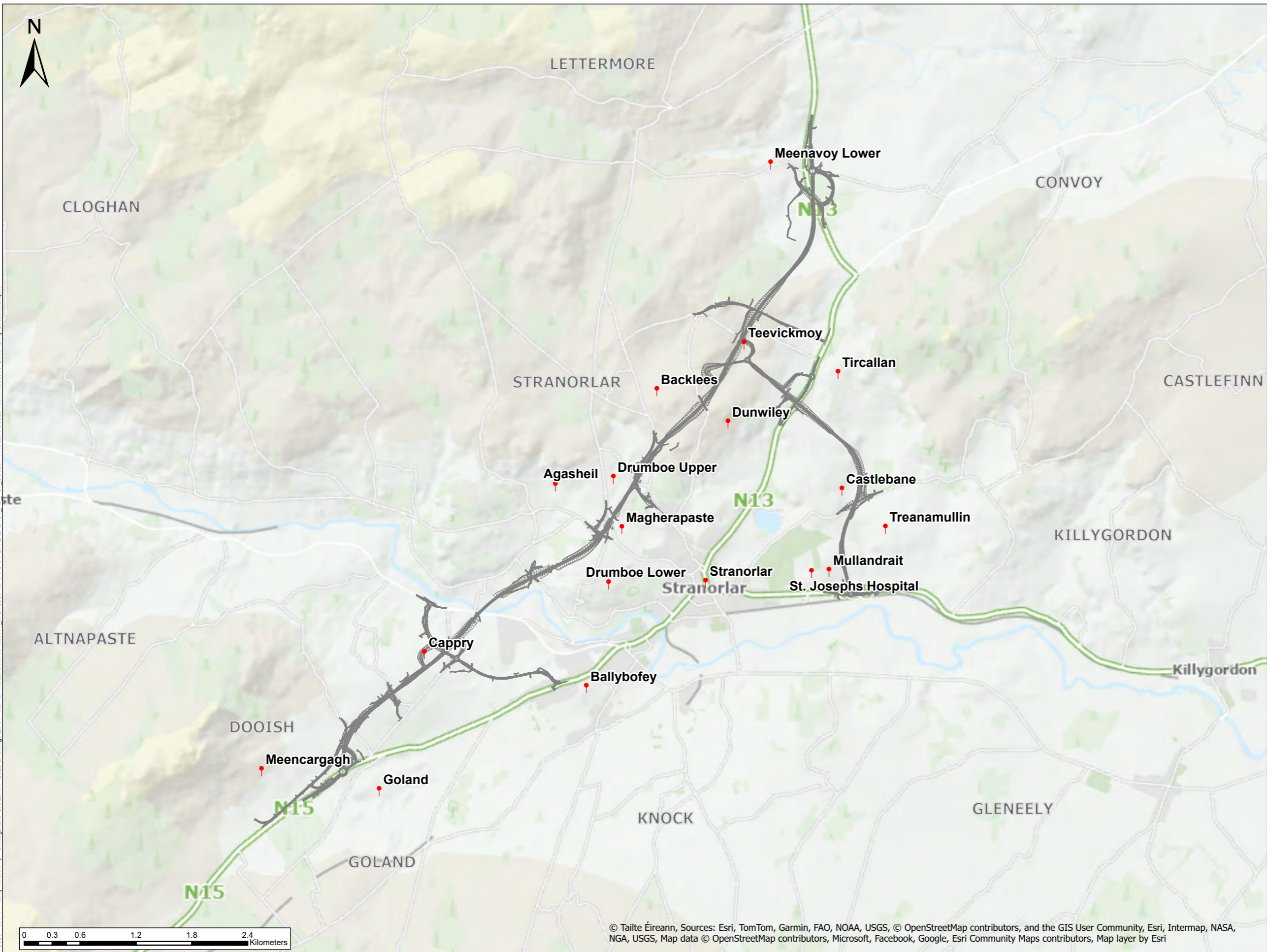




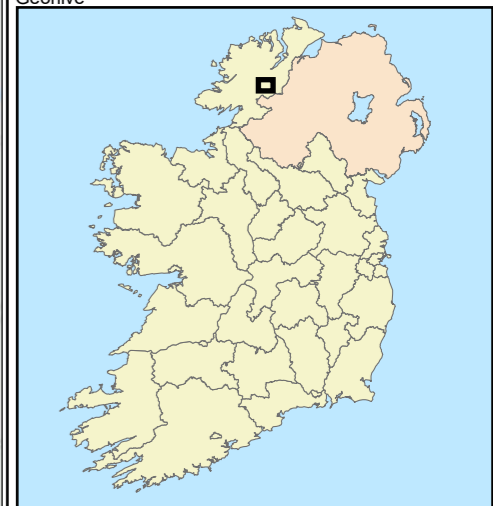
### LEGEND

- PROPOSED ROAD DEVELOPMENT
- COMMUNITY LOCATIONS



© Tailte Éireann, Sources: Esri, TomTom, Garmin, FAO, NOAA, USGS, © OpenStreetMap contributors, and the GIS User Community, Esri, Intermap, NASA, NGA, USGS, Map data © OpenStreetMap contributors, Microsoft, Facebook, Google, Esri Community Maps contributors, Map layer by Esri

Data Sources:  
Geohive



NOTES  
DO NOT SCALE, use figured dimensions only.  
All levels are referred to Ordnance Survey Datum, Malin Head.  
This drawing is the property of the Donegal County Council. It is a confidential document and must not be copied, used, or its contents divulged without prior written consent. This document should not be relied on or used in circumstances other than those for which it was originally prepared. RPS / Barry Transportation accepts no responsibility for this document to any other party other than the party by whom it was commissioned.

Rev.	Date	Drawn	Description	Chk'd	Appr.
P01	17/02/26	MK	ISSUE FOR PLANNING	RP	GMcE

Project Title: TEN-T Priority Route Improvement Project, Donegal Section 1 - N15/N13 Ballybofey / Stranorlar Urban Region			
Drawing Title: Section 1 Health Assessment Indicative Community Locations			
Designed: N/A	Date: 17/02/2026	EIAR Drawing Identifier:	Status:
Drawn: MK	Scale @ A1: N/A	EIAR Drawing 8.03	A3
Approved: GMcE	@ A3: 1:40,000	File Identifier:	Rev:
Checked: RP	Sheet: 01 of 01	TT_MGT0337-RPS-P3-S1-DR-Z-EN0104	P01