

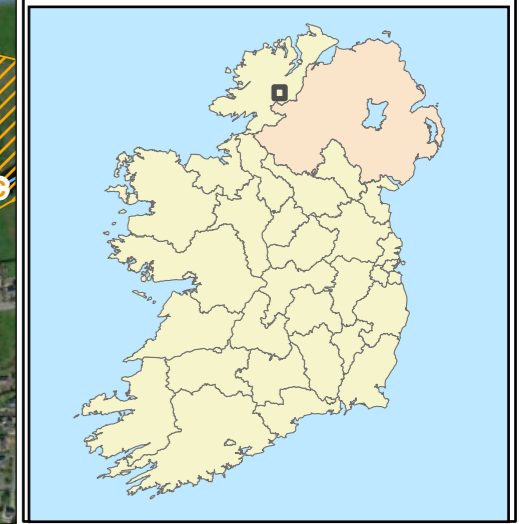
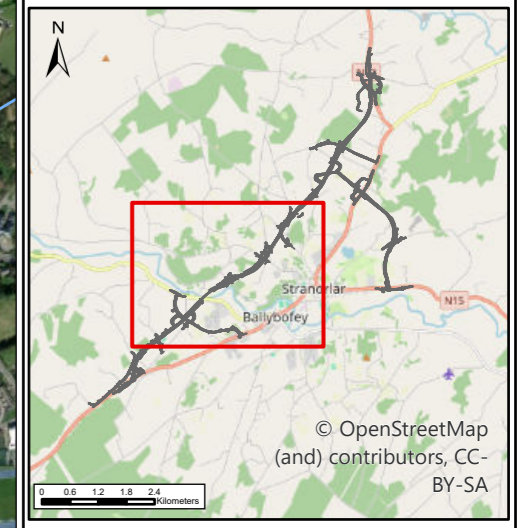
**LEGEND**

- PROPOSED DEVELOPMENT BOUNDARY
- PROPOSED ROAD DEVELOPMENT
- SPECIAL AREAS OF CONSERVATION (SAC)
- SPECIAL PROTECTION AREA (SPA)
- WFD RIVER WATER BODIES

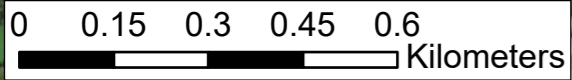
**KEY ECOLOGICAL RECEPTORS**

- 1-1
- 1-2
- 1-3
- 1-4

**Data Sources:** NPWS



U:\MGT\337-RPS-P3-S1-DR-Z-EN244-A3\_P01\_Key Ecological Receptors - Section 1.dwg



**NOTES**  
 DO NOT SCALE, use figured dimensions only.  
 All levels are referred to Ordnance Survey Datum, Malin Head.  
 This drawing is the property of the Donegal County Council. It is a confidential document and must not be copied, used, or its contents divulged without prior written consent. This document should not be relied on or used in circumstances other than those for which it was originally prepared. RPS / Barry Transportation accepts no responsibility for this document to any other party than the party by whom it was commissioned.

Rev.	Date	Drawn	Description	Chk'd	Appr.
P01	17/02/26	AK	ISSUE FOR PLANNING	MS	GMcE

Project Title: TEN-T Priority Route Improvement Project, Donegal Section 1 - N15/N13 Ballybofey / Stranorlar Urban Region			
Drawing Title: Key Ecological Receptors – Section 1			
Designed: N/A	Date: 17/02/2026	EIAR Drawing Identifier:	Status: A3
Drawn: AK	Scale @ A1: N/A	EIAR Drawing 9A.13	Rev: P01
Approved: GMcE	@ A3: 1:12,000	File Identifier:	
Checked: MS	Sheet: 01 of 01	TT_MGT0337-RPS-P3-S1-DR-Z-EN244	