

- LEGEND**
- PROPOSED DEVELOPMENT BOUNDARY
  - INFILTRATION BASIN / ATTENUATION POND
  - CROSS DRAIN (CD)
  - >>>> SURFACE WATER CHANNEL COLLECTION NETWORK
  - >>>> OPEN DRAIN (USED AS CUT OFF DRAIN)
  - CULVERT (CUL.)
  - INFILTRATION TRENCHES
  - CARRIER PIPE
  - >>>> FILTER DRAIN
  - >>>> KERBING DRAINAGE (KERBS AND GULLIES OR DRAINAGE KERB BLOCKS)
  - >>>> WATERCOURSE DIVERSION
  - FLOOD COMPENSATION AREAS (FCA)



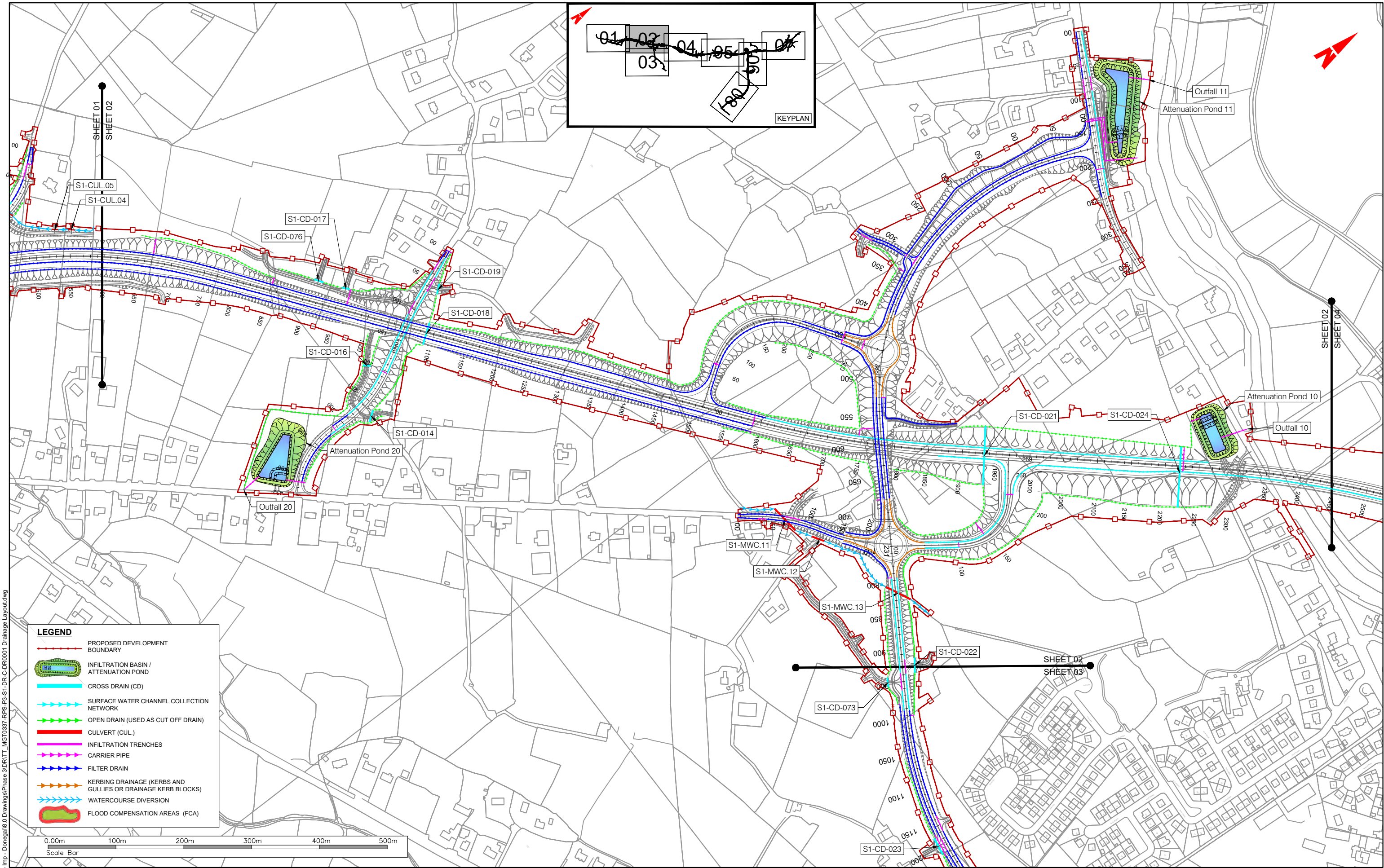
T:\MGTO337 - Ten-T Priority Route Imp - Donegal\8.0 Drawings\Phase 3\DRIT\ MGTO337-RPS-P3-S1-DR-C-DR0001\_Drainage\_Layout.dwg



**NOTES**  
 DO NOT SCALE, use figured dimensions only.  
 All levels are referred to Ordnance Survey Datum, Main Head.  
 This drawing is the property of the Donegal County Council. It is a confidential document and must not be copied, used, or its contents divulged without prior written consent. This document should not be relied on or used in circumstances other than those for which it was originally prepared. RPS / Barry Transportation accepts no responsibility for this document to any other party other than the party by whom it was commissioned.

Rev.	Date	Drawn	Description	Chk'd	Appr.
P01	29.10.25	MC	ISSUE FOR PLANNING	BL	EC

Project Title: TEN-T Priority Route Improvement Project, Donegal Section 1 - N15/N13 Ballybofey / Stranorlar Urban Region		Status: A3
Drawing Title: DRAINAGE LAYOUT		Rev: P01
Designed: MK	Date: OCT 2025	NIS Drawing Identifier:
Drawn: MC	Scale @ A1: 1:2500	NIS DRAWING 33
Approved: EC	@ A3: 1:5000	File Identifier:
Checked: BL	Sheet: 01 of 08	TT_MGTO337-RPS-P3-S1-DR-C-DR0001



**LEGEND**

- PROPOSED DEVELOPMENT BOUNDARY
- INFILTRATION BASIN / ATTENUATION POND
- CROSS DRAIN (CD)
- SURFACE WATER CHANNEL COLLECTION NETWORK
- OPEN DRAIN (USED AS CUT OFF DRAIN)
- CULVERT (CUL.)
- INFILTRATION TRENCHES
- CARRIER PIPE
- FILTER DRAIN
- KERBING DRAINAGE (KERBS AND GULLIES OR DRAINAGE KERB BLOCKS)
- WATERCOURSE DIVERSION
- FLOOD COMPENSATION AREAS (FCA)



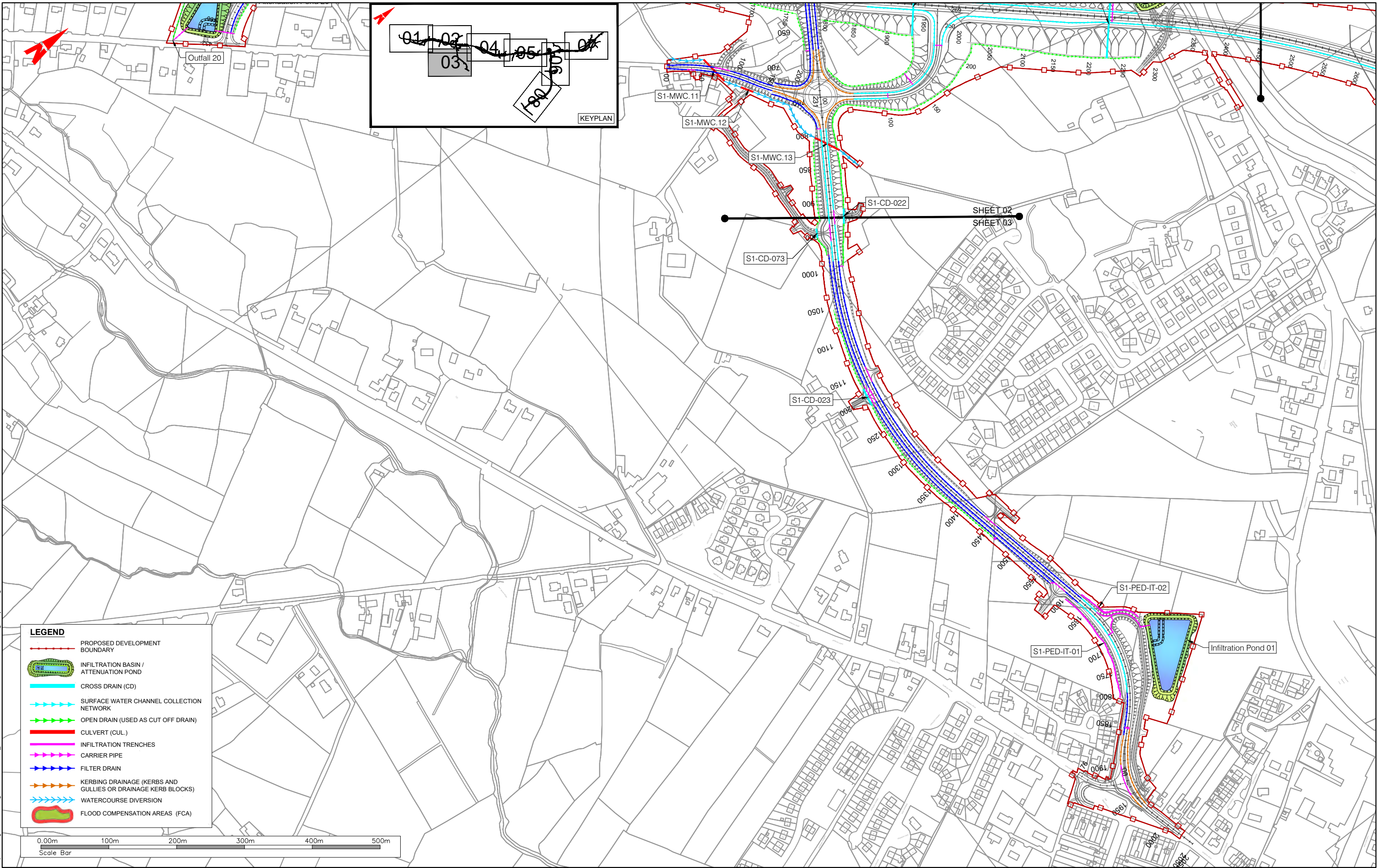
T:\MGTO337 - Ten-T Priority Route Imp - Donegal\8.0 Drawings\Phase 3\DRIT - MGTO337-RPS-P3-S1-DR-C-DR0001 Drainage Layout.dwg



**NOTES**  
 DO NOT SCALE, use figured dimensions only.  
 All levels are referred to Ordnance Survey Datum, Mean Head.  
 This drawing is the property of the Donegal County Council. It is a confidential document and must not be copied, used, or its contents divulged without prior written consent. This document should not be relied on or used in circumstances other than those for which it was originally prepared. RPS / Barry Transportation accepts no responsibility for this document to any other party other than the party by whom it was commissioned.

Rev.	Date	Drawn	Description	Chk'd	Appr.
P01	29.10.25	MC	ISSUE FOR PLANNING	BL	EC

Project Title: TEN-T Priority Route Improvement Project, Donegal Section 1 - N15/N13 Ballybofey / Stranorlar Urban Region		Status: A3
Drawing Title: DRAINAGE LAYOUT		Rev: P01
Designed: MK	Date: OCT 2025	NIS Drawing Identifier:
Drawn: MC	Scale @ A1: 1:2500	NIS DRAWING 33
Approved: EC	@ A3: 1:5000	File Identifier:
Checked: BL	Sheet: 02 of 08	TT_MGT0337-RPS-P3-S1-DR-C-DR0001



- LEGEND**
- PROPOSED DEVELOPMENT BOUNDARY
  - INFILTRATION BASIN / ATTENUATION POND
  - CROSS DRAIN (CD)
  - SURFACE WATER CHANNEL COLLECTION NETWORK
  - OPEN DRAIN (USED AS CUT OFF DRAIN)
  - CULVERT (CUL.)
  - INFILTRATION TRENCHES
  - CARRIER PIPE
  - FILTER DRAIN
  - KERBING DRAINAGE (KERBS AND GULLIES OR DRAINAGE KERB BLOCKS)
  - WATERCOURSE DIVERSION
  - FLOOD COMPENSATION AREAS (FCA)

T:\MGTO337 - Ten-T Priority Route Imp - Donegal\8.0 Drawings\Phase 3\DRIT\ MGTO337-RPS-P3-S1-DR-C-DR0001 Drainage Layout.dwg

Bonnagar Iompar Éireann  
Transport Infrastructure Ireland

Riádas na hÉireann  
Government of Ireland

Tionscadal Éireann  
Project Ireland  
2040

Donegal  
NRO  
Oifis Doimhne Taisceána  
Dhún na nGall

Comhairle Contae  
Dhún na nGall  
Donegal County Council

RPS BARRY  
TRANSPORTATION

**NOTES**

DO NOT SCALE, use figured dimensions only.

All levels are referred to Ordnance Survey Datum, Mean Head.

This drawing is the property of the Donegal County Council. It is a confidential document and must not be copied, used, or its contents divulged without prior written consent. This document should not be relied on or used in circumstances other than those for which it was originally prepared. RPS / Barry Transportation accepts no responsibility for this document to any other party other than the party by whom it was commissioned.

Rev.	Date	Drawn	Description	Chk'd	Appr.
P01	29.10.25	MC	ISSUE FOR PLANNING	BL	EC

Project Title: TEN-T Priority Route Improvement Project, Donegal Section 1 - N15/N13 Ballybofey / Stranorlar Urban Region

Drawing Title: DRAINAGE LAYOUT

Status: A3

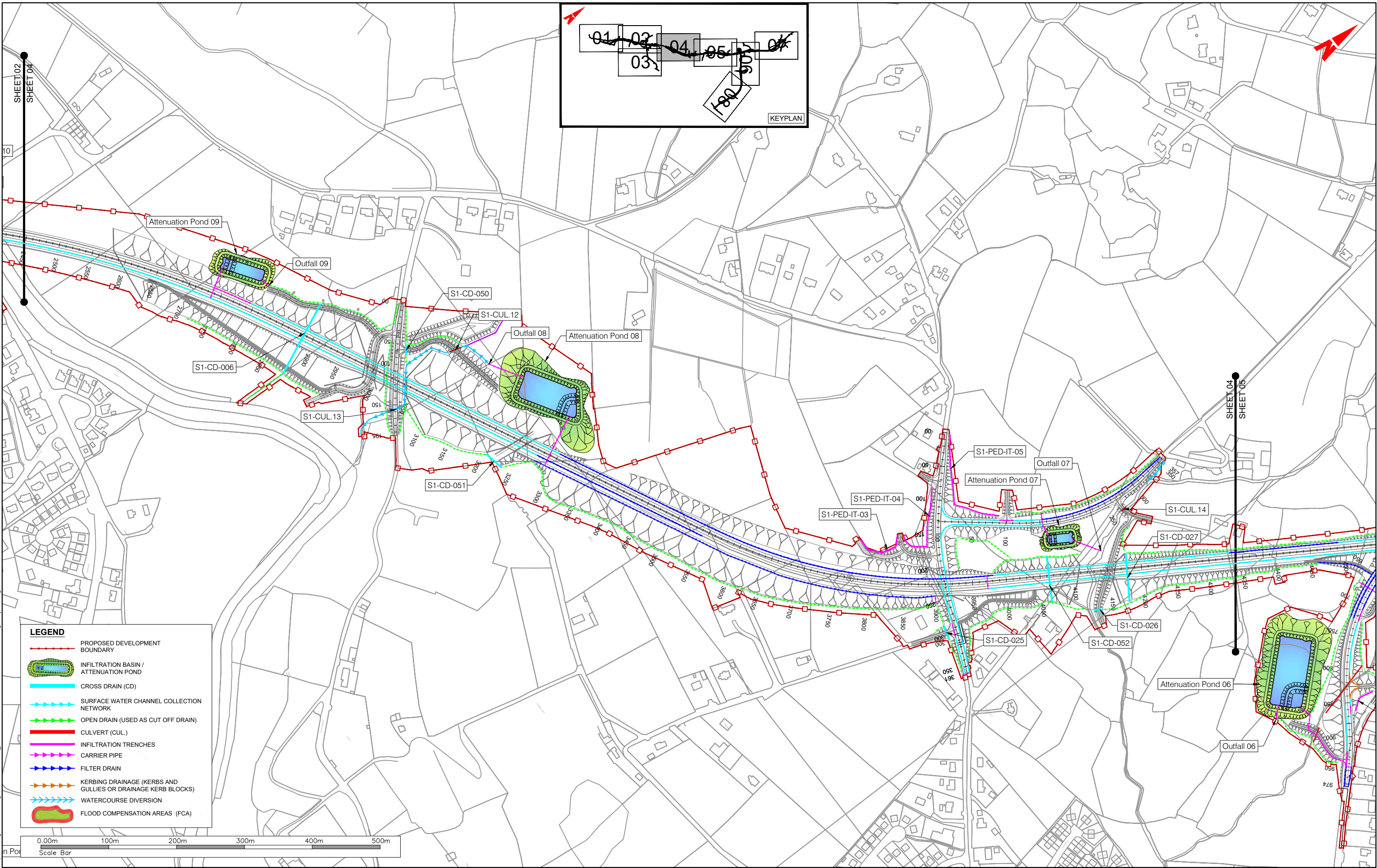
Designed: MK Date: OCT 2025 NIS Drawing Identifier: NIS DRAWING 33

Drawn: MC Scale @ A1: 1:2500 @ A3: 1:5000 File Identifier: TT\_MGT0337-RPS-P3-S1-DR-C-DR0001

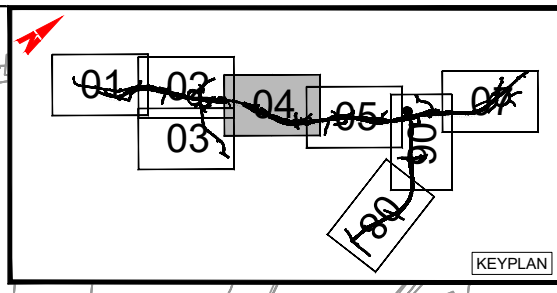
Approved: EC

Checked: BL Sheet: 03 of 08

Rev: P01



- LEGEND**
- PROPOSED DEVELOPMENT BOUNDARY
  - INFILTRATION BASIN / ATTENUATION POND
  - CROSS DRAIN (CD)
  - SURFACE WATER CHANNEL COLLECTION NETWORK
  - OPEN DRAIN (USED AS CUT OFF DRAIN)
  - CULVERT (CUL.)
  - INFILTRATION TRENCHES
  - CARRIER PIPE
  - FILTER DRAIN
  - KERBING DRAINAGE (KERBS AND GULLIES OR DRAINAGE KERB BLOCKS)
  - WATERCOURSE DIVERSION
  - FLOOD COMPENSATION AREAS (FCA)



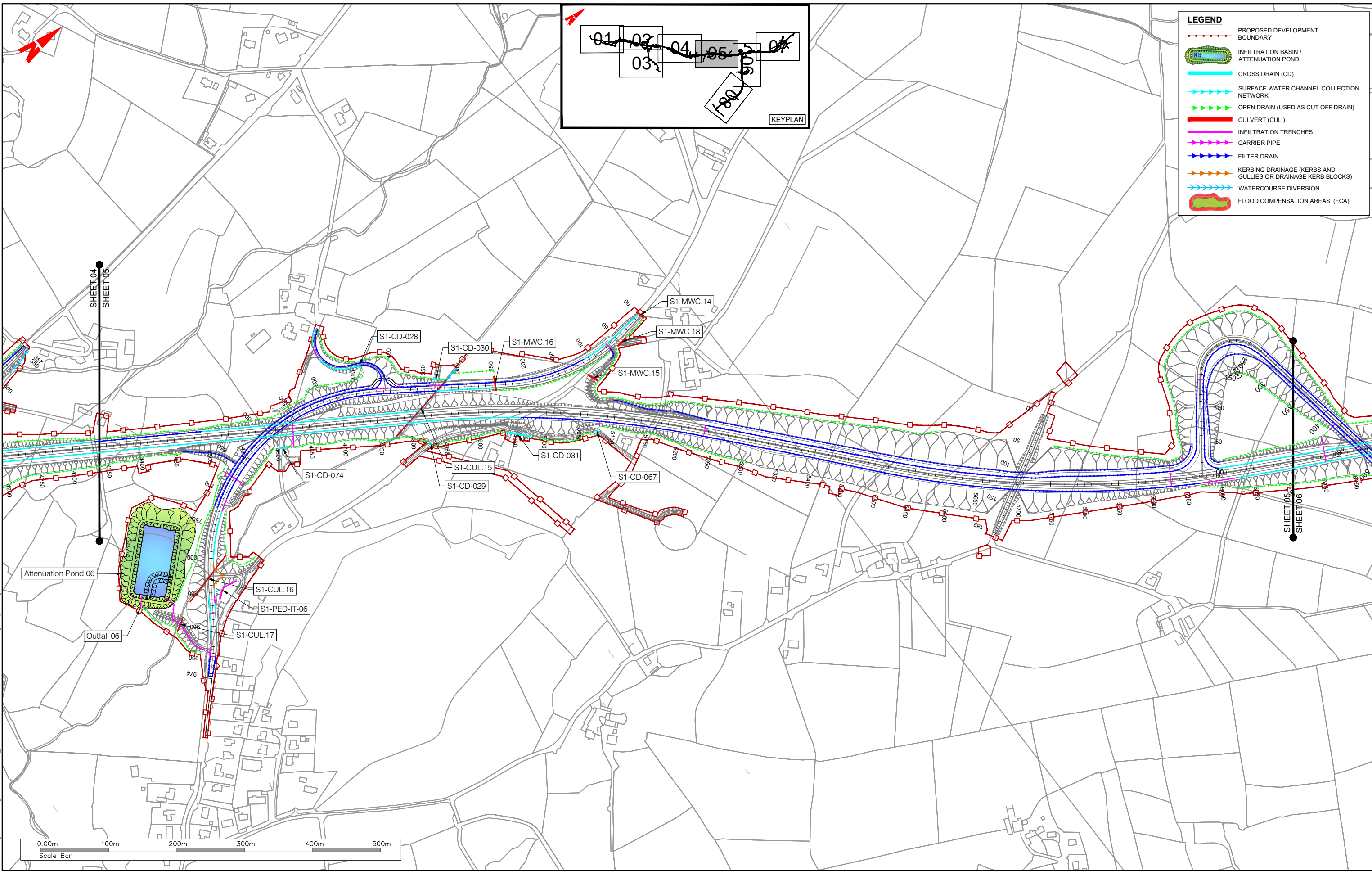
T:\MGTO337 - Ten-T Priority Route Imp - Donegal\8.0 Drawings\Phase 3\DRIT - MGTO337-RPS-P3-S1-DR-C-DR0001-Drainage-Layout.dwg



**NOTES**  
 DO NOT SCALE, use figured dimensions only.  
 All levels are referred to Ordnance Survey Datum, Malin Head.  
 This drawing is the property of the Donegal County Council. It is a confidential document and must not be copied, used, or its contents divulged without prior written consent. This document should not be relied on or used in circumstances other than those for which it was originally prepared. RPS / Barry Transportation accepts no responsibility for this document to any other party other than the party by whom it was commissioned.

Rev.	Date	Drawn	Description	Chk'd	Appr.
P01	29.10.25	MC	ISSUE FOR PLANNING	BL	EC

Project Title: TEN-T Priority Route Improvement Project, Donegal Section 1 - N15/N13 Ballybofey / Stranorlar Urban Region		Status: A3
Drawing Title: DRAINAGE LAYOUT		Rev: P01
Designed: MK	Date: OCT 2025	NIS Drawing Identifier: NIS DRAWING 33
Drawn: MC	Scale @ A1: 1:2500	File Identifier: TT_MGT0337-RPS-P3-S1-DR-C-DR0001
Approved: EC	@ A3: 1:5000	
Checked: BL	Sheet: 04 of 08	



T:\MGT0337 - Ten-T Priority Route Imp - Donegal\8.0 Drawings\Phase 3\DRIT - MGT0337-RPS-P3-S1-DR-C-DR0001 Drainage Layout.dwg

TII  
Bonnagar Iompar Éireann  
Transport Infrastructure Ireland

Rialtas na hÉireann  
Government of Ireland

Tionscadal Éireann  
Project Ireland  
2040

donegal  
NRI  
Oifis Boicéino Taisceána  
Dhún na nGall

Comhairle Contae  
Dhún na nGall  
Donegal County Council

RPS BARRY  
TRANSPORTATION

**NOTES**

DO NOT SCALE, use figured dimensions only.

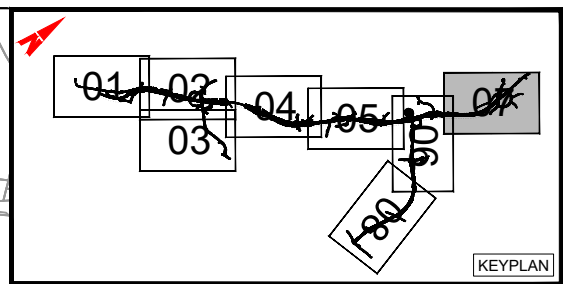
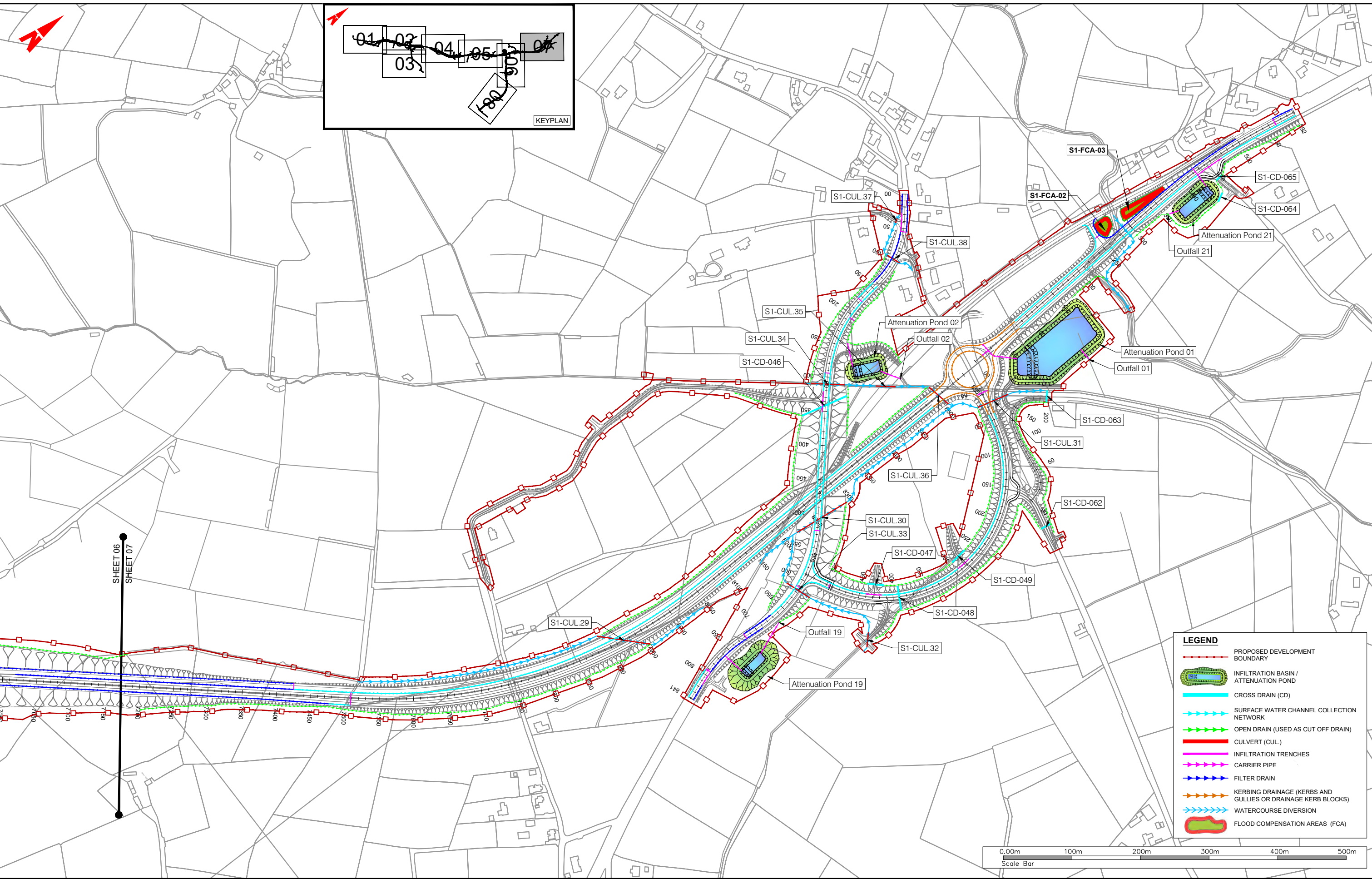
All levels are referred to Ordnance Survey Datum, Mean Head.

This drawing is the property of the Donegal County Council. It is a confidential document and must not be copied, used, or its contents divulged without prior written consent. This document should not be relied on or used in circumstances other than those for which it was originally prepared. RPS / Barry Transportation accepts no responsibility for this document to any other party other than the party by whom it was commissioned.

Rev.	Date	Drawn	Description	Chk'd	Appr.
P01	29.10.25	MC	ISSUE FOR PLANNING	BL	EC

Project Title: TEN-T Priority Route Improvement Project, Donegal Section 1 - N15/N13 Ballybofey / Stranorlar Urban Region		Status: A3
Drawing Title: DRAINAGE LAYOUT		Rev: P01
Designed: MK	Date: OCT 2025	NIS Drawing Identifier:
Drawn: MC	Scale @ A1: 1:2500	NIS DRAWING 33
Approved: EC	@ A3: 1:5000	File Identifier:
Checked: BL	Sheet: 05 of 08	TT_MGT0337-RPS-P3-S1-DR-C-DR0001





**LEGEND**

- PROPOSED DEVELOPMENT BOUNDARY
- INFILTRATION BASIN / ATTENUATION POND
- CROSS DRAIN (CD)
- SURFACE WATER CHANNEL COLLECTION NETWORK
- OPEN DRAIN (USED AS CUT OFF DRAIN)
- CULVERT (CUL)
- INFILTRATION TRENCHES
- CARRIER PIPE
- FILTER DRAIN
- KERBING DRAINAGE (KERBS AND GULLIES OR DRAINAGE KERB BLOCKS)
- WATERCOURSE DIVERSION
- FLOOD COMPENSATION AREAS (FCA)



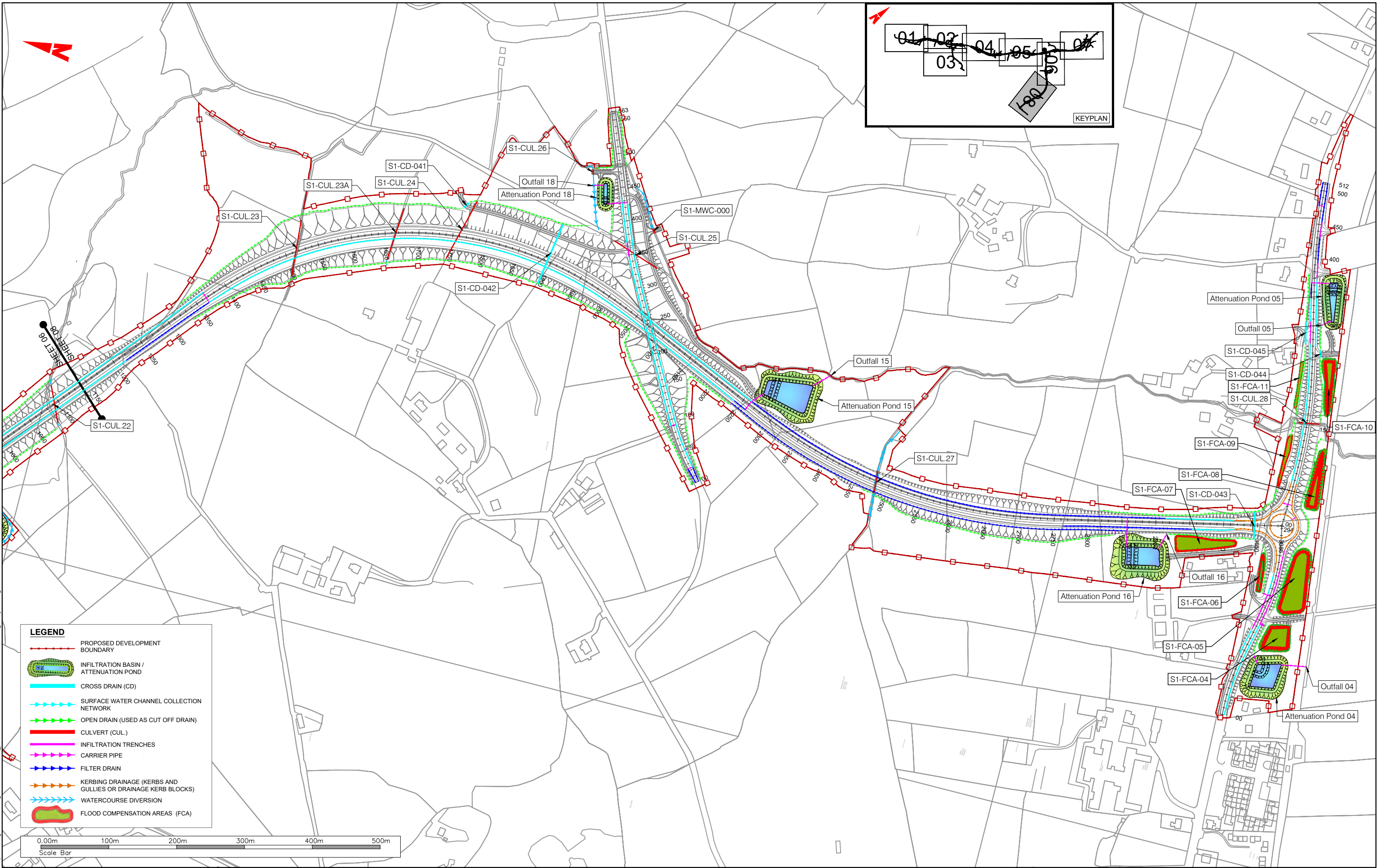
T:\MGT0337 - Ten-T Priority Route Imp - Donegal\8.0 Drawings\Phase 3\DRIT - MGT0337-RPS-P3-S1-DR-C-DR0001 Drainage Layout.dwg

SHEET 06  
SHEET 07

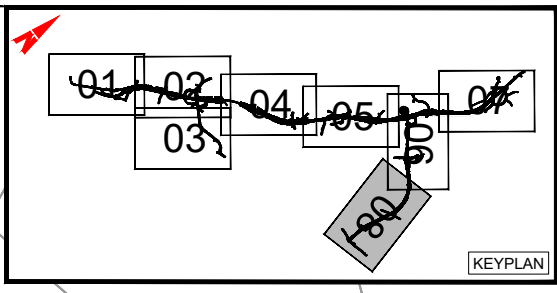
**NOTES**  
 DO NOT SCALE, use figured dimensions only.  
 All levels are referred to Ordnance Survey Datum, Mean Head.  
 This drawing is the property of the Donegal County Council. It is a confidential document and must not be copied, used, or its contents divulged without prior written consent. This document should not be relied on or used in circumstances other than those for which it was originally prepared. RPS / Barry Transportation accepts no responsibility for this document to any other party other than the party by whom it was commissioned.

Rev.	Date	Drawn	Description	Chk'd	Appr.
P01	29.10.25	MC	ISSUE FOR PLANNING	BL	EC

Project Title: TEN-T Priority Route Improvement Project, Donegal Section 1 - N15/N13 Ballybofey / Stranorlar Urban Region		Status: A3
Drawing Title: DRAINAGE LAYOUT		Rev: P01
Designed: MK	Date: OCT 2025	NIS Drawing Identifier: NIS DRAWING 33
Drawn: MC	Scale @ A1: 1:2500	File Identifier: TT_MGT0337-RPS-P3-S1-DR-C-DR0001
Approved: EC	@ A3: 1:5000	
Checked: BL	Sheet: 07 of 08	



- LEGEND**
- PROPOSED DEVELOPMENT BOUNDARY
  - INFILTRATION BASIN / ATTENUATION POND
  - CROSS DRAIN (CD)
  - SURFACE WATER CHANNEL COLLECTION NETWORK
  - OPEN DRAIN (USED AS CUT OFF DRAIN)
  - CULVERT (CUL.)
  - INFILTRATION TRENCHES
  - CARRIER PIPE
  - FILTER DRAIN
  - KERBING DRAINAGE (KERBS AND GULLIES OR DRAINAGE KERB BLOCKS)
  - WATERCOURSE DIVERSION
  - FLOOD COMPENSATION AREAS (FCA)



T:\MGTO337 - Ten-T Priority Route Imp - Donegal\8.0 Drawings\Phase 3\DRITT\_MGTO337-RPS-P3-S1-DR-C-DR0001\_Drainage\_Layout.dwg



**NOTES**  
 DO NOT SCALE, use figured dimensions only.  
 All levels are referred to Ordnance Survey Datum, Mean Head.  
 This drawing is the property of the Donegal County Council. It is a confidential document and must not be copied, used, or its contents divulged without prior written consent. This document should not be relied on or used in circumstances other than those for which it was originally prepared. RPS / Barry Transportation accepts no responsibility for this document to any other party other than the party by whom it was commissioned.

Rev.	Date	Drawn	Description	Chk'd	Appr.
P01	29.10.25	MC	ISSUE FOR PLANNING	BL	EC

Project Title: TEN-T Priority Route Improvement Project, Donegal Section 1 - N15/N13 Ballybofey / Stranorlar Urban Region		Status: A3
Drawing Title: DRAINAGE LAYOUT		Rev: P01
Designed: MK	Date: OCT 2025	NIS Drawing Identifier: NIS DRAWING 33
Drawn: MC	Scale @ A1: 1:2500	File Identifier: TT_MGTO337-RPS-P3-S1-DR-C-DR0001
Approved: EC	@ A3: 1:5000	
Checked: BL	Sheet: 08 of 08	