
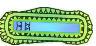








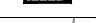


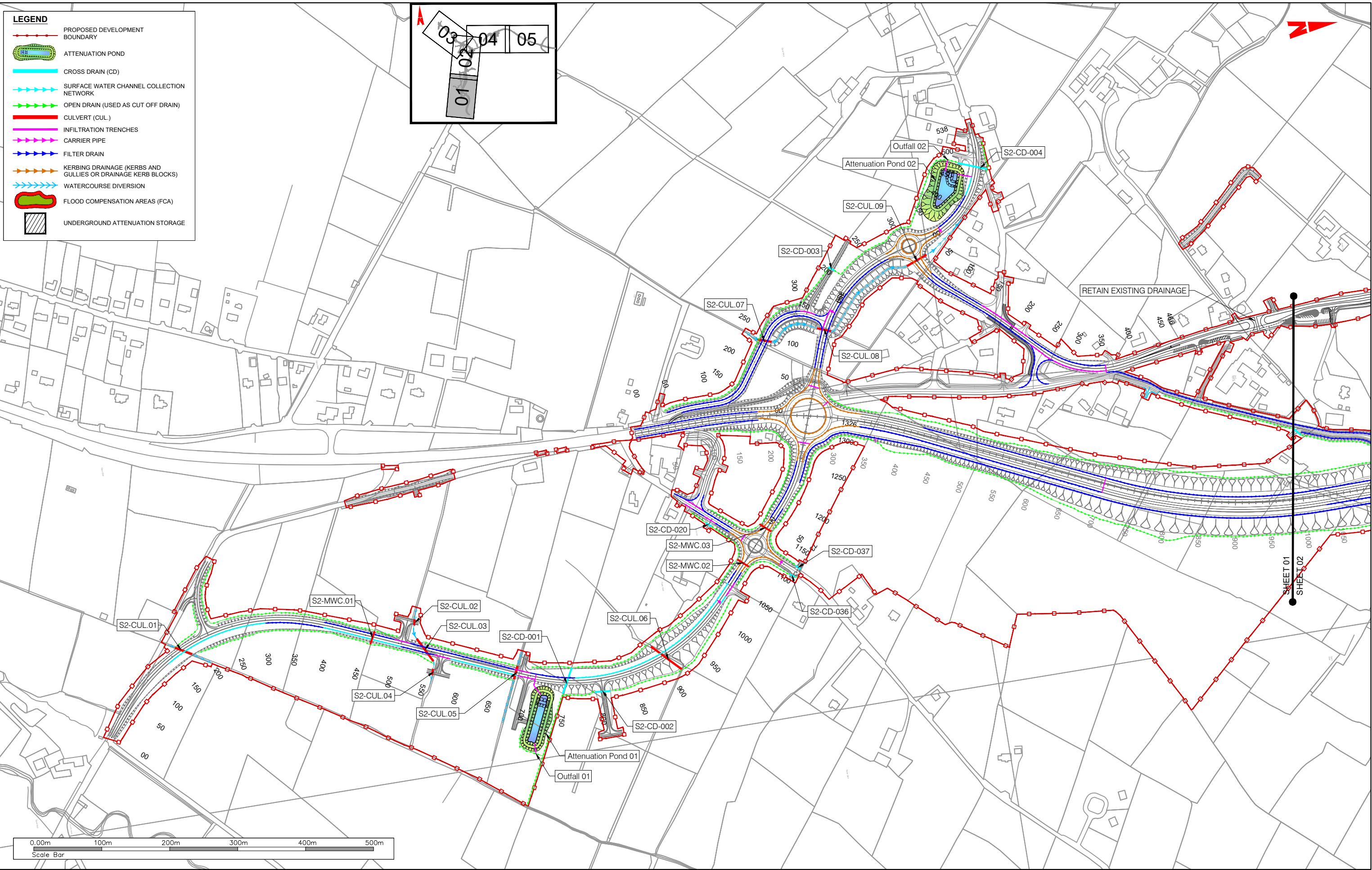
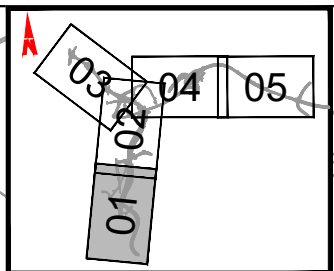


LEGEND

-  PROPOSED DEVELOPMENT BOUNDARY
-  ATTENUATION POND
-  CROSS DRAIN (CD)
-  SURFACE WATER CHANNEL COLLECTION NETWORK
-  OPEN DRAIN (USED AS CUT OFF DRAIN)
-  CULVERT (CUL.)
-  INFILTRATION TRENCHES
-  CARRIER PIPE
-  FILTER DRAIN
-  KERBING DRAINAGE (KERBS AND GULLIES OR DRAINAGE KERB BLOCKS)
-  WATERCOURSE DIVERSION
-  FLOOD COMPENSATION AREAS (FCA)
-  UNDERGROUND ATTENUATION STORAGE



T:\MGT0337 - Ten-T Priority Route Imp - Donegal\0 Drawings\Phase 3\DRIT - MGT0337-RPS-P3-S2-DR-C-DR0001 Section 2 Drainage Layout.DWG

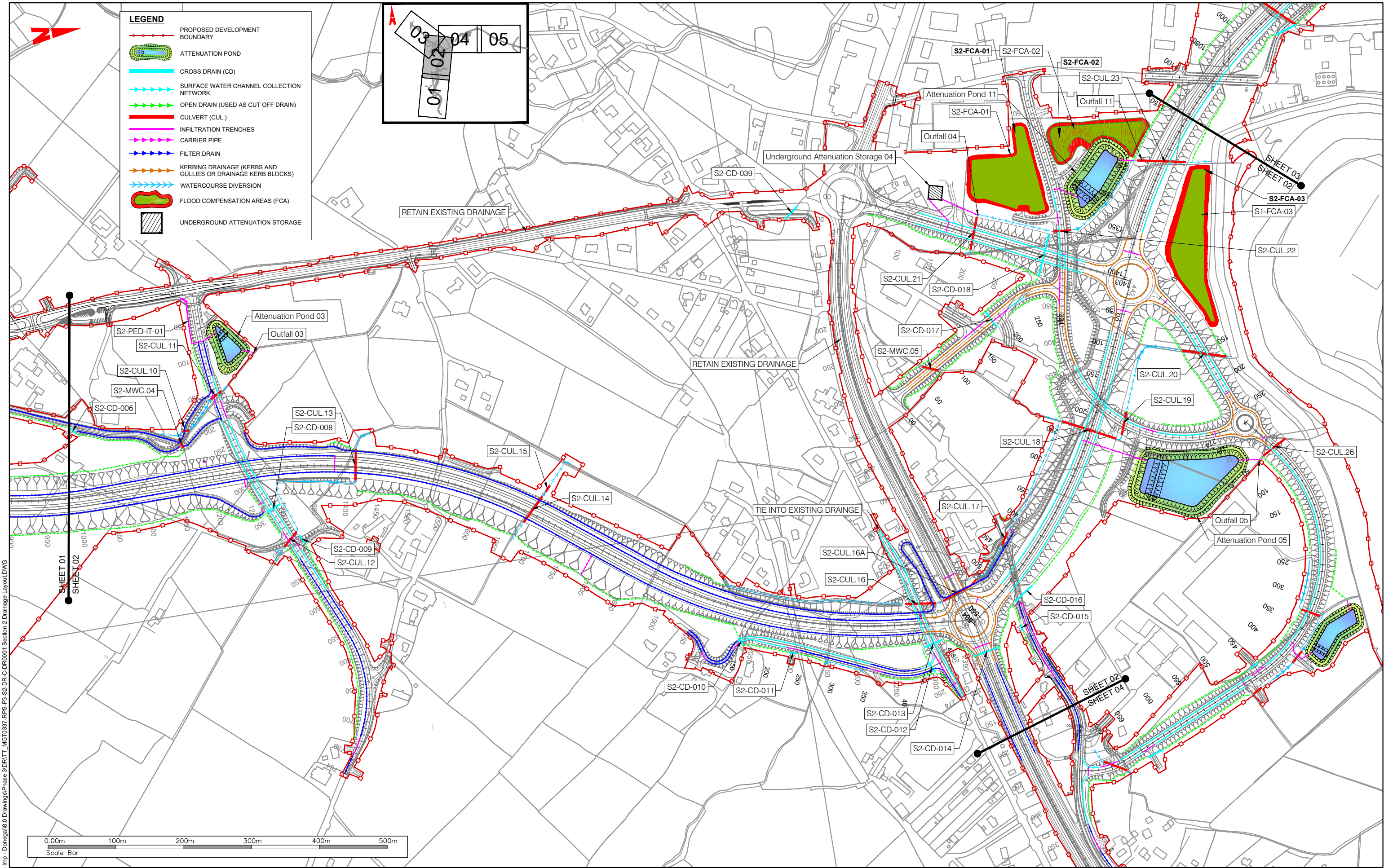
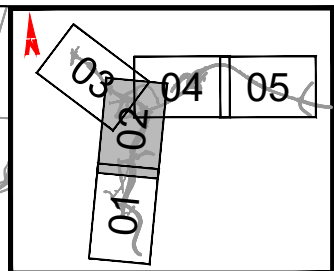
NOTES
 DO NOT SCALE, use figured dimensions only.
 All levels are referred to Ordnance Survey Datum, Mean Head.
 This drawing is the property of the Donegal County Council. It is a confidential document and must not be copied, used, or its contents divulged without prior written consent. This document should not be relied on or used in circumstances other than those for which it was originally prepared. RPS / Barry Transportation accepts no responsibility for this document to any other party other than the party by whom it was commissioned.

Rev.	Date	Drawn	Description	Chk'd	Appr.
P01	04.11.25	MC	ISSUE FOR PLANNING	BL	EC

Project Title: TEN-T Priority Route Improvement Project, Donegal Section 2 - N56/N13 Letterkenny to Manorcunningham		Status: A3
Drawing Title: DRAINAGE LAYOUT		Rev: P01
Designed: MK	Date: NOV 2025	Drawing Identifier: NIS DRAWING 34
Drawn: MC	Scale @ A1: 1:2500	File Identifier: TT_MGT0337-RPS-P3-S2-DR-C-DR0001
Approved: EC	@ A3: 1:5000	
Checked: BL	Sheet: 01 of 05	

LEGEND

- PROPOSED DEVELOPMENT BOUNDARY
- ATTENUATION POND
- CROSS DRAIN (CD)
- SURFACE WATER CHANNEL COLLECTION NETWORK
- OPEN DRAIN (USED AS CUT OFF DRAIN)
- CULVERT (CUL.)
- INFILTRATION TRENCHES
- CARRIER PIPE
- FILTER DRAIN
- KERBING DRAINAGE (KERBS AND GULLIES OR DRAINAGE KERB BLOCKS)
- WATERCOURSE DIVERSION
- FLOOD COMPENSATION AREAS (FCA)
- UNDERGROUND ATTENUATION STORAGE



T:\MGT0337 - Ten-T Priority Route Imp - Donegal\8.0 Drawings\Phase 3\DRIT - MGT0337-RPS-P3-S2-DR-C-DR0001 Section 2 Drainage Layout.DWG

NOTES
 DO NOT SCALE, use figured dimensions only.
 All levels are referred to Ordnance Survey Datum, Mean Head.
 This drawing is the property of the Donegal County Council. It is a confidential document and must not be copied, used, or its contents divulged without prior written consent. This document should not be relied on or used in circumstances other than those for which it was originally prepared. RPS / Barry Transportation accepts no responsibility for this document to any other party other than the party by whom it was commissioned.

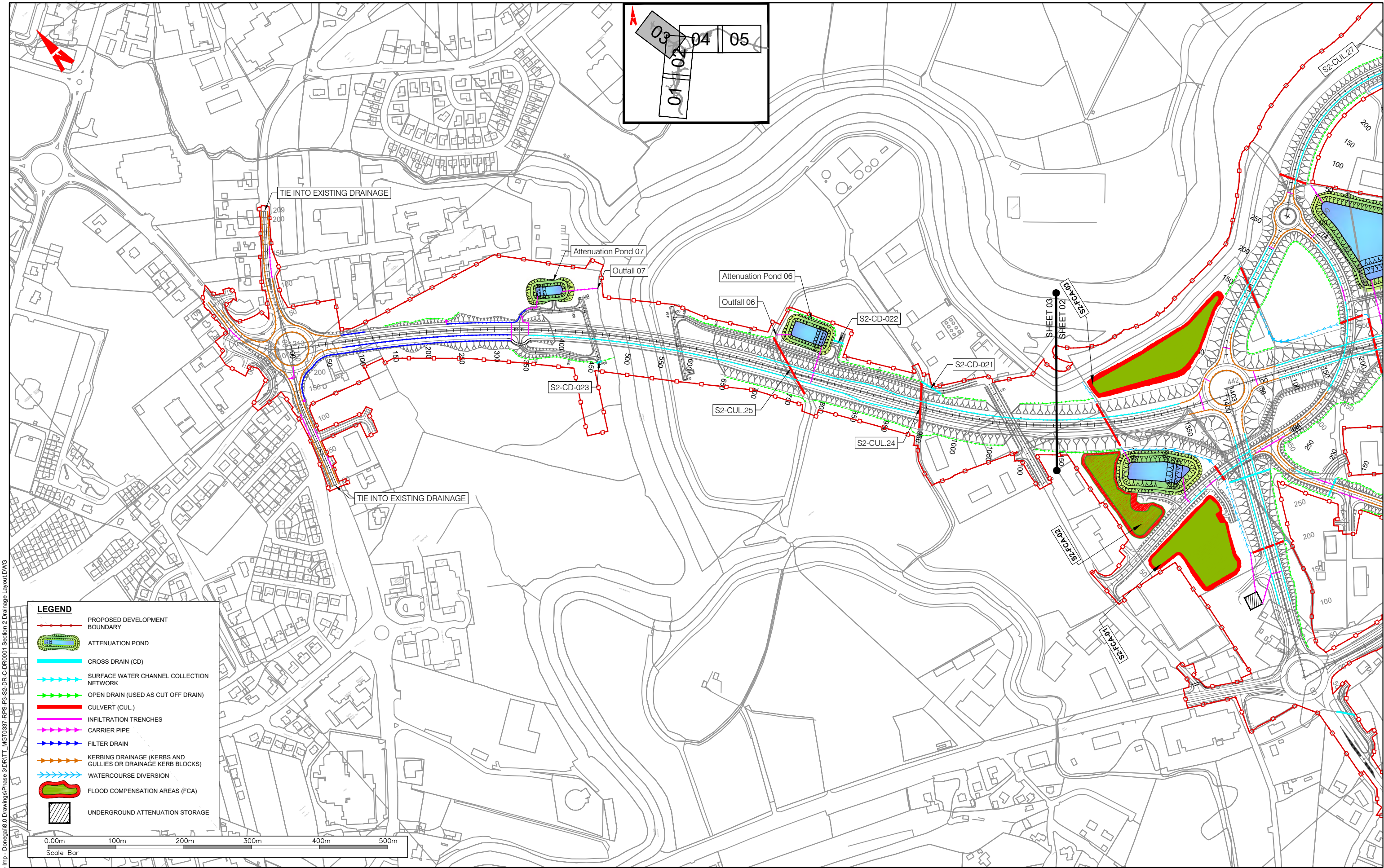
Rev.	Date	Drawn	Description	Chk'd	Appr.
P01	04.11.25	MC	ISSUE FOR PLANNING	BL	EC

Project Title: **TEN-T Priority Route Improvement Project, Donegal Section 2 - N56/N13 Letterkenny to Manorcunningham**

Drawing Title: **DRAINAGE LAYOUT**

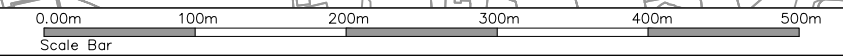
Status: **A3**

Designed: MK	Date: NOV 2025	Drawing Identifier: NIS DRAWING 34	Rev: P01
Drawn: MC	Scale @ A1: 1:2500	File Identifier: TT_MGT0337-RPS-P3-S2-DR-C-DR0001	
Approved: EC	@ A3: 1:5000		
Checked: BL	Sheet: 02 of 05		



LEGEND

- PROPOSED DEVELOPMENT BOUNDARY
- ATTENUATION POND
- CROSS DRAIN (CD)
- SURFACE WATER CHANNEL COLLECTION NETWORK
- OPEN DRAIN (USED AS CUT OFF DRAIN)
- CULVERT (CUL.)
- INFILTRATION TRENCHES
- CARRIER PIPE
- FILTER DRAIN
- KERBING DRAINAGE (KERBS AND GULLIES OR DRAINAGE KERB BLOCKS)
- WATERCOURSE DIVERSION
- FLOOD COMPENSATION AREAS (FCA)
- UNDERGROUND ATTENUATION STORAGE

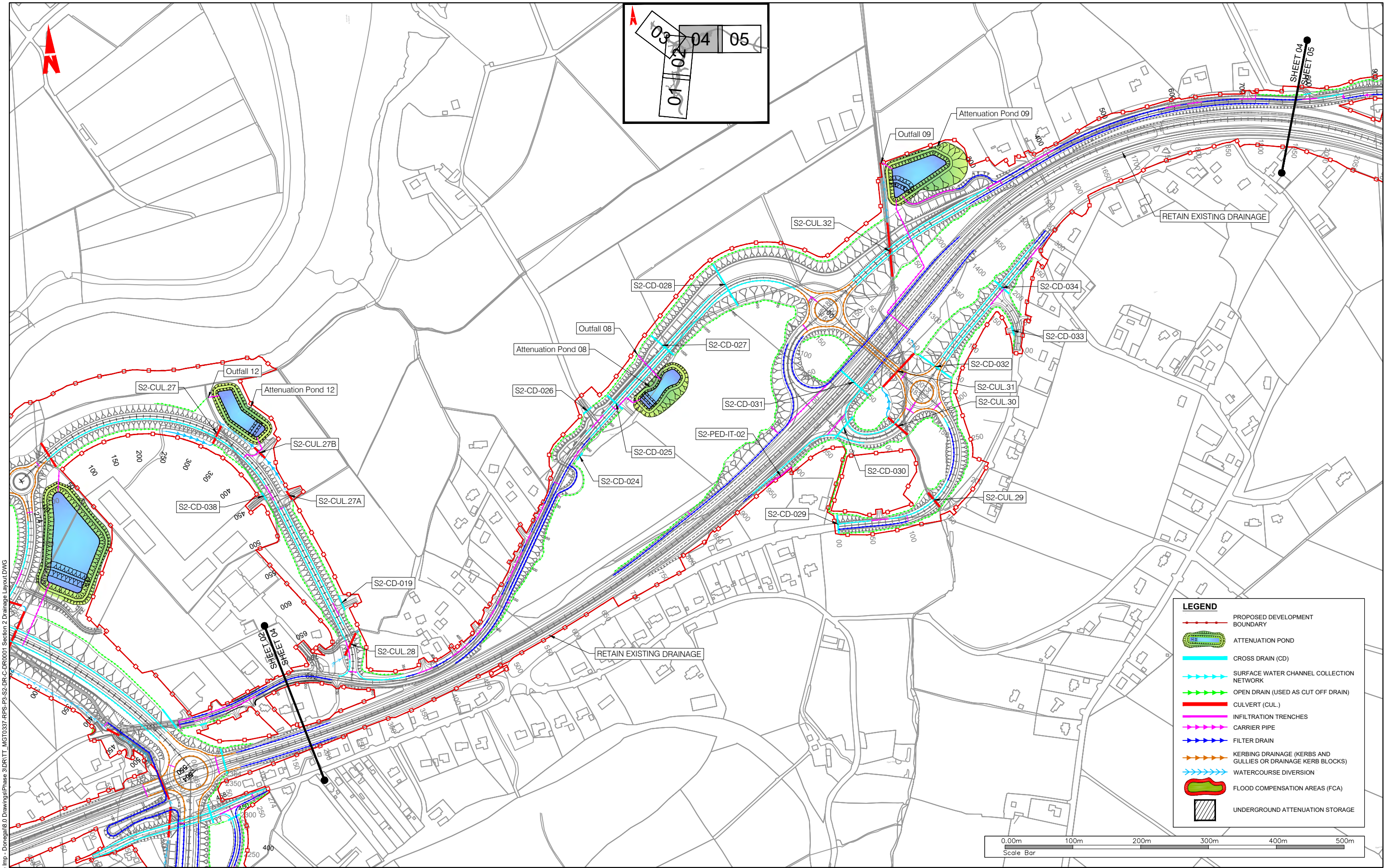


T:\MGT0337 - Ten-T Priority Route Imp - Donegal\8.0 Drawings\Phase 3\DRIT - MGT0337-RPS-P3-S2-DR-C-DR0001 Section 2 Drainage Layout.DWG

NOTES
 DO NOT SCALE, use figured dimensions only.
 All levels are referred to Ordnance Survey Datum, Mean Head.
 This drawing is the property of the Donegal County Council. It is a confidential document and must not be copied, used, or its contents divulged without prior written consent. This document should not be relied on or used in circumstances other than those for which it was originally prepared. RPS / Barry Transportation accepts no responsibility for this document to any other party other than the party by whom it was commissioned.

Rev.	Date	Drawn	Description	Chk'd	Appr.
P01	04.11.25	MC	ISSUE FOR PLANNING	BL	EC

Project Title: TEN-T Priority Route Improvement Project, Donegal Section 2 - N56/N13 Letterkenny to Manorcunningham		Status: A3
Drawing Title: DRAINAGE LAYOUT		Rev: P01
Designed: MK	Date: NOV 2025	Drawing Identifier: NIS DRAWING 34
Drawn: MC	Scale @ A1: 1:2500	File Identifier: TT_MGT0337-RPS-P3-S2-DR-C-DR0001
Approved: EC	@ A3: 1:5000	
Checked: BL	Sheet: 03 of 05	



LEGEND

- PROPOSED DEVELOPMENT BOUNDARY
- ATTENUATION POND
- CROSS DRAIN (CD)
- SURFACE WATER CHANNEL COLLECTION NETWORK
- OPEN DRAIN (USED AS CUT OFF DRAIN)
- CULVERT (CUL.)
- INFILTRATION TRENCHES
- CARRIER PIPE
- FILTER DRAIN
- KERBING DRAINAGE (KERBS AND GULLIES OR DRAINAGE KERB BLOCKS)
- WATERCOURSE DIVERSION
- FLOOD COMPENSATION AREAS (FCA)
- UNDERGROUND ATTENUATION STORAGE

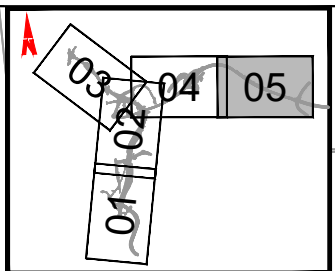
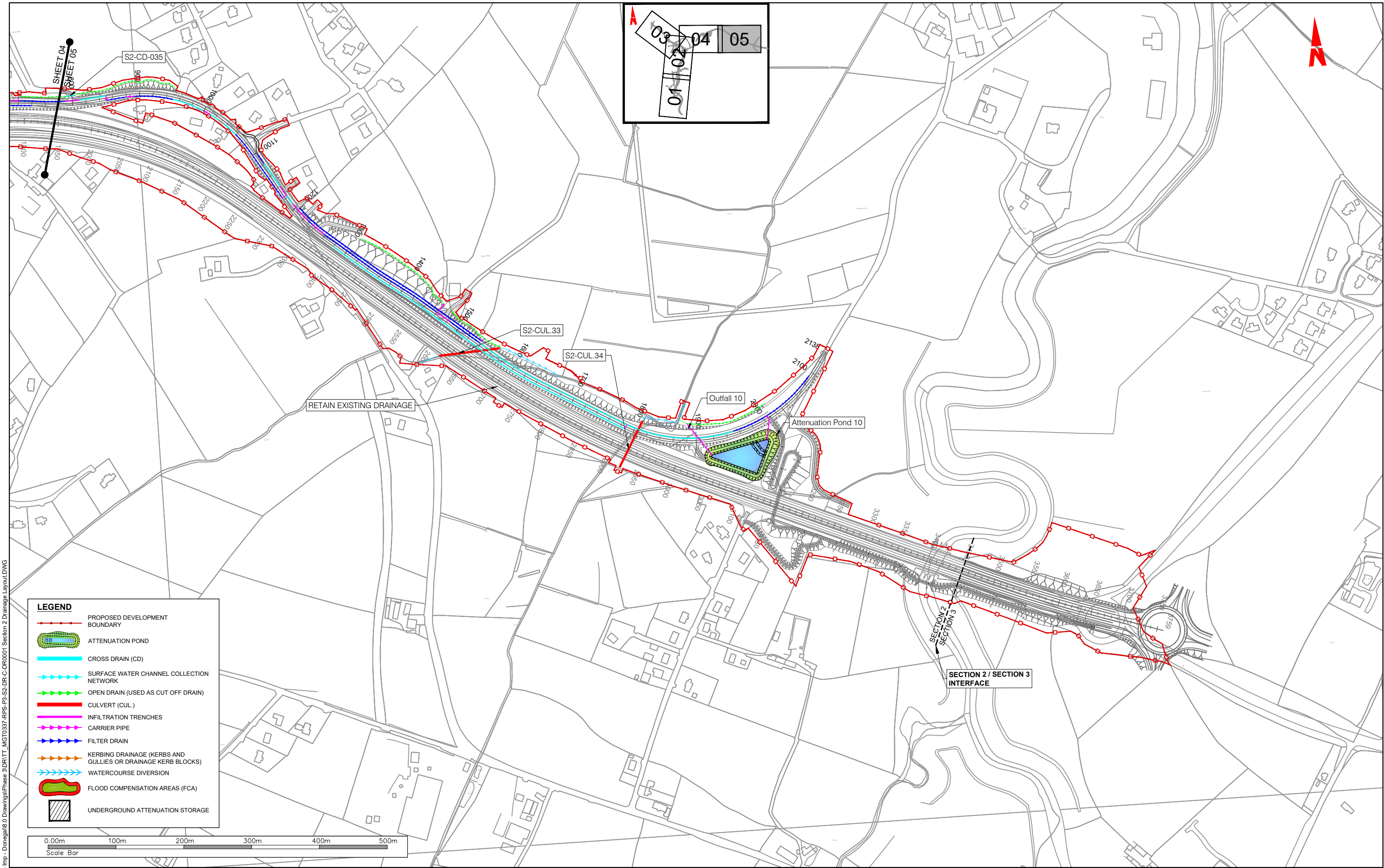


T:\MGT0337 - Ten-T Priority Route Imp - Donegal\8.0 Drawings\Phase 3\DRIT - MGT0337-RPS-P3-S2-DR-C-DR0001 Section 2 Drainage Layout.DWG

NOTES
 DO NOT SCALE, use figured dimensions only.
 All levels are referred to Ordnance Survey Datum, Mean Head.
 This drawing is the property of the Donegal County Council. It is a confidential document and must not be copied, used, or its contents divulged without prior written consent. This document should not be relied on or used in circumstances other than those for which it was originally prepared. RPS/BARRY Transportation accepts no responsibility for this document to any other party other than the party by whom it was commissioned.

Rev.	Date	Drawn	Description	Chk'd	Appr.
P01	04.11.25	MC	ISSUE FOR PLANNING	BL	EC

Project Title: TEN-T Priority Route Improvement Project, Donegal Section 2 - N56/N13 Letterkenny to Manorcunningham		Status: A3
Drawing Title: DRAINAGE LAYOUT		Rev: P01
Designed: MK	Date: NOV 2025	Drawing Identifier: NIS DRAWING 34
Drawn: MC	Scale @ A1: 1:2500	File Identifier: TT_MGT0337-RPS-P3-S2-DR-C-DR0001
Approved: EC	@ A3: 1:5000	
Checked: BL	Sheet: 04 of 05	



LEGEND

- PROPOSED DEVELOPMENT BOUNDARY
- ATTENUATION POND
- CROSS DRAIN (CD)
- SURFACE WATER CHANNEL COLLECTION NETWORK
- OPEN DRAIN (USED AS CUT OFF DRAIN)
- CULVERT (CUL.)
- INFILTRATION TRENCHES
- CARRIER PIPE
- FILTER DRAIN
- KERBING DRAINAGE (KERBS AND GULLIES OR DRAINAGE KERB BLOCKS)
- WATERCOURSE DIVERSION
- FLOOD COMPENSATION AREAS (FCA)
- UNDERGROUND ATTENUATION STORAGE



T:\MGT0337 - Ten-T Priority Route Imp - Donegal\8.0 Drawings\Phase 3\DRIT - MGT0337-RPS-P3-S2-DR-C-DR0001 - Section 2 Drainage Layout.DWG



NOTES
 DO NOT SCALE, use figured dimensions only.
 All levels are referred to Ordnance Survey Datum, Malin Head.
 This drawing is the property of the Donegal County Council. It is a confidential document and must not be copied, used, or its contents divulged without prior written consent. This document should not be relied on or used in circumstances other than those for which it was originally prepared. RPS / Barry Transportation accepts no responsibility for this document to any other party other than the party by whom it was commissioned.

Rev.	Date	Drawn	Description	Chk'd	Appr.
P01	04.11.25	MC	ISSUE FOR PLANNING	BL	EC

Project Title: TEN-T Priority Route Improvement Project, Donegal Section 2 - N56/N13 Letterkenny to Manorcunningham		Status: A3
Drawing Title: DRAINAGE LAYOUT		Rev: P01
Designed: MK	Date: NOV 2025	Drawing Identifier: NIS DRAWING 34
Drawn: MC	Scale @ A1: 1:2500	File Identifier: TT_MGT0337-RPS-P3-S2-DR-C-DR0001
Approved: EC	@ A3: 1:5000	
Checked: BL	Sheet: 05 of 05	