

**What's going on?**

Donegal County Council and their Design Consultants, RPS / Barry Transportation, invite you to view and comment on potential route corridors identified for the TEN-T Priority Route Improvement Project, Donegal, to be taken forward to Stage 2 of the Route Selection process.

Following this Consultation, RPS / Barry Transportation will review route corridors and undertake a multi-criteria analysis to identify a preferred route corridor. A further public consultation will be held to present the preferred route. Following this, a Design and Environmental Impact Statement will be produced.

**Progress to Date**

|                                  |                 |
|----------------------------------|-----------------|
| <b>Phase 1 – Feasibility</b>     | <b>Complete</b> |
| <b>Phase 2 – Route Selection</b> | <b>Ongoing</b>  |
| Constraints Public Consultation  | Complete        |
| Constraints Mapping/Reporting    | Complete        |
| Route Selection Process          | Ongoing         |

Identification of Preferred Route Corridor is currently planned for end of 2018

**Feedback**

You can provide feedback to the team by:

- Speaking to a Project Team Representative at the consultation event and filling in a feedback form
- Taking a feedback form away with you and returning it using the freepost envelope by Friday 11th May 2018
- Using the feedback section on our Project Website at [www.donegal-ten-t.ie/](http://www.donegal-ten-t.ie/)
- Emailing us at [donegalten-t@rpsgroup.com](mailto:donegalten-t@rpsgroup.com)

**Cad atá ar siúl?**

Tugann Comhairle Contae Dhún na nGall, agus a gcuid comhairleoirí dearthóireachta, RPS / Barry Transportation, cuireadh dhuit do chuid tuairimí a chur in iúl i leith na rogha bealaigh atá aitheanta don Tionscadal Feabhsúcháin Bhealach Tosaíochta TEN-T, Dhún na nGall, a bheas dhá thabhairt ar aghaidh go dtí Staid 2 den próiseas roghnúchán.

Tar éis an Comhairliúchán Poiblí, déanfaidh RPS / Barry Transportation anailís ilchritéir ar na rogha bealaigh chun an bealach is fearr a aithint. Beidh comhairliúchán poiblí eile eagraithe le haghaidh an bealach is fearr a chuir i láthair. Beidh dearadh an bealach is fearr agus ráiteas tionchar timpeallachta dhá tháirgeadh tar éis sin.

**Dul Chun Cinn**

|                                      |                          |
|--------------------------------------|--------------------------|
| <b>Céim 1 – Féidearthacht</b>        | <b>Críochnaithe</b>      |
| <b>Céim 2 - Roghnú Bealaigh</b>      | <b>Ag Dul ar Aghaidh</b> |
| Comhairliúchán Poiblí ar na Srianata | Críochnaithe             |
| Tuairiscíú/Mapáil na Srianata        | Críochnaithe             |
| Próiseas Roghnúchán na Bealaigh      | Ag Dul ar Aghaidh        |

Aithint an Bealach is Fearr beartaithe le haghaidh deireadh 2018

**Aiseolas**

Tá tú in ann aiseolas a thabhairt don foireann mar seo a leanas:

- Labhairt le Ionadaí Foireann an Tionscadail ag an cruinniú comhairliúchán poiblí agus foirm aiseolas a líonadh
- Foirm aiseolas a thabhairt leat agus é a sheoladh ar ais ag úsáid an clúdach litreach saorphost roimh an Aoine, 11ú Bealtaine 2018
- Ag úsáid an foirm aiseolais ar líne ar suíomh idirlín an Tionscadail ag [www.donegal-ten-t.ie/](http://www.donegal-ten-t.ie/)
- Seol ríomhphost chuig [donegalten-t@rpsgroup.com](mailto:donegalten-t@rpsgroup.com)

**What is the TEN-T Priority Route Improvement Project?**

The Trans-European Transport Network (TEN-T) is a selection of strategic transport corridors throughout the European Union (EU) that have been identified to play a key role in the mobility of goods and passengers through the EU. The TEN-T Network in Donegal, consists of three National Primary Roads (N13, N14 and part of the N15). Three sections of this TEN-T Network in Donegal have been prioritised for improvement (Figure 1) to address existing safety and operational issues, and together, they form the TEN-T Priority Route Improvement Project, Donegal. These three sections are:

- Section 1 – N15 Ballybofey / Stranorlar Urban Region
- Section 2 – N56/N13 Letterkenny to Manorcunningham
- Section 3 – N14 Manorcunningham to Lifford / Strabane / A5 Link.

**Céard é an Tionscadal Feabhsúcháin Bhealach Tosaíochta TEN-T?**

Is é atá sa Trans-European Transport Network (TEN-T) ná rogha de chonairí iompair straitéiseacha, atá aitheanta chun ról lárnach a bheith acu i dtaca le soghluaiseacht earraí agus paisinéirí ar fud an Aontais Eorpaigh. Tá trí Phríomhbhóthar Náisiúnta (N13, N14 agus páirt den N15) I gceist le líonra TEN-T i nDún na nGall. Tá tosaíocht tugtha do trí stráice de líonra TEN-T i nDún na nGall le haghaidh obair fheabhsúcháin (Léaráid 1), le dul i ngleic leis na fadhbanna sábháilteachta agus oibríochtúla atá ar na bóithre seo faoi láthair. Tá an obair ar an trí stráice seo i nDún na nGall mar chuid de Thionscadal Feabhsúcháin Bhealach Tosaíochta TEN-T, Dún na nGall. Is iad na trí stráicí ná:

- Stráice 1 - Ceantair Uirbigh Bealach Féich / Srath an Urláir
- Stráice 2 – Leitir Ceanainn go dtí Mainéar Uí Chuinneagáin
- Stráice 3 Mainéar Uí Chuinneagáin go dtí an Leifear / Srath Bán / Bóthar Ceangail A5.

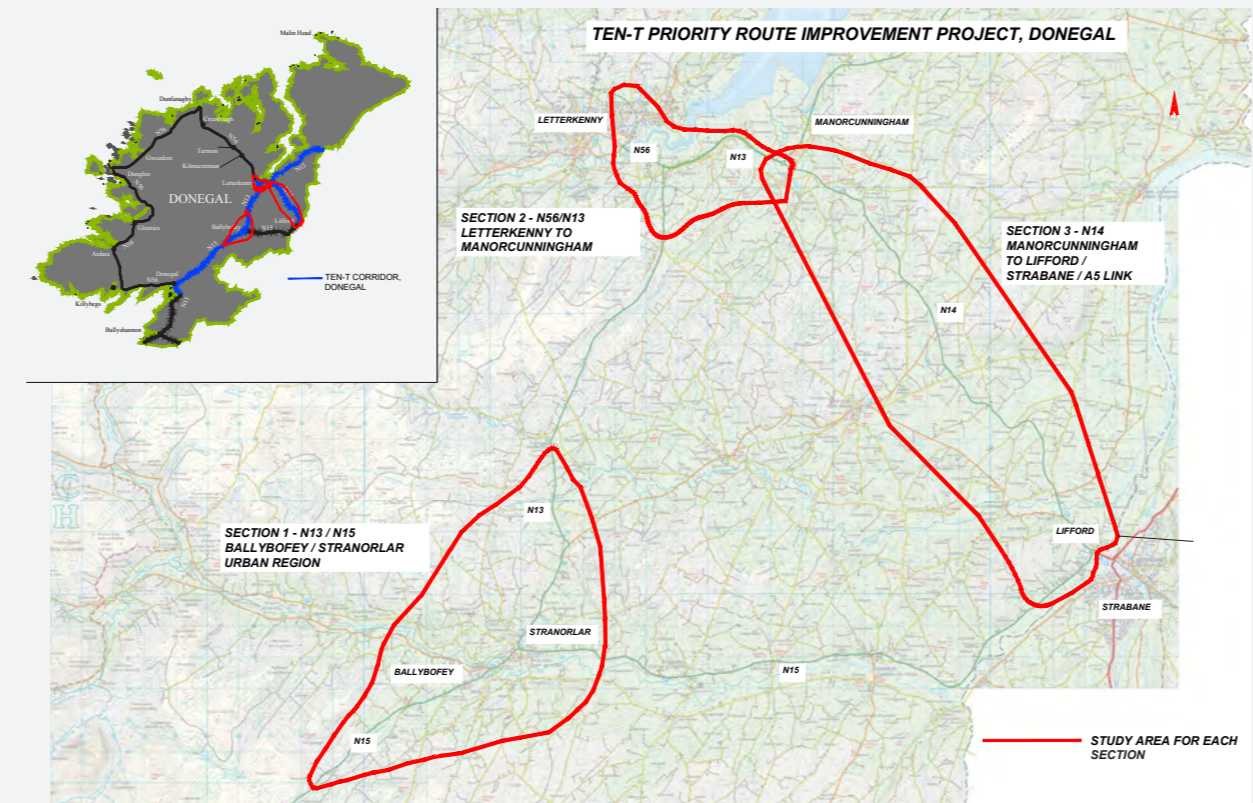


Figure 1 Study Areas for the TEN-T Priority Route Improvement Project, Donegal / Léaráid 1  
Limistéar Staidéir don Tionscadal Feabhsúcháin Bhealach Tosaíochta TEN-T, Dún na nGall



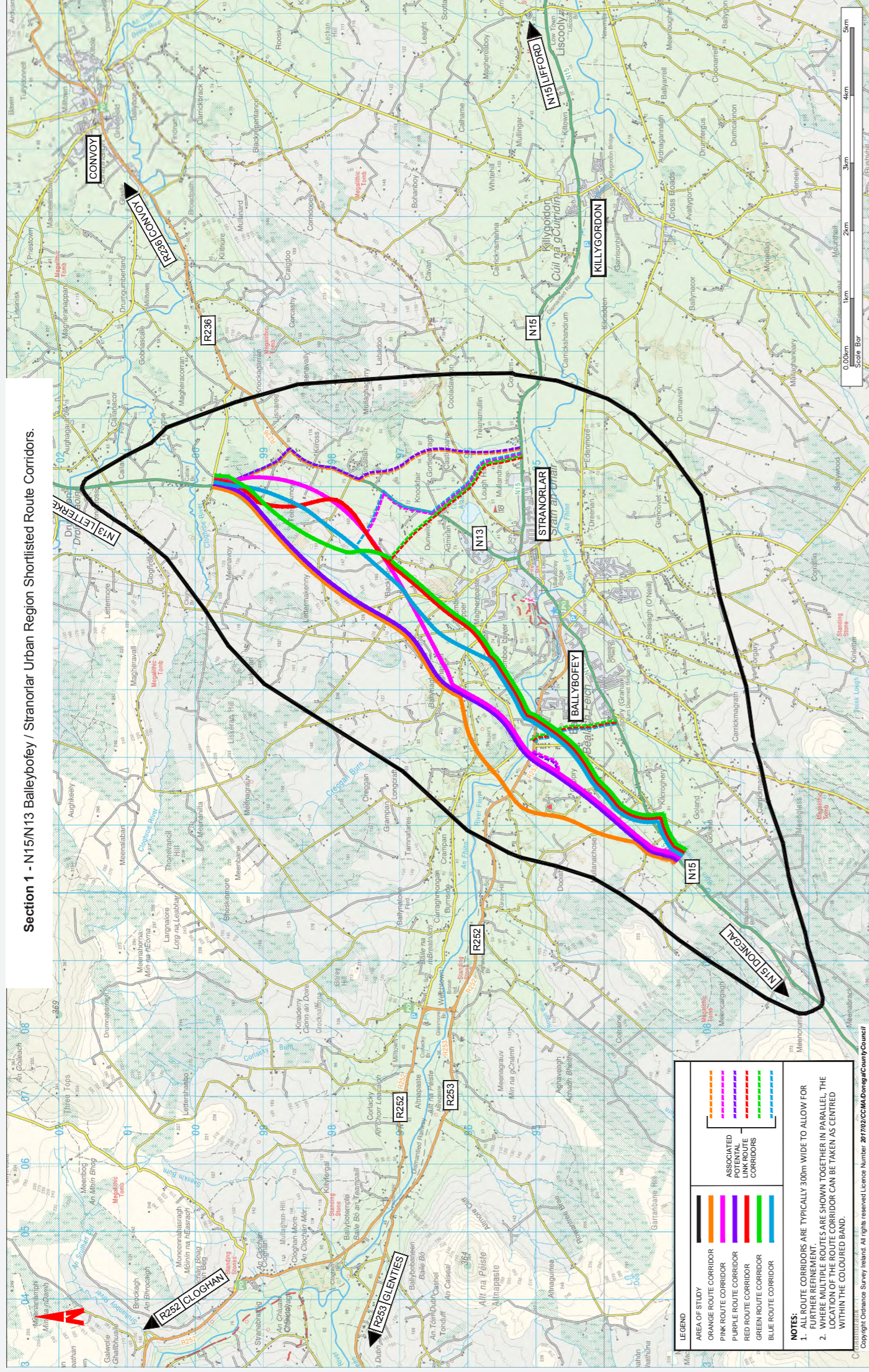
**TEN-T PRIORITY ROUTE IMPROVEMENT PROJECT, DONEGAL**  
**TIONSCADAL FEABHSÚCHÁIN BHEALACH TOSAÍOCHTA TEN-T, DHÚN NA NGALL**

**Public Consultation – Stage 1 Route Selection**  
**Comhairliúchán Poiblí - Staid 1 den Próiseas Roghnúchán**

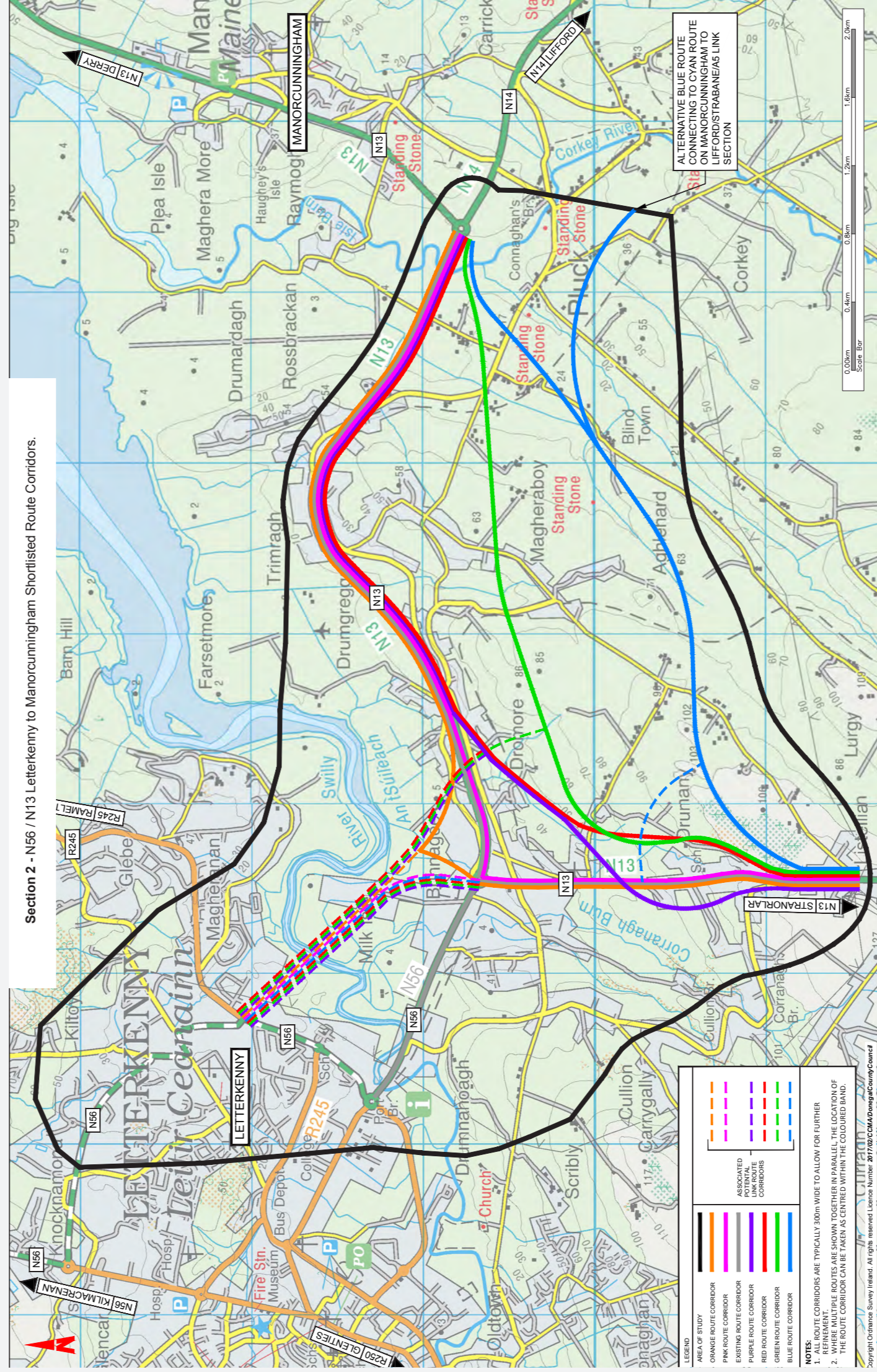
April 2018 / Aibreán 2018



Section 1 - N15/N13 Ballyboley / Stranorlar Urban Region Shortlisted Route Corridors.



Section 2 - N56 / N13 Letterkenny to Manorcunningham Shortlisted Route Corridors.



Section 3 - N14 Manorcunningham to Lifford / Strabane / A5 Link Shortlisted Route Corridors.

